

PRODUCT NUMBER  
76357-XXXLF

WHEN NEEDED, SUFFIX LETTER "LF"  
INDICATES THE PRODUCT IS RoHS  
COMPATIBLE, SEE NOTE 3

01: AWG 22-30  
11: AWG 20

PLATING CODE

3= 0.76µm GOLD ON CONTACT AREA.  
3.81µm TIN-LEAD ON TAIL.  
4= 5µm TIN-LEAD ON CONTACT AREA.  
3.81µm TIN-LEAD ON TAIL.

WHEN SUFFIX "LF" IS REQUIRED, 2µm MIN MATTE  
TIN OVER 1.27 MIN Ni IS SUPPLIED INSTEAD OF SnPb.

NOTES:

- 1 - TERMINAL MATERIAL: PHOSPHOR BRONZE.
- 2 - PRODUCT PACKED IN PLASTIC BOX (1000/BOX).
- 3 - RoHS COMPATIBLE PRODUCT SPECIFICATIONS

a - PLATING:

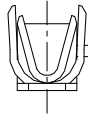
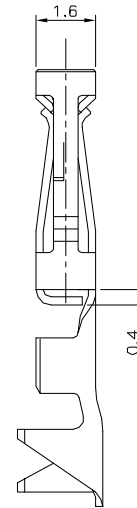
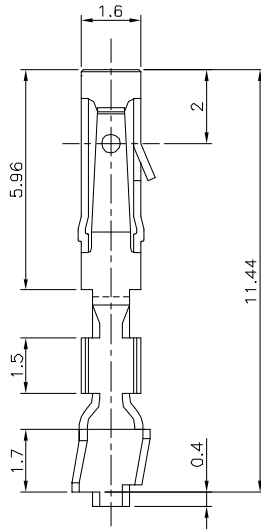
- "LF" MEANS THE PRODUCT IS LEAD-FREE,  
2µm MINIMUM MATTE TIN OVER 1.27µm  
MINIMUM NICKEL UNDERPLATE.

b - LABELING:

- MEETS PACKAGING SPECS AS PER GS-14-920

c - LEGAL STATEMENT: SEE GS-22-008

THE PRODUCT IS NOT INTENDED TO BE EXPOSED TO A



WIRE DIMENSION	
AWG	OUTSIDE INSULATION DIA.
20	1.30-1.65
22-30	0.90-1.50

mat'l. code		surface ISO 1302 <input checked="" type="checkbox"/> ISO 486 ISO 1181		tolerance tolerances unless otherwise specified		projection mm		product family DUBOX	
ltr	ecn no	dr	date	angles	linear	scale 10:1		title CtW CONTACT LOOSE PIECE	
D	10759	-	88.04.05					dwg no 76357	
E	F00155	DLE	00.03.16					sheet 1 of 1 size A3	
F	F10103	GCO	01.01.02					type CUSTOMER Drawing	
G	F04-0373	DLE	04.11.19	dr	D LEGRAND	00.03.16			
H	F05-0286	DLE	05.11.07	enrg	P NIZZI	00.03.16			
J	F06-0215	DLE	06.06.30	chr	JF NOTTEAU	00.03.16			
K	F06-0237	DLE	06.07.13	appd	PNZ	00.03.16			
sheet index	revision	sheet							