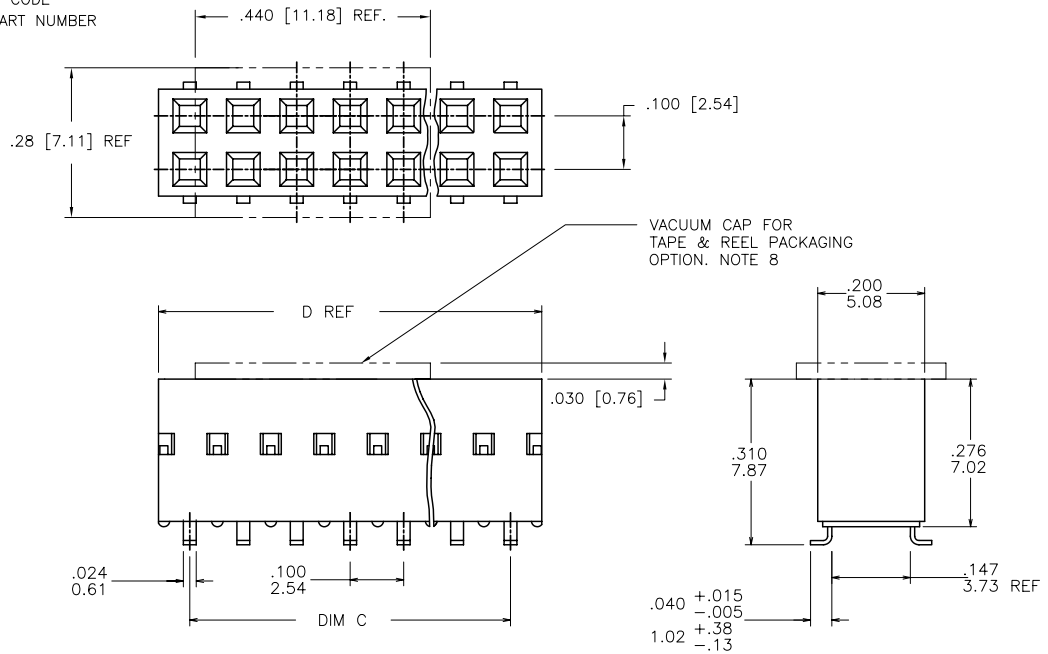


PRODUCT NUMBER  
SEE TABLE

68046 - XXX - LE  
 LEAD FREE OPTION  
 PACKAGING OPTION NOTE 6. OMIT IF NOT REQUIRED  
 NO OF POSITIONS PER ROW  
 PLATING CODE  
 BASE PART NUMBER



mat'l code		surface		tolerance		projection		product family	
ISO 1902		ISO 406		ISO 1101		ISO 1101		DUBOX	
itr		ecrn no		date		tolerances unless otherwise specified		title	
AM		V03-0309		HTB 04/26/03		XXX.01/XX.3		SMT DOUBLE ROW	
AN		V04-0986		DAI 10/13/04		XXXX.0005/XX4.13		VCC ASSEMBLY	
AP		V04-1003		DAI 10/25/04		0°±2°		scale 1:1	
AR		V05-0463		DPU 06/28/08		dr J. SHREINER 11/07/90		FCJ	
AS		M07-0143		ERE 03/03/07		engr M. HAHN 11/07/90		dwg no	
AT		M07-0203		AGS 5/02/07		chr M. HAHN 11/07/90		sheet 1 of 5 size	
AU		M08-0069		MHT 3/04/05		appd M. HAHN 11/07/90		68046 A3	
sheet		revision		AU		AU		type	
index		sheet		1		2		Product Customer Drawing	

PDM: Rev:AU STATUS:Released Printed: Dec 01, 2010

PRODUCT NUMBER NOTE 15	PLATING CONTACT AREA	PLATING SOLDER TAIL	MATERIAL REF
68046-2XX	15μ"/.38μ Au MIN OVER 50μ"/1.27μ Ni MIN SEE NOTE 18	100μ"/160μ" SN 2.54μ"/4.06μ"	NOTE 3&4
68046-3XX	30μ"/.76μ Au MIN OVER 50μ"/1.27μ Ni MIN SEE NOTE 18	100μ"/160μ" SN 2.54μ"/4.06μ"	NOTE 3&4
68046-4XX	100μ"/2.54μ SN MIN OVER 50μ"/1.27μ Ni MIN	100μ"/160μ" SN 2.54μ"/4.06μ"	NOTE 3,4&17
68046-6XX	30μ"/.76μ Au MIN OVER 50μ"/1.27μ Ni MIN SEE NOTE 18	100μ"/160μ" SN 2.54μ"/4.06μ"	NOTE 3&4
68046-8XX	30μ"/.76μ Au MIN OVER 50μ"/1.27μ Ni MIN	200μ"/5.08μ SL MIN	NOTE 3&4

—OBSOLETE

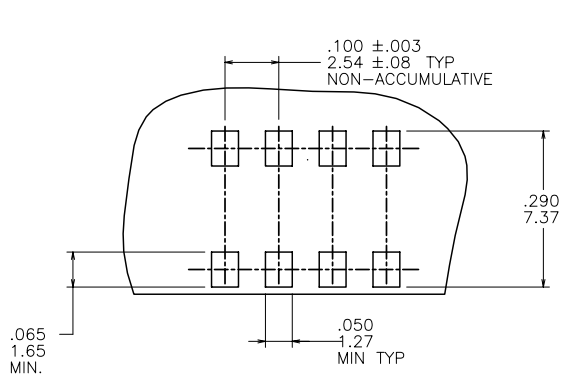


FIGURE A  
TOP ENTRY  
.025/.64 SQ PIN

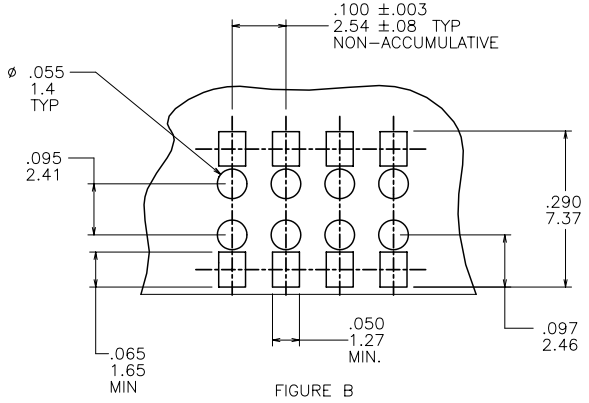
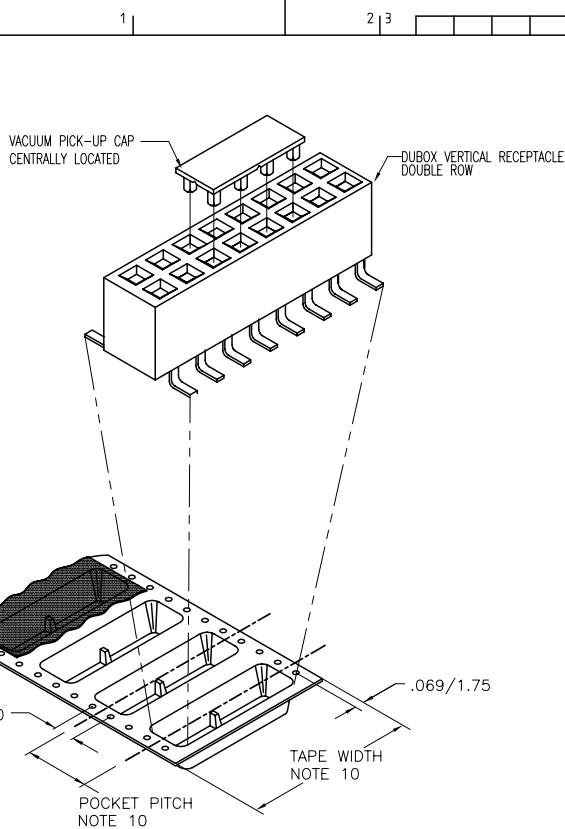


FIGURE B  
BOTTOM ENTRY (THROUGH PWB)  
.025/.64 SQ PIN

mat'l code	surface ISO 1802	tolerance ISO 406 ISO 1101	projection	product family DUBOX
itr	ecm no	dr	date	title SMT DOUBLE ROW VCC ASSEMBLY
AU				dwg no 68046
				sheet 2 of 5 size A3
				type Product Customer Drawing
sheet index	revision sheet			



TAPE AND REEL PACKAGING  
SEE NOTE 7

NOTES:

- ① TERMINAL MATERIAL: PHOSPHOR BRONZE.  
EXTRA HARD
2. RECOMMENDED APPLICATION DATA:  
A. RECOMMENDED SOLDER PAD PATTERN IS SHOWN IN FIGURE A & B.  
B. ALL MATING PINS TO BE .025/.64 SQUARE ON TRUE CENTER OF ON GIVEN TERMINAL SPACING WITHIN .015/.38 DIA.  
C. SUGGESTED MATING PIN LENGTH .210±.010 [5.33±.51]
- ③ HOUSING MATERIAL: P.P.S. FILLED.  
FLAME RETARDANT PER UL-94-V0.  
COMPATIBLE WITH INFRA-RED SOLDERING.  
COLOR: BLACK  
PART WILL WITHSTAND EXPOSURE TO 260° C PEAK TEMPERATURE FOR 20 SEONDS IN WAVE SOLDER,INFRA-RED OR VAPOR PHASE SOLDER PROCESS.
- ④ PRESTAMPED POST PLATED TERMINAL.
5. FCI, FCI FINAL PART NUMBER AND DATE CODE TO BE MARKED ON TUBE LABEL.
6. ADD SUFFIX 'P' TO DASH NUMBER AS FOURTH DIGIT FOR TAPE & REEL PACKAGING.
- ⑦ TAPE AND REEL PACKAGING PER GES-14-334.
- ⑧ VACUUM CAP MATERIAL: L.C.P., FLAME RETARDANT UL 94 V-0.  
COLOR : BLACK  
CAP IS USED WITH TAPE AND REEL PACKAGING.  
CAP IS TO BE CENTRALLY LOCATED ON PART.
9. TAPE AND REEL PACKAGING FOR 24mm WIDE AND BELOW HAVE PILOT HOLES ON ONE SIDE OF TAPE ONLY. SIZES ABOVE 24mm HAVE PILOT HOLES ON BOTH OF TAPE.
- ⑩ TAPE & REEL PACKAGING 24mm AND 32mm TAPE WIDTH, WITH 112mm POCKET PITCH.
11. MAXIMUM LENGTH OF CONNECTOR FOR TAPE AND REEL PACKAGING IS 2.50 LONG /63.5mm
- ⑫ PART NUMBER WITH SUFFIX "U" IS FOR SAWING PURPOSES ONLY.
13. STANDARD TUBE PACKAGE PER BUS-14-097/3.
- ⑭ TAPE & REEL PACKAGING 72mm TAPE WIDTH WITH 16mm POCKET PITCH.
- ⑮ ADD LF SUFFIX AT THE END OF PART NUMBER FOR LEAD FREE OPTION
16. THESE PRODUCTS MEETS EUROPEAN UNION DIRECTIVES AND OTHER COUNTRY REGULATION AS DESCRIBED IN GS-22-008.
- ⑰ "THIS PRODUCT HAS 100% TIN PLATING IN THE INTERFACE AND HAS NOT BEEN TESTED FOR WHISKER GROWTH IN ALL INTERCONNECT ENVIRONMENTS".
- ⑱ PLATING OPTIONS:  
MAY BE EITHER GOLD OR GXT PLATED AT MANUFACTURER'S OPTION.

mat'l code		surface	tolerance	projection	product family
ISO 1902		ISO 406	ISO 1101		DUBOX
itr	ecn no	dr	date	title	
tolerances unless otherwise specified				SMT DOUBLE ROW	
AU				VCC ASSEMBLY	
angles		linear	XXX.01/XX.3	INCH/MM	scale 1:1
0°±2°			XXX+0.005/XX+1.13		
dr		J. SHREINER	11/07/90	sheet 3 of 5 size	
enrg		M. HAHN	11/07/90	68046	
cty		M. HAHN	11/07/90	A3	
appd		M. HAHN	11/07/90	type Product Customer Drawing	
sheet index	revision sheet				

PDM: Rev:AU

STATUS:Released

Printed: Dec 01, 2010

PRODUCT NUMBER	NO. OF POS.	C DIM	D DIM	TAPE & REEL PACKAGING	LF OPTION
68046-Y02	2 X 2	.100/2.540	.217/5.511	NO	NOTE 15
-Y03	2 X 3	.200/5.080	.317/8.051	NO	
-Y04	2 X 4	.300/7.620	.417/10.591	NO	
-Y05	2 X 5	.400/10.160	.517/13.131	NO	
-Y06	2 X 6	.500/12.700	.617/15.671	NO	
-Y07	2 X 7	.600/15.240	.717/18.211	NO	
-Y08	2 X 8	.700/17.780	.817/20.751	NO	
-Y09	2 X 9	.800/20.320	.917/23.291	NO	
-Y10	2 X 10	.900/22.860	1.017/25.831	NO	
-Y11	2 X 11	1.000/25.400	1.117/28.371	NO	
-Y12	2 X 12	1.100/27.940	1.217/30.911	NO	
-Y13	2 X 13	1.200/30.480	1.317/33.451	NO	
-Y14	2 X 14	1.300/33.020	1.417/35.991	NO	
-Y15	2 X 15	1.400/35.560	1.517/38.531	NO	
-Y16	2 X 16	1.500/38.100	1.617/41.071	NO	
-Y17	2 X 17	1.600/40.640	1.717/43.611	NO	
-Y18	2 X 18	1.700/43.180	1.817/46.151	NO	
-Y19	2 X 19	1.800/45.720	1.917/48.691	NO	
-Y20	2 X 20	1.900/48.260	2.017/51.231	NO	
-Y21	2 X 21	2.000/50.800	2.117/53.771	NO	
-Y22	2 X 22	2.100/53.340	2.217/56.311	NO	
-Y23	2 X 23	2.200/55.880	2.317/58.851	NO	
-Y24	2 X 24	2.300/58.420	2.417/61.391	NO	
68046-Y25	2 X 25	2.400/60.960	2.517/63.931	NO	

mat'l. code	surface ISO 1802	tolerance ISO 406 ISO 1101	projection	product family DUBOX
itr	ecrn no	dr	date	title SMT DOUBLE ROW VCC ASSEMBLY
AU				dwg no 68046
	angles	linear	scale 1:1	sheet 4 of 5 size A3
	0°±2°	XXX1.0005/XXX1.13 XXXX1.0020/XXXX1.05		type Product Customer Drawing
	dr	J. SHREINER	11/07/90	
	engr	M. HAHN	11/07/90	
	chr	M. HAHN	11/07/90	
	appd	M. HAHN	11/07/90	
sheet index	revision sheet			

PDM: Rev:AU STATUS:Released Printed: Dec 01, 2010

PROD. NUMBER	NO. POSI.	C DIM	D DIM	TAPE & REEL PACKAGING	LF OPTION
68046-Y26	2 X 26	2.500/63.500	2.617/66.471	NO	
-Y27	2 X 27	2.600/66.040	2.717/69.011	NO	
-Y28	2 X 28	2.700/68.580	2.817/71.551	NO	
-Y29	2 X 29	2.800/71.120	2.917/74.091	NO	
-Y30	2 X 30	2.900/73.660	3.017/76.631	NO	
-Y31	2 X 31	3.000/76.200	3.117/79.171	NO	
-Y32	2 X 32	3.100/78.740	3.217/81.711	NO	
-Y33	2 X 33	3.200/81.280	3.317/84.251	NO	
-Y34	2 X 34	3.300/83.820	3.417/86.791	NO	
-Y35	2 X 35	3.400/86.360	3.517/89.331	NO	
-Y36	2 X 36	3.500/88.900	3.617/91.871	NO	
-Y37	2 X 37	3.600/91.440	3.717/94.411	NO	
-Y38	2 X 38	3.700/93.980	3.817/96.951	NO	
-Y39	2 X 39	3.800/96.520	3.917/99.491	NO	
-Y40	2 X 40	3.900/99.060	4.017/102.031	NO	
-Y41	2 X 41	4.000/101.600	4.117/104.571	NO	
-Y42	2 X 42	4.100/104.140	4.217/107.111	NO	
-Y43	2 X 43	4.200/106.680	4.317/109.651	NO	
-Y44	2 X 44	4.300/109.220	4.417/112.191	NO	
-Y45	2 X 45	4.400/111.760	4.517/114.731	NO	
-Y46	2 X 46	4.500/114.300	4.617/117.271	NO	
-Y47	2 X 47	4.600/116.840	4.717/119.811	NO	
-Y48	2 X 48	4.700/119.380	4.817/122.351	NO	
-Y49	2 X 49	4.800/121.920	4.917/124.891	NO	
-Y50	2 X 50	4.900/124.460	5.017/127.431	NO	
-Y50U	2 X 50	4.900/124.460	5.017/127.431	NO	
-Y03P	2 X 3	0.200/5.080	0.317/8.051	YES	
-Y04P	2 X 4	0.300/7.620	0.417/10.592	YES	
-Y05P	2 X 5	0.400/10.160	0.517/13.131	YES	
68046-Y06P	2 X 6	0.500/12.700	0.617/15.671	YES	
68046-Y07P	2 X 7	0.600/15.240	0.717/18.211	YES	
68046-Y12P	2 X 12	1.100/27.94	1.217/30.91	YES	
68046-Y13P	2 X 13	1.200/30.48	1.317/33.45	YES	
68046-Y20P	2 X 20	1.900/48.260	2.017/51.231	YES	

NOTE 15

NOTE 12  
 NOTE 6 & 9  
 NOTE 6 & 10  
 NOTE 6 & 10  
 NOTE 6 & 10  
 NOTE 6 & 10  
 NOTE 6 & 14  
 NOTE 6 & 14

mat'l code	surface ISO 1802	tolerance ISO 406 ISO 1101	projection	product family DUBOX
itr	ecrn no	dr	date	title SMT DOUBLE ROW VCC ASSEMBLY
AU				dwg no 68046
	angles	linear	XXX.01/XX.3	sheet 5 of 5 size A3
	0°±2°	linear	XXX.0005/XX.13 XXX.0020/XX.05	scale 1:1
	dr	J. SHREINER	11/07/90	FCJ
	engr	M. HAHN	11/07/90	
	chr	M. HAHN	11/07/90	
	appd	M. HAHN	11/07/90	
sheet index	revision sheet			type Product Customer Drawing