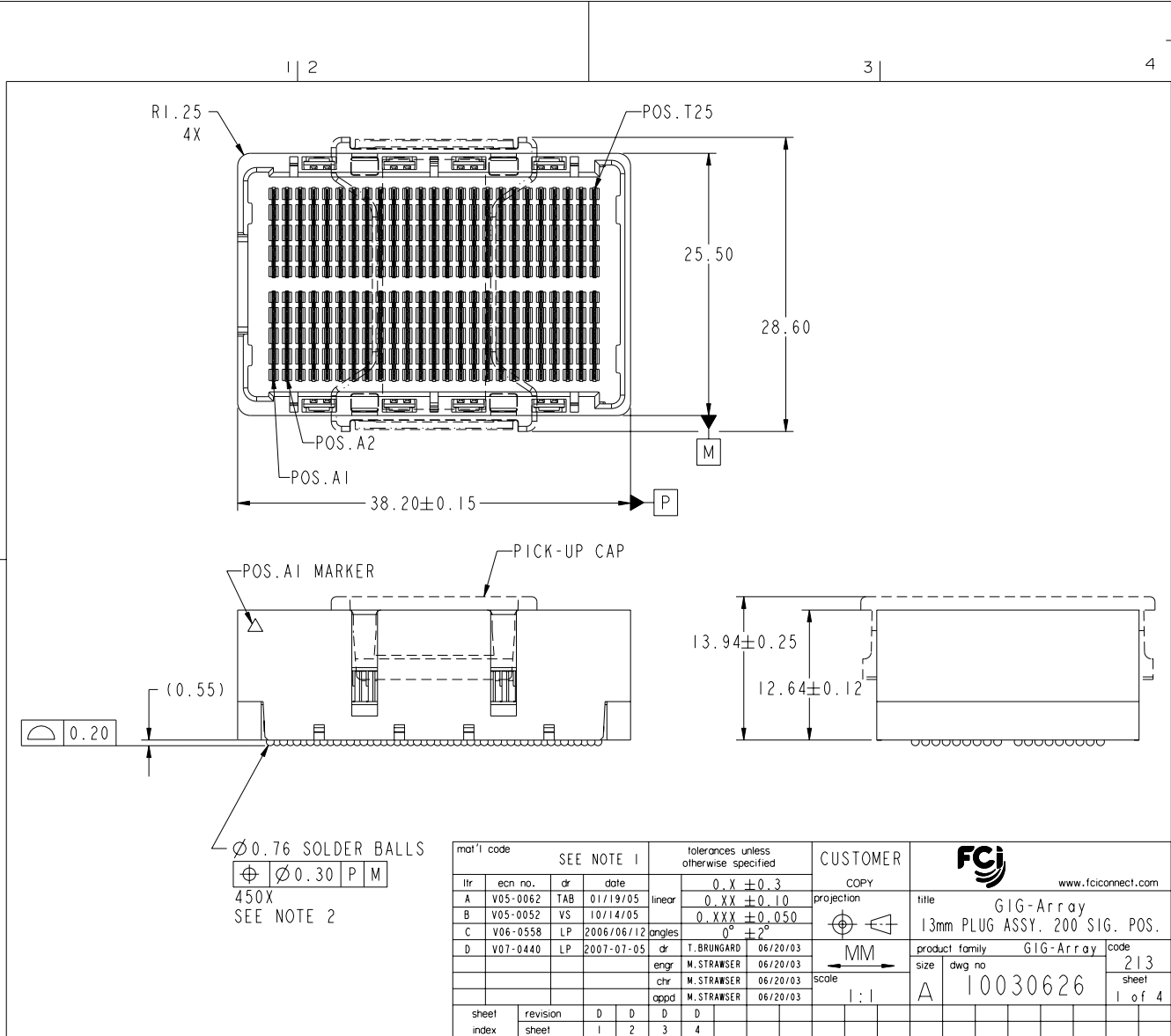




This document is the property of and embodies CONFIDENTIAL and PROPRIETARY information of FCI. No part of the information shown on this document may be used in any way or disclosed to others without the written consent of FCI. Copyright FCI.



mat'l code				SEE NOTE 1		tolerances unless otherwise specified		CUSTOMER		FCI	
ltr	ecm no.	dr	date	linear	0.X ± 0.3	projection	COPY		www.fciconnect.com		
A	V05-0062	TAB	01/19/05	0.XX ± 0.10	0°	MM	title		GIG-Array		
B	V05-0052	VS	10/14/05	0.XXX ± 0.050	0° ± 2°	MM	13mm PLUG ASSY. 200 SIG. POS.		product family		
C	V06-0558	LP	2006/06/12			MM	GIG-Array		code		
D	V07-0440	LP	2007-07-05	dr	T.BRUNGARD 06/20/03	MM	size		213		
				engr	M.STRAWER 06/20/03	MM	dwg no		10030626		
				chr	M.STRAWER 06/20/03	MM	scale		1 of 4		
				oppd	M.STRAWER 06/20/03	MM	1:1		sheet		
sheet index	revision sheet	D	D	D	D						
		1	2	3	4						

REV E - 2008-04-18

Pro/E

PDM: Rev:D

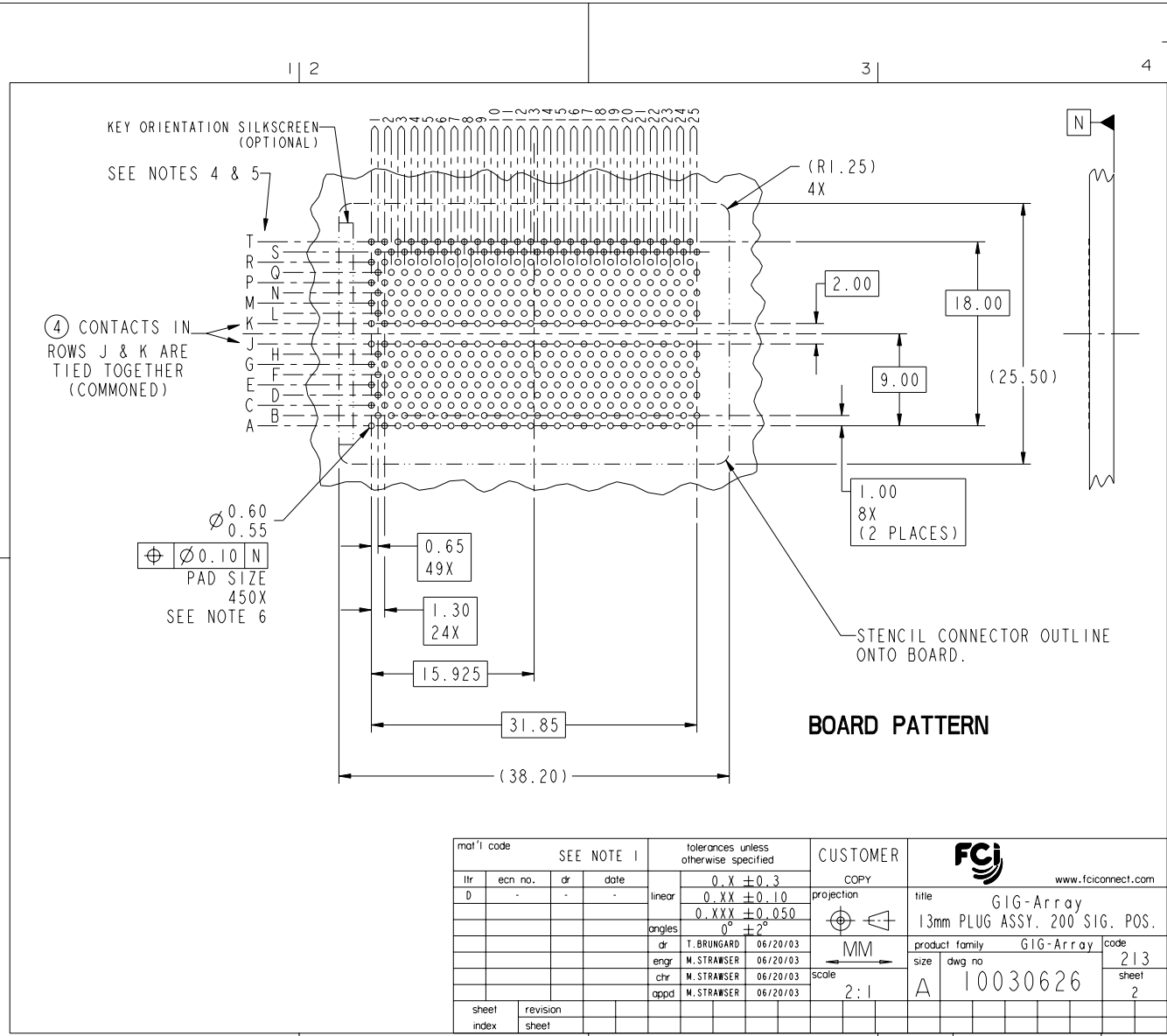
STATUS: Released

Printed: Oct 21, 2010

cage code 22526



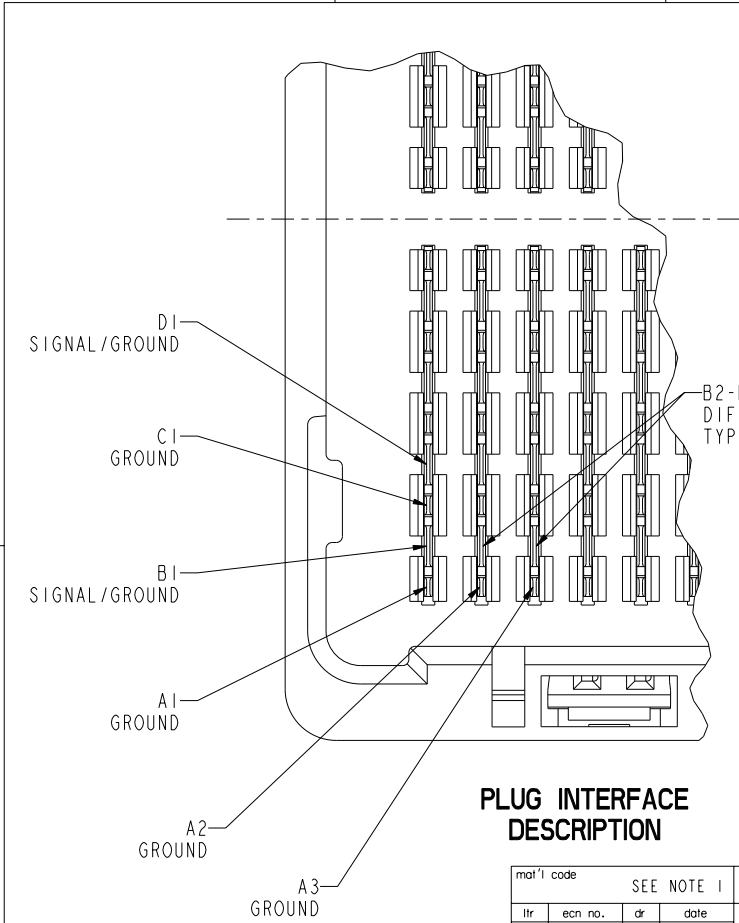
This document is the property of and embodies CONFIDENTIAL and PROPRIETARY information of FCI. No part of the information shown on this document may be used in any way or disclosed to others without the written consent of FCI. Copyright FCI.



mat'l code				SEE NOTE 1	tolerances unless otherwise specified	CUSTOMER	FCI www.fciconnect.com	
lfr	ecm no.	dr	date	linear	0.X ±0.3	COPY	title	GIG-Array
D	-	-	-	angles	0.XXX ±0.10	projection	13mm PLUG ASSY. 200 SIG. POS.	
					0° ±2°	MM	product family	GIG-Array
				dr	T.BRUNGARD 06/20/03	scale	size	code
				eng	M.STRAWNER 06/20/03	2:1	dwg no	213
				chr	M.STRAWNER 06/20/03		10030626	sheet
				appd	M.STRAWNER 06/20/03			2
sheet index	revision sheet						cage code	22526



This document is the property of and embodies
 CONFIDENTIAL and PROPRIETARY information of FCI.
 No part of the information shown on this
 document may be used in any way or disclosed
 to others without the written consent of FCI.
 Copyright FCI.



NOTES:

- ① MATERIAL:
 HOUSING: LCP
 CONTACT: COPPER ALLOY
 PLATING (CONTACT): Au OVER Ni.
 UL RATING: 94 V-0
 SOLDER BALL: (SEE TABLE) EUTECTIC
 SnPb OR LEADFREE 95.5 Sn/4Ag/0.5Cu
- ② SOLDER BALLS WILL NOT BE PERFECT
 SPHERICAL SHAPE DUE TO REFLOW ATTACHMENT.
- ③ MATED HEIGHT EFFECTED BY CUSTOMERS'
 PCB PAD SIZE, PLATING, SOLDER REFLOW
 PROFILE & SOLDER PASTE.
- ④ CONTACTS IN ROWS A,C,E,G,J,K,M,P,R AND T
 ARE SINGLE BEAM CONTACTS,
 TYPICALLY USED AS GROUND PINS.
 (NOTE: CONTACTS IN ROWS J & K ARE
 TIED TOGETHER [COMMONED])
- ⑤ CONTACTS IN ROWS B,D,F,H,L,N,Q AND S
 ARE DUAL BEAM CONTACTS,
 TYPICALLY USED AS SIGNAL PINS.

**PLUG INTERFACE
DESCRIPTION**

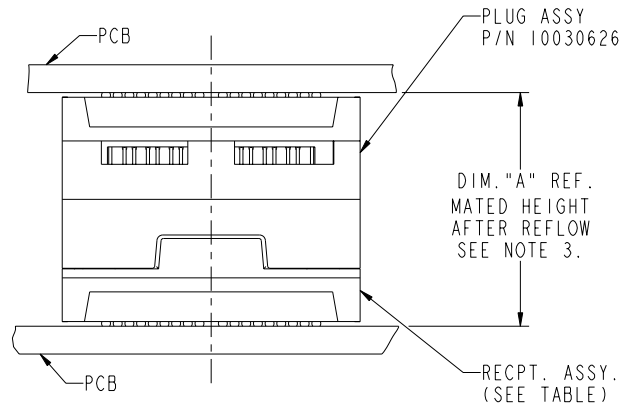
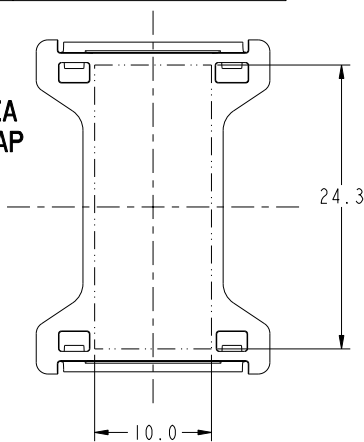
mat'l code		SEE NOTE 1		tolerances unless otherwise specified		CUSTOMER		FCI www.fciconnect.com	
ltr	ecn no.	dr	date	linear	0.X ±0.3	COPY		title	
D	-	-	-	linear	0.XX ±0.10	projection		GIG-Array	
				angles	0.XXX ±0.050			13mm PLUG ASSY. 200 SIG. POS.	
				dr	0° ±2°			product family	
				engr	T.BRUNGARD 06/20/03	MM		GIG-Array	
				engr	M.STRAWER 06/20/03	scale		code	
				chr	M.STRAWER 06/20/03	7:1		213	
				appd	M.STRAWER 06/20/03	A		sheet	
								3	
sheet index	revision sheet							cage code	
								22526	

REV E - 2006-04-18

Pro/E 3 PDM: Rev:D STATUS: Released Printed: Oct 21, 2010

PRODUCT NUMBER	SOLDER BALL
10030626-001	SnPb
10030626-001LF	SnAgCu LEADFREE (7)(8)

FLAT AREA PICK-UP CAP



END VIEW OF MATED CONNECTORS

DIM. "A"	RECPT. ASSY. P/N
18	55740
23	10026010
28	55741

NOT TOOLED

NOTES CONTINUED

(6) SPECIFIED POSITIONAL TOLERANCE DEFINES PAD TO PAD LOCATION WITHIN LAND PATTERN. POSITIONAL TOLERANCE OF LAND PATTERN TO FUDICIAL MARKS OR PCB DATUMS SHALL BE DEFINED BY CUSTOMER. FOR RECOMMENDED PRODUCT APPLICATION AND PCB DESIGN DETAILS, SEE DOC. NO. GS-20-016.

(7) FOR PROPER APPLICATION FOLLOW FCI APPLICATION SPECIFICATION GS-20-033 LEADFREE SOLDER BALLS WILL NOT SOLDER PROPERLY IN A LEADED SOLDER PROCESS DUE TO A HIGHER REFLOW TEMPERATURE, LEADFREE PRODUCT IS THEREFORE NOT BACKWARDS COMPATIBLE WITH LEADED OR SOME SOLDERING APPLICATIONS. REFERENCE FCI APPLICATION SPECIFICATION.

(8) THIS PRODUCT MEETS THE EUROPEAN UNION DIRECTIVES AND OTHER COUNTRY REGULATIONS AS DESCRIBED IN GS-22-008. PRODUCT MEETING WITH THIS DIRECTIVE IS IDENTIFIED IN THE LOT CODE NUMBER MARKED ON EACH PART BY HAVING AN "X" IN THE SEVENTH CHARACTER POSITION.

SEE NOTE 1				tolerances unless otherwise specified		CUSTOMER		FCI			
ltr	ecm no.	dr	date	linear	0.X ± 0.3	COPY	www.fciconnect.com				
D	-	-	-	0.XX ± 0.10	projection	title GIG-Array					
				0.XXX ± 0.050	angles	13mm PLUG ASSY. 200 SIG. POS.					
				0° ± 2°	dr	T.BRUNGARD	06/20/03	product family	GIG-Array	code	213
				eng	M.STRAWNER	06/20/03	size	dwg no	10030626	sheet	4
				chr	M.STRAWNER	06/20/03	scale				
				appd	M.STRAWNER	06/20/03	1:1				
sheet index	revision sheet							cage code	22526		



This document is the property of and embodies CONFIDENTIAL and PROPRIETARY information of FCI. No part of the information shown on this document may be used in any way or disclosed to others without the written consent of FCI. Copyright FCI.

REV E - 2006-04-18

PDM: Rev:D

STATUS: Released

Printed: Oct 21, 2010