



Cable Connectors

Audio

[back](#)[Print](#)

NL2FC

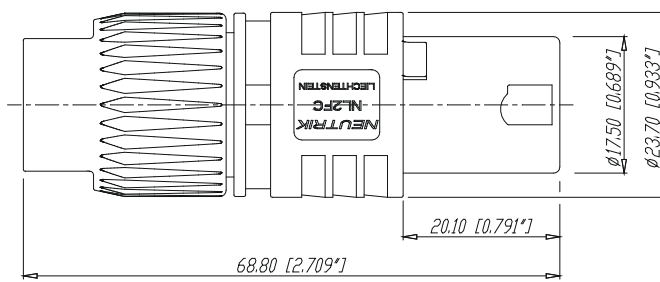
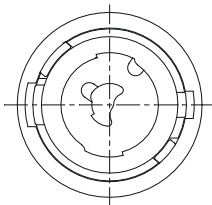


2 pole cable connector, quick lock, integrated chuck type strain relief for cables 6 - 10 mm diameter, intermates with 4-pole chassis connector and makes contact with +1/-1

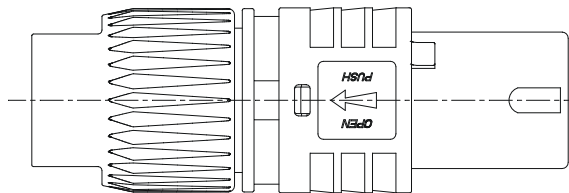
The industry-standard for loudspeaker connections offer extremely reliable and robust cable connectors with a reliable locking system. They feature solid contacts with screw-type terminals including a stranded wire protection which offer also solder termination.

Features & Benefits

- Current rating 30 A rms continuous
- Reliable and robust, easy and fast to assemble
- Contacts are touch proof and meet all safety requirements (IEC, UL, CSA)
- Accurate and dependable twist lock latching system "Quick Lock"
- High impact material for insert and housing, long-lasting and dependable
- Chuck type strain relief system for secure clamping of cable



Rear Side



				Werkstoff:	Maßstab:	Datum		Name		
				*Lieferant darf ohne Rücksprache nicht geändert werden	2:1	Gezeichnet		02.12.97		Lorely
						Zeichnung urheberrechtlich geschützt (DIN 34) (C)		Geprüft		
				Benennung:		Ersetzt durch:		Blatt		
				Speaker		Ersatz fuer:		von Blatt		
				NL 2 FC						
				NEUTRIK AG FL-9494 SCHAAN			Zeichn. Nr.			
Ind.	Änderung	Datum	Name	3102 St 05 34						



Cable Connectors

NL2FC

There are no technical infos for this product.

Product

Connector Type	Speakon
Gender	female

Electrical

Contact resistance	$\leq 3 \text{ m}\Omega$ (after lifetime)
Dielectric strength	4 kVdc (peak)
Insulation resistance	$> 1 \text{ G}\Omega$ (after dampheat)
Rated current per contact	30 A rms continuous
Rated current per contact	40 A audiosignal, duty cycle 50 %
Rated voltage	250 V (Insulation)

Mechanical

Cable O.D.	6 - 10 mm
Cable retention force	$\geq 220 \text{ N}$ (subject to cable O.D. and material)
Lifetime	> 5000 mating cycles
Wire size	4 mm ²
Wire size	12 AWG
Wiring	screw type terminals or soldering
Locking device	Quick Lock (ring)

Material

Bushing	Polyamide (PA 6 15% GR)
Contact plating	4 μm Ag
Contacts	Brass (CuZn39Pb3)
Insert	PBTP 20 % GR
Locking element	Zinc diecast (ZnAl4Cu1)
Shell	Polyamide (PA 6 30 % GR)
Strain relief	Polyacetal (POM)

Environmental

Approvals	UL, CSA
Flammability	UL 94 V-0
Solderability	Complies with IEC 68-2-20
Temperature range	-30 °C to +80 °C

Optical

Mobile Cables