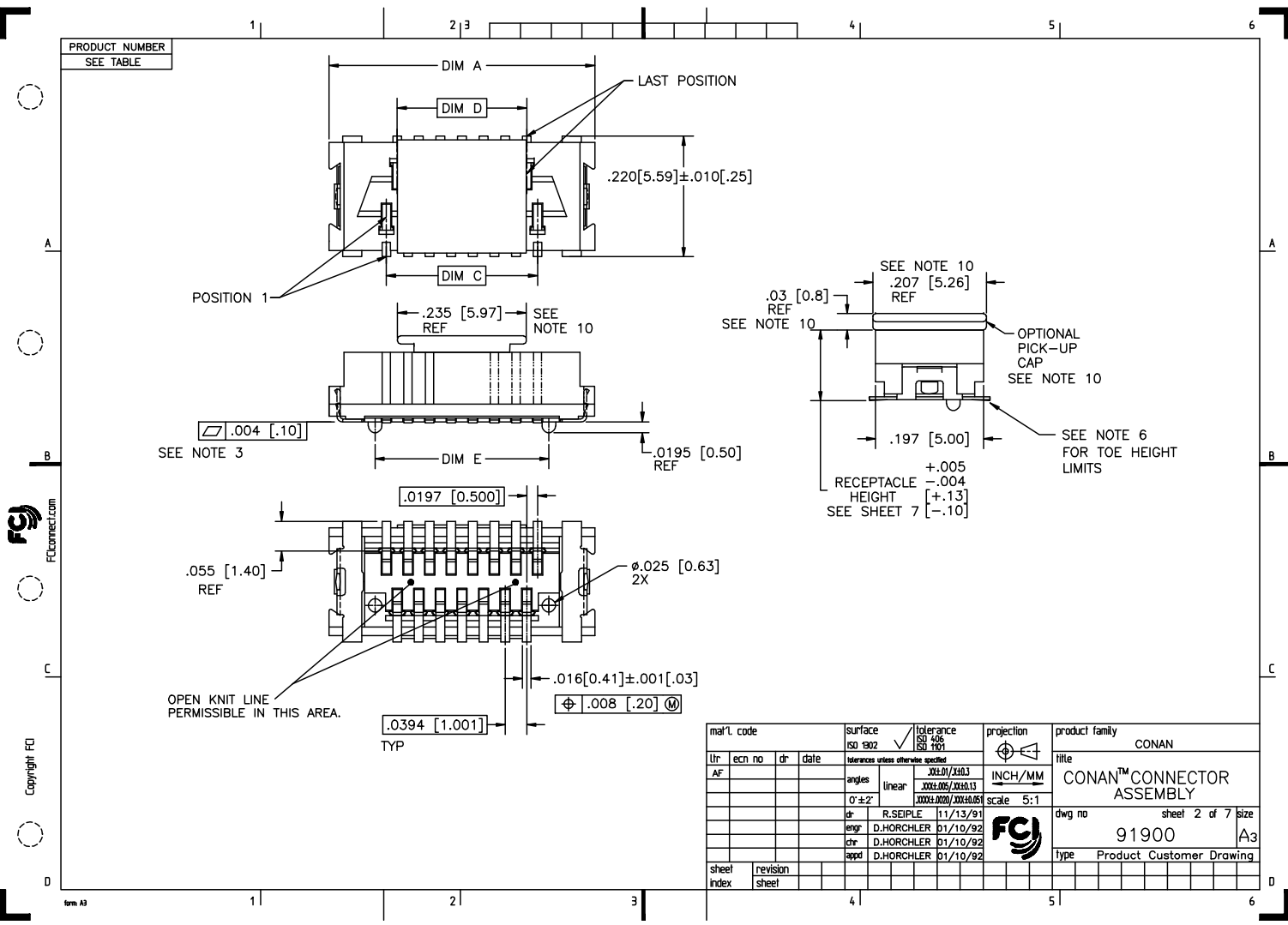


mail code				surface	tolerance	projection	product family
lit	ecn no	dr	date	ISO 1902	ISO 1902	ISO 1902	CONAN
Y	W03-1347	AA	12/20/01	tolerances unless otherwise specified			
AA	M04-0190	MHT	9/24/04	angles	linear	INCH/MM	CONAN™ CONNECTOR ASSEMBLY
AB	M05-0110	MHT	5/26/05	0'±2'	linear	scale 5:1	dwg no
AC	M06-0232	AGS	06/12/06	dr	R.S.EIPLE	11/13/91	sheet 1 of 7
AD	M06-0373	MHT	9/26/06	engr	D.HORCHLER	01/10/92	size
AE	M08-0012	AGS	1/11/08	chr	D.HORCHLER	01/10/92	A3
AF	M08-0287	MHT	10/02/08	appd	D.HORCHLER	01/10/92	type
sheet	revision	AF	AF	AF	AF	AF	Product Customer Drawing
index	sheet	1	2	3	4	5	

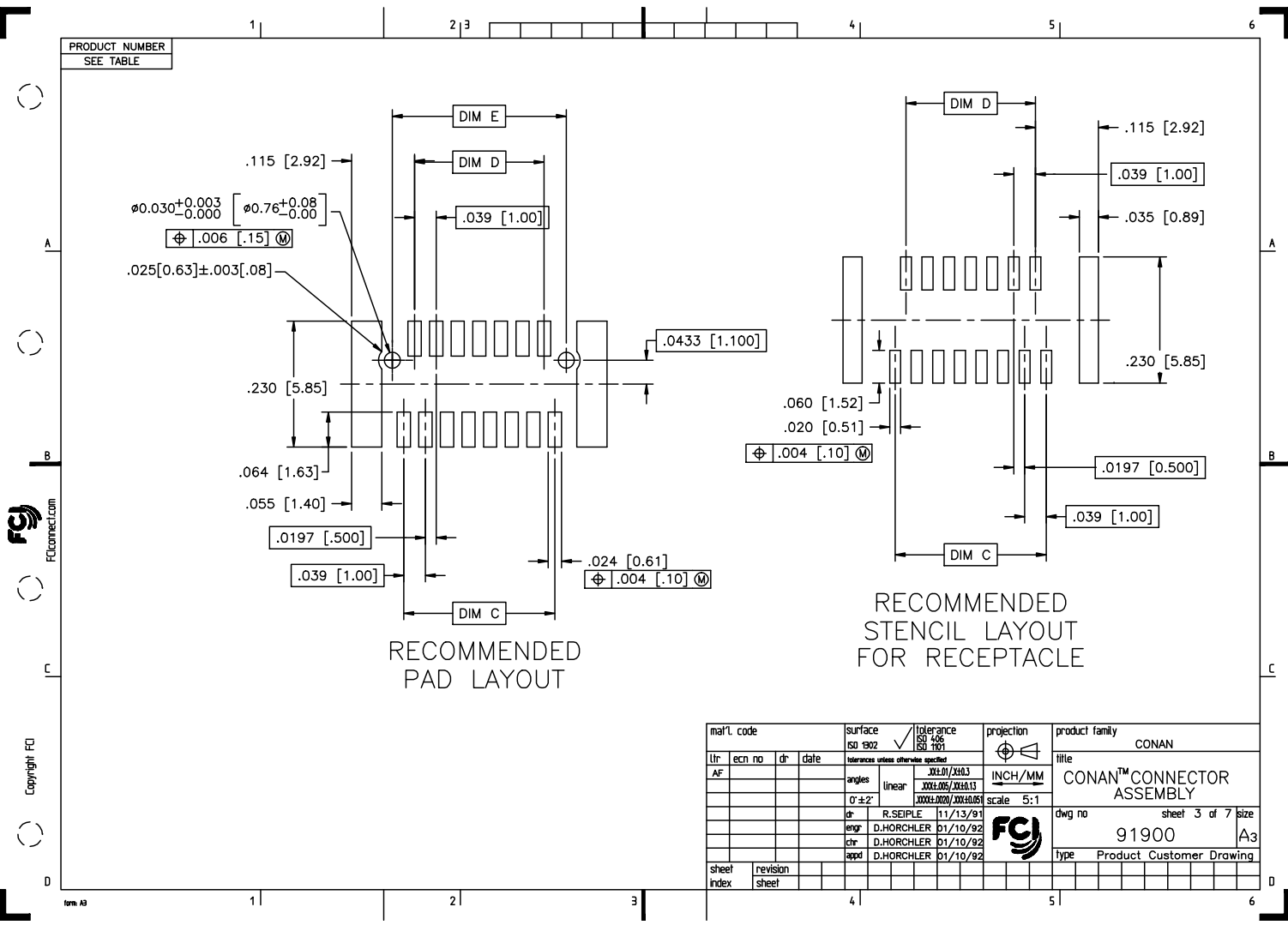
PDM: Rev:AF

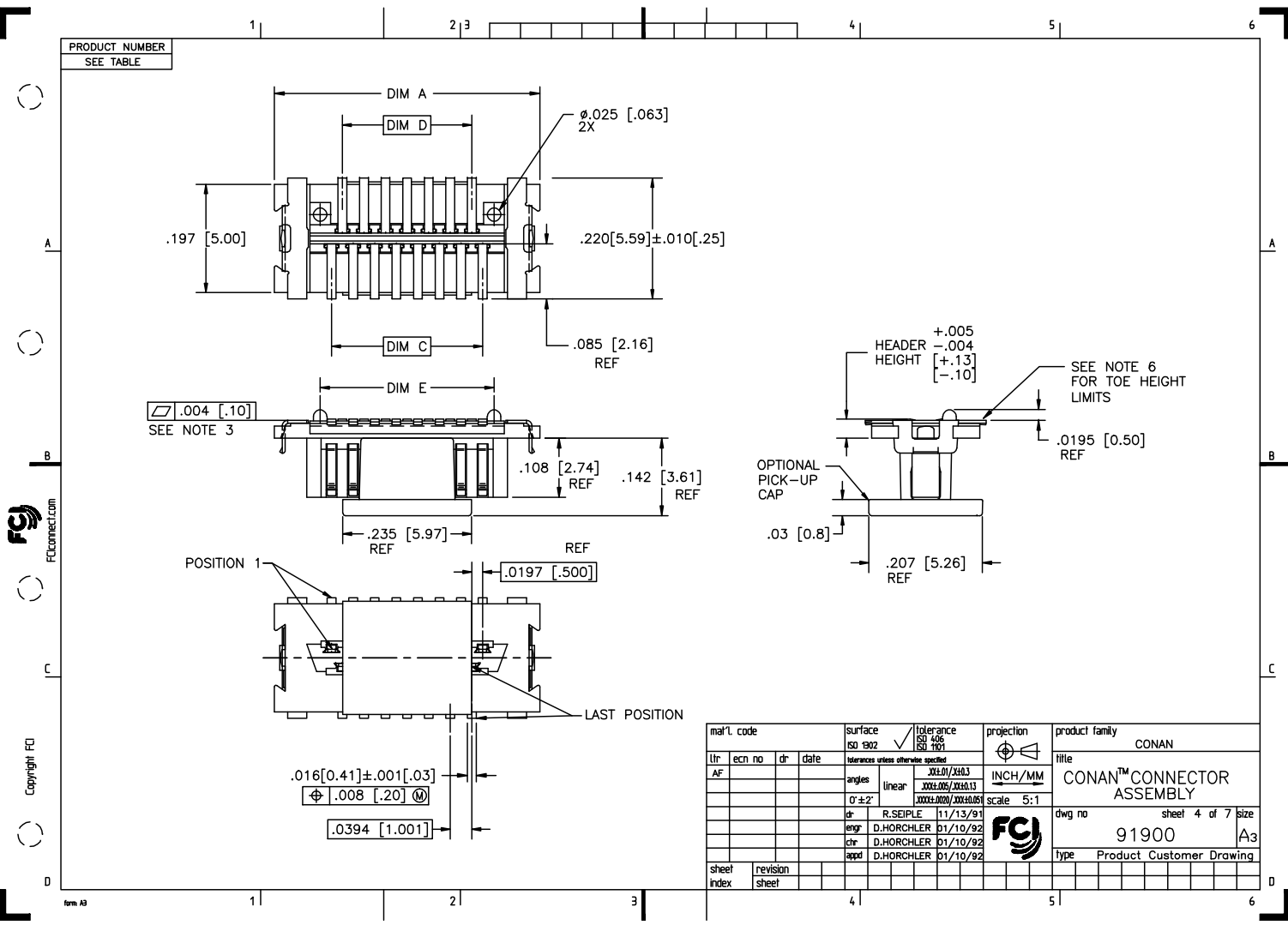
STATUS:Released

Printed: Oct 12, 2010

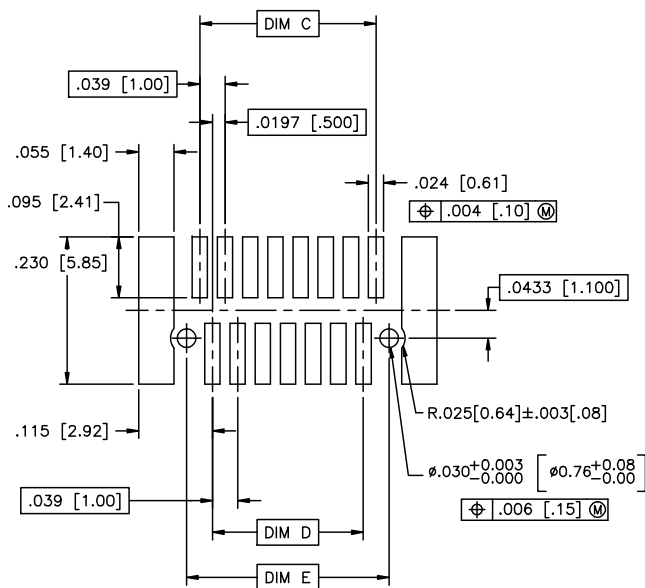


mat'l. code				surface	tolerance	projection	product family
lfr	ecn no	dr	date	ISO 1902	ISO 406	ISO 1001	CONAN
AF				tolerances unless otherwise specified			title
				angles	linear	XX±.01/XX±.03	CONAN™ CONNECTOR ASSEMBLY
				0°±2°		XX±.005/XX±.013	dwg no
				dr	R. SEIPLE	11/13/91	sheet 2 of 7
				engr	D. HORCHLER	01/10/92	size
				chr	D. HORCHLER	01/10/92	A3
				appd	D. HORCHLER	01/10/92	type
sheet	revision					Product Customer Drawing	
index	sheet						

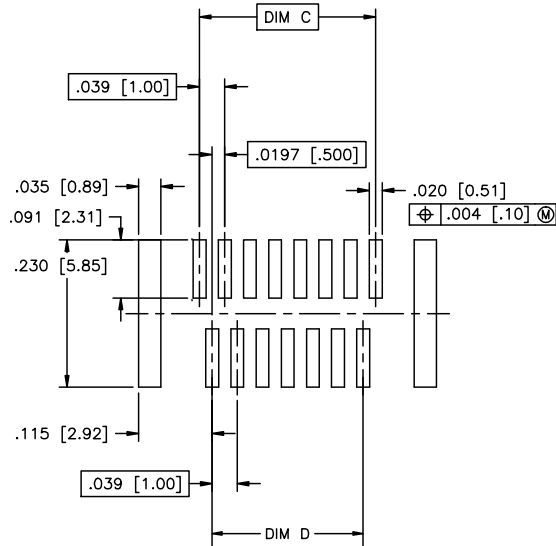




PRODUCT NUMBER
SEE TABLE



RECOMMENDED
PAD LAYOUT



RECOMMENDED
STENCIL LAYOUT
FOR HEADER

mat'l. code				surface ISO 1902	tolerance ISO 146 ISO 1001	projection ISO 1001	product family CONAN
lfr	ecm no	dr	date	tolerances unless otherwise specified			
AF				angles	linear	INCH/MM	title CONAN™ CONNECTOR ASSEMBLY
				0° ± 2°	linear	scale 5:1	dwg no 91900
				dr	R. SEIPLE	11/13/91	sheet 5 of 7 size A3
				engr	D. HORCHLER	01/10/92	type Product Customer Drawing
				chr	D. HORCHLER	01/10/92	
				appd	D. HORCHLER	01/10/92	
sheet index	revision sheet						

PDM: Rev:AF

STATUS Released

Printed: Oct 12, 2010

PRODUCT NUMBER	POS	DIM "A"	DIM "C"	DIM "D"	DIM "E"
919TC-WXY09					
↑ -WXY09LF	9	.366 [9.30]	.157 [4.00]	.118 [3.00]	.1990 [5.055]
↑ -WXY11					
↑ -WXY11LF	11	.406 [10.30]	.197 [5.00]	.157 [4.00]	.2380 [6.045]
↑ -WXY15					
↑ -WXY15LF	15	.484 [12.30]	.276 [7.00]	.236 [6.00]	.3170 [8.052]
↑ -WXY21					
↑ -WXY21LF	21	.602 [15.30]	.394 [10.00]	.354 [9.00]	.4350 [11.049]
↑ -WXY25					
↑ -WXY25LF	25	.681 [17.30]	.472 [12.00]	.433 [11.00]	.5140 [13.056]
↑ -WXY31					
↑ -WXY31LF	31	.800 [20.30]	.591 [15.00]	.551 [14.00]	.6320 [16.053]
↑ -WXY41					
↑ -WXY41LF	41	.996 [25.30]	.787 [20.00]	.748 [19.00]	.8290 [21.057]
↑ -WXY51					
↑ -WXY51LF	51	1.193 [30.30]	.984 [25.00]	.945 [24.00]	1.0260 [26.060]
↑ -WXY69					
↑ -WXY69LF	69	1.547 [39.30]	1.339 [34.00]	1.299 [33.00]	1.3800 [35.052]

NOTES:

1. MATERIALS:

RECEPTACLE HOUSING - LCP, UL-94V-0. COLOR: NATURAL.

RECEPTACLE TERMINALS - COPPER ALLOY,
PLATED WITH 150u"/.38u GXT™ IN CONTACT AREA
AND 100u"/2.54u Sn ON SOLDER LEGS WITH
AN OVERALL 50u"/1.27u Ni UNDERPLATE.

HEADER HOUSING - LCP, UL-94V-0. COLOR: NATURAL.

HEADER TERMINALS - COPPER ALLOY,
PLATED WITH 150u"/.38u GXT™ IN CONTACT AREA
AND 100u"/2.54u Sn ON SOLDER LEGS WITH
AN OVERALL 50u"/1.27u Ni UNDERPLATE.

RETENTION DEVICE - BRASS,
PLATED WITH 100u"/2.54u Sn OVER NICKEL.

2. REFERENCE GS-12-006 FOR PRODUCT PERFORMANCE DATA.

③ SEE TA-774 FOR FURTHER DESCRIPTION OF
HOW THIS DIMENSION IS APPLIED.

④ PICK AND PLACE CAP OR TAPE IS ONLY AVAILABLE WITH
OPTION 3 PACKAGING. (PSA ADHESIVE SEALED).
ALSO, PSA PACKAGING REQUIRES A PICK AND
PLACE CAP.

5. RECOMMENDED SOLDER PASTE THICKNESS IS
.006 TO .008 INCHES THICK.

⑥ THE TOE HEIGHT OF THE SOLDER TAIL SHALL BE
MEASURED FROM THE LOWEST POINT OF THE .004
CO-PLANARITY GRAVITY PLANE. THIS MEASUREMENT
IS NOT TO EXCEED A WINDOW OF .000 TO .007 INCHES.

⑦ THREE SLOTS MAY BE LOCATED AT EITHER END OF
HOUSING.

⑧ 5.50mm MATED HEIGHT IS ONLY AVAILABLE
IN 9, 15 AND 31 POS.

⑨ 7.50mm MATED HEIGHT IS ONLY AVAILABLE
IN 9 POS.

⑩ APPLIES TO 91921-3XYZZ AND
91931- 3XYZZ OPTIONS ONLY.

11. THE HOUSING WILL WITHSTAND EXPOSURE TO 260°C PEAK TEMPERATURE
FOR 30 SECONDS IN A CONVECTION INFRA RED OR VAPOR PHASE
REFLOW OVEN. SEE APPLICATION/PROCEDURES IF THEY ARE AVAILABLE

⑫ PRODUCT WITH "LF" AT THE END MEETS EUROPEAN UNION DIRECTIVES AND OTHER
COUNTRY REGULATION AS DESCRIBED IN GS-22-008.

mat'l. code		surface ISO 1902		tolerance ISO 408 ISO 1001		projection INCH/MM		product family CONAN	
lfr	ecn no	dr	date	tolerances unless otherwise specified		title CONAN™ CONNECTOR ASSEMBLY		dwg no	
AF				angles	linear	scale 5:1		sheet 6 of 7 size A3	
				0°±2'	linear			91900	
				dr	R.SEIPLE	11/13/91		type Product Customer Drawing	
				engr	D.HORCHLER	01/10/92			
				chr	D.HORCHLER	01/10/92			
				appd	D.HORCHLER	01/10/92			
sheet	revision								
index	sheet								

PDM: Rev:AF

STATUS Released

Printed: Oct 12, 2010

PRODUCT NUMBER
SEE TABLE

CONAN ASSEMBLY PART NUMBER

919 T C - W X Y ZZ LF

LEAD FREE OPTION
SEE NOTE 12

TYPE	T
HEADER WITH NO PEGS	0
HEADER WITH PEGS	1
RECEPTACLE WITH NO PEGS	2
RECEPTACLE WITH PEGS	3

PICK AND PLACE CAP OR TAPE (NOTE 4)	C
WITHOUT CAP OR TAPE	0
WITH CAP	1
WITH TAPE (RECEPTACLE ONLY)	2

PACKAGING	W
TUBE	2
PRESSURE SEALED TAPE & REEL	3

NOTE 4

Y	HEADER HEIGHT	RECEPTACLE HEIGHT	MATED HEIGHT	+0.10 -0.08 [+.25] [-.20]
1	.034 [.86]	.129 [3.28]	.163 [4.15]	
2	.048 [1.23]		.177 [4.50]	
3	.068 [1.73]		.197 [5.00]	
4	.107 [2.72]	SEE Y=1 FOR ALL RECEPTACLES	.236 [6.00]	
5	.1465 [3.721]		.276 [7.00]	
6	.088 [2.23]		.216 [5.50]	
7	.1665 [4.229]		.296 [7.52]	

*
**

* NOTE 8
** NOTE 9

X	PLATING
1	15u"/.38u GXT™
2	30u"/.76u GXT™

ZZ	NUMBER OF POSITIONS
09	9
11	11
15	15
21	21
25	25
31	31
41	41
51	51
69	69

EXAMPLE: 91921-31125LF
IS A CONAN RECEPTACLE ASSEMBLY,
HAVING NO PEGS AND WITH A PICK AND PLACE CAP.
IT ALSO HAS GXT™ PLATING, IS .13 [3.2] HIGH AND 25
POSITIONS AND IS PACKAGED IN PRESSURE SEALED TAPE,
REEL AND LEAD FREE.

mal'l. code		surface ISO 9002		tolerance ISO 406 ISO 1001		projection INCH/MM		product family CONAN	
lfr	ecn no	dr	date	tolerances unless otherwise specified		title CONAN™ CONNECTOR ASSEMBLY		dwg no	
AF				angles	linear	scale 5:1		sheet 7 of 7 size	
				0'±2'				91900 A3	
				dr	R. SEIPLE	11/13/91			
				engr	D. HORCHLER	01/10/92			
				chr	D. HORCHLER	01/10/92			
				appd	D. HORCHLER	01/10/92			
sheet	revision								
index	sheet								

PDM: Rev:AF

STATUS: Released

Printed: Oct 12, 2010