

PRODUCT NUMBER
76357-XXXLF

WHEN NEEDED, SUFFIX LETTER "LF"
INDICATES THE PRODUCT IS RoHS
COMPATIBLE, SEE NOTE 3

01: AWG 22-30
11: AWG 20

PLATING CODE

3= 0.76µm GOLD ON CONTACT AREA.
3.81µm TIN-LEAD ON TAIL.
4= 5µm TIN-LEAD ON CONTACT AREA.
3.81µm TIN-LEAD ON TAIL.

WHEN SUFFIX "LF" IS REQUIRED, 2µm MIN MATTE
TIN OVER 1.27 MIN Ni IS SUPPLIED INSTEAD OF SnPb.

NOTES:

- 1 - TERMINAL MATERIAL: PHOSPHOR BRONZE.
- 2 - PRODUCT PACKED IN PLASTIC BOX (1000/BOX).
- 3 - RoHS COMPATIBLE PRODUCT SPECIFICATIONS

a - PLATING:

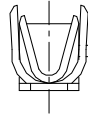
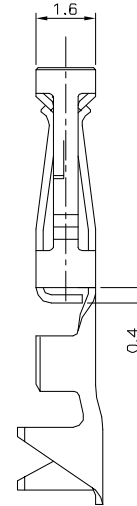
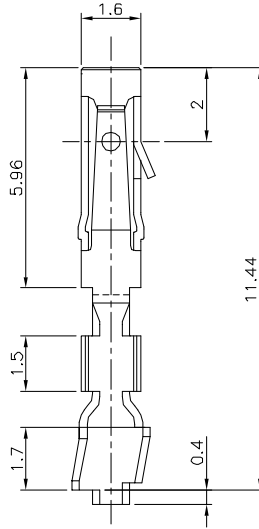
- "LF" MEANS THE PRODUCT IS LEAD-FREE,
2µm MINIMUM MATTE TIN OVER 1.27µm
MINIMUM NICKEL UNDERPLATE.

b - LABELING:

- MEETS PACKAGING SPECS AS PER GS-14-920

c - LEGAL STATEMENT: SEE GS-22-008

THE PRODUCT IS NOT INTENDED TO BE EXPOSED TO A



WIRE DIMENSION	
AWG	OUTSIDE INSULATION DIA.
20	1.30-1.65
22-30	0.90-1.50

mat'l. code		surface		tolerance		projection		product family	
		ISO 1302		ISO 486 ISO 1101		mm		DUBOX	
litr		date		tolerances unless otherwise specified		mm		title	
D	10759	-	88.04.05			mm		CtW CONTACT	
E	F00155	DLE	00.03.16	Linear		scale 10:1		LOOSE PIECE	
F	F10103	GCO	01.01.02			FCI		dwg no	
G	F04-0373	DLE	04.11.19	dr	D LEGRAND	00.03.16	sheet 1 of 1		size
H	F05-0286	DLE	05.11.07	enrg	P NIZZI	00.03.16	76357		A3
J	F06-0215	DLE	06.06.30	chr	JF NOTTEAU	00.03.16	type		
K	F06-0237	DLE	06.07.13	appd	PNZ	00.03.16	CUSTOMER		Drawing
sheet	revision								
index	sheet								