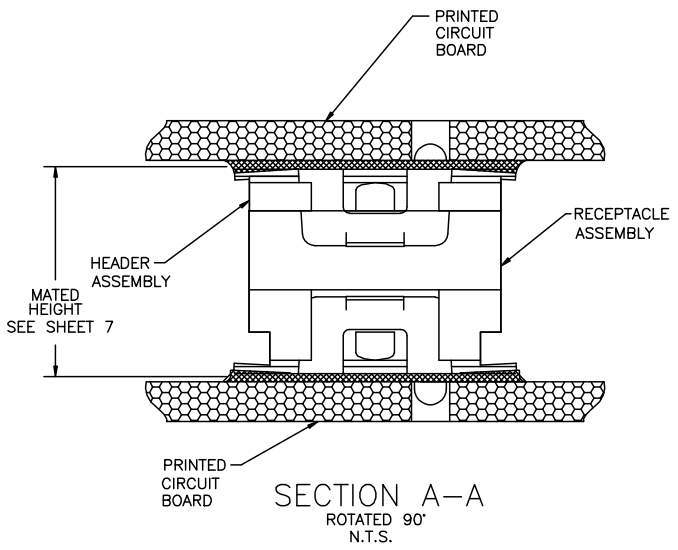


PRODUCT NUMBER
SEE TABLE



mal'l. code		surface	tolerance	projection	product family	
		ISO 1902	ISO 1436 ISO 1101		CONAN	
itr		tolerances unless otherwise specified		title		
ecn no	dr	date	angles	linear	INCH/MM	
Y V03-1347	AA	12/20/01	XXL01/XXL03		CONAN™ CONNECTOR ASSEMBLY	
AA M04-0190	MHT	9/24/04	XXXL005/XXXL013	scale 5:1	dwg no	
AB M05-0110	MHT	5/26/05	0'±2'		sheet 1 of 7	
AC M06-0232	AGS	06/12/08			size	
AD M06-0373	MHT	9/26/06	dr R.SEIPLE	11/13/91	A3	
AE M08-0012	AGS	1/11/08	chr D.HORCHLER	01/10/92	91900	
AF M08-0287	MHT	10/02/08	appd D.HORCHLER	01/10/92	type	
sheet	revision	AF	AF	AF	AF	Product Customer Drawing
index	sheet	1	2	3	4	5



PDM: Rev:AF

STATUS:Released

Printed: Oct 12, 2010



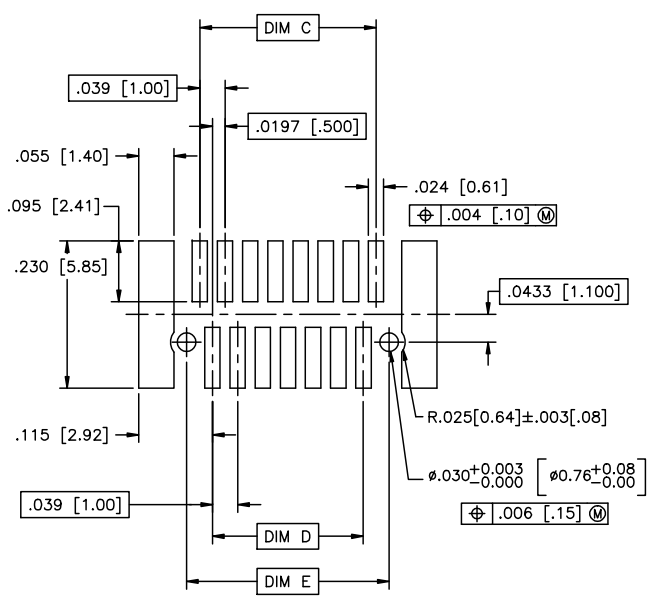
Copyright FCI

PRODUCT NUMBER
SEE TABLE

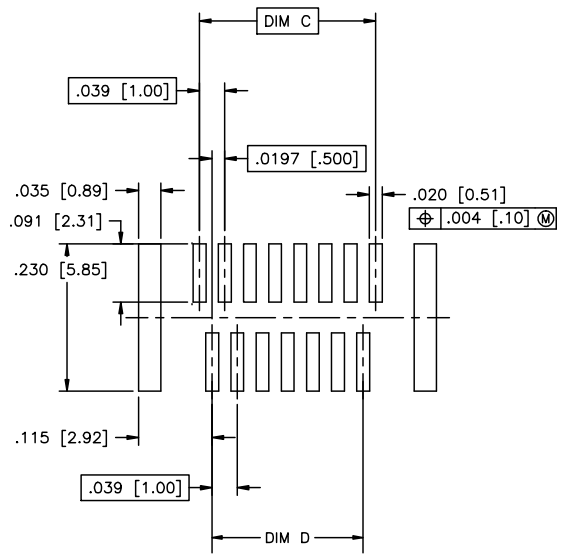


mal'l. code		surface		tolerance	projection	product family	
ISO 1902		ISO 1436		ISO 1001	INCH/MM	CONAN	
AF		tolerances unless otherwise specified		linear		title	
		angles		linear	CONAN™ CONNECTOR ASSEMBLY		
		0° ± 2°		linear	scale 5:1		
		dr		R. SEIPLE	11/13/91		
		eng		D. HORCHLER	01/10/92		
		chr		D. HORCHLER	01/10/92		
		appd		D. HORCHLER	01/10/92		
sheet	revision			FCJ		dwg no	
index	sheet					91900	
						sheet 4 of 7	
						size	
						A3	
						type	
						Product Customer Drawing	

PRODUCT NUMBER
SEE TABLE



RECOMMENDED
PAD LAYOUT




RECOMMENDED
STENCIL LAYOUT
FOR HEADER

mal't. code		surface		tolerance	projection	product family	
ISO 1902		ISO 1902		ISO 1436 ISO 1001	1st angle	CONAN	
itr		ecn no		date		title	
AF						CONAN™ CONNECTOR ASSEMBLY	
angles		linear		INCH/MM		dwg no	
0° ± 2°		XXXL01/XXXL03 XXXL05/XXXL13 XXXL20/XXXL06		scale 5:1		sheet 5 of 7	
dr		engr		chr		app	
R.SEIPLE 11/13/91		D.HORCHLER 01/10/92		D.HORCHLER 01/10/92		D.HORCHLER 01/10/92	
sheet		revision		sheet		size	
index						A3	
						type Product Customer Drawing	

PRODUCT NUMBER	POS	DIM "A"	DIM "C"	DIM "D"	DIM "E"
919TC-WXY09					
↑ -WXY09LF	9	.366 [9.30]	.157 [4.00]	.118 [3.00]	.1990 [5.055]
-WXY11	11	.406 [10.30]	.197 [5.00]	.157 [4.00]	.2380 [6.045]
-WXY15	15	.484 [12.30]	.276 [7.00]	.236 [6.00]	.3170 [8.052]
-WXY21	21	.602 [15.30]	.394 [10.00]	.354 [9.00]	.4350 [11.049]
-WXY25	25	.681 [17.30]	.472 [12.00]	.433 [11.00]	.5140 [13.056]
-WXY31	31	.800 [20.30]	.591 [15.00]	.551 [14.00]	.6320 [16.053]
-WXY41	41	.996 [25.30]	.787 [20.00]	.748 [19.00]	.8290 [21.057]
-WXY51	51	1.193 [30.30]	.984 [25.00]	.945 [24.00]	1.0260 [26.060]
-WXY69	69	1.547 [39.30]	1.339 [34.00]	1.299 [33.00]	1.3800 [35.052]
↓ -WXY69LF					

NOTES:

- MATERIALS:
 RECEPTACLE HOUSING - LCP, UL-94V-0. COLOR: NATURAL.
 RECEPTACLE TERMINALS - COPPER ALLOY, PLATED WITH 15u"/.38u GXT™ IN CONTACT AREA AND 100u"/2.54u Sn ON SOLDER LEGS WITH AN OVERALL 50u"/1.27u Ni UNDERPLATE.
 HEADER HOUSING - LCP, UL-94V-0. COLOR: NATURAL.
 HEADER TERMINALS - COPPER ALLOY, PLATED WITH 15u"/.38u GXT™ IN CONTACT AREA AND 100u"/2.54u Sn ON SOLDER LEGS WITH AN OVERALL 50u"/1.27u Ni UNDERPLATE.
 RETENTION DEVICE - BRASS, PLATED WITH 100u"/2.54u Sn OVER NICKEL.
- REFERENCE GS-12-006 FOR PRODUCT PERFORMANCE DATA.
- SEE TA-774 FOR FURTHER DESCRIPTION OF HOW THIS DIMENSION IS APPLIED.
- PICK AND PLACE CAP OR TAPE IS ONLY AVAILABLE WITH OPTION 3 PACKAGING. (PSA ADHESIVE SEALED). ALSO, PSA PACKAGING REQUIRES A PICK AND PLACE CAP.
- RECOMMENDED SOLDER PASTE THICKNESS IS .006 TO .008 INCHES THICK.
- THE TOE HEIGHT OF THE SOLDER TAIL SHALL BE MEASURED FROM THE LOWEST POINT OF THE .004 CO-PLANARITY GRAVITY PLANE. THIS MEASUREMENT IS NOT TO EXCEED A WINDOW OF .000 TO .007 INCHES.
- THREE SLOTS MAY BE LOCATED AT EITHER END OF HOUSING.
- 5.50mm MATED HEIGHT IS ONLY AVAILABLE IN 9, 15 AND 31 POS.
- 7.50mm MATED HEIGHT IS ONLY AVAILABLE IN 9 POS.
- APPLIES TO 91921-3XYZZ AND 91931-3XYZZ OPTIONS ONLY.
- THE HOUSING WILL WITHSTAND EXPOSURE TO 260°C PEAK TEMPERATURE FOR 30 SECONDS IN A CONVECTION INFRA RED OR VAPOR PHASE REFLOW OVEN. SEE APPLICATION/PROCEDURES IF THEY ARE AVAILABLE.
- PRODUCT WITH "LF" AT THE END MEETS EUROPEAN UNION DIRECTIVES AND OTHER COUNTRY REGULATION AS DESCRIBED IN GS-22-008.

mal'l. code	surface ISO 1902	tolerance ISO 406 ISO 1001	projection	product family CONAN
lfr	ecn no	dr	date	tolerances unless otherwise specified
AF				angles linear XXX±.01/XXX±.03 XXX±.005/XXX±.013 0'±2' XXX±.000/XXX±.005
		dr	R.SEIPLE 11/13/91	INCH/MM
		eng	D.HORCHLER 01/10/92	scale 5:1
		chr	D.HORCHLER 01/10/92	
		appd	D.HORCHLER 01/10/92	
sheet	revision	title CONAN™ CONNECTOR ASSEMBLY		
index	sheet	dwg no 91900		
		sheet 6 of 7 size A3		
		type Product Customer Drawing		

PRODUCT NUMBER
SEE TABLE

CONAN ASSEMBLY PART NUMBER

919 T C - W X Y ZZ LF

LEAD FREE OPTION
SEE NOTE 12

TYPE	T
HEADER WITH NO PEGS	0
HEADER WITH PEGS	1
RECEPTACLE WITH NO PEGS	2
RECEPTACLE WITH PEGS	3

PICK AND PLACE CAP OR TAPE (NOTE 4)	C
WITHOUT CAP OR TAPE	0
WITH CAP	1
WITH TAPE (RECEPTACLE ONLY)	2

PACKAGING	W
TUBE	2
PRESSURE SEALED TAPE & REEL	3

NOTE 4

Y	HEADER HEIGHT	RECEPTACLE HEIGHT	MATED HEIGHT	+0.10 -0.08 [+.25] [-.20]
1	.034 [.86]	.129 [3.28]	.163 [4.15]	
2	.048 [1.23]		.177 [4.50]	
3	.068 [1.73]		.197 [5.00]	
4	.107 [2.72]		.236 [6.00]	
5	.1465 [3.721]		.276 [7.00]	
6	.088 [2.23]		.216 [5.50]	
7	.1665 [4.229]		.296 [7.52]	

SEE Y=1
FOR ALL
RECEPTACLES

* NOTE 8
** NOTE 9

X	PLATING
1	15u"/.38u GXT™
2	30u"/.76u GXT™

ZZ	NUMBER OF POSITIONS
09	9
11	11
15	15
21	21
25	25
31	31
41	41
51	51
69	69

EXAMPLE: 91921-31125LF
IS A CONAN RECEPTACLE ASSEMBLY,
HAVING NO PEGS AND WITH A PICK AND PLACE CAP.
IT ALSO HAS GXT™ PLATING, IS .13 [3.2] HIGH AND 25
POSITIONS AND IS PACKAGED IN PRESSURE SEALED TAPE,
REEL AND LEAD FREE.

mal'l. code		surface	tolerance	projection	product family
ISO 902		ISO 406	ISO 1001	CONAN	CONAN
itr	ecn no	dr	date	title	
AF				CONAN™ CONNECTOR ASSEMBLY	
angles		linear	XX±.01/XX±0.3	INCH/MM	
0'±2'			XXX±.005/XX±0.13	scale 5:1	
dr	R.SEIPLE		11/13/91	dwg no	
eng	D.HORCHLER		01/10/92	sheet 7 of 7	
chr	D.HORCHLER		01/10/92	size	
appd	D.HORCHLER		01/10/92	A3	
sheet index	revision sheet			type Product Customer Drawing	

PDM: Rev:AF

STATUS: Released

Printed: Oct 12, 2010