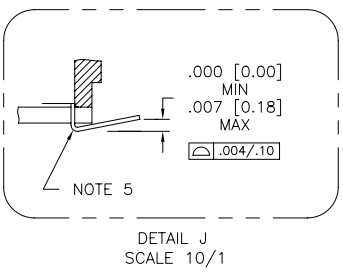
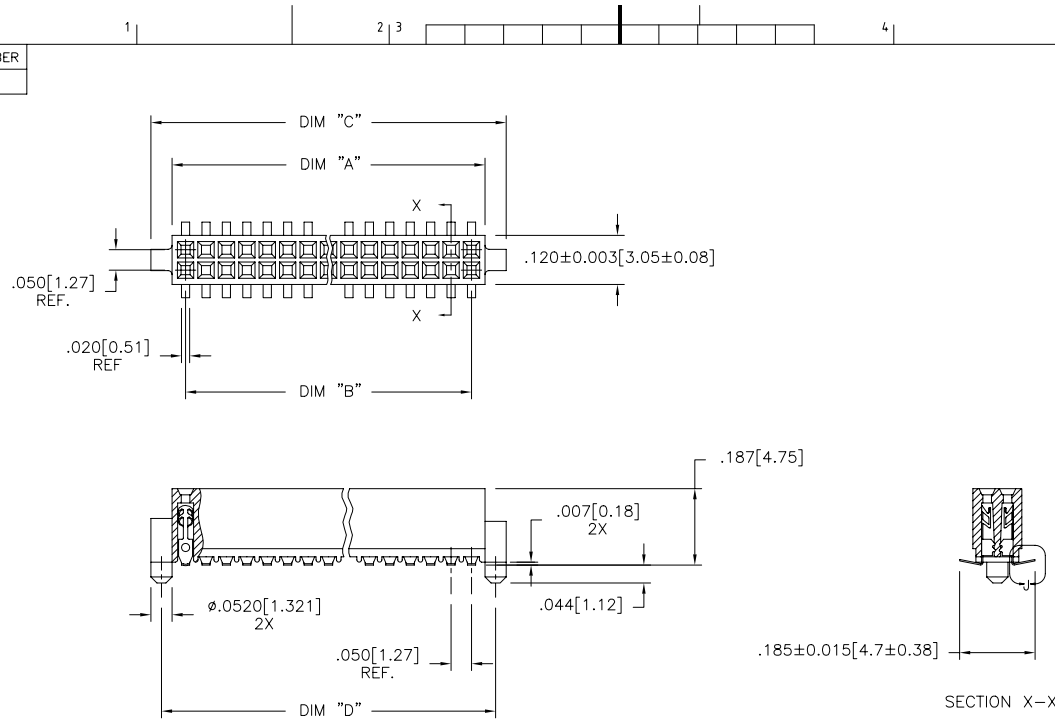


PRODUCT NUMBER
SEE TABLE



mat'l. code		surface		tolerance		projection		product family					
-		ISO 1302		ISO 406 ISO 1101				RIB CAGE					
itr		ecn no		date		tolerances unless otherwise specified		title					
AB	V11674	CRG	6/22/01	angles		<table border="1"> <tr> <td>xx</td> <td>±.01/.3</td> </tr> <tr> <td>xxx</td> <td>±.005/.13</td> </tr> </table>		xx	±.01/.3	xxx	±.005/.13	.050cc VERT. CARD CONN.	
xx	±.01/.3												
xxx	±.005/.13												
AC	M05-0084	MHT	5/05/05	linear		<table border="1"> <tr> <td>xxxx</td> <td>±.0020/.050</td> </tr> </table>		xxxx	±.0020/.050	SURF. MT. W/LOC. FEATURES			
xxxx	±.0020/.050												
AD	M06-0284	AEA	7/27/06	σ±z		<table border="1"> <tr> <td>scale</td> <td>3:1</td> </tr> </table>		scale	3:1	dwg no			
scale	3:1												
AE	M07-0267	MHT	6/08/07	dr				sheet 1 of 4 size					
AF	M07-0345	AGS	7/26/07	engr		M. CLOUSER 5/25/91		A3					
AG	M09-0058	CMR	4/06/09	chr		B. BARUFFALO 5/25/91		87023					
AH	N10-0174	YOH	6/17/10	appd		B. BARUFFALO 5/25/91		type					
sheet	revision	AH	AH	AH	AH	Product Customer Drawing							
index	sheet	1	2	3	4								

PDM: Rev:AH STATUS:Released Printed: Jun 26, 2010

PRODUCT NO.
87023 - XXX

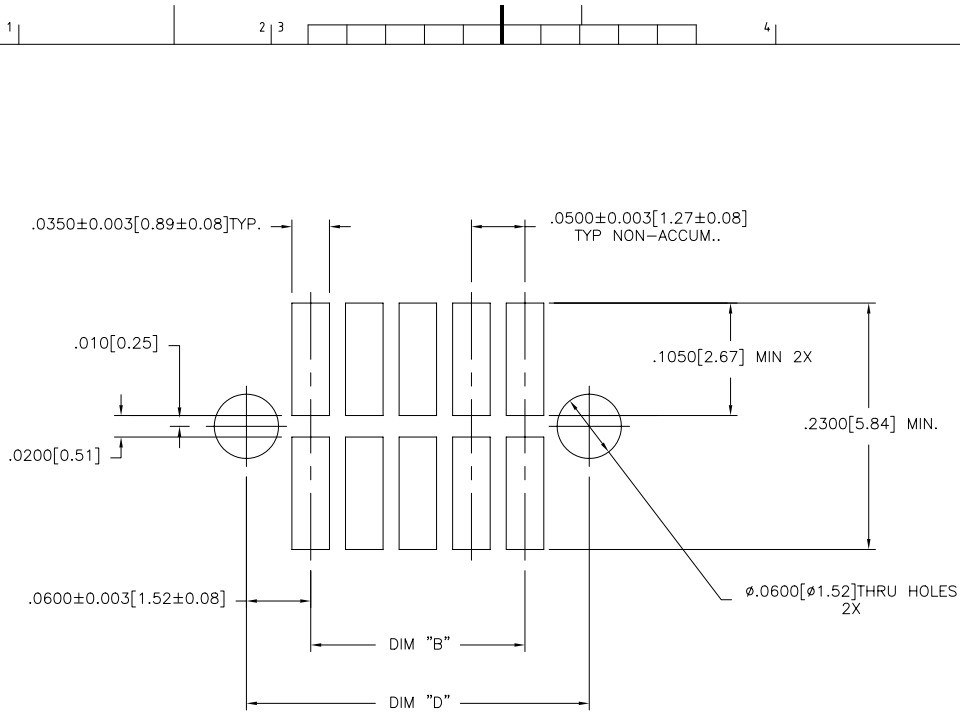


FIGURE A
RECOMMENDED
P.C.B. LAYOUT

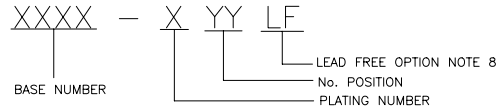
mat'l. code		surface		tolerance		projection		product family	
-		ISO 1302		ISO 406 ISO 1101				RIB CAGE	
ttr		ecn no	dr	date				title	
AH								.050cc VERT. CARD CONN. SURF. MT. W/LOC. FEATURES	
		angles		linear		scale		dwg no	
				$XX \pm .01/.3$ $XXX \pm .005/.13$ $XXXX \pm .0020/.050$		3:1		sheet 2 of 4 size	
		dr		M. CLOUSER 5/25/91				87023	
		engr		B. BARUFFALO 5/25/91				A3	
		chr		B. BARUFFALO 5/25/91				type	
		appd		B. BARUFFALO 5/25/91				Product Customer Drawing	
sheet		revision							
index		sheet							

PDM: Rev:AH

STATUS: Released

Printed: Jun 26, 2010

PRODUCT NO. NOTE 8	SIZE	DIM A	DIM B	DIM C	DIM D	SPECIAL PACKAGING	TAPE WIDTH	PITCH	PIECES PER REEL
87023-605	2 X 5	.266/6.756	.200/5.08	.370/9.398	.3200/8.128	NOTE 6	24mm	12mm	750
-610	2 X 10	.516/13.106	.450/11.43	.620/15.748	.5700/14.478	NOTE 6	24mm	12mm	750
-615	2 X 15	.766/19.456	.700/17.78	.870/22.098	.8200/20.828	NOTE 6	44mm	12mm	500
-620	2 X 20	1.016/25.806	.950/24.13	1.120/28.448	1.0700/27.178	NOTE 6 & 7	44mm	12mm	500
-625	2 X 25	1.266/32.156	1.200/30.48	1.370/34.798	1.3200/33.528	NOTE 6	56mm	12mm	500
-630	2 X 30	1.516/38.506	1.450/36.83	1.620/41.148	1.5700/39.878	NOTE 6 & 7	56mm	12mm	500
-635	2 X 35	1.766/44.856	1.700/43.18	1.870/47.498	1.8200/46.228	NOTE 6	72mm	12mm	500
-640	2 X 40	2.016/51.206	1.950/49.53	2.120/53.848	2.0700/52.578	NOTE 6 & 7	72mm	12mm	500
-645	2 X 45	2.266/57.556	2.200/55.88	2.370/60.198	2.3200/58.928	NOTE 6	72mm	12mm	500
-650	2 X 50	2.516/63.906	2.450/62.23	2.620/66.548	2.5700/65.278	NOTE 6	88mm	12mm	500
-905	2 X 5	.266/6.756	.200/5.08	.370/9.398	.3200/8.128	NO	---	---	---
-910	2 X 10	.516/13.106	.450/11.43	.620/15.748	.5700/14.478	NO	---	---	---
-915	2 X 15	.766/19.456	.700/17.78	.870/22.098	.8200/20.828	NO	---	---	---
-920	2 X 20	1.016/25.806	.950/24.13	1.120/28.448	1.0700/27.178	NO	---	---	---
-925	2 X 25	1.266/32.156	1.200/30.48	1.370/34.798	1.3200/33.528	NO	---	---	---
-930	2 X 30	1.516/38.506	1.450/36.83	1.620/41.148	1.5700/39.878	NO	---	---	---
-935	2 X 35	1.766/44.856	1.700/43.18	1.870/47.498	1.8200/46.228	NO	---	---	---
-940	2 X 40	2.016/51.206	1.950/49.53	2.120/53.848	2.0700/52.578	NO	---	---	---
-945	2 X 45	2.266/57.556	2.200/55.88	2.370/60.198	2.3200/58.928	NO	---	---	---
87023-950	2 X 50	2.516/63.906	2.450/62.23	2.620/66.548	2.5700/65.278	NO	---	---	---



NOTES:

- HOUSING MATERIAL:
GLASS FILLED THERMOPLASTIC FLAME RETARDANT PER UL 94V-0
COLOR: NATURAL
- TERMINAL MATERIAL: BeCu
- TERMINAL PLATING:
-6XXLF: 30u"/.76um MIN HARD GOLD OVER Ni ON CONTACT ZONES.
100u"/2.54um MIN PURE TIN OVER Ni
IN SOLDERING ZONES, OTHERWISE GOLD FLASH OR UNPLATED.
-9XXLF: 60u"/1.52um MIN HARD GOLD ON CONTACT ZONES,
100u"/2.54um MIN PURE TIN OVER Ni
OVER Ni IN SOLDERING ZONES, OTHERWISE GOLD FLASH OR UNPLATED.
- APPLICATION INFORMATION:
A. RECOMMENDED MOUNTING PAD PATTERN IS SHOWN IN FIGURE "A".
B. MATING PINS TO BE .0176/.447 TO .0181/.459 DIA.
C. MATING PIN TIPS TO BE IN TRUE POSITION TO MATING GRID WITHIN .006/.15 DIA.
D. SUGGESTED MATING PIN LENGTH .130/3.30 ±.010/.25.

- LEAD TIPS TO BE ABOVE HEEL, UP TO .007/0.18 MAX. COPLANARITY TO BE MEASURED AT LOWEST POINT (HEEL).
- ADD "TR" TO END OF DASH NUMBER FOR TAPE AND REEL PACKAGED WITH CAP. TOOLED ONLY FOR NOTED CONNECTORS.
- ADD "CT" TO END OF DASH NUMBER FOR CONNECTOR WITH CAP FOR VACUUM PICKUP IN TUBE.
- ADD LF SUFFIX AT THE END OF PART NUMBER FOR LEAD FREE OPTION.
- THE HOUSING WILL WITHSTAND EXPOSURE TO 260°C PEAK TEMPERATURE FOR 20 SECONDS IN A CONVECTION, INFRA-RED OR VAPOR PHASE REFLOW OVEN. SEE APPLICATION NOTE/PROCEDURES IF THEY ARE AVAILABLE.
- THIS PRODUCT MEETS EUROPEAN UNION DIRECTIVES AND OTHER COUNTRY REGULATION AS DESCRIBED IN GS-22-008.

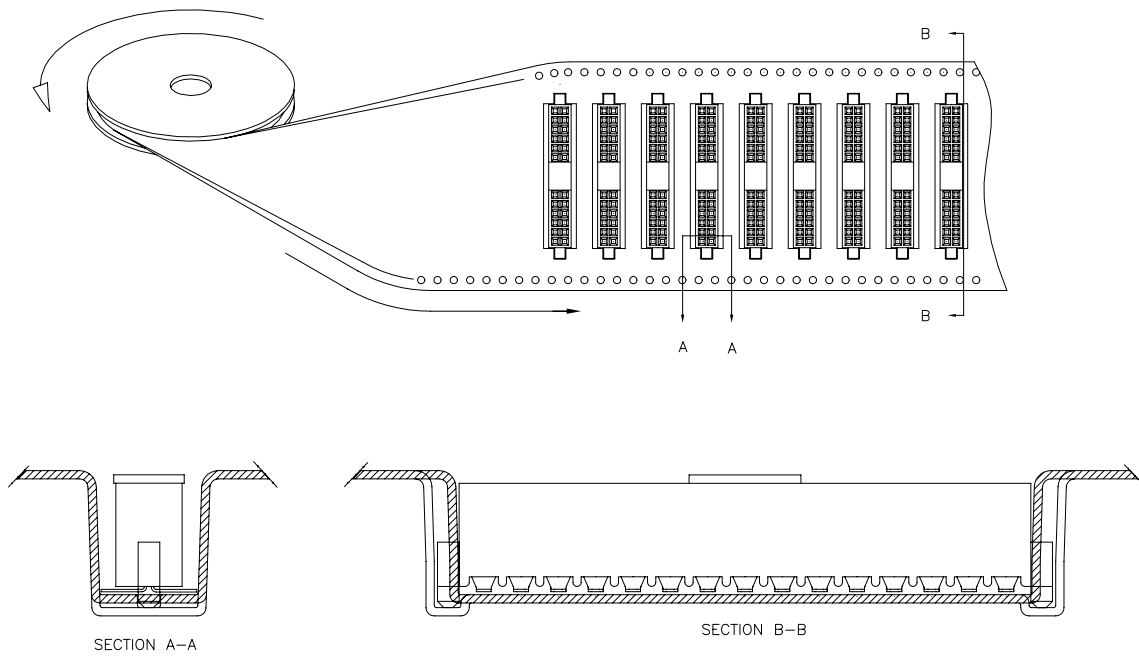
mal'l. code	surface ISO 1302	tolerance ISO 406 ISO 1101	projection	product family
lfr	ecn no	dr	date	RIB CAGE
AH				title
	angles	linear	linear	.050cc VERT. CARD CONN. SURF. MT. W/LOC. FEATURES
	dr	engr	chr	scale 3:1
	appd	M. CLOUSER 5/25/91	B. BARUFFALO 5/25/91	scale 3:1
		B. BARUFFALO 5/25/91	B. BARUFFALO 5/25/91	scale 3:1
sheet index	revision sheet			dwg no 87023 sheet 3 of 4 size A3
				type Product Customer Drawing

PRODUCT NUMBER
SEE TABLE

UNREELING
DIRECTION

REFERENCE ONLY

TAPE WIDTH'S 32mm AND ABOVE HAS BOTH FEED TRACKS,
BELOW 32mm HAS TOP FEED TRACK ONLY.



SECTION A-A

SECTION B-B

mat'l. code		surface	tolerance	projection	product family
-		ISO 1302	ISO 406 ISO 1101		RIB CAGE
itr		ecn no		title	
AH				.050cc VERT. CARD CONN. SURF. MT. W/LOC. FEATURES	
dr		date		scale	
				3:1	
angles		linear		INCH/MM	
dr		M. CLOUSER 5/25/91		dwg no	
enr		B. BARUFFALO 5/25/91		87023	
chr		B. BARUFFALO 5/25/91		sheet 4 of 4 size	
appd		B. BARUFFALO 5/25/91		A3	
sheet		revision		type	
index		sheet		Product Customer Drawing	

PDM: Rev:AH

STATUS:Released

Printed: Jun 26, 2010