

PRODUCT NUMBER  
76347-YXXLF

WHEN NEEDED, SUFFIX LETTER "LF"  
INDICATES THE PRODUCT IS RoHS  
COMPATIBLE, SEE NOTE 3

DEPENDS ON:  
INSULATION BARREL,  
WIRE BARREL AWG RANGE,  
REELING METHOD,  
NUMBER OF PRODUCT.  
SEE TABLE SHEET 2/2.

PLATING CODE  
3= 0.76µm GOLD ON CONTACT AREA.  
3.81µm TIN-LEAD ON TAIL.  
4= 5µm TIN-LEAD ON CONTACT AREA.  
3.81µm TIN-LEAD ON TAIL.

WHEN SUFFIX "LF" IS REQUIRED, 2µm MIN MATTE  
TIN OVER 1.27 MIN Ni IS SUPPLIED INSTEAD OF SnPb.

NOTES:

- 1 - TERMINAL MATERIAL: PHOSPHOR BRONZE.
- 2 - PRODUCT PACKED IN REEL.
- 3 - RoHS COMPATIBLE PRODUCT SPECIFICATIONS

a - PLATING:

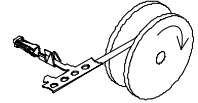
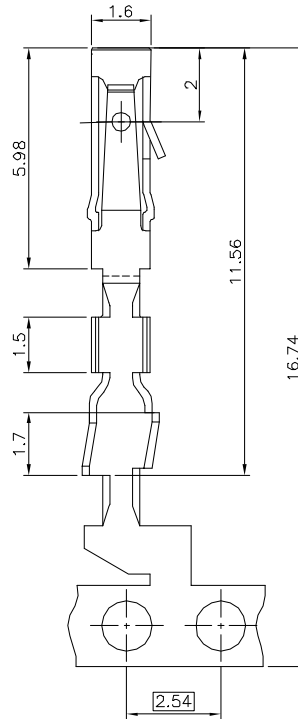
- "LF" MEANS THE PRODUCT IS LEAD-FREE,  
2µm MINIMUM MATTE TIN OVER 1.27µm  
MINIMUM NICKEL UNDERPLATE.

b - LABELING:

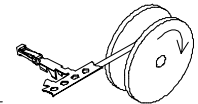
- MEETS PACKAGING SPECS AS PER GS-14-920

c - LEGAL STATEMENT: SEE GS-22-008

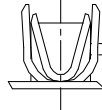
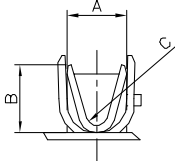
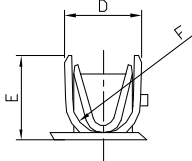
THE PRODUCT IS NOT INTENDED TO BE EXPOSED TO A



REELING METHOD P



REELING METHOD R



mat'l. code	surface	tolerance	projection	product family
Ltr	ISO 1382	ISO 486 ISO 1181	ISO 10	DUBOX
S F06-0237 DLE	06.07.103	tolerances unless otherwise specified	mm	title
	angles	±0.13	linear	CtW CONTACT ON REEL
L F04-0145 DLE	04.02.25	±z	scale 10:1	dwg no
M F04-0360 DLE	04.10.11 dr	G CORBOZ	00.12.22	sheet 1 of 2
N F04-0373 DLE	04.11.19 engr	P NZZI	00.12.22	size
P F05-0286 DLE	05.11.07 chr			76347
R F06-0214 DLE	06.06.30 appd	P N	00.12.22	A3
sheet	revision	S	D	type
index	sheet	1	2	CUSTOMER Drawing

PRODUCT NUMBER	WIRE BARREL			INSULATION BARREL				REELING		APPLICATION DATA	
	AWG SIZE	A	B	C	INSULATION DIA RANGE	D	E	F	METHOD		PRODUCTS
76347-X01(LF)	22-30	1.6	1.6	0.3	0.9-1.5	2.1	2.6	0.8	P	15 000	TA 317
76347-X02(LF)	22-30	1.6	1.6	0.3	0.9-1.5	2.1	2.6	0.8	R	15 000	TA 317
76347-X03(LF)	22-30	1.6	1.6	0.3	0.9-1.5	2.1	2.6	0.8	R	500	TA 317
76347-X11(LF)	20-22	2.1	2.0	0.6	1.1-1.6	2.4	2.2	0.8	P	15 000	TA 317
76347-X12(LF)	20-22	2.1	2.0	0.6	1.1-1.6	2.4	2.2	0.8	R	15 000	TA 317
76347-X41(LF)	28-32	1.7	1.0	0.3	0.55-0.8	1.3	1.3	0.3	P	15 000	TA 340
76347-X42(LF)	28-32	1.7	1.0	0.3	0.55-0.8	1.3	1.3	0.3	R	15 000	TA 340

mat'l. code		surface <input checked="" type="checkbox"/> ISO 1992 <input type="checkbox"/> ISO 486 ISO 1101		tolerance <input type="checkbox"/> ISO 486 ISO 1101 <input type="checkbox"/> otherwise specified		projection		product family DUBOX	
Ltr	ecm no	dr	date	tolerances unless otherwise specified		mm		title	
A	F10103	GCO	00.12.22	angles	linear	scale 2.5:1		CtW CONTACT ON REEL	
B	F10527	GSA	01.09.20					dwg no 76347 sheet 2 of 2 size A3	
C	F04-0373	DLE	04.11.19					type CUSTOMER Drawing	
D	F06-0214	DLE	06.06.30	dr	G CORBOZ	00.12.22			
				engr	P NIZZI	00.12.22			
				chr	P N	00.12.22			
				appd					
sheet index	revision sheet								

PDM: Rev:S STATUS:Released Printed: Sep 15, 2009