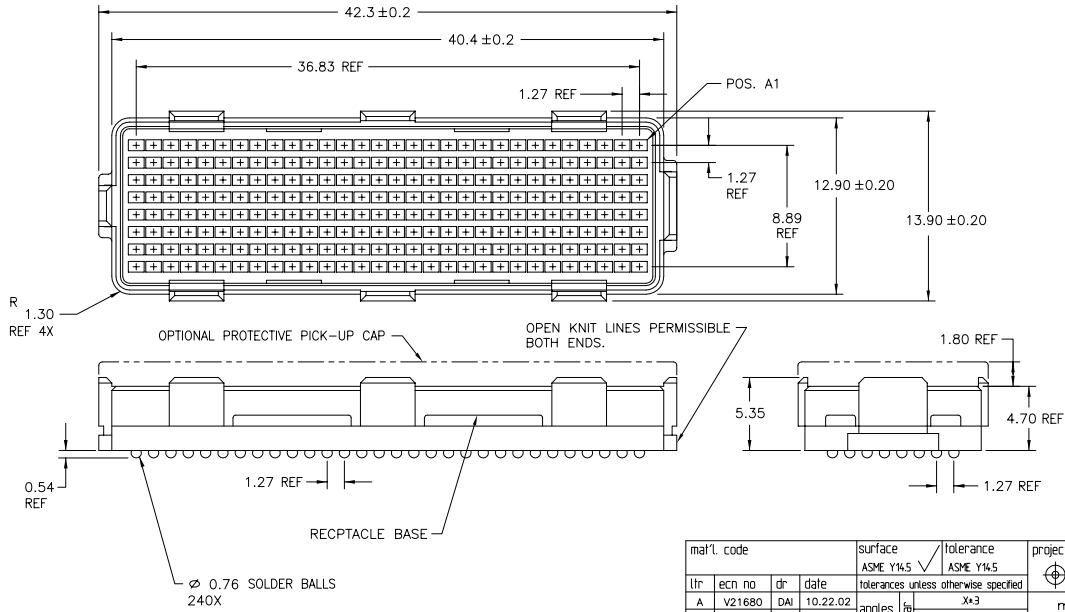


Copyright FCJ



FCJconnect.com

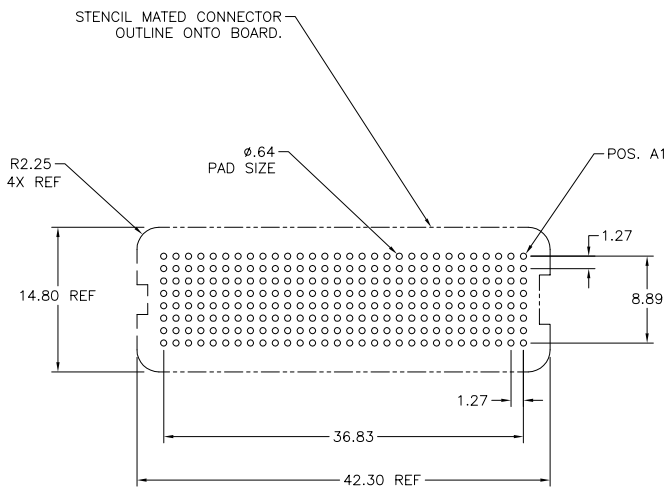
PRODUCT NUMBER	PICK-UP CAP	CONTACT PLATING	SOLDER BALL
55755-001	YES	15u" (.38um) Au OVER Ni	SnPb
55755-001LF			SnAgCu LEAD FREE (4)(5)
55755-101	YES	30u" (.76um) Au OVER Ni	SnPb
55755-101LF			SnAgCu LEAD FREE (4)(5)
55755-201	YES	SEE NOTE 3	SnPb
55755-201LF			SnAgCu LEAD FREE (4)(5)



mat'l. code		surface		tolerance		projection		product family	
itr	ecn no	dr	date	ASME Y14.5	ASME Y14.5	ASME Y14.5	ASME Y14.5	title	sheet 1 of 2
A	v21680	DAI	10.22.02	tolerances unless otherwise specified	xxx3	mm	scale 3:1	6mm RECPT. ASSY. 8x30= 240 POS.	A4
B	v03-0403	DAI	04/08/03	angles	xxx B				
C	v04-0940	VS	10/15/04	0° ± 2°	xxxx051				
D	v06-0560	LP	2006/06/22	enr	D.WAUGHEN	1.31.02			
				chr	J. KONTOS	1.31.02			
				appd	J. KONTOS	1.31.02			
sheet index	revision sheet	D	D						
		1	2						

PDM: Rev:D STATUS:Released Printed: Dec 01, 2010

form: A6mmXLc



BOARD PATTERN

NOTES:

- ① **MAT'L:**
HOUSING: LCP
CONTACT: COPPER ALLOY
- PLATING:**
CONTACT: (SEE TABLE ON SHEET1)
SOLDER BALL: (SEE TABLE ON SHEET1)
EUTECTIC SnPb OR LEAD FREE
95.5Sn/4Ag/0.5Cu
2. OVERALL BOARD-TO-BOARD STACK HEIGHT WHEN MATED TO P/N 74213 (240 0mm PLUG) IS 6mm REF
- ③ PLATING FOR -2XX SERIES DASH NOS. IS Au OVER Ni WITH SPECIAL CONTACT GEOMETRY TO MEET REQUIREMENTS TELCORDIA GR-1217-CORE: CENTRAL OFFICE ENVIRONMENT
- ④ FOR PROPER APPLICATION FOLLOW FCI APPLICATION SPECIFICATION GS-20-033 LEAD FREE SOLDER BALLS WILL NOT SOLDER PROPERLY IN A LEADED SOLDER PROCESS DUE TO A HIGHER REFLOW TEMPERATURE. LEAD FREE PRODUCT IS THEREFORE NOT BACKWARDS COMPATIBLE WITH LEADED OR SOME SOLDERING APPLICATIONS. REFERENCE FCI APPLICATION SPECIFICATION
- ⑤ THIS PRODUCT MEETS EUROPEAN UNION DIRECTIVES AND OTHER COUNTRY REGULATIONS AS DESCRIBED IN GS-22-008 PRODUCT MEETING THIS DIRECTIVE IS IDENTIFIED IN THE LOT CODE NUMBER MARKED ON EACH PART BY HAVING AN "X" IN THE SEVENTH CHARACTER POSITION

mat'l. code		surface		tolerance		projection		product family	
		ASME Y14.5		ASME Y14.5				MEG-ARRAY	
titr ecn no dr date		tolerances unless otherwise specified		angles		mm		title	
				° ±2'		scale 2:1		6mm RECPT. ASSY. 8x30= 240 POS.	
		dr D.WAUGHEN 1.31.02		engr J. KONTOS 1.31.02				dwg no 55755 sheet 2 of 2 size A4	
		chr J. KONTOS 1.31.02		appd J. KONTOS 1.31.02				type CUSTOMER Drawing	
sheet index		revision sheet							

PDM: Rev:D

STATUS:Released

Printed: Dec 01, 2010