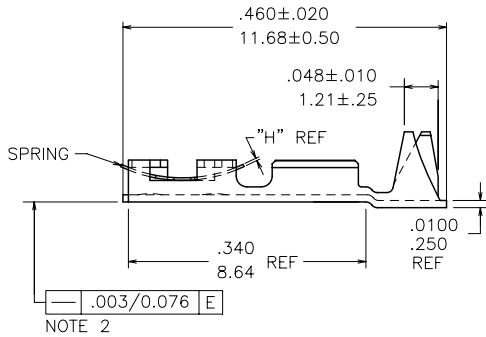
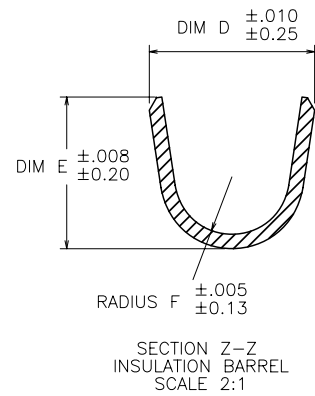
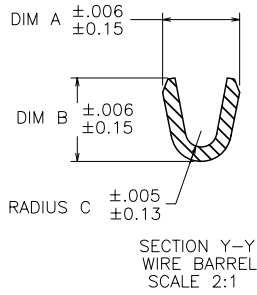
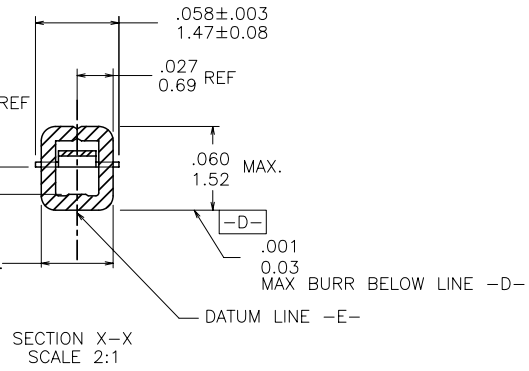
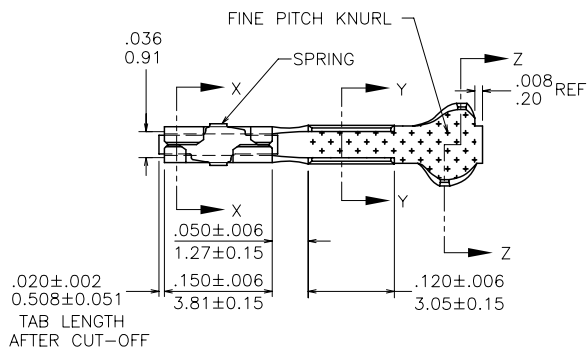


PRODUCT NUMBER
SEE SHEET 3



mat'l code		surface		tolerance		projection		product family	
SEE TABLE		✓		tolerances unless otherwise specified		INCH/MM		PV TERMINALS	
lir	ecn no	dr	date	angles	linear	XX±.01/XX±.3	scale 5:1	title	
AG	v07-0218	HTB	2007-09-16			XXX±.005/XXX±.13		MINI PV™ RECEPTACLE	
AB	v05-0447	HTB	2005-05-12			XXXX±.020/XXXX±.051		CRIMP TO WIRE	
AC	v05-0517	HTB	2005-05-24	dr	T. BREWBAKER	2006-04-18		dwg no	sheet 1 of 6
AD	v05-0530	HTB	2005-05-31	engr	T. BREWBAKER	2006-04-18		47212	A3
AE	v06-0197	HTB	2006-03-03	chr	T. BREWBAKER	2006-04-18		type Product Customer Drawing	
AF	v06-0303	HTB	2006-04-18	app'd	T. BREWBAKER	2006-04-18			
sheet index	revision sheet	AG	AG	AG	AG	AG	AG		
		1	2	3	4	5	6		

PRODUCT NUMBER SEE SHEET 3	WIRE BARREL			INSULATION BARREL				
	AWG RANGE	DIM A	DIM B	RADIUS C	INSULATION DIAMETER RANGE	DIM D	DIM E	RADIUS F
	18-20	.104/2.64	.104/2.64	.021/.53	.042/1.07-.103/2.62	.139/3.53	.120/3.05	.050/1.27
	22-26	.070/1.78	.070/1.78	.017/.43	.036/.91-.103/2.62	.139/3.53	.120/3.05	.050/1.27
	28-32	.054/1.37	.058/1.47	.011/.28	.028/.71-.054/1.37	.115/2.92	.105/2.67	.040/1.02

NOTES:

1. TERMINAL MATES WITH .025±.002/0.64±0.05 SQUARE OR ROUND PIN.
- ② WHEN MEASURED ALONG DATUM -E- WITHIN .340/8.64 REF DIM.
3. PRODUCT SPECIFICATION: BUS-12-067.
APPLICATION SPECIFICATIONS:
TA-75: TERMINAL DATA FOR USE WITH MINI LATCH HOUSING.
TA-146: TERMINAL DATA FOR CONTACTS NOT USED IN HOUSINGS.
TA-210: TERMINAL DATA FOR CONTACTS USED WITH MINI ROD HOUSINGS.
TA-228: APPLICATIONS USING 20 AWG WIRE.
TA-531: INSTALLING AND REMOVING TERMINALS.
- ④ ADD AN LF SUFFIX TO PART NUMBERS FOR PRODUCT THAT MEETS EUROPEAN UNION DIRECTIVES AND OTHER COUNTRY REGULATIONS AS DESCRIBED IN GS-22-008.
NOT AVAILABLE FOR TIN-LEAD PRODUCT.
5. THIS PRODUCT IS NOT INTENDED TO BE EXPOSED TO MANUFACTURING SOLDERING PROCESSES.
- ⑥ THIS PRODUCT HAS 100% TIN PLATING IN THE INTERFACE AND HAS NOT BEEN TESTED FOR WHISKER GROWTH IN ALL INTERCONNECT ENVIRONMENTS.

mat'l code	SEE TABLE	surface	tolerance	projection	product family
tr	ecm no	dr	date	tolerances unless otherwise specified	title
AG				angles	MINI PV™ RECEPTACLE
				linear	CRIMP TO WIRE
				linear	scale 1:1
				dr	FCJ
				engr	type Product Customer Drawing
				chr	
				appd	
sheet index	revision sheet				

MATERIAL & PLATING		SPRING THICKNESS DIM H±.0005/0.012	AWG RANGE	REELED NOTE 4	LOOSE NOTE 4	PLATING AVAILABILITY						
1/4 HARD BRASS BODY	Be/Cu SPRING					-000	-000LF	-001	-001LF	-002	-002LF	
UNDERPLATING: 50μ"/1.27μ Ni CONTACT AREA: 15μ"/0.38μ Au INSIDE BOX AREA: -000 Au FLASH -001LF 15μ"/0.38μ Au -002LF 6μ"/0.15μ Au REMAINDER: -000 Au FLASH -001LF 15μ"/0.38μ Au -002LF Au FLASH	Au FLASH	.0035/0.089	18-20	48241	48250	YES	YES	NO	NO	NO	NO	
			22-26	48242	48251	YES	YES	NO	NO	NO	NO	
			28-32	48243	48252	YES	YES	NO	NO	NO	NO	
		.0048/0.122	18-20	48244	48253	YES	YES	NO	NO	NO	NO	
			22-26	48245	48254	YES	YES	NO	NO	NO	YES*	
			28-32	48246	48255	YES	YES	NO	NO	NO	NO	
		.0058/0.147	18-20	94011	94014	NO	NO	NO	NO	NO	NO	OBS.
			22-26	94012	94015	NO	NO	NO	NO	NO	NO	OBS.
			28-32	94013	94016	NO	NO	NO	NO	NO	NO	OBS.
		.0065/0.165	18-20	48247	48256	YES	YES	NO	NO	NO	YES*	
			22-26	48248	48257	YES	YES	NO	NO	NO	YES*	
			28-32	48249	48258	YES	YES	NO	NO	NO	NO	
UNDERPLATING: 50μ"/1.27μ Ni CONTACT AREA: 30μ"/0.76μ Au INSIDE BOX AREA: -000 Au FLASH -001LF 30μ"/0.76μ Au -002LF 20μ"/0.50μ Au REMAINDER: -000 Au FLASH -001LF 30μ"/0.76μ Au -002LF 8μ"/0.20μ Au	Au FLASH	.0035/0.089	18-20	48231	48266	YES	YES	NO	NO	NO	NO	
			22-26	48049	48235	YES	YES	NO	NO	NO	YES	
			28-32	48048	48238	YES	YES	NO	NO	NO	YES	
		.0048/0.122	18-20	48047	48232	YES	YES	NO	NO	NO	YES	
			22-26	48046	48234	YES	YES	NO	NO	NO	YES	
			28-32	48045	48237	YES	YES	NO	YES	NO	YES	
		.0058/0.147	18-20	94017	94019	NO	NO	NO	NO	NO	NO	OBS.
			22-26	94018	94020	NO	NO	NO	NO	NO	NO	OBS.
			28-32	93259	94021	NO	NO	NO	NO	NO	NO	OBS.
		.0065/0.165	18-20	48052	48233	YES	YES	NO	NO	NO	YES*	
			22-26	48051	48236	YES	YES	NO	NO	NO	YES	
			28-32	48050	48239	YES	YES	NO	NO	NO	YES	

* LOOSE PIECE NOT AVAILABLE

mat'l code	SEE TABLE	surface	tolerance	projection	product family
tr	ecr no	dr	date	tolerances unless otherwise specified	title
AG		angles	linear	INCH/MM	MINI PV™ RECEPTACLE CRIMP TO WIRE
		dr	T. BREWBAKER	2006-04-18	scale 1:1
		engr	T. BREWBAKER	2006-04-18	FCJ
		chr	T. BREWBAKER	2006-04-18	dwg no 47212 sheet 3 of 6 size A3
		appd	T. BREWBAKER	2006-04-18	type Product Customer Drawing
sheet index	revision sheet				

MATERIAL & PLATING		SPRING THICKNESS DIM H±.0005/0.012	AWG RANGE	REELED NOTE 4	LOOSE NOTE 4	PLATING AVAILABILITY							
1/4 HARD BRASS BODY	Be/Cu SPRING					-000	-000LF	-001	-001LF	-002	-002LF		
UNDERPLATING: 50µ"/1.27µ Ni CONTACT AREA: 40µ"/1.02µ Au INSIDE BOX AREA: -000 Au FLASH -001LF 40µ"/1.02µ Au -002LF 30µ"/0.76µ Au REMAINDER: -000 Au FLASH -001LF 40µ"/1.02µ Au -002LF 15µ"/0.38µ Au	Au FLASH	.0035/0.089	18-20	48276	N/A	NO	NO	NO	NO	NO	NO	OBS.	
			22-26	47457	47743	YES	YES	NO	YES	NO	YES	OBS.	
			28-32	47456	47742	YES	YES	NO	YES	NO	YES	OBS.	
		.0048/0.122	18-20	47441	47713	YES	YES	NO	YES	NO	YES	OBS.	
			22-26	47439	47712	YES	YES	NO	YES	NO	YES	OBS.	
			28-32	47437	47711	YES	YES	NO	YES	NO	YES	OBS.	
		.0058/0.147	18-20	94022	94025	NO	NO	NO	NO	NO	NO	OBS.	
			22-26	94023	94026	NO	NO	NO	NO	NO	NO	OBS.	
			28-32	94024	94027	NO	NO	NO	NO	NO	NO	OBS.	
		.0065/0.165	18-20	47566	47746	YES	YES	NO	YES	NO	YES	OBS.	
			22-26	47565	47745	YES	YES	NO	YES	NO	YES	OBS.	
			28-32	47564	47744	YES	YES	NO	YES	NO	YES	OBS.	
DISCONTINUED				48191	48194								
DISCONTINUED				48192	48195								
DISCONTINUED				48193	48196								
UNDERPLATING: 50µ"/1.27µ Ni CONTACT AREA: 75µ"/1.91µ Au INSIDE BOX AREA: -000 Au FLASH -001LF 75µ"/1.91µ Au -002LF 30µ"/0.76µ Au REMAINDER: -000 Au FLASH -001LF 75µ"/1.91µ Au -002LF 15µ"/0.38µ Au	Au FLASH	.0035/0.089	18-20	47785	48014	YES	YES	NO	NO	NO	NO	OBS.	
			22-26	47784	48015	NO	NO	NO	NO	NO	NO	NO	OBS.
			28-32	47783	48013	NO	NO	NO	YES	NO	NO	OBS.	
		.0048/0.122	18-20	47220	47707	NO	NO	NO	NO	NO	NO	OBS.	
			22-26	47216	47706	YES	YES	NO	YES	NO	NO	OBS.	
			28-32	47212	47705	YES	YES	NO	YES	NO	NO	OBS.	
		.0058/0.147	18-20	94028	94031	NO	NO	NO	NO	NO	NO	OBS.	
			22-26	94029	94032	NO	NO	NO	NO	NO	NO	OBS.	
			28-32	94030	94033	NO	NO	NO	NO	NO	NO	OBS.	

mat'l code	surface	tolerance	projection	product family
SEE TABLE	✓			PV TERMINALS
tr ecn no dr date	tolerances unless otherwise specified	angles	linear	INCH/MM
AG	linear	xxx±.01/xx±.3	scale 1:1	title
	dr T. BREWBAKER 2006-04-18	xxxx.005/xx±.13		MINI PV™ RECEPTACLE
	engr T. BREWBAKER 2006-04-18	xxxx-0020/xxxx001		CRIMP TO WIRE
	chr T. BREWBAKER 2006-04-18			dwg no 47212 sheet 4 of 6 size A3
	appd T. BREWBAKER 2006-04-18			type Product Customer Drawing
sheet index	revision sheet			

PDM: Rev:AG STATUS:Released Printed: Mar 30, 2007

MATERIAL & PLATING		SPRING THICKNESS DIM H±.0005/0.012	AWG RANGE	REELED NOTE 4	LOOSE NOTE 4	PLATING AVAILABILITY								
1/4 HARD BRASS BODY	Be/Cu SPRING					-000	-000LF	-001	-001LF	-002	-002LF			
PRE-PLATED: UNDERPLATING: 50µ"/1.27µ" Ni OVERPLATING: 100-200µ"/2.54-5.08µ" 60/40 TIN LEAD "LF NOT AVAILABLE" SEE LEAD-FREE EQUIVALENTS BELOW	Sn PLATED	.0035/0.089	22-26	47445	47747	NO	NO	NO	NO	NO	NO	OBS.		
			28-32	47446	47748	NO	NO	NO	NO	NO	NO	NO	OBS.	
		.0048/0.122	18-20	47221	47716	NO	NO	NO	NO	NO	NO	NO	OBS.	
			22-26	47217	47715	NO	NO	NO	NO	NO	NO	NO	OBS.	
		.0058/0.147	18-20	94034	94037	NO	NO	NO	NO	NO	NO	NO	OBS.	
			22-26	94035	94038	NO	NO	NO	NO	NO	NO	NO	OBS.	
		.0065/0.165	18-20	47648	47749	NO	NO	NO	NO	NO	NO	NO	OBS.	
			22-26	47649	47750	NO	NO	NO	NO	NO	NO	NO	OBS.	
		.0035/0.089	Sn PLATED	.0035/0.089	22-26	47445	47747	NO	YES	NO	NO	NO	NO	OBS.
					28-32	47446	47748	NO	YES	NO	NO	NO	NO	OBS.
		.0048/0.122	Sn PLATED	.0048/0.122	18-20	47221	47716	NO	YES	NO	NO	NO	NO	OBS.
					22-26	47217	47715	NO	YES	NO	NO	NO	NO	OBS.
.0058/0.147	Sn PLATED	.0058/0.147	18-20	94034	94037	NO	NO	NO	NO	NO	NO	OBS.		
			22-26	94035	94038	NO	NO	NO	NO	NO	NO	OBS.		
.0065/0.165	Sn PLATED	.0065/0.165	18-20	47648	47749	NO	YES	NO	NO	NO	NO	OBS.		
			22-26	47649	47750	NO	YES	NO	NO	NO	NO	OBS.		
.0035/0.089	Sn PLATED	.0035/0.089	22-26	47445	47747	NO	YES	NO	NO	NO	NO	OBS.		
			28-32	47446	47748	NO	YES	NO	NO	NO	NO	OBS.		



Copyright FCJ

mat'l code	SEE TABLE	surface	tolerance	projection	product family
tr	ecn no	dr	date	tolerances unless otherwise specified	title
AG		angles	linear	INCH/MM	MINI PV™ RECEPTACLE CRIMP TO WIRE
		dr	T. BREWBAKER	2006-04-18	scale 1:1
		engr	T. BREWBAKER	2006-04-18	FCJ
		chr	T. BREWBAKER	2006-04-18	dwg no 47212 sheet 5 of 6 size A3
		appd	T. BREWBAKER	2006-04-18	type Product Customer Drawing
sheet index	revision sheet				

MATERIAL & PLATING		SPRING THICKNESS DIM H±.0005/0.012	AWG RANGE	REELED NOTE 4	LOOSE-PIECE NOTE 4		
1/4 HARD BRASS BODY	Be/Cu SPRING						
UNDERPLATING: 50u"X1.27u Ni CONTACT AREA: 30u"/0.76u CXT INSIDE BOX AREA: -600 Au FLASH REMAINDER: -600 Au FLASH	CONTINUED	.0035/0.089	18-20	48231-600	48266-600	OBS.	
			22-26	48049-600	48235-600	OBS.	
			28-32	48048-600	48238-600	OBS.	
		Au FLASH	.0048/0.122	18-20	48047-600	48232-600	OBS.
				22-26	48046-600	48234-600	OBS.
				28-32	48045-600	48237-600	OBS.
			.0058/0.147	18-20	94017-600	94019-600	OBS.
				22-26	94018-600	94020-600	OBS.
				28-32	93259-600	94021-600	OBS.
			.0065/0.165	18-20	48052-600	48233-600	OBS.
				22-26	48051-600	48236-600	OBS.
				28-32	48050-600	48239-600	OBS.



Copyright FCJ

mat'l code	SEE TABLE	surface	tolerance	projection	product family
lir	ecrn no	dr	date	tolerances unless otherwise specified	title
AG		angles	linear	INCH/MM	MINI PV™ RECEPTACLE CRIMP TO WIRE
				scale 1:1	sheet 6 of 6 size
		dr	T. BREWBAKER	2006-04-18	47212
		engr	T. BREWBAKER	2006-04-18	A3
		chr	T. BREWBAKER	2006-04-18	
		appd	T. BREWBAKER	2006-04-18	
sheet index	revision sheet				type Product Customer Drawing

PDM: Rev:AG STATUS:Released Printed: Mar 30, 2007