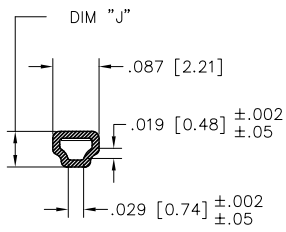
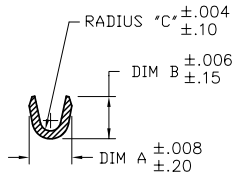


PRODUCT NUMBER
SEE TABLE

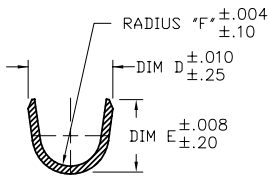
SIDES OF SPRING MAY NOT
EXTEND BEYOND SIDE OF
TERMINAL MORE THAN .004/.10



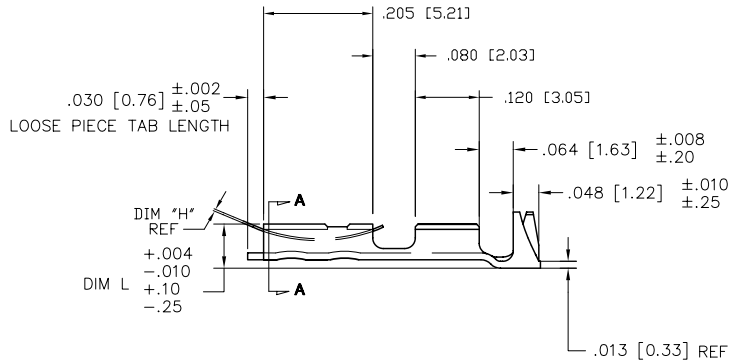
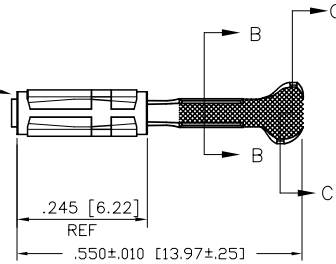
SECTION A-A



SECTION B-B
(N.T.S.)



SECTION C-C
(N.T.S.)



mat'l code		SEE TABLE		surface	tolerance	projection	product family
l/r	ec'n no	dr	date	tolerances unless otherwise specified		INCH/MM scale 4:1	PV TERMINALS
AA	v08-0113	HTB	2008-03-28	angles	linear		
AB	v08-0510	HTB	2008-12-02				MAXI PV™ RECEPTACLE CRIMP TO WIRE
V	v05-0468	HTB	2005-05-27	dr	T. BREWBAKER	2006-04-18	dwg no
W	v06-0218	HTB	2006-03-07	engr	T. BREWBAKER	2006-04-18	sheet 1 of 3
X	v06-0303	HTB	2006-04-18	chr	T. BREWBAKER	2006-04-18	size
Y	v07-0218	HTB	2007-03-16	appd	T. BREWBAKER	2006-04-18	A3
sheet index	revision	AB	AB	AB			46220
	sheet	1	2	3			type
							Product Customer Drawing

PDM: Rev:AB

STATUS: Released

Printed: Apr 01, 2009

PRODUCT NUMBER			AWG RANGE	MATERIAL AND PLATING		SPRING THICKNESS		BODY			
REEL	LOOSE PC.			BODY : 1/4 HD BRASS	SPRING : BE-CU HEAT TREATED	DIM H		DIM J		DIM L	
						ENGLISH	METRIC	ENGLISH	METRIC	ENGLISH	METRIC
46220-000	46224-000	18-20	OBS.								
46230-000	46234-000	22-26	OBS.	OBSOLETE		OBSOLETE					
46240-000	46244-000	28-32	OBS.	OBSOLETE		OBSOLETE					
46221-000LF	46225-000LF	18-20		40µ"/1.02µm MIN GOLD OVER		0.0058	0.147	0.067	1.70	0.083	2.11
46231-000LF	46235-000LF	22-26		50µ"/1.27µm MIN NICKLE IN		0.0058	0.147	0.067	1.70	0.083	2.11
46241-000	46245-000	28-32	OBS.	OBS. CONTACT AREA (NOTE 4)		OBSOLETE					
46222-000LF	47418-000LF	18-20		75µ"/1.91µm MIN GOLD OVER		0.0075	0.191	0.067	1.70	0.083	2.11
46232-000LF	47419-000LF	22-26		50µ"/1.27µm MIN NICKLE IN		0.0075	0.191	0.067	1.70	0.083	2.11
46242-000	47420-000	28-32	OBS.	OBS. CONTACT AREA (NOTE 4)		OBSOLETE					
46223-000LF	47387-000LF	18-20		40µ"/1.02µm MIN GOLD OVER		0.0075	0.191	0.067	1.70	0.083	2.11
46233-000LF	47384-000LF	22-26		50µ"/1.27µm MIN NICKLE IN		0.0075	0.191	0.067	1.70	0.083	2.11
46243-000	47403-000	28-32	OBS.	OBS. CONTACT AREA (NOTE 4)		OBSOLETE					
46226-000LF	46227-000LF	18-20		40µ"/1.02µm MIN GOLD OVER		0.0048	0.122	0.067	1.70	0.083	2.11
46236-000LF	46237-000LF	22-26		50µ"/1.27µm MIN NICKLE IN		0.0048	0.122	0.067	1.70	0.083	2.11
46246-000	46247-000	28-32	OBS.	OBS. CONTACT AREA (NOTE 4)		OBSOLETE					
46228-000	46229-000	18-20	OBS.	OBSOLETE		OBSOLETE					
46238-000	46239-000	22-26	OBS.	OBSOLETE		OBSOLETE					
46248-000	46249-000	28-32	OBS.	OBSOLETE		OBSOLETE					
46580-000	46581-000	18-20	OBS.	OBSOLETE		OBSOLETE					
46590-000	46591-000	22-26	OBS.	OBSOLETE		OBSOLETE					
46600-000	46601-000	28-32	OBS.	OBSOLETE		OBSOLETE					
47388-000	47391-000	18-20	OBS.	OBSOLETE		OBSOLETE					
47389-000	47392-000	22-26	OBS.	OBSOLETE		OBSOLETE					
47390-000	47393-000	28-32	OBS.	OBSOLETE		OBSOLETE					
47612-000			OBS.	OBSOLETE		OBSOLETE					
47613-000			OBS.	OBSOLETE		OBSOLETE					
47614-000			OBS.	OBSOLETE		OBSOLETE					
47621-000			OBS.	OBSOLETE		OBSOLETE					
47622-000			OBS.	OBSOLETE		OBSOLETE					
47653-000			OBS.	OBSOLETE		OBSOLETE					
47733-000			OBS.	OBSOLETE		OBSOLETE					
47734-000			OBS.	OBSOLETE		OBSOLETE					
47735-000			OBS.	OBSOLETE		OBSOLETE					
47736-000	46582-000	18-20	OBS.	OBSOLETE		OBSOLETE					
47737-000	46592-000	22-26	OBS.	OBSOLETE		OBSOLETE					
47738-000	46602-000	28-32	OBS.	OBSOLETE		OBSOLETE					
48188-000	48189-000	22-26	OBS.	OBSOLETE		OBSOLETE					

SEE SHEET 3 FOR PRODUCTS WITH LEAD-FREE TIN PLATING.

mat'l code	SEE TABLE	surface	tolerance	projection	product family
tr	ecn no	dr	date	tolerances unless otherwise specified	title
AB				angles	linear
				linear	linear
				dr	T. BREWBAKER 2006-04-18
				engr	T. BREWBAKER 2006-04-18
				chr	T. BREWBAKER 2006-04-18
				appd	T. BREWBAKER 2006-04-18
sheet index	revision sheet				

INCH/MM	scale 1:1	product family	PV TERMINALS
		title	MAXI PV™ RECEPTACLE CRIMP TO WIRE
		dwg no	46220
		sheet 2 of 3	size A3
		type	Product Customer Drawing

PRODUCT NUMBER		AWG RANGE	MATERIAL AND PLATING		SPRING THICKNESS		BODY			
REELED	LOOSE PC.				DIM H		DIM J		DIM L	
			BODY : 1/4 HD BRASS	SPRING : BE-CU HEAT TREATED	ENGLISH	METRIC	ENGLISH	METRIC	ENGLISH	METRIC
46580-000LF	46581-000LF	18-20	HOT DIPPED TIN (NOTE 7)	TIN PLATED	0.0075	0.191	0.067	1.70	0.083	2.11
46590-000LF	46591-000LF	22-26			0.0075	0.191	0.067	1.70	0.083	2.11
46600-000LF	46601-000LF	28-32			0.0075	0.191	0.067	1.70	0.083	2.11
47388-000LF	47391-000LF	18-20	HOT DIPPED TIN (NOTE 7)	TIN PLATED	0.0058	0.147	0.067	1.70	0.083	2.11
47389-000LF	47392-000LF	22-26			0.0058	0.147	0.067	1.70	0.083	2.11
47390-000LF	47393-000LF	28-32			0.0058	0.147	0.067	1.70	0.083	2.11
47736-000LF	46582-000LF	18-20	HOT DIPPED TIN (NOTE 7)	TIN PLATED	0.0048	0.122	0.067	1.70	0.083	2.11
47737-000LF	46592-000LF	22-26			0.0048	0.122	0.067	1.70	0.083	2.11
47738-000LF	46602-000LF	28-32			0.0048	0.122	0.067	1.70	0.083	2.11

AWG RANGE	WIRE BARREL						INSULATION BARREL									
	DIM A		DIM B		DIM C		INSULATION DIA. RANGE FOR DISCRETE TERMINALS		INSULATION DIA. RANGE WHEN USED WITH MAXI LATCH HSG.		DIM D		DIM E		DIM F	
	ENGLISH	METRIC	ENGLISH	METRIC	ENGLISH	METRIC	ENGLISH	METRIC	ENGLISH	METRIC	ENGLISH	METRIC	ENGLISH	METRIC	ENGLISH	METRIC
18-20	0.110	2.79	0.110	2.79	0.021	0.53	0.042 - 0.103	1.07 - 2.62	0.042 - 0.060	1.07 - 1.52	0.139	3.53	0.123	3.12	0.050	1.27
22-26	0.070	1.78	0.070	1.78	0.017	0.43	0.036 - 0.103	0.91 - 2.62	0.036 - 0.060	0.91 - 1.52	0.139	3.53	0.123	3.12	0.050	1.27
28-30	0.054	1.37	0.058	1.47	0.011	0.28	0.028 - 0.054	0.71 - 1.37	0.028 - 0.054	0.71 - 1.37	0.115	2.92	0.110	2.79	0.040	1.02

NOTES:

- FOR DIMENSIONS OF WIRE BARREL AND INSULATION BARREL SEE TABLE.
- PART TO MATE WITH .025±.002 [0.64±0.05] SQ. PIN.
- APPLICABLE SPECIFICATIONS:
 - BUS-12-096 : PRODUCT SPECIFICATION
 - TA-213 : CRIMP SPECIFICATION FOR TERMINALS USED WITH MAXI-LATCH HOUSINGS.
 - TA-356 : CRIMP SPECIFICATION FOR CONTACTS NOT USED IN HOUSINGS.
- FINISH TO BE AS SPECIFIED IN CONTACT AREA. REMAINDER OF TOP OF PART TO BE GOLD FLASH OVER 50µ"/1.27µm NICKEL. BACKSIDE OF TERMINALS PLATED WITH 30µ"/0.76µm NICKEL ONLY.
- PRODUCT MEETS EUROPEAN UNION DIRECTIVES AND OTHER COUNTRY REGULATIONS AS DESCRIBED IN GS-22-008.
- THIS PRODUCT IS NOT INTENDED TO BE EXPOSED TO MANUFACTURING SOLDER PROCESSES.
- THIS PRODUCT HAS 100% TIN PLATING IN THE INTERFACE AND HAS NOT BEEN TESTED FOR WHISKER GROWTH IN ALL INTERCONNECT ENVIRONMENTS.

mat'l. code	surface	tolerance	projection	product family
SEE TABLE	✓			PV TERMINALS
tr. ecn no. dr. date	tolerances unless otherwise specified	angles	linear	title
AB	xxx±.01/xx±.3 xxxx.005/xxx.13 xxxx.000/xxx.001		INCH/MM	MAXI PV™ RECEPTACLE CRIMP TO WIRE
	dr. T. BREWBAKER 2006-04-18		scale 1:1	dwg no. sheet 3 of 3 size
	engr. T. BREWBAKER 2006-04-18			46220 A3
	chr. T. BREWBAKER 2006-04-18			type Product Customer Drawing
	app'd. T. BREWBAKER 2006-04-18			
sheet index	revision sheet			