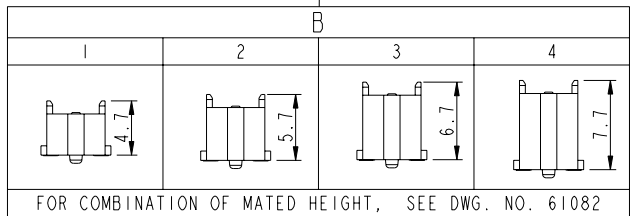


1 2 3 4

61083- AA B C D E FF

AA	NO. OF POSITIONS
04	2X20
06	2X30
08	2X40
10	2X50
12	2X60
14	2X70
16	2X80
18	2X90
20	2X100



E	PACKAGING
0	TUBE WITHOUT METAL CAP
2	T&R WITH METAL CAP
9	TUBE WITH METAL CAP
6	T&R WITHOUT METAL CAP (WITH KAPTON TAPE)

D	POLARIZATION PEG	HOLD DOWN
0	YES	NO
2	NO	NO

NOTE:

1. MATERIAL:  
HOUSING: G.F. LCP, UL94-V0  
TERMINAL: BRASS
2. PLATING:  
AS SHOWN IN TABLE.
3. SEE GS-12-547 FOR PRODUCT SPEC.
4. SEE GS-14-551 AND GS-14-816 FOR PACKAGING SPEC.
5. PACKAGING OPTION 2: NOT ALL SIZES ARE AVAILABLE. CHECK WITH FACTORY.
6. THIS PRODUCT MEETS THE EUROPEAN UNION DIRECTIVES AND OTHER COUNTRY REGULATIONS AS DESCRIBED IN GS-22-008.
7. THE HOUSING WILL WITHSTAND EXPOSURE UP TO 260° PEAK TEMPERATURE FOR 30 SECONDS IN A CONVECTION, INFRA-RED OR VAPOR PHASE REFLOW OVEN.
8. PLATING OPTION "4" IS LEADFREE ALTERNATIVE FOR OPTION "0", AND OPTION "6" IS LEADFREE ALTERNATIVE FOR OPTION "1".
9. HIGH PRECISION COPLANARITY IS AVAILABLE FOR 2X80 TO 2X100 POS, ALL HEIGHTS. PLS REFER TO PRINT 10069525.
10. A SYMBOL WILL BE NEXT TO ANY DIMENSION, VIEW OR NOTE WHICH HAS BEEN MODIFIED WITH THE CURRENT DRAWING REVISION.

C	PLATING	FF
0	GOLD 0.2um MIN. / TIN LEAD SOLDER TAIL NICKEL UNDERPLATE OVERALL 1.27um MIN	NONE
1	GOLD FLASH (0.1um MIN) OVER PALLADIUM-NICKEL 0.76um MIN /TIN LEAD SOLDER NICKEL UNDERPLATE OVERALL 1.27um.	NONE
4	GOLD 0.2um MIN / PURE MATT TIN SOLDER TAIL NICKEL UNDERPLATE OVERALL 1.27um. (LEADFREE PLATING)	LF (NOTE 6 & 8)
5	GOLD 0.38um MIN /PURE MATT TIN SOLDER TAIL NICKEL UNDERPLATE OVERALL 1.27UM MIN (LEADFREE PLATING)	LF (NOTE 6)
6	GOLD FLASH (0.1um MIN) OVER PALLADIUM-NICKEL 0.76um MIN / PURE MATT TIN SOLDER TAIL NICKEL UNDERPLATE OVERALL 1.27um. (LEADFREE PLATING)	LF (NOTE 6 & 8)

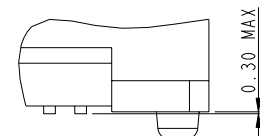
spec ref	dr	MAGGIE WU	1999-03-24	projection	mm	size	A3	scale	3:1
tolerance std	eng	YU WEN CHU	1999-03-24	chr	M CHEONG	2010-09-29	ecn no	S10-0210	
ISO 406	chr	M CHEONG	2010-09-29	appr	JOEY NG	2010-09-29	product family	BERGSTAK	rel level
ISO 1101	ISO 1302	linear	0.X ±0.2	0.XX ±0.15	0.XXX ±0.10	angular	0° ±2°	www.fci.com	cat. no.
				FCI		title		BERGSTAK 0.8mm BTB	
				PLUG ASSY		dwg no		61083	
				rev		AC		sheet 1 of 6	

Print File - REV C - 2010-05-09

1 2 3 4 PDM: Rev:AC STATUS:Released Printed: Nov 03, 2010

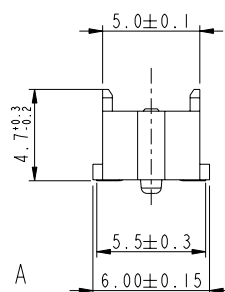
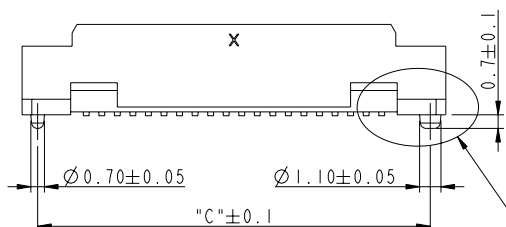
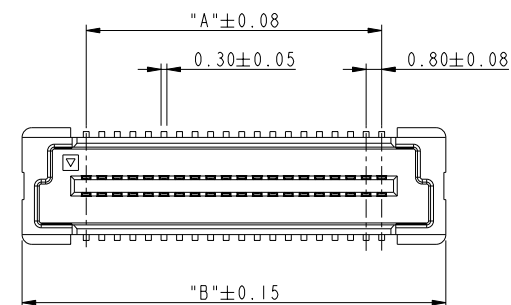
Copyright FCI.

PRODUCT NO.	NO. OF POSITION	DIMENSION		
		A	B	C
61083-04 ***	2X20	15.2	21.8	20.2
61083-06 ***	2X30	23.2	29.8	28.2
61083-08 ***	2X40	31.2	37.8	36.2
61083-10 ***	2X50	39.2	45.8	44.2
61083-12 ***	2X60	47.2	53.8	52.2
61083-14 ***	2X70	55.2	61.8	60.2
61083-16 ***	2X80	63.2	69.8	68.2
61083-18 ***	2X90	71.2	77.8	76.2
61083-20 ***	2X100	79.2	85.8	84.2






COPLANARITY OF TAIL:  
0.1 MAX. APPLIED TO 2X20 TO 2X100 POS

DETAIL A  
SCALE 10:1



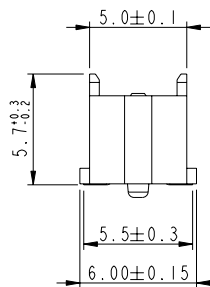
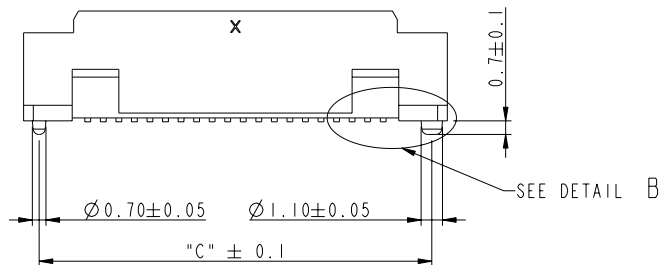
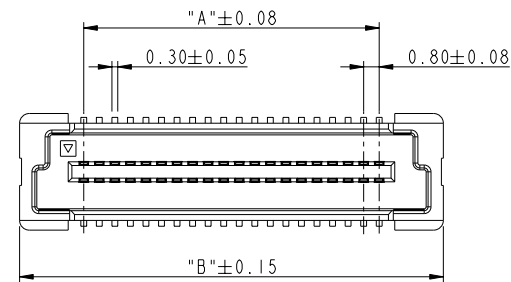
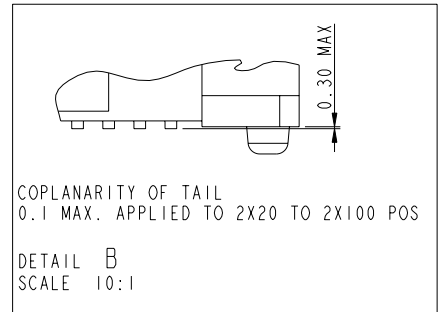
PLUG I

spec ref		dr		MAGGIE WU	1999-03-24	projection		mm		size		A3	scale		3:1		
tolerance std		eng		YU WEN CHU	1999-03-24					ecn no		S10-0210					
ISO 406		chr		M CHEONG	2010-09-29					product family		BERGSTAK		rel level		RELEASE	
ISO 1101		appr		JOEY NG	2010-09-29												
surface		linear				title		BERGSTAK 0.8mm BTB PLUG ASSY		deg no		61083		rev		AC	
ISO 1302		angular		0°		±2°		www.fci.com		cat. no.				CUSTOMER		sheet 2 of 6	



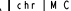
Prod File - REV C - 2010-10-09

PDM: Rev:AC STATUS:Released Printed: Nov 03, 2010

PRODUCT NO.	NO. OF POSITION	DIMENSION		
		A	B	C
61083-042***	2X20	15.2	21.8	20.2
61083-062***	2X30	23.2	29.8	28.2
61083-082***	2X40	31.2	37.8	36.2
61083-102***	2X50	39.2	45.8	44.2
61083-122***	2X60	47.2	53.8	52.2
61083-142***	2X70	55.2	61.8	60.2
61083-162***	2X80	63.2	69.8	68.2
61083-182***	2X90	71.2	77.8	76.2
61083-202***	2X100	79.2	85.8	84.2



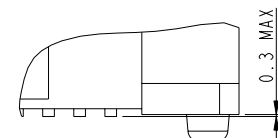
PLUG 2

spec ref		dr		MAGGIE WU		1999-03-24		projection		mm		size		A3		scale			
tolerance std		eng		YU WEN CHU		1999-03-24						ecn no		S10-0210		rel level		RELEASE	
ISO 406		chr		M CHEONG		2010-09-29													
ISO 1101		appr		JOEY NG		2010-09-29													
TOLERANCES UNLESS OTHERWISE SPECIFIED				product family		BERGSTAK													
surface		linear				title						61083		rev					
						BERGSTAK 0.8mm BTB													
						PLUG ASSY													
		ISO 1302		angular		0°		±2°		www.fci.com		cat. no.		-		CUSTOMER		sheet 3 of 6	

Print File - REV C - 2010-09-09

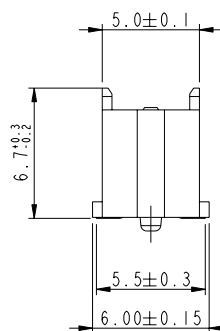
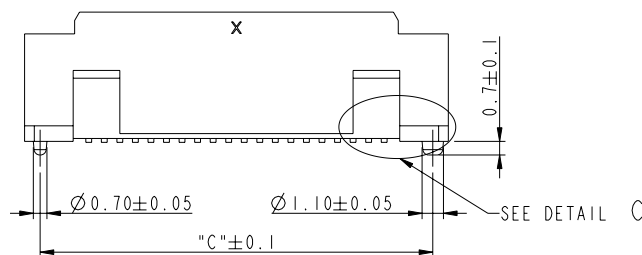
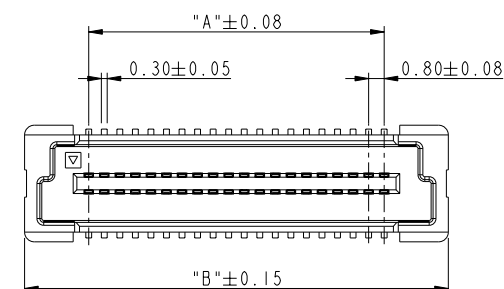
PDM: Rev:AC STATUS:Released Printed: Nov 03, 2010

PRODUCT NO.	NO. OF POSITION	DIMENSION		
		A	B	C
61083-043***	2X20	15.2	21.8	20.2
61083-063***	2X30	23.2	29.8	28.2
61083-083***	2X40	31.2	37.8	36.2
61083-103***	2X50	39.2	45.8	44.2
61083-123***	2X60	47.2	53.8	52.2
61083-143***	2X70	55.2	61.8	60.2
61083-163***	2X80	63.2	69.8	68.2
61083-183***	2X90	71.2	77.8	76.2
61083-203***	2X100	79.2	85.8	84.2




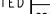


COPLANARITY OF TAIL:  
0.1 MAX. APPLIED TO 2X20 TO 2X100 POS

DETAIL C  
SCALE 10:1



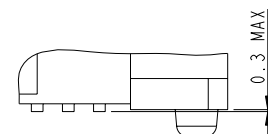
PLUG 3

spec ref		dr		MAGGIE WU	1999-03-24	projection				mm		size		A3	scale		3:1
tolerance std		eng		YU WEN CHU	1999-03-24							ecn no		S10-0210			
ISO 406		chr		M CHEONG	2010-09-29							rel level		RELEASE			
ISO 1101		appr		JOEY NG	2010-09-29	product family		BERGSTAK		-							
<div>surface</div> <div>✓</div>		<div>linear</div>				BERGSTAK 0.8mm BTB						61083		rev		AC	
ISO 1302		angular		0°		±2°		www.fci.com		cat. no.		-		CUSTOMER		sheet 4 of 6	
TOLERANCES UNLESS OTHERWISE SPECIFIED				0.X		±0.2											
				0.XX		±0.15											
				0.XXX		±0.10											

Prod File - REV C - 2010-10-09

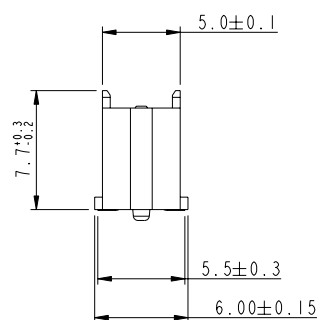
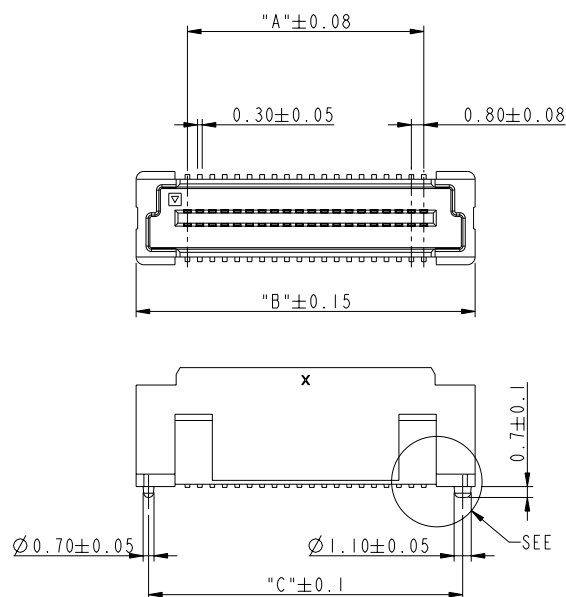
PDM: Rev:AC STATUS:Released Printed: Nov 03, 2010

PRODUCT NO.	NO. OF POSITION	DIMENSION		
		A	B	C
61083-042***	2X20	15.2	21.8	20.2
61083-062***	2X30	23.2	29.8	28.2
61083-082***	2X40	31.2	37.8	36.2
61083-102***	2X50	39.2	45.8	44.2
61083-122***	2X60	47.2	53.8	52.2
61083-142***	2X70	55.2	61.8	60.2
61083-162***	2X80	63.2	69.8	68.2
61083-182***	2X90	71.2	77.8	76.2
61083-202***	2X100	79.2	85.8	84.2







COPLANARITY OF TAIL:  
0.1 MAX. APPLIED TO 2X20 TO 2X100 POS

DETAIL D  
SCALE 10:1



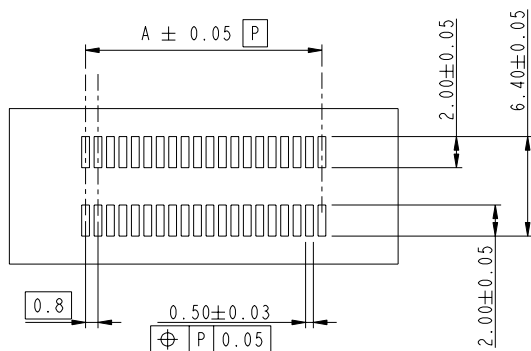
PLUG 4

spec ref		dr MAGGIE WU		1999-03-24		projection		mm		size A3		scale 3:1					
tolerance std		eng YU WEN CHU		1999-03-24						ecm no		S10-0210					
ISO 406		chr M CHEONG		2010-09-29													
ISO 1101		appr JOEY NG		2010-09-29													
TOLERANCES UNLESS OTHERWISE SPECIFIED				product family		BERGSTAK		-		rel level		RELEASE					
 surface ISO 1302		linear		0.X ±0.2				title		BERGSTAK 0.8mm BTB		deg no		61083		rev	
		0.XX ±0.15															
		0.XXX ±0.10															
angular		0° ±2°		www.fci.com		cat. no.		-		CUSTOMER		sheet 5 of 6					

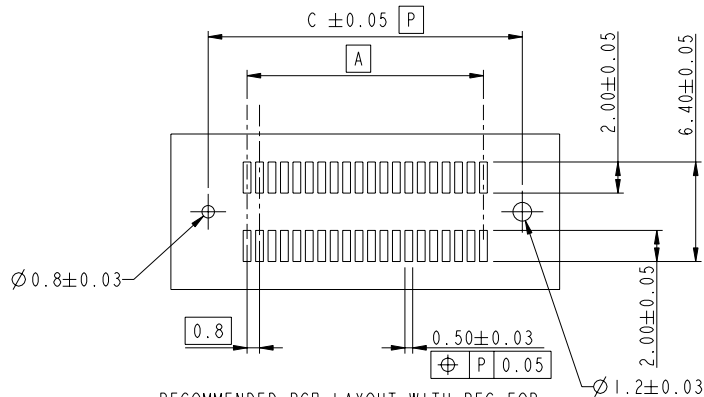
Printed: Nov 03, 2010

Printed: Nov 03, 2010

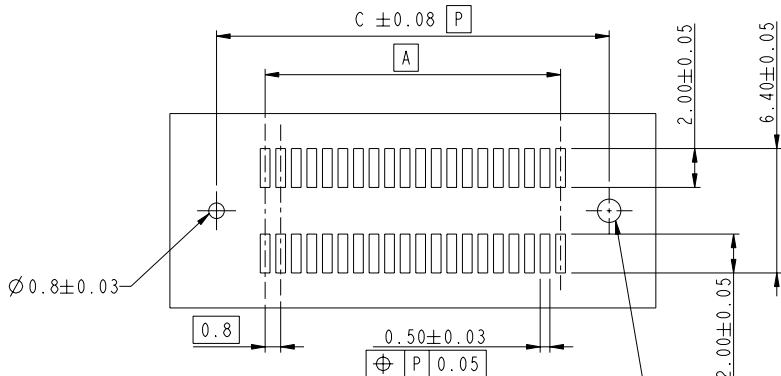
FOR PLUG 1/2/3/4



RECOMMENDED PCB LAYOUT WITHOUT PEG AND HOLDDOWN FOR  
NO. OF POS 2X20, 2X30, 2X40, 2X50 2X60



RECOMMENDED PCB LAYOUT WITH PEG FOR  
NO. OF POS 2X20, 2X30, 2X40, 2X50 2X60



RECOMMENDED PCB LAYOUT WITH PEG FOR  
NO. OF POS 2X70, 2X80, 2X90, 2X100

spec ref		dr		MAGGIE WU	1999-03-24	projection		mm		size		A3		scale	
tolerance std		TOLERANCES UNLESS OTHERWISE SPECIFIED				eng		YU WEN CHU		1999-03-24		ecp no		SIO-0210	
ISO 406						chr		M CHEONG		2010-09-29					
ISO 1101						appr		JOEY NG		2010-09-29		product family		BERGSTAK	
												rel level		RELEASE	
surface		linear		0.X	±0.2	FCI						61083		rev	
				0.XX	±0.15	TITLE								AC	
				0.XXX	±0.10	BERGSTAK 0.8mm BTB									
ISO 1302		angular		0°	±2°	PLUG ASSY									
		www.fci.com				cat. no.		-		CUSTOMER		sheet 6 of 6			

Printed: Nov 03, 2010

PDM: Rev:AC STATUS:Released Printed: Nov 03, 2010