



Introducing Corcom DB Series

 **Tyco Electronics**
Our commitment. Your advantage.

Corcom DB Series

KEY FEATURES

- Compact connector for high-current DC applications
- Reliable performance in a compact assembly
- 60A DC current rating
- Polarized mating scheme
- Easy customer termination of power source
- Plug and receptacle available preterminated with standard wire lengths

WARNING : This is not approved for hot swap or current interruption in DC applications. Doing so will result in irreparable damage to contact.

APPLICATIONS

Tyco Electronics has expanded the Corcom product line with a new power inlet filter. Available in four levels of filtering and an unfiltered version, these inlets are designed to accept up to 60 amps of current at 150 volts DC (UL/CSA) and 120 volts DC (TUV) in the filtered versions and 300 volts AC or DC in the unfiltered version. Filtered versions include the basic clean-up DBJ style through the higher performing DB style and DBX style which provides up to 68dB insertion loss within the 150kHz to 30Mhz frequency range. The DBF style uses feedthrough capacitors for improved high-frequency performance.

Power input terminals are Tyco Electronics' #4 AWG Elcon "drawer style" contacts. The filters' load sides come prewired with #6 AWG hi-flex stranded wire. The unfiltered plugs and receptacles are available with pre-terminated, hi-flex wire of various lengths.

APPLICATIONS

Telecom equipment, Automotive equipment, Data communications, Power distribution panels

STANDARD AND SPECS

RFI Filter - UL1283 Recognized
- CSA Certified C22.2 No.8/TUV Certified EN60950-1 (Filter)

Connector System - UL1977 Recognized/CSA 182.3 Certified (through UL)
- TUV Certified EN61984

APPLICATION TOOLING (UNTERMINATED CONTACTS ONLY)

Insertion/Extraction tool recommended : **1643922-1** (for DBR/DBP only)

No hand tool available. Must crimp per Tyco Electronics' application spec : **114-13206**

Crimp tool : **M22520/23-01**

Indenter head : **M22520/23-04**

Locator : **M22520/23-11**

ACCESSORIES

Connector system locking kit available. (Contact Corcom)

Note : Tool required to disengage mated connector pair when using locking kit.



PRODUCT OFFERING

- 60DBR** : Connector housing, receptacle with retention clips
- 60DBP** : Connector housing, plug with retention clips
- 60DBPL1** : Mating connector plug terminated with 1 foot cable
- 60DBPL3** : Mating connector plug terminated with 3 foot cable
- 60DBPL9** : Mating connector plug terminated with 9 foot cable
- 60DBRL1** : Receptacle terminated with 1 foot cable
- 60DBRL3** : Receptacle terminated with 3 foot cable
- 60DBJ8** : Filter assembly with 6 inch wire leads
- 60DB8** : Filter assembly with conventional wire leaded capacitors
- 60DBF8** : Filter assembly with feedthrough capacitors
- 60DBX8** : High performance filter assembly

CASE DIMENSIONS

Part No.	A (max)	B (max)	C ± 0.025 ± 0.635	D ± 0.025 ± 0.635	E ± 0.025 ± 0.635	F ± 0.025 ± 0.635
60DBJ8	3.2 <i>81.28</i>	1.36 <i>34.54</i>	1.181 <i>29.997</i>	1.654 <i>42.012</i>	2.087 <i>53.010</i>	1.280 <i>32.51</i>
60DB8 60DBF8	4.06 <i>103.12</i>	3.20 <i>81.28</i>	1.45 <i>36.830</i>	2.50 <i>63.50</i>	0.875 <i>22.230</i>	2.077 <i>52.76</i>
60DBX	6.06 <i>153.92</i>	3.50 <i>88.90</i>	1.45 <i>36.830</i>	2.876 <i>73.050</i>	0.875 <i>22.230</i>	2.265 <i>57.53</i>
60DBRL	1.22* <i>30.98</i>	1.181* <i>29.99*</i>	2.087 <i>53.009</i>	1.654 <i>42.011</i>	1.023 <i>25.984</i>	0.591 <i>15.01</i>
60DBPL	1.695* <i>43.05</i>	0.93* <i>23.62*</i>	2.08 <i>52.832</i>	1.654 <i>42.011</i>	1.195 <i>30.353</i>	0.465 <i>11.81</i>

* ± 0.025
 ± 0.635

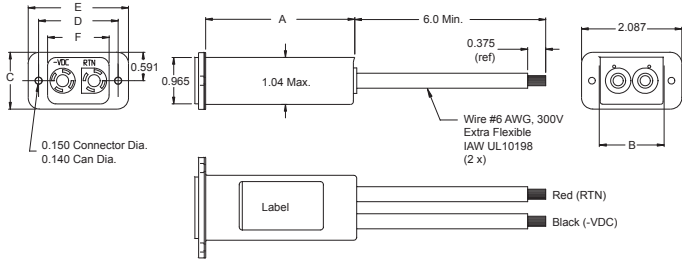
Dimensions are in inches and millimeters unless otherwise specified. Values in italics are metric equivalents. Dimensions are shown for reference purposes only. Specifications subject to change.

WARNING : This is not approved for hot swap or current interruption in DC applications. Doing so will result in irreparable damage to contact.

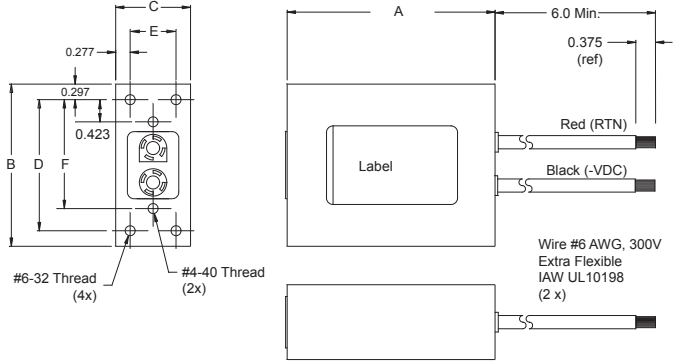


CASE DIMENSIONS CONTINUED

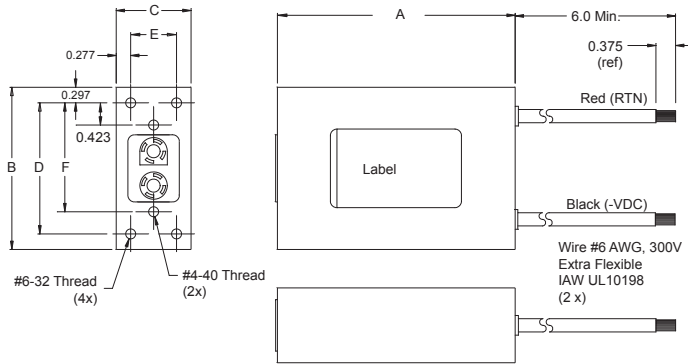
60DBJ8



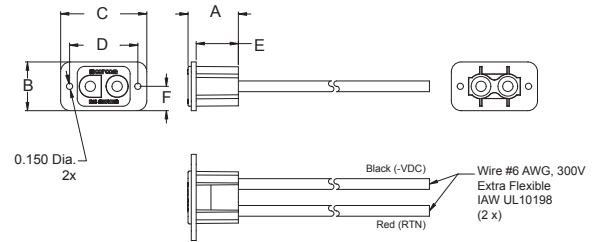
60DB8/60DBF8



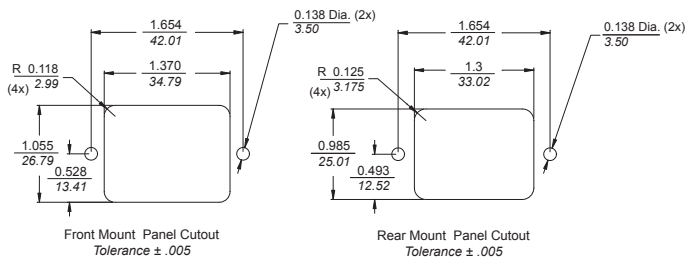
60DBX8



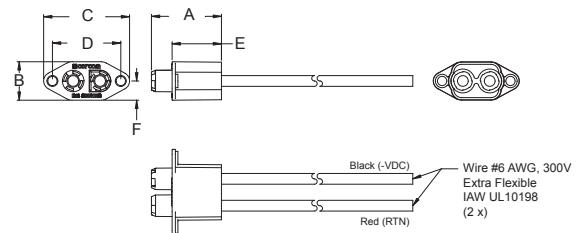
60DBRL



60DBRL/60DBJ8 Panel Cutout



60DBPL



WARNING : This is not approved for hot swap or current interruption in DC applications. Doing so will result in irreparable damage to contact.



ELECTRICAL SCHEMATICS

Line-to-ground in 50 ohm circuit (Frequency MHz)

Part Number	0.01	0.015	0.5	1	5	10	20	30	50	100
60DBJ8	-	-	-	1	13	21	30	40	30	20

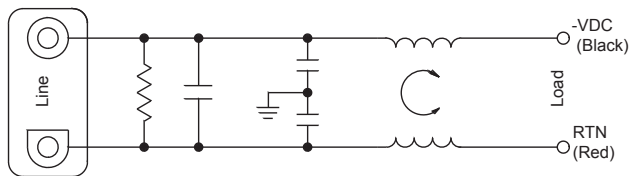
Part Number	0.05	0.1	0.15	0.5	1	3	5	10	20	30
60DB8	2	7	10	23	30	48	38	28	20	16
60DBF8	15	22	25	35	42	50	58	54	38	36
60DBX8	-	10	16	40	48	54	60	51	40	36

Line-to-line in 50 ohm circuit (Frequency MHz)

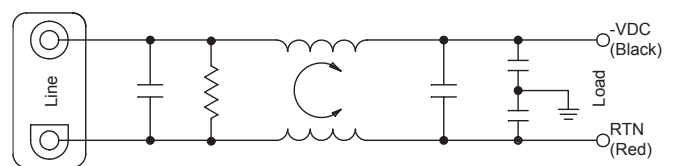
Part Number	0.05	0.1	0.15	0.5	1	3	5	10	20	30
60DBJ8	-	5	8	19	26	36	34	26	20	16

Part Number	0.05	0.1	0.15	0.5	1	3	5	10	20	30
60DB8	20	26	29	43	53	30	30	24	20	18
60DBF8	9	15	18	30	34	40	44	44	48	52
60DBX8	31	30	30	70	70	54	50	60	54	50

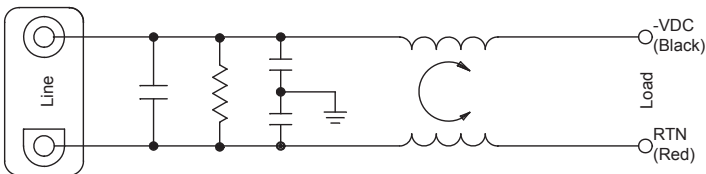
60DBJ8



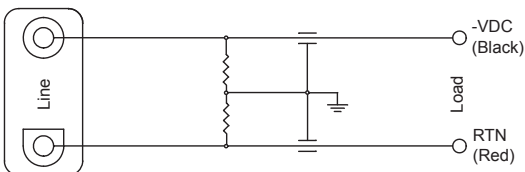
60DBX8



60DB8



60DBF8



WARNING : This is not approved for hot swap or current interruption in DC applications. Doing so will result in irreparable damage to contact.

FOR MORE INFORMATION

Technical Support

Corcom Phone	7.847.573.6597
Internet:	www.tycoelectronics.com/help www.corcom.com
E-mail:	newproducts@tycoelectronics.com
USA:	+1 (800) 522-6752
Canada:	+1 (905) 470-4425
Mexico & Central America:	+52(0) 55-1106-0814
South America:	+55 (0) 11-2103-6000
Germany:	+49 (0) 6251-133-1999
UK:	+44 (0) 8706-080208
France:	+33 (0) 1-3420-8686
Netherlands:	+31 (0) 73-6246-999
China:	+86 (0) 400-820-6015

Tyco Electronics Corporation
Harrisburg, PA

tycoelectronics.com

© 2009 Tyco Electronics Corporation. All Rights Reserved.
1773455-2 CIS PDF 10/2009

CORCOM, ELCON, TE (logo) and Tyco Electronics are trademarks of the Tyco Electronics group of companies and its licensors.

Other products, logos, and Company names mentioned herein may be trademarks of their respective owners.

While Tyco Electronics has made every reasonable effort to ensure the accuracy of the information in this catalog, Tyco Electronics does not guarantee that it is error-free, nor does Tyco Electronics make any other representation, warranty or guarantee that the information is accurate, correct, reliable or current. Tyco Electronics reserves the right to make any adjustments to the information contained herein at any time without notice. Tyco Electronics expressly disclaims all implied warranties regarding the information contained herein, including, but not limited to, any implied warranties of merchantability or fitness for a particular purpose. The dimensions in this catalog are for reference purposes only and are subject to change without notice. Specifications are subject to change without notice. Consult Tyco Electronics for the latest dimensions and design specifications.



Tyco Electronics
Our commitment. Your advantage.