

CU Series

Compact 1U Height Switched Power Entry Modules



UL Recognized
CSA Certified
VDE Approved‡



Catalog Data Sheet

CU Series

Specifications

The CU joins the Corcom family of Power Entry Modules, filling the need for smaller versions of our switched inlet filters. This series provides power entry for equipment designed for popular 1U (1 3/4") height telecom equipment racks. The filtered versions provide complete shielding, shrouded quick connect terminals and basic filtering for 1A to 15A applications, in an extremely compact size.

The modular design is available in snap-in and flanged mounting options. Filtered versions are also available in a new rear mount style which provides a flush appearance with enhanced EMI shielding. The unfiltered inlet snap-in versions are available in three different snap-in configurations to fit a wide variety of panel cut-outs, and with optional jumpering from the socket to the switch. The CU Series accepts common EN 60320 power cords for international compatibility. Refer to the C, GG, P and M Series PEMs for applications requiring additional features.

‡ 15A versions tested by Underwriters Laboratories to US and Canadian requirements and are VDE approved at 10A, 250VAC

Maximum leakage current, each line to ground †:

@ 120 VAC 60 Hz	.25 mA
@ 250 VAC 50 Hz	.40 mA
<i>† applies to Filtered versions only</i>	

Hipot rating (one minute):

line to ground	1500 VAC
line to line	1450 VDC

Operating Frequency: 50 / 60 Hz

Operating voltages: 120/250 VAC

Rated Current: 1 to 15 Amps

** refer to part number for rating*

Switch: 50A Inrush SPST

Output & Switch Terminal Push-on Force: 15 lb / 67N (max)

Minimum insertion loss in dB:

Line to ground in 50 ohm circuit

Electrical Schematic



Line

Load

Resistor location for reference only

Current Rating	Frequency - MHz						
	.05	.15	0.5	1	5	10	30
1A	19	30	44	49	47	44	45
3A	13	23	37	43	47	44	49
6A	5	14	28	34	43	43	48
10A	1	7	19	25	35	36	52
15A	-	1	10	13	25	27	42

Line to line in 50 ohm circuit

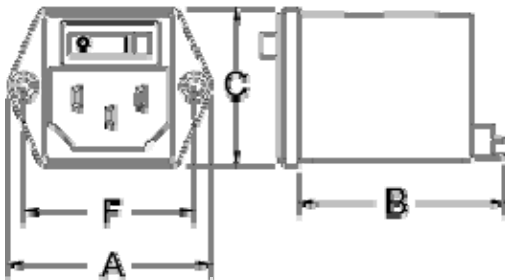
Current Rating	Frequency - MHz						
	.05	.15	0.5	1	5	10	30
1A	1	10	21	26	48	51	60
3A	1	10	20	26	42	45	65
6A	1	10	20	23	38	41	65
10A	1	10	20	23	29	34	56
15A	1	10	20	23	28	39	54

† Applies to Filtered Models only

Case Styles

Case Styles

CUFE1



Typical Dimensions	
Mounting Holes (2)	.132 Dia
	3.35

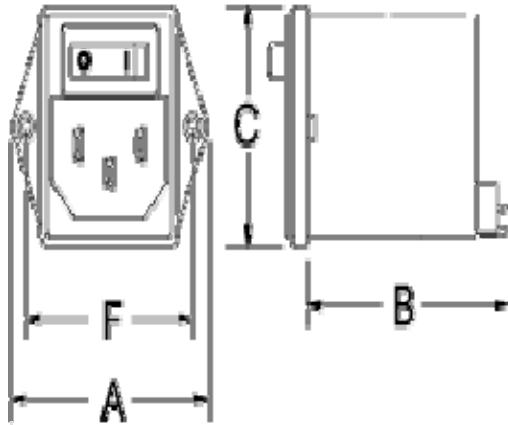
CUBE1 Pre-Connected Terminals



CUBS1 Pre-Connected Terminals

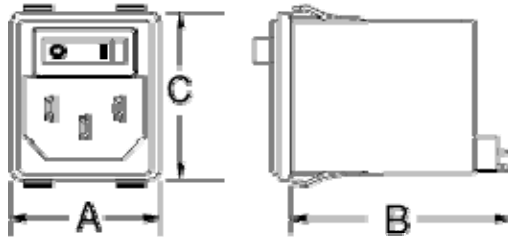
with .260 x 90° countersink
for #4 Flathead Screw

CUFF1



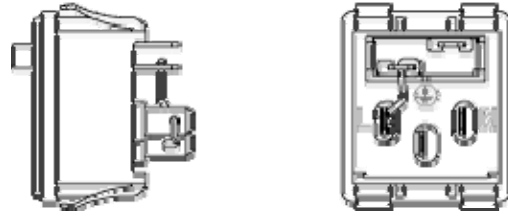
Typical Dimensions	
Threaded Flange Mounting Holes	M3 x 5 (2)

CUFS1

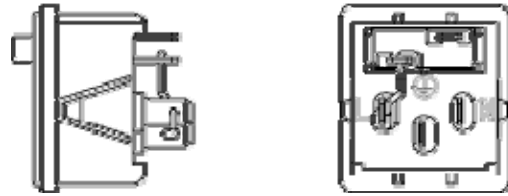


Typical Dimensions			
Output Shroud, Inside:		<u>.21 x .34</u>	
		5.2 x 8.6	
Terminals (3)	<u>.188</u>	Holes (2)	<u>.07 Dia.</u>
	4.8		1.8
Slot	<u>.07 x .16</u>		-
	1.8 x 4.1		

CUE1

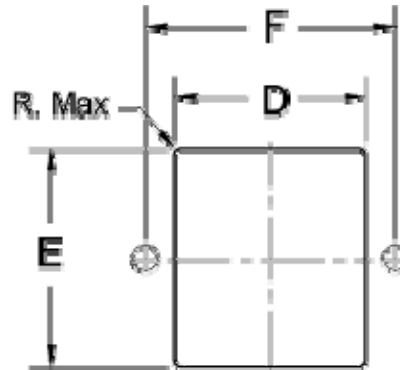


CU10BS1, CU15BS1 Pre-Connected Terminals



Switch output terminal configuration may vary

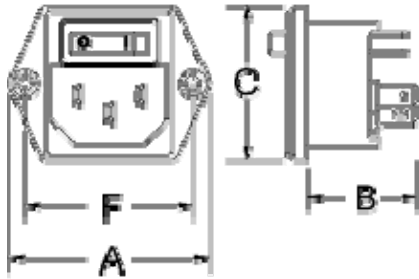
Recommended Panel Cutout



Panel Thickness	
CUFS1, CUS1:	<u>.025 - .082</u>
	0.63 - 2.1
CU10S1	<u>.028 - .039</u>
	0.7 - 1.0
CU15S1	<u>.047 - .059</u>
	1.2 - 1.5
CUFF1	<u>.157 Max.</u>
	4.0 Max

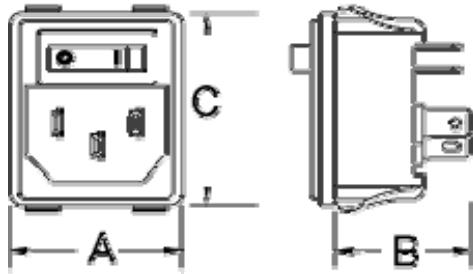
Case Dimensions

Part No.	A	B	C	D	E	F
----------	---	---	---	---	---	---

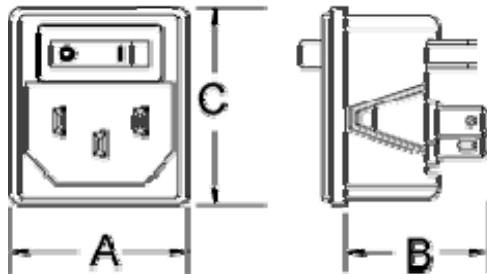


Typical Dimensions	
Mounting Holes (2)	.132 Dia 3.35
with .260 x 90° countersink for #4 Flathead Screw	

CUE1



CU10S1, CU15S1



Typical Dimensions			
Terminals (5)	.188	Holes (4)	.07 Dia.
	4.8		1.8
Slot	.07 x .16	-	
	1.8 x 4.1		

Switch output terminal configuration may vary

	(max.)	(max.)	(max.)	±.004 ±.1	±.0 ±.1	±.0 ±.1
CUFE1	<u>1.73</u>	<u>1.75</u>	<u>1.34</u>	<u>1.11</u>	<u>1.26</u>	<u>1.45</u>
	43.9	44.5	34.1	28.1	31.9	36.8
CUFF1	<u>1.7</u>	<u>1.8</u>	<u>1.34</u>	<u>1.21</u>	<u>1.35</u>	<u>1.45</u>
	43.1	45.0	34.1	30.8	34.3	36.8
CUFS1	<u>1.20</u>	<u>1.8</u>	<u>1.34</u>	<u>1.11</u>	<u>1.26</u>	
	30.6	45.0	34.1	28.1	32.0	
CUE1, CUBE1	<u>1.73</u>	<u>.96</u>	<u>1.34</u>	<u>1.06</u>	<u>1.09</u>	<u>1.45</u>
	43.9	24.6	34.1	26.9	27.6	36.8
CUS1, CUBS1	<u>1.20</u>	<u>0.97</u>	<u>1.34</u>	<u>1.04</u>	<u>1.26</u>	-
	30.6	24.6	34.1	26.4	32.0	
CU10S1, CU10BS1	<u>1.20</u>	<u>0.97</u>	<u>1.34</u>	<u>1.05</u>	<u>1.24</u>	
	30.6	24.6	34.1	26.7	31.6	
CU15S1, CU15BS1	<u>1.20</u>	<u>0.97</u>	<u>1.34</u>	<u>1.05</u>	<u>1.24</u>	-
	30.6	24.6	34.1	26.7	31.6	

Ordering and Design Information

Click on any part number for 3D CAD models, customer drawings, distributor stock status and eCommerce Links. For more information refer to the [Corcom Part Numbering System](#) reference.

Filtered Versions		
1CUFE1	1CUFS1	1CUFF1
3CUFE1	3CUFS1	3CUFF1
6CUFE1	6CUFS1	6CUFF1
10CUFE1	10CUFS1	10CUFF1
Unfiltered Versions		
15CUE1	15CUBE1	15CUS1
15CUBS1	15CU10S1	15CU10BS1

		15CU15S1	15CU15BS1	
USA Customer Service:	1-800-468-2023	<i>Dimensions are in inches and millimeters unless otherwise specified. Values in italics are metric equivalents. Dimensions are shown for reference purposes only. Specifications subject to change.</i>		
Corcom Products Direct:	1-847-680-7400			
Germany:	49-89-6089-0			