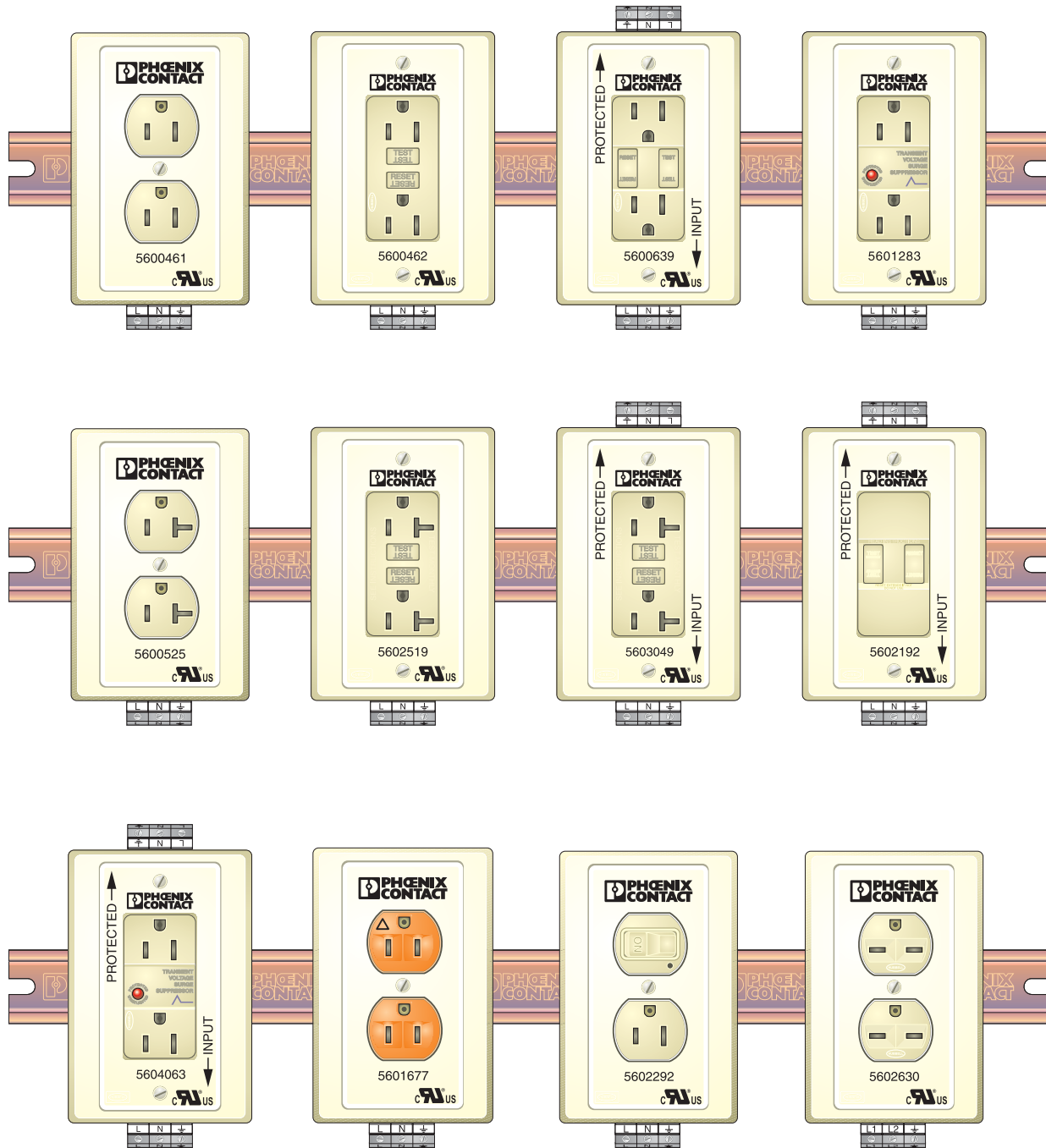


DIN-Rail Mounted Service Outlets

Data Sheet 1476B

June 2003



1476B001

DIN-Rail Mounted Service Outlets

Single Outlets for 250 V ac Use

Data Sheet 1476B

June 2003

Description

The SD and EM-DUO family of service outlets provides a fully enclosed touchproof service outlet for mounting on DIN-rail for today's control cabinets.

The SD series of outlets provides the maximum space savings while providing one outlet for the control panel. The SD outlets are capable of a 15 A capacity and are available in European versions. With a footprint of only 3" x 1.75" the SD outlet will fit quietly in a corner of the control cabinet.

The EM-DUO family of outlets provides maximum usage of today's service outlets. Available in a wide array of variations, the EM-DUO will be able to meet the needs of most UL and non-UL panel shops.

The EM-DUO family is available for usage at the 15 A and 20 A levels as well as versions for 120 V ac and 250 V ac.

All SD and EM-DUO products are UL recognized to be used in any UL panel or system. This allows the user to quickly obtain UL recognized products versus purchasing non-recognized components and awaiting UL approval.

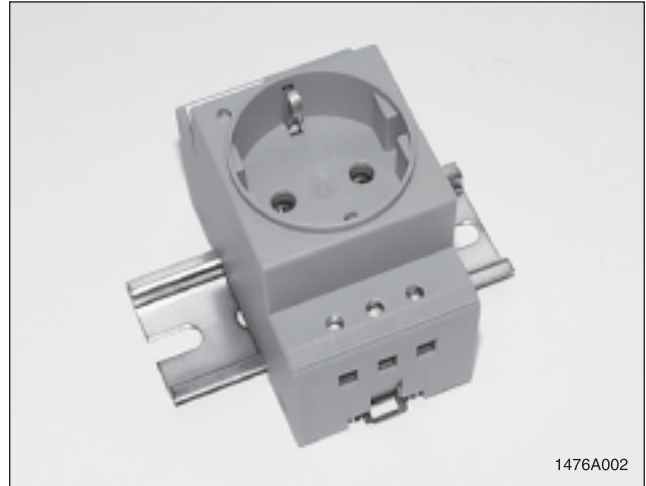


Figure 1. European Outlet

Single Outlet for use with European style plugs

European Version

Part Number: **29 64 89 8**
 Description: **SD-D/SC/LA**

French Version

Part Number: **29 63 33 6**
 Description: **SD-F/SC/LA**

Table 1. EM-DUO SD-US/SC/LA/GY Specifications

Technical Data	
Rated voltage	250 V ac
Rated current	16 A ac, 10 A dc
Wire size	#24-12 AWG
Housing Data	
Color	Green
Material	PVC 94 V-0
Minimum temperature	-20°C
Maximum temperature	+50°C

1476A003

DIN-Rail Mounted Service Outlets



Figure 2. EM-DUO 120/15

Dual Outlet for 120 V ac, 15 amp Service

Standard Dual Outlet

Part Number: **56 00 46 1**
 Description: **EM-DUO-120/15**

Ground Fault Circuit Interruption (GFI)

Part Number: **56 00 46 2**
 Description: **EM-DUO-120/15/GFI**

GFI Detection with Auxiliary Outputs

Part Number: **56 00 63 9**
 Description: **EM-DUO-120/15/GFI/AUX**

Surge Protected Outlets

Part Number: **56 01 28 3**
 Description: **EM-DUO-120/15/SPD**

Surge Protected with Auxiliary Outlets

Part Number: **56 04 06 3**
 Description: **EM-DUO-120/15/SPD/AUX**

Table 2. EM-DUO 120/15 Specifications

Technical Data	
Rated voltage	125 V ac/dc
Rated current	15 A ac
Maximum wire size	#10 AWG
GFI response time	25 mS @ 4-6 mA
GFI units comply with UL943	
Surge Protection Data	
Rated voltage	120 V ac +10%-15%
Response time	>5 ηS
Protection mode	normal and common mode
Maximum surge current	13 kA (8 x 20 μs)
Protection level	@ 500 A, 340 V @ 3 kA, 490 V
Housing Data	
Color	Ivory
Material	PVC 94 V-0
Minimum temperature	-40°C (w/o impact)
Maximum temperature	+70°C

1476A005



Figure 3. EM-DUO 120/20

Dual Outlet for 120 V ac, 20 amp Service

Standard Dual Outlet

Part Number: **56 00 52 5**
 Description: **EM-DUO-120/20**

Ground Fault Circuit Interruption (GFI)

Part Number: **56 02 51 9**
 Description: **EM-DUO-120/20/GFI**

GFI Detection with Auxiliary Outputs

Part Number: **56 03 04 9**
 Description: **EM-DUO-120/20/GFI/AUX**

Faceless GFI (No Sockets)

Part Number: **56 02 19 2**
 Description: **EM-DUO-120/20/GFI/AUX/NO**

Table 3. EM-DUO 120/20 Specifications

Technical Data	
Rated voltage	125 V ac/dc
Rated current	20 A ac
Maximum wire size	#10 AWG
GFI response time	25 mS @ 4-6 mA
GFI units comply with UL943	
Housing Data	
Color	Ivory
Material	PVC 94 V-0
Minimum temperature	-40°C (w/o impact)
Maximum temperature	+70°C

1476A007

DIN-Rail Mounted Service Outlets



Figure 4. EM-DUO 120/15-SWO

Special Outlets for 120 V ac, 15 and 20 amp Service

15A Switched Outlet (Switch controlled outlet)
 Part Number: 56 02 29 2
 Description: EM-DUO-120/15-SWO

20A Switched Outlet (Switch controlled outlet)
 Part Number: 56 03 89 0
 Description: EM-DUO-120/20-SWO

Isolated Ground Outlet (Orange)
 Part Number: 56 01 67 7
 Description: EM-DUO-120/15/IG

Table 4. EM-DUO 120/...-SWO Specifications

Technical Data	
Rated voltage	125 V ac/dc
Rated current	15 A ac
Maximum wire size	#10 AW
Housing Data	
Color	Ivory
Material	PVC 94 V-0
Minimum temperature	-40°C (w/o impact)
Maximum temperature	+70°C

1476A009



Figure 5. EM-DUO 250/15

Dual outlet for 250 V ac, 15 amp Service

Standard Dual Outlet
 Part Number: 56 02 63 0
 Description: EM-DUO-250/15

Table 5. EM-DUO 250/15 Specifications

Technical Data	
Rated voltage	250 V ac/dc
Rated current	15 A ac, 10 A dc
Maximum wire size	#10 AW
Housing Data	
Color	Ivory
Material	PVC 94 V-0
Minimum temperature	-40°C (w/o impact)
Maximum temperature	+70°C

1476A011

DIN-Rail Mounted Service Outlets

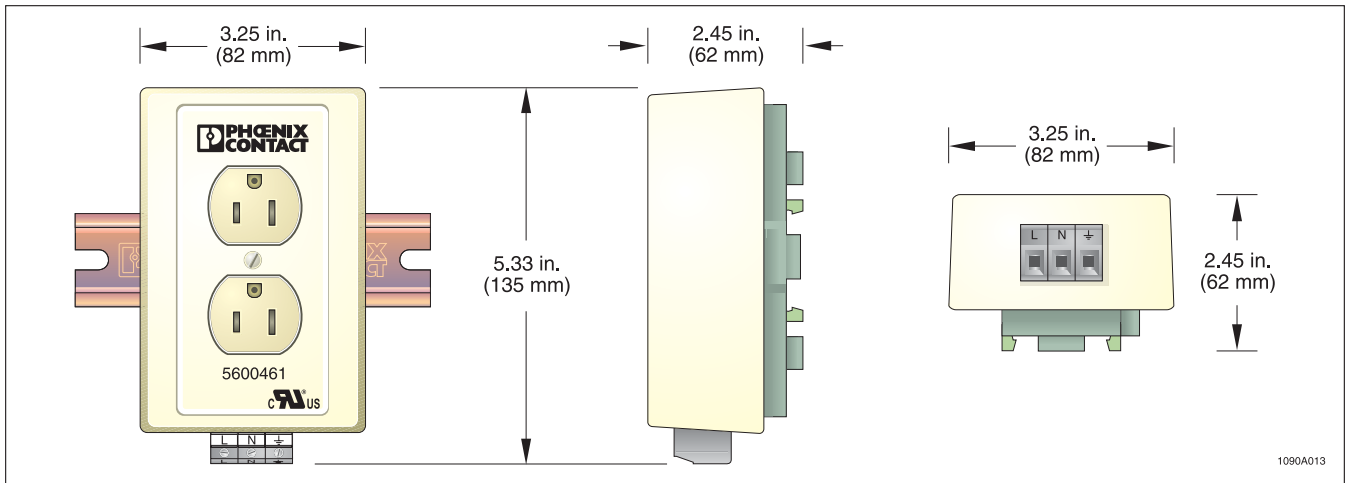


Figure 6. EM-DUO/120/15 Dimensional Diagram

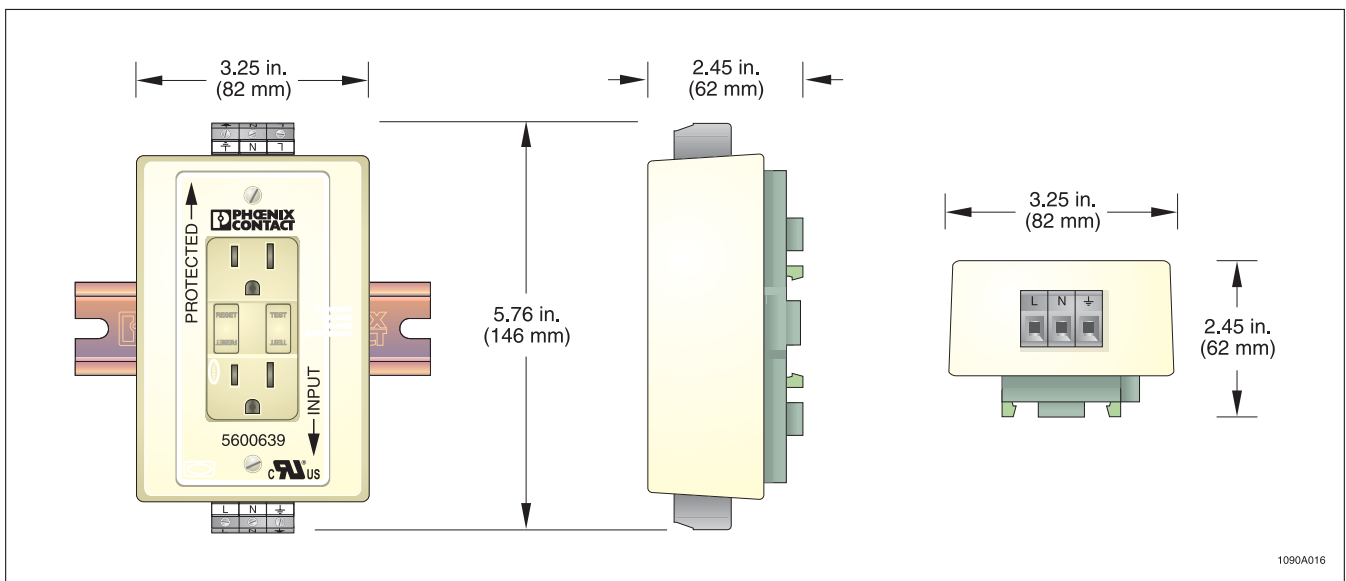


Figure 7. EM-DUO/120/15/GFI/AUX Dimensional Diagram

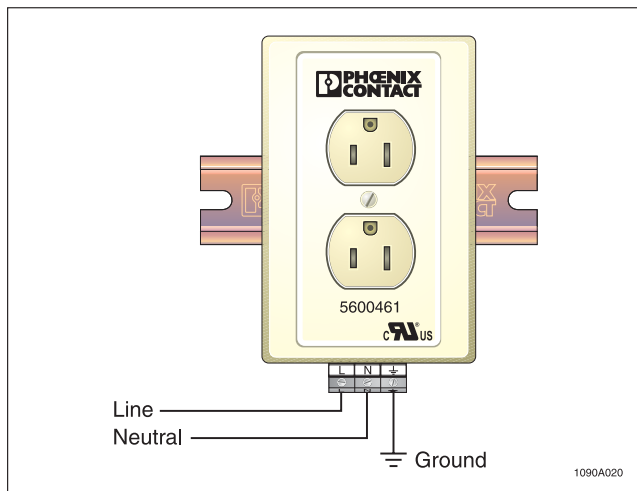


Figure 8. EM-DUO/120/15 Connection Diagram

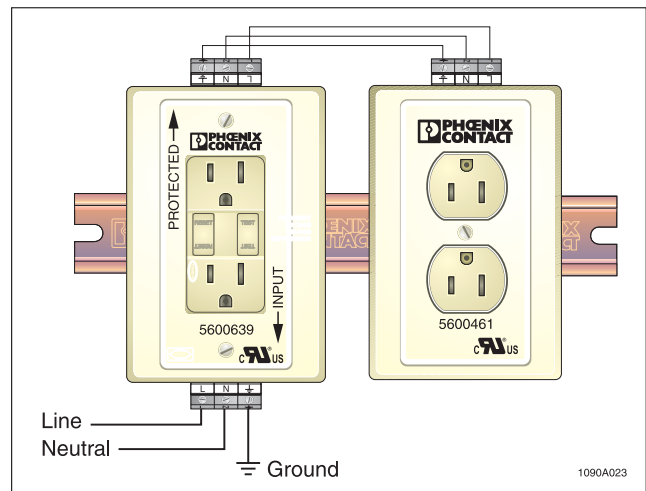


Figure 9. EM-DUO 120/15/GFI/AUX Connection Diagram

DIN-Rail Mounted Service Outlets

The information given herein is based on data believed to be reliable, but Phoenix Contact Inc. makes no warranties expressed or implied as to its accuracy and assumes no liability arising out of its use by others. This publication is not to be taken as a license to operate under, or recommendation to infringe, any patent.

Headquarters, U.S.

Phoenix Contact Inc.
P.O. Box 4100
Harrisburg, PA 17111-0100
Phone: (717) 944-1300
Fax: (717) 944-1625
Email: info@phoenixcon.com
Web Site: www.phoenixcon.com

Technical Support or Information

Phone: 1-800-322-3225
Documentation Fax: 1-800-944-9901

Headquarters, Canada

Phoenix Contact Ltd.
235 Watline Avenue
Mississauga, Ontario L4Z 1P3
Phone: (905) 890-2820
Fax: (905) 890-0180

