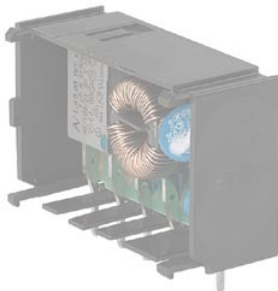


## IEC Appliance Connector C14 with Line Switch 1- or 2-pole



Inlet with line switch

KPF Filter Module  
(not enclosed)**Description**

- Panel Mount: Sandwich/rear-side
- 2 Functions: Appliance Inlet Protection class I, Line switch 1- and 2- pole
- For PCB mounting
- Alternative: version with line filter [KPF](#); [KPS](#)
- We recommend for new applications the new type [DC21](#)

**Approvals**

- VDE License Number: 40008635
- UL License Number: E96454
- CSA License Number: 38456

**Characteristics**

- Panel mount from rear or "sandwich" between top and bottom/side to side panels
- PCB mount with snap-in or screw-on <BREAK/> feet (self tapping screws Ø 3 x 8 mm)
- All single elements are already wired
- Line switch non-illuminated
- Insulation cover on the rear-side
- Qualified for use in equipment according IEC/EN 60950

**Other versions on request**

- Solder terminals
- Quick-connect terminals
- Line switch, illuminated (only 2-pole version)
- Line switch with other rocker marking
- For protection class II

**Weblinks**

[Approvals](#), [RoHS](#), [CHINA-RoHS](#), [e-Store](#), [SCHURTER-Stock-Check](#), [Distributor-Stock-Check](#)

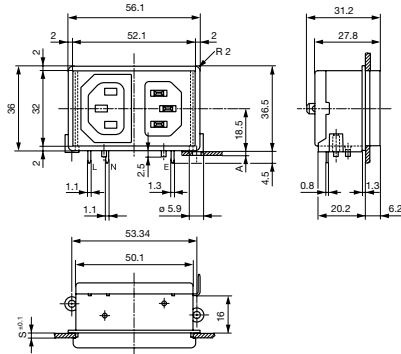
**Technical Data**

Ratings IEC	10A / 250VAC; 50Hz
Ratings UL/CSA	15A / 250VAC; 60Hz
Dielectric Strength	> 2.3kVAC between L-N > 2.8kVAC between L/N-PE (1 min/50Hz)
Allowable Operation Temp.	-25 °C to 70 °C
Degree of Protection	from front side IP 40 acc. to IEC 60529
Protection Class	Suitable for appliances with protection class I acc. to IEC 61140
Terminal	For PCB mounting Quick connect terminals 4.8 x 0.8 mm Solder terminal on request
Panel Thickness s	Snap-in: 1.5/ 2/ 2.5/ 3 mm
Material: Housing	Thermoplastic, black, UL 94V-0

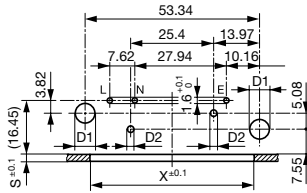
Appliance-Inlet/-Outlet	C14 acc. to IEC/EN 60320-1, UL 498, CSA C22.2 no. 42 (for cold conditions) pin-temperature 70 °C, 10A, Protection class I
Line Switch	Rocker switch 1 or 2 pole, non-illuminated, acc. to IEC 61058-1 <a href="#">Technical details</a>

## Dimensions

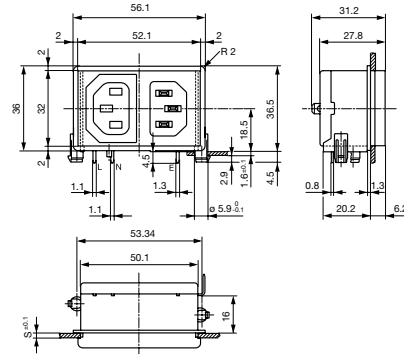
Screw on PCB mounting



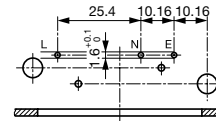
A = for PCB-thickness 1.2/1.6/2.0/2.4 mm  
 Additional quick connect terminal 4.8 x 0.8 mm  
 For 2-pole inlet/switch, 2-pole inlet/fuseholder and inlet/outlet



56.1 mm  
 Snap-in PCB mounting

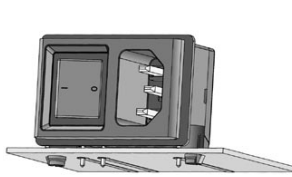


Additional quick connect terminal 4.8 x 0.8 mm  
 s = panel thickness  
 For 1-pole inlet/switch and 1-pole inlet/fuseholder  
 S and X see mounting holes

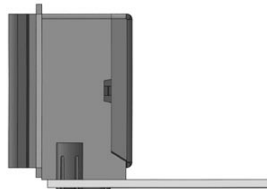


Other dimensions as for 2-poles  
 d1 = 6 ± 0.05 (for snap-in)  
 d1 = 3.6 (screw-on)  
 d2 = 2 ± 0.1 (screw-on)  
 Dimensions without tolerance:  
 ≤ 15 = ± 0.05; ≥ 15 = ± 0.1

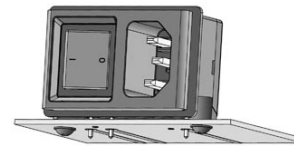
## Mounting instructions



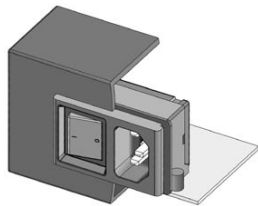
Stable snap feet requires minimal insertion force



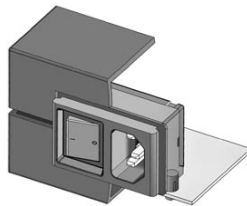
Module must lay flat on the PCB when soldering



Screw-on mount uses self-tapping screws

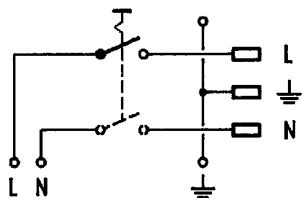


Insertion from behind



"Sandwich" mounting with split enclosure panels

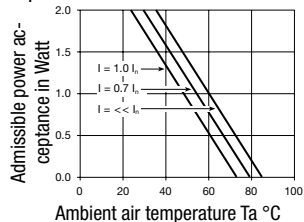
## Diagrams



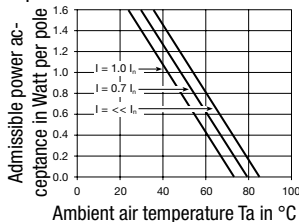
Inlet with line switch

## Derating Curves

1-pole



2-pole



## Variants

[Distributor-Stock-Check](#) | [SCHURTER-Stock-Check](#) | [e-Store](#)

Panel mounting	Panel Thickness [mm]	PCB [mm]	Line Switch	Fuseholder	Connector	Order Number
Screw-on	2	1.2/1.6/2.0/2.4	1 pole	-	-	KP01.1252.11
Screw-on	2	1.2/1.6/2.0/2.4	2-pole	-	-	KP01.1152.11
Screw-on	3	1.2/1.6/2.0/2.4	1 pole	-	-	KP01.1253.11
Screw-on	3	1.2/1.6/2.0/2.4	2-pole	-	-	KP01.1153.11
Snap-in	2	1.6	1 pole	-	-	KP01.1212.11
Snap-in	2	1.6	2-pole	-	-	KP01.1112.11
Snap-in	3	1.6	1 pole	-	-	KP01.1213.11
Snap-in	3	1.6	2-pole	-	-	KP01.1113.11

Type KP without cover: KP01.XXXX.XX90

Ground Terminal with solder pin: KP01.XXXX.X3XX

**Packaging unit** 50 Pcs

## Mating Outlets/Connectors

Category / Description

### Appliance Outlet



IEC appliance outlet F, screw-on mounting, front side, solder /quick connect terminal	4787
IEC appliance outlet F, screw-on mounting, front side, solder /quick connect terminal	4788
IEC appliance outlet F oder H, screw-on mounting, front side, solder/PCB/quick connect terminal	5091
IEC appliance outlet F oder H, screw-on mounting, front side, solder/quick connect terminal	5092