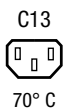


IEC cord connector C13, rewireable, angled



4785



### Description

- Rewireable plug:
- Screw-on
- Outlet, Pin temperature 70 °C, Protection class I
- Cable
- Substitute for type [P587.SE](#)

### Approvals

- VDE License Number: 40010732
- UL License Number: E96454
- CSA License Number: 56242

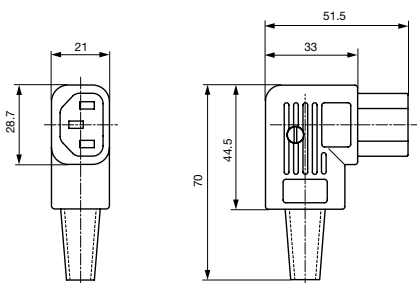
### Technical Data

Ratings IEC	10 A / 250 VAC; 50 Hz	Appliance-Inlet/-Outlet	C13 acc. to IEC/EN 60320-1,
Ratings UL/CSA	15 A / 250 VAC; 60 Hz		UL 498, CSA C22.2 no. 42 (for cold
Dielectric Strength	> 2 kVAC between L-N > 2 kVAC between L/N-PE (1 min/50 Hz)		conditions) pin-temperature 70 °C, 10 A,
Allowable Operation Temp.	-25 °C to 70 °C		Protection class I
Protection Class	Suitable for appliances with protection class I acc. to IEC 61140		
Terminal	Cable		
Material: Housing	Thermoplastic, black, UL 94V-0		

### Dimensions

4785

Length |-----| 70 mm



### Variants

Color	Max. cable diameter	Max. wire size	Order Number
black	8.5 mm	3 x 1 mm <sup>2</sup> / 3 x 18 AWG	4785.0000
black	10.0 mm	3 x 2.1 mm <sup>2</sup> / 3 x 14 AWG	4785.0100

Max. torque for screws: Terminal: 0.5 Nm, Cable clamp: 0.3 Nm, Cover: 0.3 Nm

Cord retaining clamp see accessories

**Packaging unit** 100 Pcs