

# Switchcraft®

[Previous Page](#) | [Return to Index](#) | [Next Page](#)



## DIN PLUGS

1. STRAIGHT CORD PLUG with 30° lock ring
2. STRAIGHT CORD PLUG with Shielded Barrel

[click here to download a schematic drawing](#)

(you will need to have Adobe Acrobat installed on your system to do this)



### STRAIGHT CORD PLUG with 30° lock ring

**Type 05CL5M - typical:** Male plug with ground key-rib. Unique 30° turn locking securely fastens two halves of connector. Mates with lock flange female connectors and receptacles. Insert screw holds insert assembly in shell and also retains locking on shell. Flexible black strain relief with 7/32" diameter cable entry. Heavy duty clamp.

### ORDERING INFORMATION

Part Number	Description	Pin Arrangement
05CL3M	3 pins at 180°	2
05CL5M	5 pins at 180°	5
09CL4M	4 pins at 210°	3
12CL5M	5 pins at 240°	4
⌘15CL7M	7 pins at 270°	7
⌘15CL8M	8 pins at 270°	8

## STRAIGHT CORD PLUG with Shielded Barrel

**Type 15GM7M - typical:** Male cord plug with shielded barrel and insulated snaplock plastic body. Two piece metal barrel surrounds pin insert to form an electrical shield. The entire insert assembly is held together by snapping the insulated plastic shell over the assembly. The barrel's special metal tab locks the shell in place. Standard color of plastic shell is gray. All-purpose cable clamp.

## ORDERING INFORMATION

Part Number	Description	Pin Arrangement
05GM3M	3 pins at 180°, Gray body and strain relief.	2
05GM5M	5 pins at 180°, Gray body and strain relief	5
⌘09GM4M	4 pins at 210°, Gray body and strain relief	3
12GM5M	5 pins at 240°, Gray body and strain relief	4
⌘12GM6M	6 pins at 240°, Gray body and strain relief	6
15GM7M	7 pins at 270°, Gray body and strain relief	7
15GM8M	8 pins at 270°, Gray body and strain relief	8
⌘20GM8M	8 pins at 262°, Gray body and strain relief	10

⌘ Available on special order only; contact Switchcraft for price and delivery.

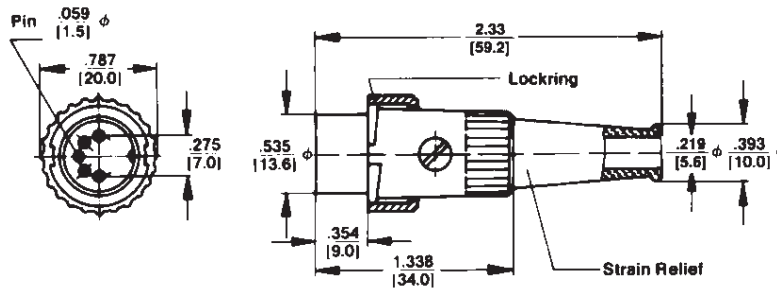
**SPECIFYING NOTE:** Use letter "JL" in place of "GM" to order same part number with black housing.

[Previous Page](#) | [Return to Index](#) | [Next Page](#)

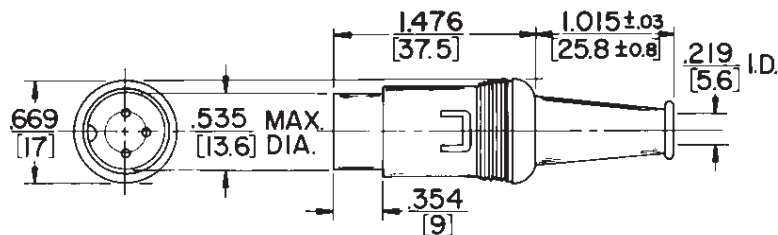
SWITCHCRAFT, INC. 5555 N. Elston Ave.  
Chicago, IL 60630 • 773 792-2700 • FAX: 773 792-2129  
www.switchcraft.com

## DIN PLUGS

### STRAIGHT CORD PLUG with 30° lock ring



### STRAIGHT CORD PLUG with Shielded Barrel



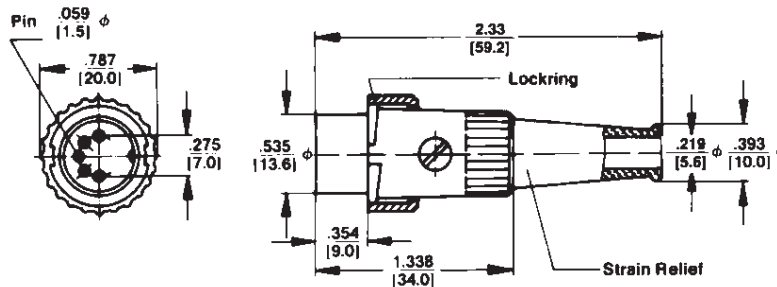
DIMENSIONS ARE FOR REFERENCE ONLY

$\frac{\text{Inch}}{\text{(mm)}}$

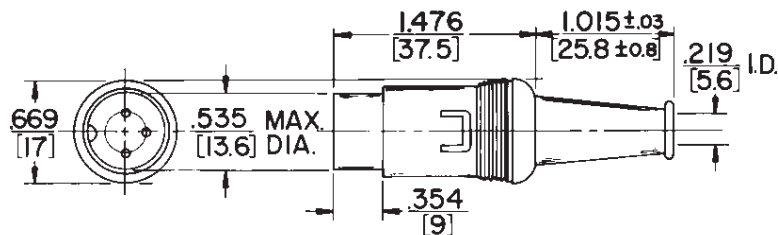
SWITCHCRAFT, INC. 5555 N. Elston Ave.  
Chicago, IL 60630 • 773 792-2700 • FAX: 773 792-2129  
www.switchcraft.com

## DIN PLUGS

### STRAIGHT CORD PLUG with 30° lock ring



### STRAIGHT CORD PLUG with Shielded Barrel



DIMENSIONS ARE FOR REFERENCE ONLY

$\frac{\text{Inch}}{\text{(mm)}}$