

# Plugs & Jacks



## Content

## Page

Plugs:		Jacks:	
1/4" Phone Plugs - PX Series .....	29	Locking 1/4" Cable and Chassis Jacks .....	35
1/4" Phone Plugs - Silent Plug .....	30	1/4" Vertical Jacks .....	36
1/4" Professional Phone Plugs - P Series .....	31	M Jacks .....	37
MIL/B-Gauge Type Phone Plugs .....	31	Slim Jacks .....	38
0.173" Bantam Type Miniature Plugs .....	32	Stacking Jacks .....	39
3.5 mm Right-Angle Stereo Plug .....	32	Technical Data .....	40
Technical Data .....	33	Ordering Information .....	41
Accessories .....	33		
Ordering Information .....	34		

## Introduction

The Neutrik® plug and jack program offers a wide range of professional phone connectors including 1/4", 3.5 mm, MIL/B-gauge style and TT or bantam style plugs. The jack range offers an exceptional "slim" 1/4" PCB jack that is almost 20% smaller than most other designs. The heavy duty M line combines a wide range of options such as three different nose forms and four styles of contacts including 3 PCB and one solder tab. It also includes a 1/4" chassis and cable jack line with the secure locking feature, well known from the XLR range. All jacks are manufactured from strong high-grade thermoplastics and are available in all common versions which make them suitable for audio and industrial applications.

Neutrik® offers also a special jack version which is a combined 3 pole XLR receptacle and a 1/4" phone jack for balanced mic or line inputs in one XLR shell. This "one for two" panel mount offers substantial cost saving, labour and material. For more information on the Combo products see page 20 or visit our website at [www.neutrik.com](http://www.neutrik.com).

The plug line features:

- Mono (TS) and Stereo (TRS) plugs
- Straight and right-angle versions
- Rugged diecast shell in Nickel or black Chromium
- Nickel or gold plated contacts
- Chuck type strain relief
- Precision machined plugfinger without rivets
- Coloured boots and rings for coding
- True 3.5 mm stereo plug
- Silent Plug for instrument (guitar) applications

All plugs and jacks are specified to IEC 60603-11 and EIA RS-453 or the respective MIL standard.

L o o k   f o r   t h e   L o g o



# Plugs



## 1/4" Phone Plug - PX and PRX Series



NP2X



NP3X-B



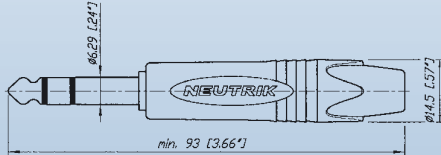
NP3X + PXR-5



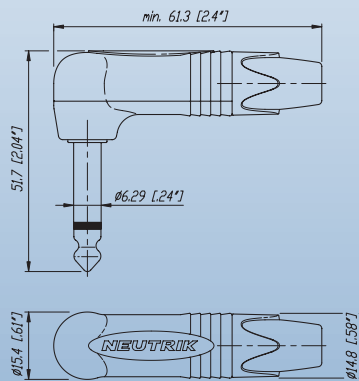
NP2RX-B

- Slim 1/4" plug with million fold proven chuck type strain relief
- Precision machined one piece contacts - no rivets
- Sleek attractive design for best handling convenience
- 14.5 mm only in diameter (right angle 15.4 mm) - serves highest packing density of 15.88 mm jack pitch
- Nickel or gold plugfinger in mono (TS) and stereo (TRS)

NP3X



NP2RX



15.88 mm jack pitch:



t o i d e n t i f y t h e o r i g i n a l



**Attention!**

Use only for instrument (guitar) applications.  
Connecting an amplifier output may blow your amp!

## 1/4" Phone Plug - Silent Plug

**NEW**



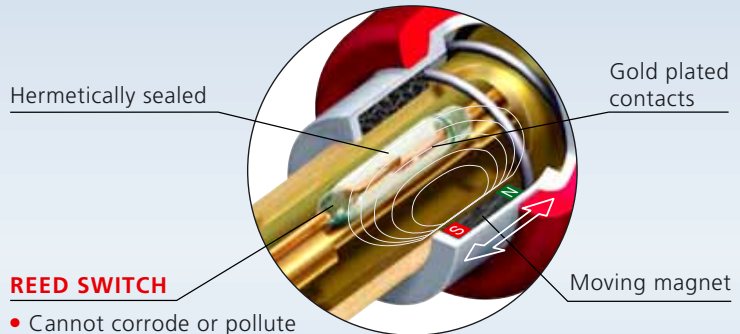
- Avoid pops and squeals
- Hermetically sealed switching contacts
- Lifetime beyond 10'000 mating cycles
- Slim right-angle plug with industry proven and reliable chuck type cable strain relief
- Sleek attractive design for convenient handling and connections

### Design Criteria

The Silent Plug automatically mutes (shorts) an instrument (guitar) cable to avoid pops and squeals when changing the instrument (guitar) under load.

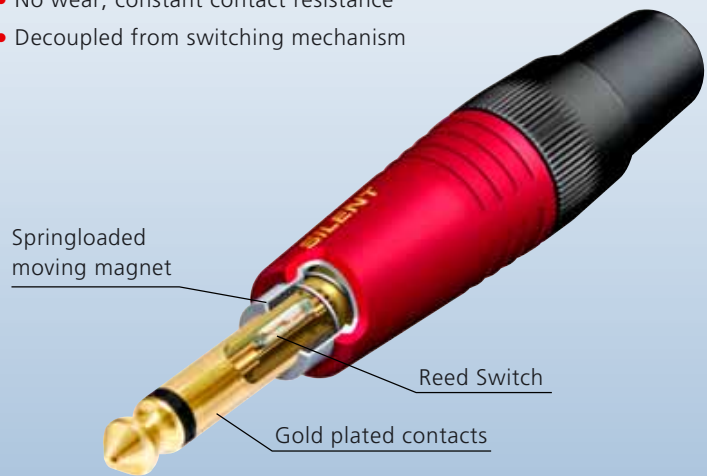
The integrated silent switch (pat. pending) is based on REED-technology and guarantees a lifetime beyond 10'000 mating cycles.

### Detail Silent Switch:

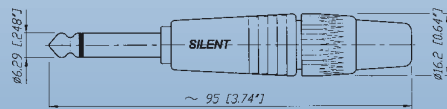


### REED SWITCH

- Cannot corrode or pollute
- No wear, constant contact resistance
- Decoupled from switching mechanism

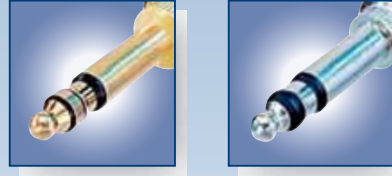


NP2C-AU-SILENT



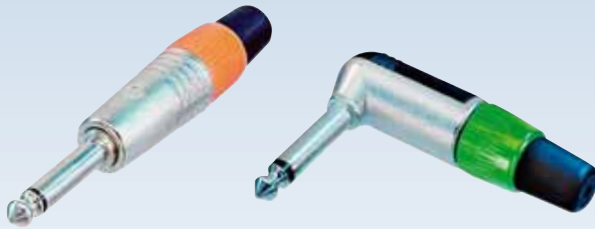


# Plugs



## 1/4" Professional Phone Plugs

## MIL/B-Gauge Type Phone Plugs



NP2C + BSP-3

NP2RCS + BSP-5

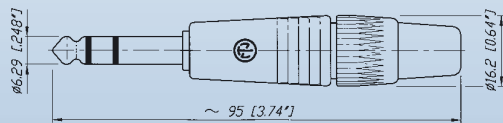
NP3TB-R

NP3CM-B

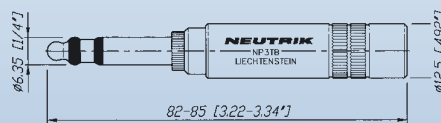
- Available in mono (TS) or stereo (TRS)
- Meets EIA / IEC standards
- Unique plug finger design without rivets
- Sturdy diecast metal shell
- Excellent Neutrik® chuck type strain relief

- 1/4" "B-Gauge" and "MIL" Type Plugs
- All metal design, chuck type strain relief, no rivets
- Meet all prevailing standards
- Available as plug fingers only for overmolding

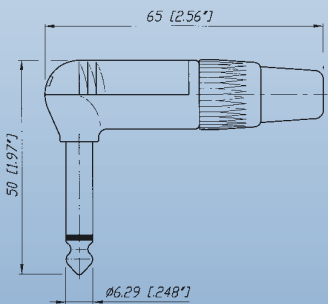
NP3C



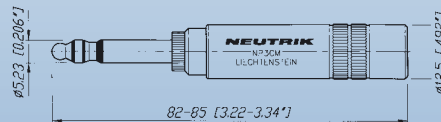
NP3TB-B



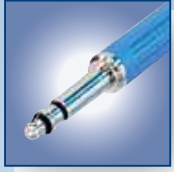
NP2RCS



NP3CM-B



- Quality Design



## 0.173" Bantam Type Miniature Plugs

## 3.5 mm Right-Angle Stereo Plug



NP3TT-1-B



NP3TT-2



NTP3RC

- Very robust ergonomic design
- Gold contact version in combination with the NJ3TTA jack eliminates contact problems due to corrosion or dirt
- The single plug NP3TT-P and the dual bantam plug NP3TT-2 are made for assembling with a standard HEX crimping tool as used with coax cables
- Solder termination for T + R, crimp termination for sleeve contact

- The only available 3.5 mm plug with chuck type strain relief
- All metal housing - reliable and robust
- Easy to assemble, simple to use
- Slim design - space saving
- Excellent cable protection
- All Nickel or black housing, available with gold plated contacts

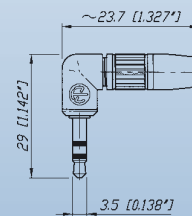
NP3TT-1



NP3TT-P



NTP3RC



# Technical Data

Specifications	1/4" Phone Plugs & SILENT Plug	MIL / B-gauge Type	0.173" Bantam Type	3.5 mm Stereo Plugs
----------------	-----------------------------------	--------------------	--------------------	---------------------

Electrical					
Rated current:	depends on mating connector	•	•	•	•
Contact resistance:	depends on mating connector	•	•	•	•
Insulation resistance:	- initial: > 2 GΩ	•	•	•	•
	- after damp heat test: ≥ 1 GΩ	•	•	•	•
Dielectric strength	1 kV dc	•	•	•	•

Mechanical					
Lifetime > 1'000 mating cycles		•	•	•	•
Wiring:	solder terminals	•	•	•	•
Wire size	mm <sup>2</sup>	1	1 (NP3CM: 0.5)	0.25	0.22
	AWG	18	18 (NP3CM: 20)	24	24
Cable O.D.:	mm	4 - 7	4 - 7	4.8 max	2 - 4.5

Materials				
Shell:	Zinc diecast (ZnAl4Cu1) Ni or black Cr plated	Brass (CuZn39Pb3) black or red coated	Brass (CuZn39Pb3) 2 μm Ni (Su) plated PA 6 30 % GR	Zinc diecast (ZnAl4Cu1) Ni or black Cr plated
Insulation: Polyamide (PA 6.6 30 % GR)	•	•	•	PA 6.6 15% GR
Contacts: Brass (CuZn39Pb3) 2 μm Ni (Su) or Au plated	• • or Au	• • or Brass	• (Tip: CuSn6) 2 μm TRIBOR® (NiP-AuCo)	• • or Au
Chuck:	POM	POM	-	POM
Bushing:	POM + PU	-	-	CuZn39Pb3 + PU (Ni or black Chrome)

Environmental				
Temperature range: -20 °C to +65 °C	•	•	•	•
Solderability: Complies with IEC 68-2-20	•	•	•	•

## Accessories

					
BSP-*	BPX-*	PXR-*	BSTT-*	BSTP-*	PCR-*
BSP-*	Coloured bushing for NP*C Series		BSTP-*	Coloured sleeves for NP3TT-P Series	
BPX-*	Coloured bushing for NP*X Series		PXR-*	Coloured marking rings for NP*X Series	
BSTT-*	Coloured sleeves for NP3TT Series		PCR-*	Coloured marking rings for NP*C Series	
*: 0 - Black, 1- Brown, 2 - Red, 3 - Orange, 4 - Yellow, 5 - Green, 6 - Blue, 7 - Violet, 8 - Grey, 9 - White; Must be ordered in multiples of 100.					

Assembly tool	
HX-TT-1	Assembly and crimp tool for NP3TT-1/AU
HX-R-BNC	HEX crimp tool for NP3TT-P*
DIE-R-BNC-PJ	HEX crimp die for NP3TT-P* (5.4 mm)

- Quality Design

# Ordering Information

Part Number	Shell	Contacts	Standards Compatibility	Remarks
-------------	-------	----------	----------------------------	---------

## 1/4" Professional Phone Plugs - PX and PRX Series

NP2X	NP2RX	Nickel	Nickel	IEC 60603-11 / EIA RS-453	Mono plug, black bushing, chuck type strain relief
NP2X-BAG	NP2RX-BAG	Black Cr	Nickel	●	Mono plug, black bushing, chuck type strain relief
NP2X-B	NP2RX-B	Black Cr	Gold	●	Mono plug, black bushing, chuck type strain relief
NP3X	NP3RX	Nickel	Nickel	●	Stereo plug, black bushing, chuck type strain relief
NP3X-BAG	NP3RX-BAG	Black Cr	Nickel	●	Stereo plug, black bushing, chuck type strain relief
NP3X-B	NP3RX-B	Black Cr	Gold	●	Stereo plug, black bushing, chuck type strain relief
*-D					Bulk packed to be ordered in multiples of 100

## SILENT Guitar Plug

NP2C-AU-SILENT	red coated	Gold	IEC 60603-11/EIA RS-453	Mono plug , chuck-type strain relief, silent switch
NP2RX-AU-SILENT	red coated	Gold	IEC 60603-11/EIA RS-453	right angle mono plug, chuck-type strain relief, silent switch

## 1/4" Professional Phone Plugs - PC Series

NP2C	Nickel	Nickel	IEC 60603-11/EIA RS-453	Mono plug, black bushing, chuck type strain relief
NP3C	Nickel	Nickel	●	Stereo plug, black bushing, chuck type strain relief
NP2C-BAG	Black Cr	Nickel	●	Mono plug, black bushing, chuck type strain relief
NP3C-BAG	Black Cr	Nickel	●	Stereo plug, black bushing, chuck type strain relief
NP2C/B	Black Cr	Gold	●	Mono plug, black bushing and gold contacts, chuck type strain relief
NP3C/B	Black Cr	Gold	●	Stereo plug, black bushing and gold contacts, chuck type strain relief
NP2C-BAG-T-AU	Black Cr	Nickel + T: Gold	●	Mono plug, black bushing with gold tip, chuck type strain relief
NP2C-T10AA	Nickel	Nickel	●	Built-in 1:10 transformer to convert mic level to guitar inputs
NP2RCS	Nickel + black plastic	Nickel	●	Mono right-angle plug, black bushing, chuck type strain relief
NP3RCS	Nickel + black plastic	Nickel	●	Stereo right-angle plug, black bushing, chuck type strain relief
NP*C-D				Bulk packed to be ordered in multiples of 100
NP2C-T10AA	Nickel	Nickel	●	Mono plug, red bushing, with built-in transformer to convert microphone levels to guitar inputs, chuck type strain relief

## MIL/B-gauge Type Phone Plugs

NP3TB-B	Black	Nickel	B-GAUGE BP0316	1/4" B-Gauge plug, chuck type strain relief
NP3TB-R	Red	Nickel	●	1/4" B-Gauge plug, chuck type strain relief
NP3TM-B	Black	Nickel	MIL-P-642/2	1/4" MIL plug , chuck type strain relief
NP3TM-R	Red	Nickel	●	1/4" MIL plug , chuck type strain relief
NP2CM-B	Black	Brass	MIL-P-642/4	Mono 1/4" MIL plug, chuck type strain relief
NP2CM-R	Red	Brass	●	Mono 1/4" MIL plug, chuck type strain relief
NP3CM-B	Black	Brass	MIL-P642/5A	Stereo 5.23 mm (0.206") MIL plug, chuck type strain relief
NP3CM-R	Red	Brass	●	Stereo 5.23 mm (0.206") MIL plug, chuck type strain relief

## 0.173" Bantam Type Miniature Plugs

NP3TT-1-B	Nickel + black plastic	Nickel	MIL-P-642/13	4.4 mm (0.173") Bantam plug with solder contacts, black sleeve
NP3TT-1-R	Nickel + red plastic	Nickel	●	4.4 mm (0.173") Bantam plug with solder contacts, red sleeve
NP3TT-AU-B	Nickel + black plastic	Gold	●	4.4 mm (0.173") Bantam plug with solder contacts, black sleeve
NP3TT-AU-R	Nickel + red plastic	Gold	●	4.4 mm (0.173") Bantam plug with solder contacts, red sleeve
NP3TT-P-B	Black plastic	Nickel	●	4.4 mm (0.173") Bantam plug with solder contacts, black sleeve
NP3TT-P-R	Red plastic	Nickel	●	4.4 mm (0.173") Bantam plug with solder contacts, red sleeve
NP3TT-P-AU-B	Black plastic	Gold	●	4.4 mm (0.173") Bantam plug with solder contacts, black sleeve
NP3TT-P-AU-R	Red plastic	Gold	●	4.4 mm (0.173") Bantam plug with solder contacts, red sleeve
NP3TT-2	Black plastic	Nickel	●	4.4 mm (0.173") Twin Bantam plug with solder contacts, black sleeve

## 3.5 mm Right-Angle Stereo Plug

NTP3RC	Nickel	Nickel		3.5 mm audio plug with chuck and bushing
NTP3RC-B	Black Cr	Gold		3.5 mm audio plug with chuck and bushing

Look for the Logo





# Locking Jacks



## Locking 1/4" Cable Jacks

## Locking 1/4" Chassis Jacks



NJ3FC6

NJ3FC6-BAG

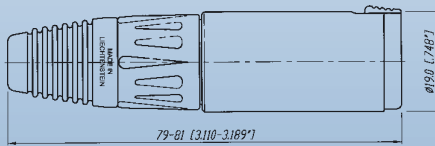
NJ3FP6C

NJ3FP6C-BAG

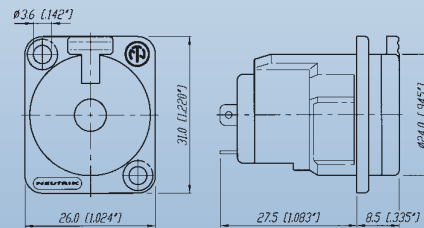
- Securely locking cable jack
- Mates with all mono or stereo plugs specified to EIA RS-453
- Extremely robust and reliable
- Excellent Neutrik® cable retention
- Coloured boots available in 10 colours
- For cable O.D. up to 8 mm

- Mates with all mono or stereo plugs specified to EIA RS-453
- Dimensionally compatible with D Series (31 x 26 mm)
- Securely locking chassis jack
- Solder terminals
- Special version with black plastic shell
- Choasable grounding option

NJ3FC6



NJ3FP6C



t o i d e n t i f y t h e o r i g i n a l



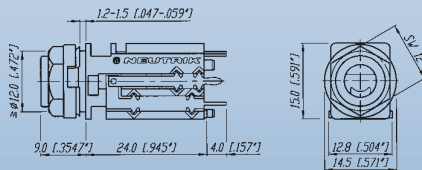
## 1/4" Vertical Jacks



NJ\*FD-V

- Quick Cap Fixing System reduces assembly time drastically through snapping mounting cap
- Retention force is provided by a special spring element, independent from contacts
- All common circuits available
- Two versions for mating of plugs acc. to EIA RS-453 (NJ\*FD-V) or B-gauge BP0316 (NJ\*TB-V)

### NJ\*FD-V



\* ... 2, 3, 5, 6



## M Jacks



NMJ4HHD2



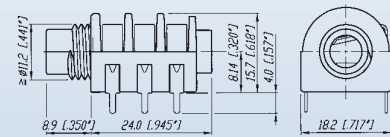
NMJ2HC-S



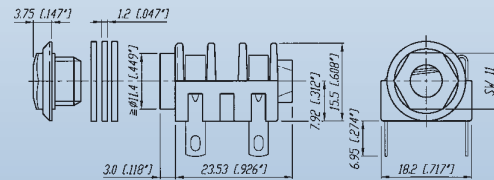
NMJ6HFD2-SAU

- Wide body and extremely durable contacts
- Available in all common versions:
  - mono
  - stereo
  - switched
  - unswitched
- Hardwire and PCB version
- Nose type in
  - half threaded
  - fully threaded
  - chrome ferrule
- Full threaded and chrome nose M Jacks are supplied with washer and fixing nut
- Mounting hardware for half threaded nose must be ordered separately
- Fascia appearance in plastic or chrome

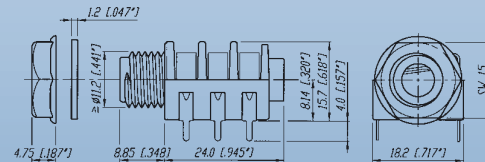
NMJ4HHD2



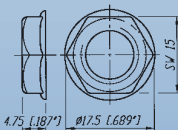
NMJ4HC-S



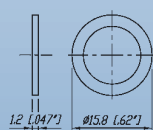
NMJ6HFD2



NRJ-NUT-B



NRJ-WB (washer)



- Quality Design



## Slim Jacks



NRJ4HH-1

NRJ6HF-1

NRJ6HM-1-AU

NRJ-NUT-B

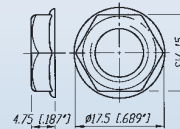
NRJ-NUT-MK

NRJ-NUT-MS

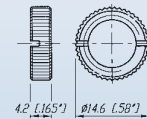
NRJ-NUT-MN  
(Metal Nose only)

- High board packing densities
- Nose type in
  - half thread
  - fully threaded
  - metal
- Meeting the requirements of EMC rules through efficient chassis grounding system
- Retention spring ensures optimum grip on inserted plugs, avoiding the chance of lost connection
- All Slim line jacks have PCB horizontal mount pins
- Mounting nuts in different versions available - must be ordered separately

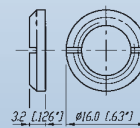
NRJ-NUT-B



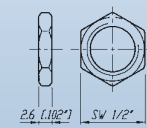
NRJ-NUT-MK



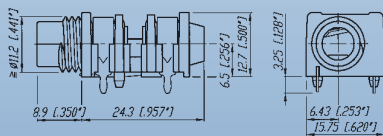
NRJ-NUT-MS



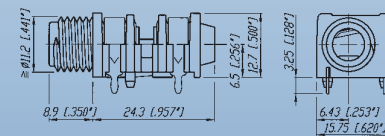
NRJ-NUT-MN  
(Metal Nose only)



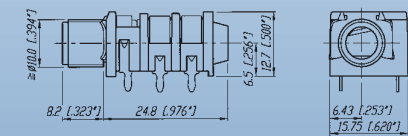
NRJ4HH-1



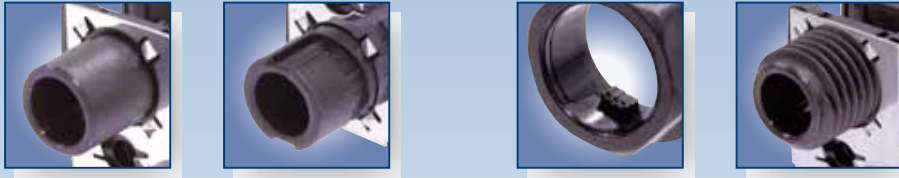
NRJ4HF-1



NRJ6HM-1



# PCB Mount Stacking Jacks



## Stacking Jacks



NSJ8HC



NSJ12HL



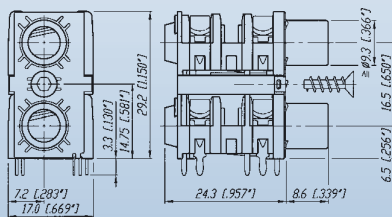
NSJ12HH-1



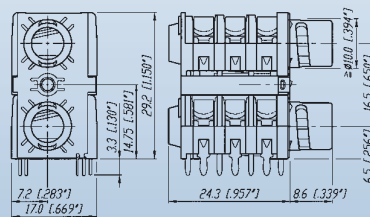
NSJ12HF-1

- Mono and stereo dual slim jack socket for PCB mounting with switch contacts
- Mounting method by either two quick fix or threaded nuts or one single center screw
- Highest board packing density as two jacks are in a single footprint, fit in 1 RU
- Version in fully and half threaded nose, full nose and quick-fit

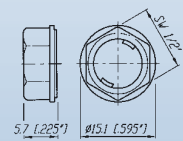
NSJ8HC



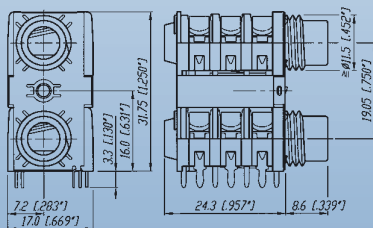
NSJ12HL



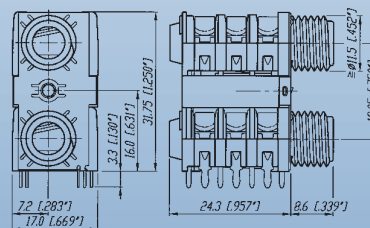
Quick fix nut



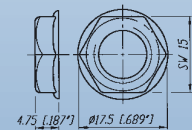
NSJ12HH-1



NSJ12HF-1



NRJ-NUT-B



- Quality Design

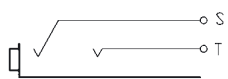


# Technical Data

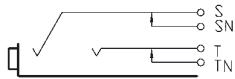
Specifications	Vertical Jack	Locking Cable & Chassis Jack	M Jack	Slim Jack	Stacking Jack
<b>Electrical</b>					
Contact resistance	- initial: < 10 mΩ	< 6 mΩ	< 15 mΩ	< 10 mΩ	-
	- Top row: -	-	-	-	< 15 mΩ
	- Bottom row: -	-	-	-	< 10 mΩ
Switch contact resistance:	- for silver: -	-	< 30 mΩ	< 25 mΩ	-
	- for gold: < 15 mΩ	-	-	< 10 mΩ	-
	- Top row: -	-	-	-	< 15 mΩ
	- Bottom row: -	-	-	-	< 10 mΩ
Insulation resistance:	≥ 1GΩ @ 500 V dc	●	●	●	●
Dielectric strength	1 kV dc	●	●	●	●
Rated current:	3 A	10 A	3 A	3 A	3 A
Rated switch contact current:	0.25 A @ 12 V	N/A	0.5 A @ 50 V	0.5 A @ 50 V	0.5 A @ 50 V
<b>Mechanical</b>					
Lifetime	> 10'000 cycles	●	●	●	●
Insertion / withdrawal force:	< 10 N / > 8 N	< 20 N / < 20N	< 20 N / > 10 N	< 20 N / > 10 N	< 20 N / > 10 N
Cap opening torque:	25 N cm / 9.84 N in	-	-	-	-
Locking force:	-	> 80 N	-	-	-
Wire size:	-	1 mm <sup>2</sup> / 18 AWG <sup>Ⓟ</sup>	-	-	-
Cable O.D. (FC6 only)	-	3.5 - 8.0 mm	-	-	-
Solderability complies with IEC 68-2-20:	●	●	●	●	●
Standard Compatibility:					
EIA RS 453 + IEC 60603-11	NJ*FD	●	●	●	●
B-GAUGE BPO 316, MIL-J-641/3	NJ*TB	-	-	-	-
Panel thickness:	1.2 - 1.5 mm [0.047 - 0.06"]	-	-	-	-
- Full nose type:	-	-	< 3.0 mm	< 3.0 mm	-
- Half nose type:	-	-	< 1.0 mm	< 1.0 mm	-
- Chrome nose:	-	-	< 4.7 mm	-	-
- NSJ*HL:	-	-	-	-	1.0 - 1.6 mm
- NSJ*HC:	-	-	-	-	> 1.0 mm
<b>Material</b>					
Shell / Handle:	PA 6.6 30% GR	ZnAl4Cu1 Ni plated or black coated	PA 6.6 15% GR	PA 6 15% GR	PA 6 15% GR
- FPGP:	-	PA 6.6 30% GR	-	-	-
Insulation:	-	PA 6.6 30% GR	-	-	-
Contacts:	CuSn6	CuBe2/CuZn37 (ground)	Ni-Silver	CuSn6	CuSn6
Contact surface:	0.2 μm Au	2 μm Ag	-	gal 2 μm Ag / 0.2 μm Au	gal 2 μm Ag
Cap / Nut / Washer:	POM	-	PA 6.6 15% GR	PA 6.6 15% GR	PA 6.6 15% GR
Ring Nut:	-	-	-	Brass (Ni plated)	Brass (Ni plated)
Chuck:	-	POM	-	-	-
Bushing:	-	PA 6.6 15% GR + PUR	-	-	-
Temperature range:	-25°C to +70°C	●	●	●	●
Ⓟ... max. for soldering tag					

## Circuits:

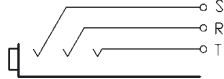
Mono unswitched



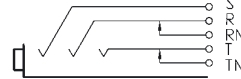
Mono switched



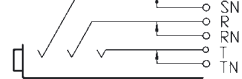
Stereo unswitched



2x switching (normalling) Stereo



3x switching (normalling) Stereo



Specifications are available

# Ordering Information

Part Number	Shell	Contacts	Terminations	Standards Compatibility	Remarks
-------------	-------	----------	--------------	-------------------------	---------

## Slim Jack

### PCB Mount Sockets - Switched

NRJ3HF-1	Black/Plastic	Silver	Horizontal PCB soldering	IEC 60603-11/EIA RS 453	Mono, full threaded nose, chassis ground contact
NRJ4HF	•	•	•	•	Mono, full threaded nose
NRJ4HF-1	•	•	•	•	Mono, full threaded nose, chassis ground contact
NRJ6HF	•	•	•	•	Stereo, full threaded nose
NRJ6HF-1	•	•	•	•	Stereo, full threaded nose, chassis ground contact
NRJ4HH	•	•	•	•	Mono, half threaded nose
NRJ4HH-1	•	•	•	•	Mono, half threaded nose, chassis ground contact
NRJ6HH	•	•	•	•	Stereo, half threaded nose
NRJ6HH-1	•	•	•	•	Stereo, half threaded nose, chassis ground contact
NRJ6HF-AU	•	Gold	•	•	Stereo, full threaded nose, gold plated contacts
NRJ6HF-1-AU	•	Gold	•	•	Stereo, full threaded nose, chassis ground contact, gold plated contacts
NRJ6HH-AU	•	•	•	•	Stereo, half threaded nose, gold plated contacts
NRJ-NUT-B	•	-	-	-	Hexagonal black plastic nut
NRJ-NUT-R	Red/Plastic	-	-	-	Hexagonal red plastic nut
NRJ-NUT-MK	Metal/Ni plated	-	-	-	Metal ring nut, knurled
NRJ-NUT-MS	Metal/Ni plated	-	-	-	Metal ring nut

### PCB Mount Sockets - Switched with Metal Nose

NRJ4HM-1	Black/Plastic	Silver	Horizontal PCB soldering	IEC 60603-11/EIA RS 453	Mono, metal threaded nose
NRJ4HM-1-AU	•	Gold	•	•	Mono, metal threaded nose, gold plated contacts
NRJ6HM-1	•	Silver	•	•	Stereo, metal threaded nose
NRJ6HM-1-AU	•	Gold	•	•	Stereo, metal threaded nose, gold plated contacts
NRJ-NUT-MN	Metal	-	-	-	Hexagonal metal nut (for metal nose jack only)

## Stacking Jack

NSJ8HL	Polyamid PA 6.6 GR	Silver	Horizontal PCB soldering	IEC 60603-11/EIA RS 453	Mono, quick fix nose
NSJ12HL	•	•	•	•	Stereo, quick fix nose
NSJ8HC	•	•	•	•	Mono, full nose
NSJ12HC	•	•	•	•	Stereo, full nose
NSJ12HF-1	•	•	•	•	Full threaded nose
NSJ12HH-1	•	•	•	•	Half threaded nose
NSJ-NUT-B	Black/Plastic	-	-	-	Quick fix nut

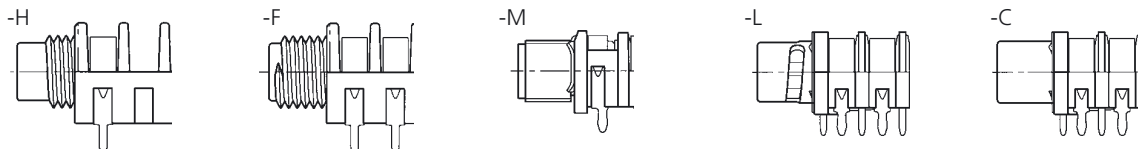
All Slim jacks are for PCB mount only.

Mounting nuts must be ordered separately, except for Stacking Jack type NSJ8HL and NSJ12HL.

### Ordering Key:

NRJ*H	NEUTRIK Jack Horizontal	* number of contacts:
H	half threaded nose	2 mono unswitched
F	full threaded nose	4 mono switched
L	quick fix nose	6 stereo switched
M	metal threaded nose	8 mono stacking jack
C	plane nose	12 stereo stacking jack
-1	chassis ground contact	

Nose:



o n t h e W e b - w w w . n e u t r i k . c o m

# Ordering Information

Part Number	Shell	Contacts	Terminations	Standards Compatibility	Remarks
-------------	-------	----------	--------------	-------------------------	---------

## 1/4" Locking Jack

NJ3FC6-BAG	Black	Silver	Wire soldering	IEC 60603-11/EIA RS 453	Cable Jack
NJ3FP6C	Nickel	●	●	●	Chassis Jack
NJ3FP6C-B	Black	Gold	●	●	●
NJ3FP6C-BAG	Black	Silver	●	●	●
NJ3FP6F-P	Nickel	●	●	●	●
NJ3FP6P-BAG	Black/Plastic	●	●	●	Plastic Chassis

## 1/4" Vertical Jack

NJ2FD-V	Black/Plastic	Gold	Vertical PCB soldering	IEC 60603-11/EIA RS 453	Non-switching Mono Jack (T/S)
NJ3FD-V	●	●	●	●	Non-switching Stereo Jack (T/R/S)
NJ5FD-V	●	●	●	●	2 x switching (normalling) Stereo jack (T/TN/R/RN/S)
NJ6FD-V	●	●	●	●	3 x switching (normalling) Stereo jack (T/TN/R/RN/S/SN)
NJ5TB-V	●	●	●	B-Gauge BPO316 Mil-J-641/3	2 x switching (normalling) Stereo jack (T/TN/R/RN/S)
NJ6TB-V	●	●	●	B-Gauge BPO316 Mil-J-641/3	3 x switching (normalling) Stereo jack (T/TN/R/RN/S/SN)

## M Jack

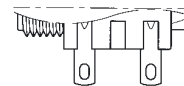
NMJ2HF-S	Black/Plastic	Silver	Horizontal PCB soldering	IEC 60603-11/EIA RS 453	Mono, unswitched, full threaded nose, solder tags
NMJ3HF-S	●	●	●	●	Mono, switched, full threaded nose, solder tags
NMJ4HF-S	●	●	●	●	Mono, switched, full threaded nose, solder tags
NMJ2HC-S	●	●	●	●	Mono, unswitched, Chrome ferrule, solder tags
NMJ4HC-S	●	●	●	●	Mono, switched, Chrome ferrule, solder tags
NMJ4HFD2	●	●	●	●	Mono, switched, full threaded nose, PCB mount
NMJ4HFD3	●	●	●	●	Mono, switched, full threaded nose, offset PCB mount
NMJ4HCD2	●	●	●	●	Mono, switched, Chrome ferrule, PCB mount,
NMJ4HHD2	●	●	●	●	Mono, switched, half threaded nose, PCB mount, without nut and washer
NMJ6HF-S	●	●	●	●	Stereo, switched, full threaded nose, solder tags
NMJ6HC-S	●	●	●	●	Stereo, switched, Chrome ferrule, solder tags
NMJ6HCD2	●	●	●	●	Stereo, switched, Chrome ferrule, solder tags
NMJ6HHD2	●	●	●	●	Stereo, switched, half threaded nose, PCB mount, without nut and washer
NMJ6HFD2	●	●	●	●	Stereo, switched, full threaded nose, PCB mount
NMJ6HFD3	●	●	●	●	Stereo, switched, full threaded nose, offset PCB mount
NMJ6HCD3	●	●	●	●	Stereo, switched, Chrome ferrule, offset PCB mount
NMJ6HFD4	●	●	●	●	Stereo, switched, full threaded nose, Rear drop PCB mount

Full threaded and Chrome nose M-Jacks are supplied with fixing nut and washers. Mounting hardware for half threaded nose must be ordered separately.

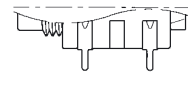
### Ordering Key:

NMJ*H	NEUTRIK M Jack Horizontal	* number of contacts:
H	half threaded nose	2 mono unswitched
F	fully threaded nose	3 stereo unswitched
C	chrome nose	4 mono switched
-S	solder tag	5 stereo switched (T/S)
D2	PCB pins 02	6 stereo switched (T/R/S)
D3	PCB pins 03	
D4	PCB pins 04	

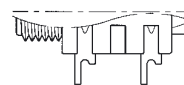
-S



-D2



-D3



-D4

