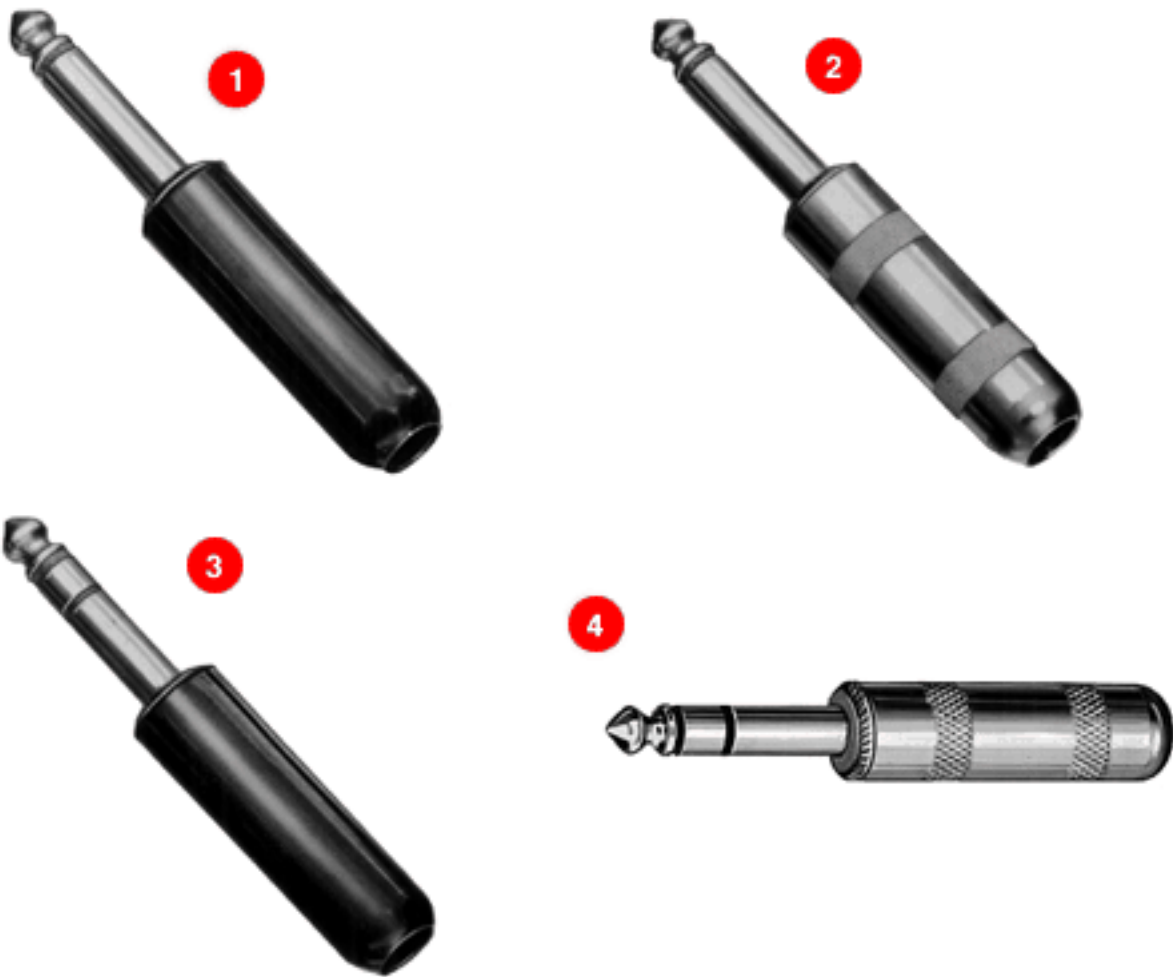


Switchcraft®

[Previous Page](#) | [Return to Index](#) | [Next Page](#)



1/4" COMMERCIAL PHONE PLUGS

- 1. 2-CONDUCTOR LITTEL-PLUG® PLUGS Numbers 240, 245, 250, 255 (typical)**
- 2. 2-CONDUCTOR LITTEL-PLUG® PLUGS Numbers 280, 281, 285, 285L, 288 (typical)**
- 3. 3-CONDUCTOR LITTEL-PLUG® PLUGS Number 260 (typical)**

4. 3-CONDUCTOR LITTEL-PLUG® PLUGS Number 290 (typical)

[click here to download a schematic drawing](#)

(you will need to have Adobe Acrobat installed on your system to do this)



FEATURES

- * Heavy duty machined copper alloy handle (shielded versions), tip and body for unsurpassed ruggedness.
- * Bright nickel plating on exterior surfaces will not chip or corrode.
- * Solder terminals are tin electroplated for ease of soldering.
- * One-piece tip rod staked into tip terminal ensures electrical continuity
- * Heavy duty cable clamp provides secure strain relief.
- * The proven industry standard phone plug for audio applications. Beware of imitations!
- * Shielded handle versions recommended for applications where electromagnetic interference and physical abuse may occur.

SPECIFICATIONS

Sleeve, Tip and Body: Nickel-plated copper alloy.

Terminals: Solder lug - Tinned copper alloy.

Screw: Tin-plated (screws size 3-48).

Handles: Molded - black or red plastic. Shielded - machined

Nickel-plated copper alloy. Tubular insulator inside handle.

2-CONDUCTOR PLUGS PART NUMBERS

Part Number	Terminals	Typical Mating Jack ²	Handle*	Handle Part Number
240	Screw ³	11	Black	M1002
ý C240	Screw ³ with Cable Clamp		Black	
245	Screw ³		Red	M1003
ý	Screw ³ with Cable Clamp		Red	
250	Solder Lug & Cable Clamp		Black	M1002
255			Red	ý M1003
270	Screw ³		Shielded	Handle: T10581 Insulator: A10071
ý C270	Screw ³ with Cable Clamp		Shielded	
280	Solder Lug & Cable Clamp		Shielded ¹	
281			Shielded ⁴	
285			Shielded ^{4,5}	
288			Shielded ¹	
285L			Shielded ^{4,5,6}	T2323
2P1298	Solder Lug & Cable Clamp		Without Handle	
ý 2P1495	Screw ³			

3-CONDUCTOR PLUGS PART NUMBERS

260	Screw	12B	Black	M1002
267	Solder Lug & Cable Clamp		Black	M1002
269			Red	ý
290	Screw ³		Shielded	Handle: T10581 Insulator: A10071
297	Solder Lug & Cable Clamp Solder Lug & Cable Clamp		Shielded	

2P1248	Solder Lug & Cable Clamp Solder Lug & Cable Clamp		Without Handle
<p>* Additional plug handle colors available (P2714) green, (M1111) blue, (M1235) gray. Fits any plug on which Numbers M1002, M1003 are standard.</p> <p>¹ Wide insulator between tip and sleeve allows use of 2-conductor plug in 3-conductor jack without shorting.</p> <p>² Switchcraft Part Numbers. See Mating Jacks Section.</p> <p>³ Replacement Screw Part Number P10292 (2-conductor plugs require 2 screws; 3-conductor plugs require 3 screws).</p> <p>⁴ Unassembled.</p> <p>⁵ Larger cable clamp to accommodate larger diameter cables.</p> <p>⁶ Handle has .375 inch (9.53mm) diameter hole to accommodate larger diameter cables.</p> <p>‡ Special order only. Contact Switchcraft.</p>			

Switchcraft® commercial 2- and 3-conductor phone plugs are available with a logo handle in addition to the plain handle. The Switchcraft name appears prominently on the shielded handle so the plugs can no longer be easily confused with "copycat" plugs found on the market today. Knurling on handles provides a convenient, positive fingertip grip for connect and disconnect.

Plugs are available in the following popular variations:

1. 1/4 inch diameter finger, 2-conductors.
2. 1/4 inch diameter finger, 3-conductors.
3. .206 inch diameter finger, 2-conductors.

Plug handles accept cable up to .290 inch diameter.

SPECIFICATIONS

Sleeve: Tip and Body: Plated copper alloy.

Terminals: Solder lug: Copper alloy, electro-tinned;
Screw: Tin-plated (screw size #3-48).

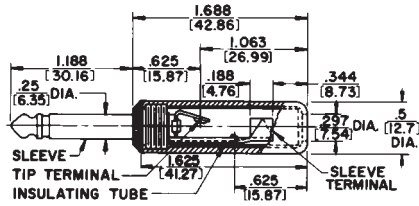
Handles: Nickel-plated zinc (tubular insulator inside handle).

Logo Handle	Plain Handle	Description	Typical Mating Jack¹
2-CONDUCTORS			
570	270	Screw terminals. Shielded handle.	11
580	280	Solder lug & cable clamp. Shielded handle.	
581	281	Solder lug & cable clamp. Shielded handle. Unassembled.	
585	285	Solder lug & cable clamp. Shielded handle. Unassembled. Larger cable clamp accommodates larger cables.	
588	288	Solder lug & cable clamp. Shielded handle. Wide insulator between tip and sleeve makes possible use as a 2-conductor plug in 3-conductor jack without shorting.	
S580	S280	Solder lug & cable clamp. Shielded handle. Plug finger has .206 inch diameter.	S11
3-CONDUCTORS			
590	290	Screw terminals. Shielded handle.	12B
597	297	Solder lug & cable clamp. Shielded handle.	
598	298	Solder lug & cable clamp. Shielded handle. Locking feature.	12B, 133
¹ Other mating plugs are available. ² Replacement screw, Part Number P10292 (2-conductor requires 2 screws; 3-conductor requires 3 screws).			

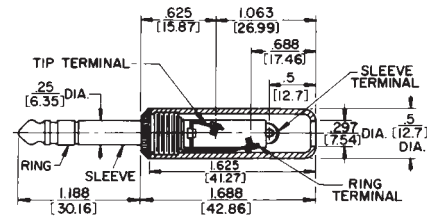
[Previous Page](#) | [Return to Index](#) | [Next Page](#)

To search a category please click on the corresponding icon:

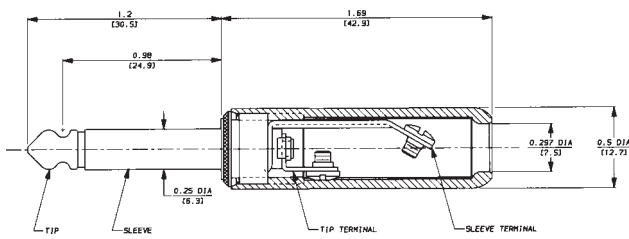
1/4" COMMERCIAL PHONE PLUGS



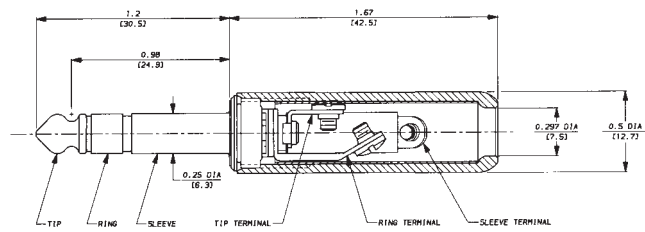
No. 280 typical — shown with solder lug terminals, cord clamp and shielded handle.



No. 260 typical — shown with screw-type terminals and plastic handle.



No. 570 (Typical)



No. 590 (Typical)

DIMENSIONS ARE FOR REFERENCE ONLY $\frac{\text{Inch}}{\text{(mm)}}$

NOTE: Contact your Switchcraft Representative for price and delivery.