

Switchcraft®

[Previous Page](#) | [Return to Index](#) | [Next Page](#)



1/4" RIGHT-ANGLE PHONE JACKS

SERIES - RA and RN

1. Series RN110
2. Series RA

[click here to download a schematic drawing](#)

(you will need to have Adobe Acrobat installed on your system to do this)



SERIES - RA and RNSERIES RA - 2- and 3-conductor RA Jax® are designed with split terminals which provide two distinct advantages over contemporary jacks:

1. Positive retention of jack in PC board during wave soldering.
2. Split terminal permits additional solder flow paths up the terminal for better mechanical/electrical connection

Tip spring design facilitates positive retention of differing mating plug tip shapes (industry standard and others).

SERIES RN - Right-angle Hi-D Jax® permits space-saving mounting on PC boards. Available in 2- and 3-conductor types with or without shunt circuits, which can mate with .25 inch diameter COMMERCIAL or TELEPHONE/MIL plug fingers. Right-angle jack permits tip of mating plug to be inserted parallel with PC board. Can be mounted on PC boards or combined PC board and panel/chassis.

Mounted through .375 inch diameter holes (locknut and washer supplied) in panels and chassis up to .141 inches thick. Minimum mounting centers are .625 inches. If insulated mount is desired, mounting with flat, non-conductive washer (not supplied) is recommended.

PC terminals mount on boards up to .125 inches thick, and hand dip or wave soldering, is recommended. Three separate standoffs fit through board to provide stable mounting. Threaded bushing permits optional fastening to panel or chassis.

SERIES RN110 - 2- and 3-conductor right-angle types mount in PC boards or panel/chassis. Bushing is .278 inches long.

SPECIFICATIONS

Housing: Thermoplastic.

Bushing: Integral with housing.

Springs: Copper alloy, silver-plated (also available with

selectively gold-plated contact points and selectively tin-plated terminals).

Contacts: Integral, part of shunt springs.

NOTE: Specifications for Mechanical, Electrical and Environmental are the same for Hi-D[®] Jax. (page 87)

1/4" RA/SN Jack Part Numbering System		
Series	Bushing Option	Circuitry¹
1/4" Right-Angle PC mount jack with bifurcated PC terminals.	11 - (RN only) Insulated, threaded bushing, .375" Height Off Board.	1 - I
1/4" Right-Angle PC mount jack Housing snaps to PC board.	37A - (SN only) Insulated, nonthreaded bushing, .375" Height Off Board.	2A - III
1/4" Right-Angle PC mount jack that accepts commercial or Mil plugs	49A - (SN only) Insulated, nonthreaded bushing, .492" Height Off Board.	2B - IV
	49B - (RA or SN only) Insulated, threaded bushing, .492" Height Off Board.	3B - VII *
	49C - (RA or SN only) Metal, threaded bushing, .492" Height Off Board.	3F - XXVIII *
	70B - (RA or SN only) Insulated, threaded bushing, .708" Height Off Board.	4B - XII
	70C - (RA or SN only) Metal, threaded bushing, .708" Height Off Board.	

* - These circuits are only available in RN11 series jacks.
¹ see pages 65 and 66

ORDERING INFORMATION			
SERIES SN Part Numbers	Description	Jack² Schematic	Typical Mating Plug³
SN37A11 ¹	2-cond., open circuit	I	250
SN37A12A ¹	2-cond., single closed circuit	III	
SN37A12B ¹	3-cond., double open circuit	IV	

¹ Series SN37A supplied with Part Number P2993 cover. Series SN49A and SN49B can be supplied with Part Number P2994 cover on special order. Contact Switchcraft.

SERIES RA Part Numbers	Description	Jack² Schematic	Typical Mating Plug³
RA49B11	2-cond., open circuit	I	250
RA49B12A	2-cond., single closed circuit	III	
RA49B12B	3-cond., double open circuit	IV	267
RA49B14B	3-cond., double closed circuit	XII	
RA49C11	2-cond., open circuit	I	250
RA49C12A	2-cond., single closed circuit	III	
RA49C12B	3-cond., double open circuit	IV	267
RA49C14B	3-cond., double closed	XII	
RA70B11	circuit2-cond., open circuit	I	250
RA70B12A	2-cond., single closed circuit	III	
RA70B12B	3-cond., double open circuit	IV	267
RA70B14B	3-cond., double closed	XII	
RA70C11	circuit2-cond., open circuit	I	250
RA70C12A	2-cond., single closed circuit	III	
RA70C12B	3-cond., double open circuit	IV	267
RA70C14B	3-cond., double closed circuit	XII	
SERIES RN Part Numbers			
RN111PC	2-cond., single open circuit	I	250
RN112APC	2-cond., single closed circuit	III	250
RN112BPC	3-cond., double open circuit	IV	267
RN113BPC	3-cond., tip closed, ring open	VII	267
ý RN113FPC	3-cond., tip open, ring closed	XXVIII	267
RN114BPC	3-cond., double closed circuit	XII	267

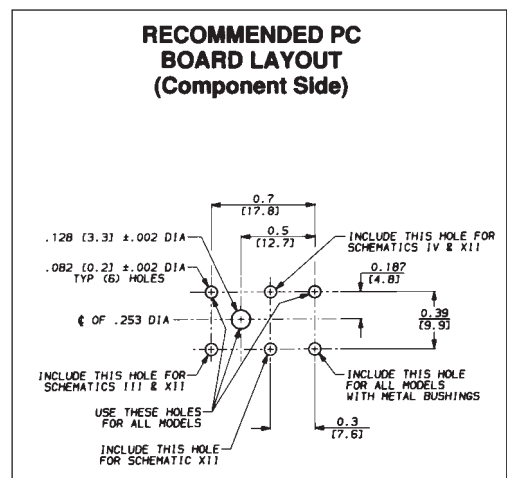
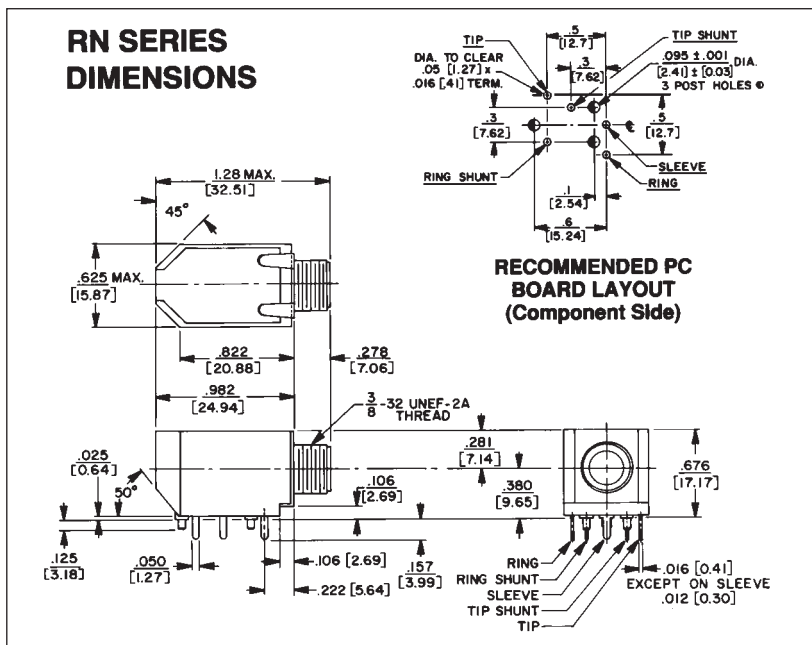
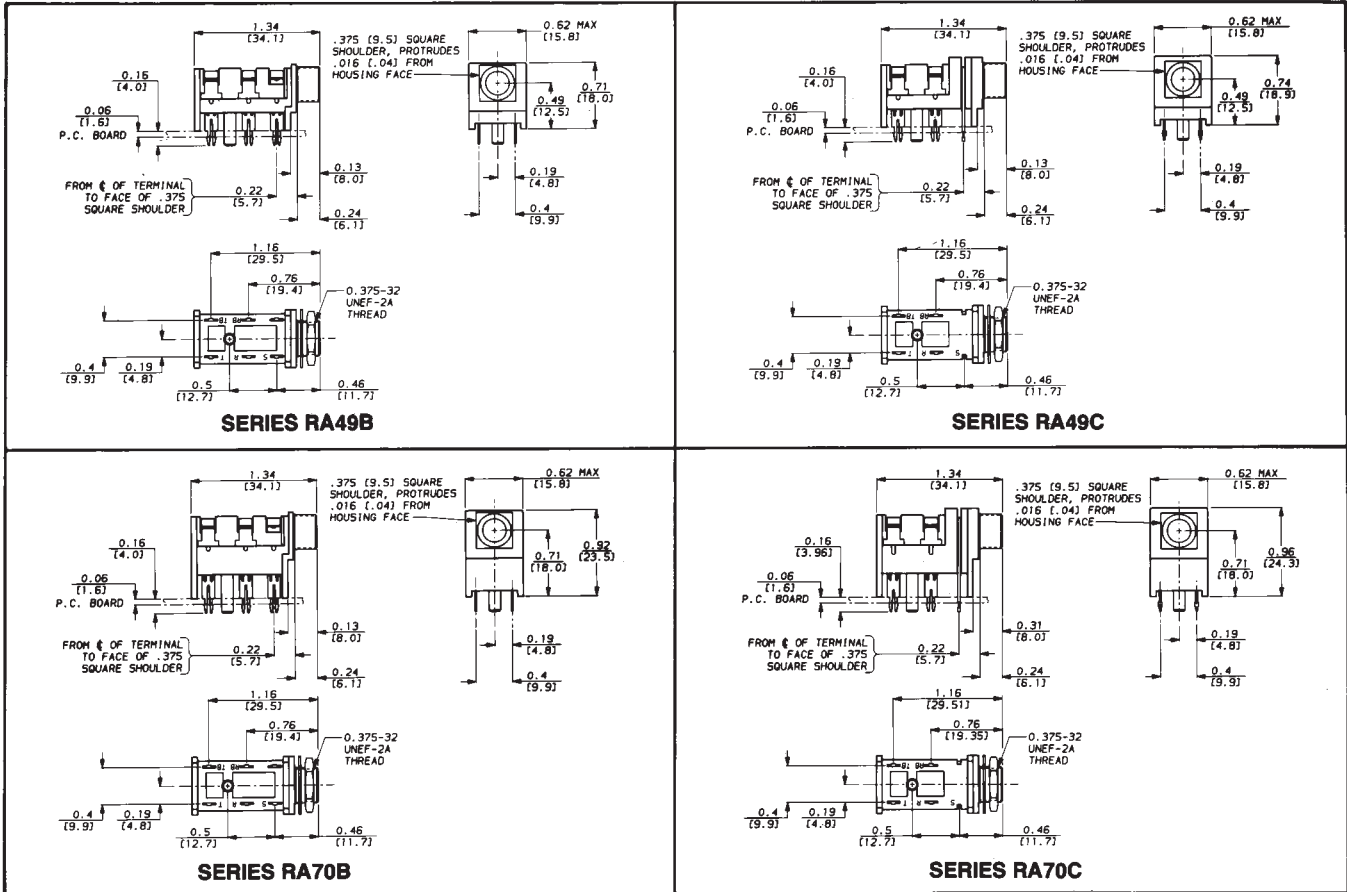
² See pages 65 and 66.

³ Other mating plugs are available.

ý Special order only. Contact Switchcraft.

1/4" RIGHT-ANGLE PHONE JACKS

SERIES RA and RN



DIMENSIONS ARE FOR REFERENCE ONLY Inch
(mm)

NOTE: Contact your Switchcraft Representative for price and delivery.