

Switchcraft®

[Previous Page](#) | [Return to Index](#) | [Next Page](#)



MIL-TYPE 1/4" PHONE PLUGS

- 1. 2-CONDUCTOR SERIES 420, 425**
- 2. 3-CONDUCTOR SERIES 482, 483**
- 3. 2-CONDUCTOR SERIES 430**
- 4. 3-CONDUCTOR SERIES 480 (.206")**
- 5. 2-CONDUCTOR SERIES 440, 445**
- 6. 3-CONDUCTOR SERIES 484 (.206")**

[click here to download a schematic drawing](#)

(you will need to have Adobe Acrobat installed on your system to do this)



FEATURES

Designed for high quality communication equipment to meet military requirements, This series features one-piece tip rod and one-piece sleeve and plug body, assembled together into a mold as inserts, providing a finished plug with complete continuity of thermoplastic insulation between tip rod and plug sleeve. Internal (invisible externally) interlock mechanically engages the metal and plastic components providing a realistic lock to prevent parts shifting. Design and material in accordance with MIL-P-642(A), MIL part number molded or stamped on handle, manufacturer's trademark (as required by MIL specification) appears on plug body.

SPECIFICATIONS

Tip Rod, Body and Screws: Copper alloy, natural finish.

Terminals: Tinned copper alloy.

Insulation: Thermoplastic, per MIL-P-22985, Type II, Class 1.

Handles: Thermoplastic, Type 6, per MIL-M-20693, Type II. Shielded; machined from copper alloy, nickel-plated.

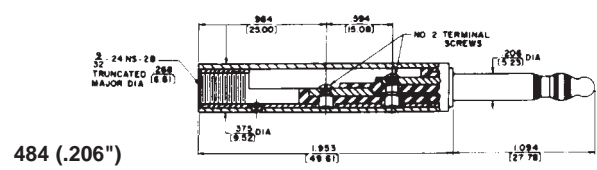
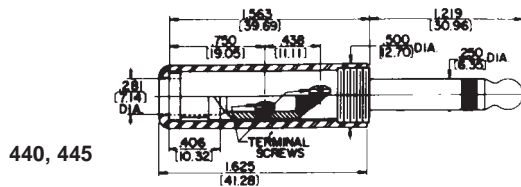
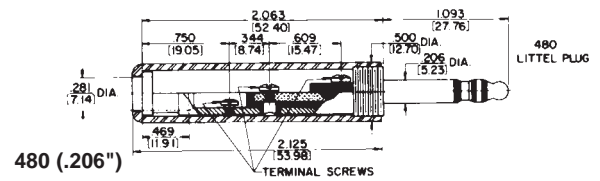
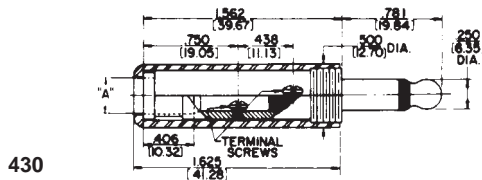
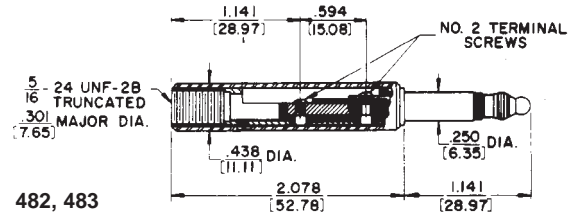
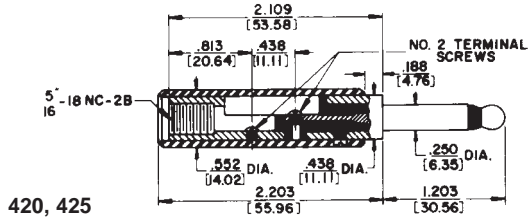
STRAIN RELIEF CLAMP

For MIL-type Littell-Plug phone plugs. **P2380** conforms to Specification SC-A-7674-F - supplied with Plug Numbers 430, 440, 445 and 470. **P2381** meets Specification MS-35762 - supplied with Plug Number 480 and Extension-Jax® phone jack, Number 820.

[Previous Page](#) | [Return to Index](#) | [Next Page](#)

To search a category please click on the corresponding icon:

MIL-TYPE 1/4" PHONE PLUGS



DIMENSIONS ARE FOR REFERENCE ONLY $\frac{\text{Inch}}{\text{(mm)}}$

NOTE: Contact your Switchcraft Representative for price and delivery.