

IEC appliance inlet C14, screw-on mounting, front/rear side, solder/quick connect terminal



6100-3



Description

- Panel Mount:
- Screw-on from front or rear-side
- Inlet, Pin temperature 70 °C, Protection class I
- Solder terminals or quick connect terminals
- Alternative: protection class II version [6102-3](#)

Other versions on request

- Types for rivet mounting available upon request

Weblinks

[Approvals](#), [RoHS](#), [CHINA-RoHS](#), [e-Store](#), [SCHURTER-Stock-Check](#), [Distributor-Stock-Check](#)

Technical Data

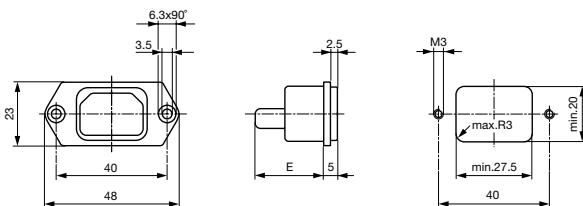
Ratings IEC	10A / 250VAC; Hz 50
Ratings UL/CSA	15A / 250VAC; 60Hz
Dielectric Strength	> 2kVAC between L-N > 2kVAC between L/N-PE (1 min/50Hz)
Allowable Operation Temp.	-25 °C to 70 °C
Degree of Protection	from front side IP 40 acc. to IEC 60529
Protection Class	Suitable for appliances with protection class I acc. to IEC 61140
Terminal	Solder terminals or quick connect terminals
Panel Thickness s	Screw-on: max 8 mm Mounting screw torque max 0.5 Nm
Material: Housing	Thermoplastic, black, UL 94V-0

Appliance-Inlet /-Outlet	C14 acc. to IEC/EN 60320-1, UL 498, CSA C22.2 no. 42 (for cold condition) pin-temperature 70 °C, 10A, Protection class I
--------------------------	-----------------------------------------------------------------------------------------------------------------------------

Dimensions

6100-3 (6102-3)

Length |-----| 48 mm



E: Solder terminals 20.5 mm
E: Quick connect terminals 23.5 mm

Variants

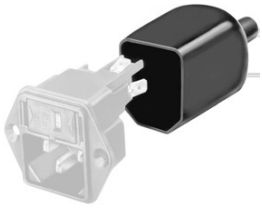
[Distributor-Stock-Check](#) | [SCHURTER-Stock-Check](#) | [e-Store](#)

Type	Protection Class	Panel mounting	Panel Thickness s [mm]	Terminal	Order Number
6100-3	I	Screw-on	-	Quick connect terminals 4.8 x 0.8 mm	6100.3200
6100-3	I	Screw-on	-	Quick connect terminals 6.3 x 0.8 mm	6100.3300
6100-3	I	Screw-on	-	Solder terminals 3.5 x 0.8 mm	6100.3100

Packaging unit 50 Pcs

Accessory

Description



Assorted Covers
Rear Cover



Cord retaining kits
Cord retaining strain relieve