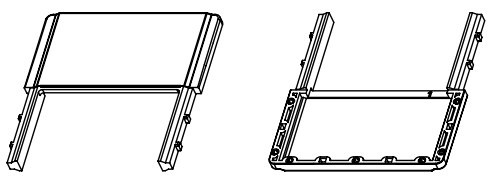
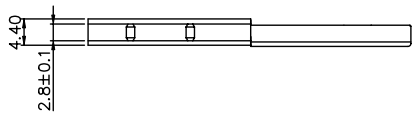
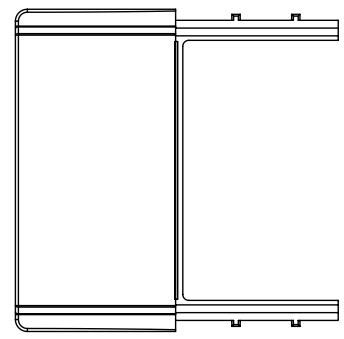
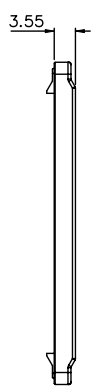
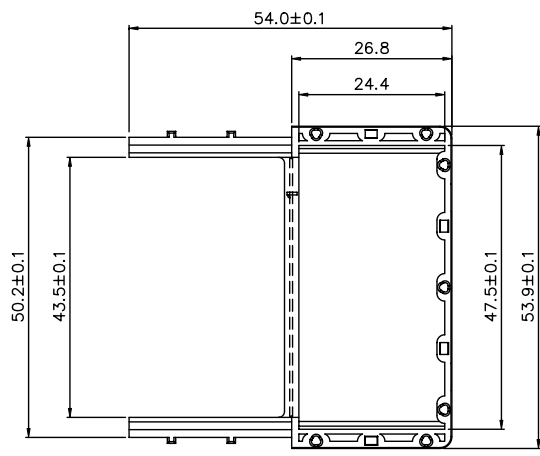


Tous droits strictement réservés. Reproduction ou communication a des tiers sans aucune forme quel que soit sans autorisation écrite du propriétaire. Droits de reproduction BERG ELECTRONICS by

All rights strictly reserved. Reproduction or issue to third parties in any form whatsoever is not permitted without written authority from the proprietor. Copyright BERG ELECTRONICS by

PRODUCT NUMBER	COLOR	PACKING METHOD
56405-001	OPAQUE BLACK	PACKING WITH BUBBLE BAG
56405-002	TRANSLUCENT GRAY	PACKING WITH BUBBLE BAG
56405-001T	OPAQUE BLACK	PACKING WITH TRAY
56405-002T	TRANSLUCENT GRAY	PACKING WITH TRAY



NOTES:  
 1. MATERIAL: POLYCARBONATE G.E. LEXAN 940.  
 2. REFER TO TA-667 FOR OVERALL ASSEMBLY VIEWS

mat'l code		tolerance unless otherwise specified		CUSTOMER	
rev.	ecn no.	dr	date	linear	COPY
A	T10334	WL	11/23/01	±0.3	projection
B	T20299	WL	10/07/02	±2°	title
C	T03-0245	WL	06/23/03		LOWER COVER
D	T04-0045	WL	02/02/04		product family PCMCIA
		dr	WENDY CHEN	06/09/01	code
		enrg	YUWEN CHU	06/09/01	size
		chr	YUWEN CHU	06/09/01	dwg no.
		appd	JENN TSAO	06/09/01	56405
sheet	revision	D		unit	
index	sheet	1		mm/inch	
				scale	
				A3	
					1 of 1

PDM: Rev:D STATUS Released Printed: Jul 14, 2009