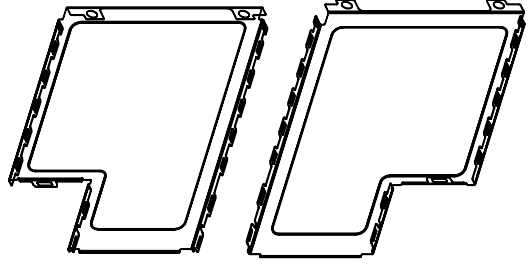
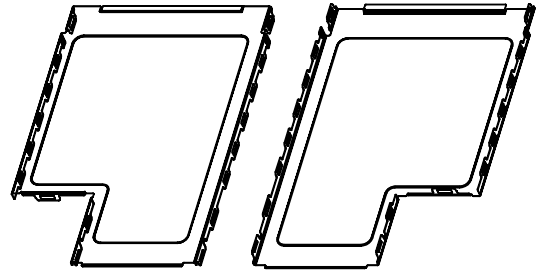
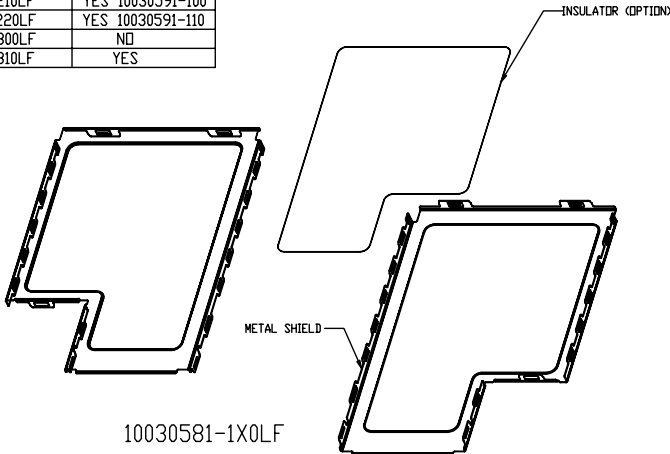


PRODUCT NO.	INSULATOR
10030581-100LF	NO
10030581-110LF	YES
10030581-200LF	NO
10030581-210LF	YES 10030591-100
10030581-220LF	YES 10030591-110
10030581-300LF	NO
10030581-310LF	YES



NOTES:  
 1. MATERIAL PROPERTIES:  
 METAL SHIELD : STAINLESS STEEL, SURFACE FINISH : MATTE.  
 INSULATOR : POLYESTER FILM WITH ADHESIVE, 3M 1350 OR EQUIVALENT.  
 2. PART NUMBER SCHEME:  
 10030581- X X 0 L F  
 X : RESERVED  
 INSULATOR  
 0 : NO  
 1 : STANDARD  
 SHIELD TYPE NO.  
 1 : STANDARD (CLOSE-END)  
 2 : EXTENDED (OPEN-END)  
 3 : CUSTOMIZED

3. PRODUCT PERFORMANCE PER SPEC. GS-12-292.  
 4. PACKAGING SPEC. PER GS-14-927.  
 5. THIS PRODUCT IS ROHS COMPLIANT, AND MEETS EUROPEAN UNION DIRECTIVES AND OTHER COUNTRY REGULATIONS AS PER GS-22-008.

rev	ecn no	dr	date
H	N07-0182	MSH	2007-08-08
D	T05-0228	D T	2005-10-18
E	T06-0015	D T	2006-01-16
F	T06-0057	D T	2006-04-17
G	T06-0144	D T	2006-08-02

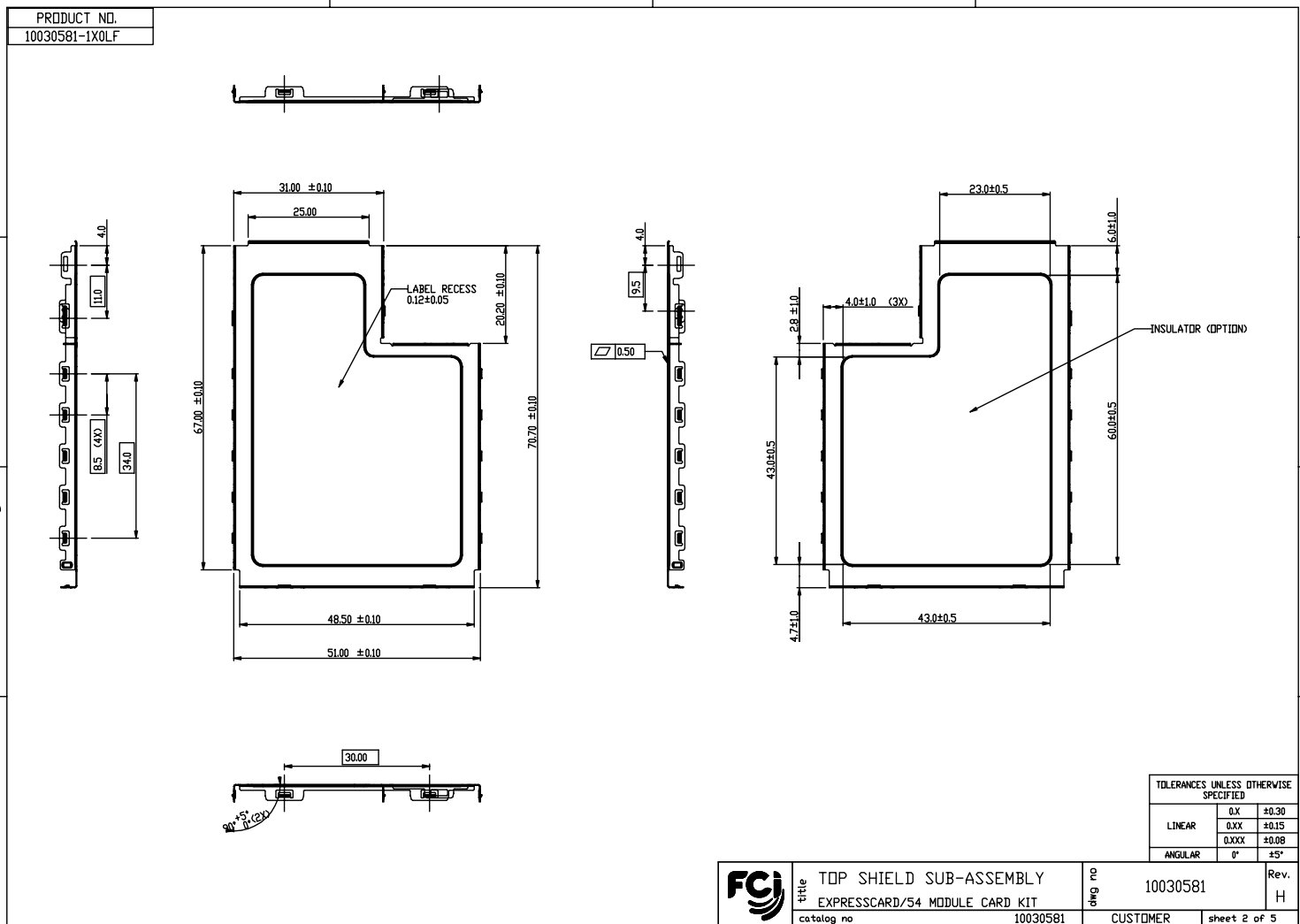
www.fciconnect.com		surface	tolerance std	projection	MM
		TOLERANCES UNLESS OTHERWISE SPECIFIED			
Dr	DAVID TENG	2004-10-04	ANGULAR	0.X	±0.30
Eng	DAVID TENG	2004-10-04	LINEAR	0.XX	±0.15
Chr	PAUL WANG	2004-10-04	0° ±2°	0.XXX	±0.08
Appr	JOSEPH HSIA	2004-10-04	Product family		Spec ref
FCI		title		size	Scale
TOP SHIELD SUB-ASSEMBLY		EXPRESSCARD/54 MODULE CARD KIT		A4	1.000
catalog no		10030581	CUSTOMER		sheet 1 of 5



Copyright FCI.



Copyright FCJ.

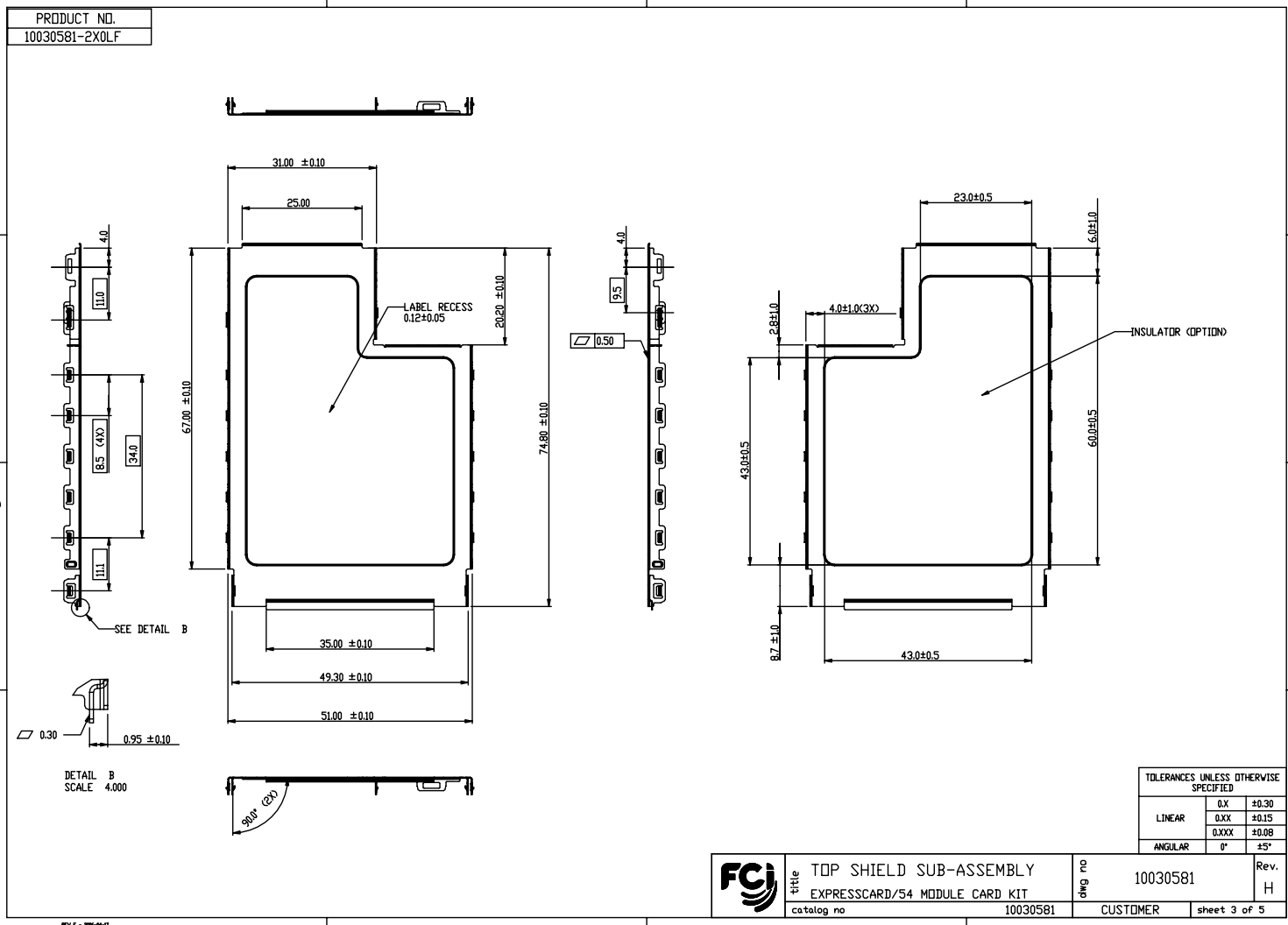


title	TOP SHIELD SUB-ASSEMBLY		Rev.	H
	EXPRESSCARD/54 MODULE CARD KIT		Rev.	
catalog no	10030581	CUSTOMER	sheet 2 of 5	
part no	10030581			

3 PDM: Rev:H STATUS Released 4 Printed: Oct 12, 2010



Copyright FCI.



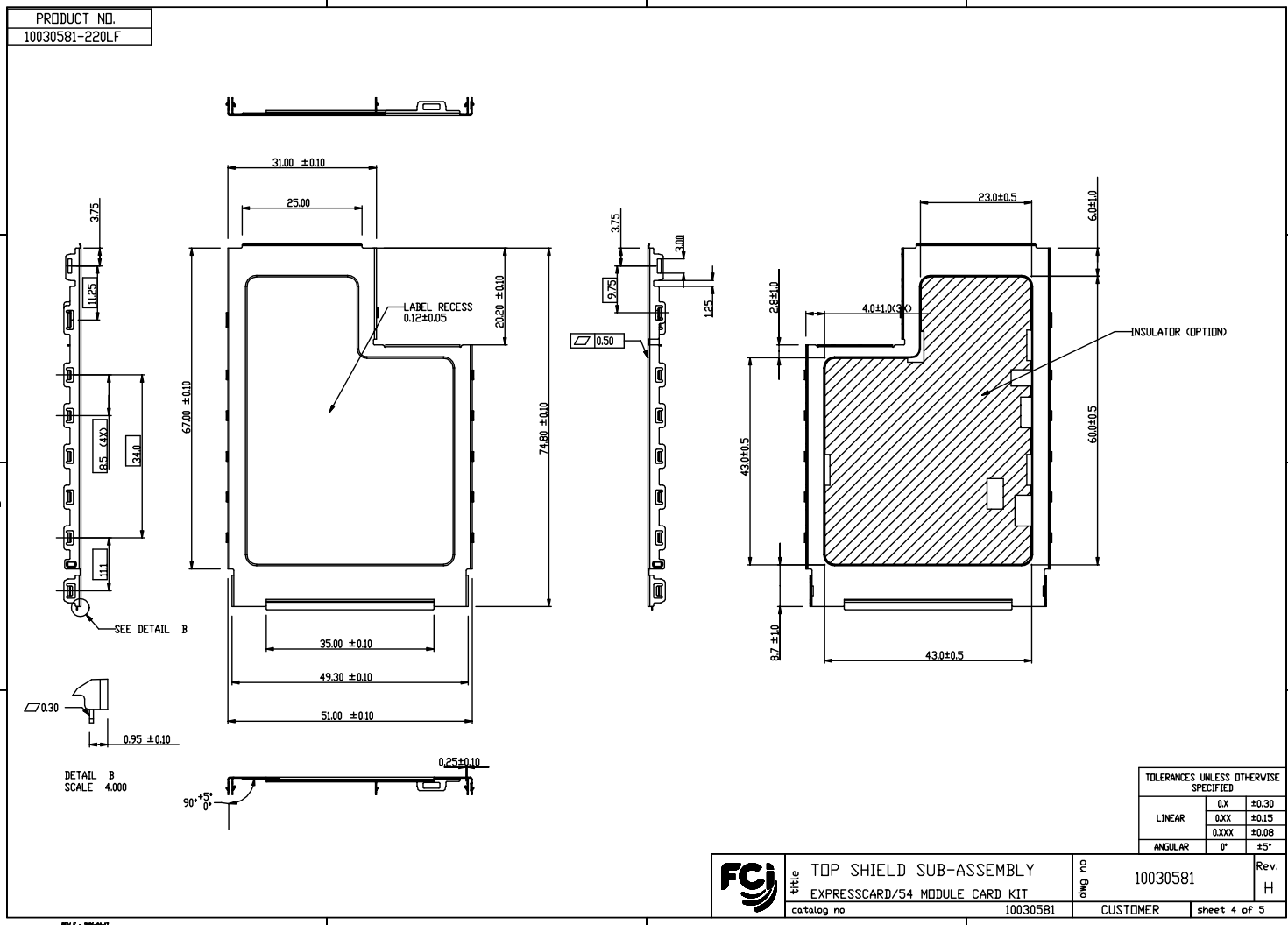
TOLERANCES UNLESS OTHERWISE SPECIFIED		
LINEAR	0.X	±0.30
	0.XX	±0.15
ANGULAR	0.XXX	±0.08
	0°	±5°

	title	TOP SHIELD SUB-ASSEMBLY	DWG NO	10030581	Rev.	H
	catalog no	10030581		CUSTOMER		sheet 3 of 5

3 PDM: Rev:H STATUS Released 4 Printed: Oct 12, 2010



Copyright FCJ



TOLERANCES UNLESS OTHERWISE SPECIFIED		
LINEAR	0.X	±0.30
	0.XX	±0.15
ANGULAR	0.XXX	±0.08
	0°	±5°

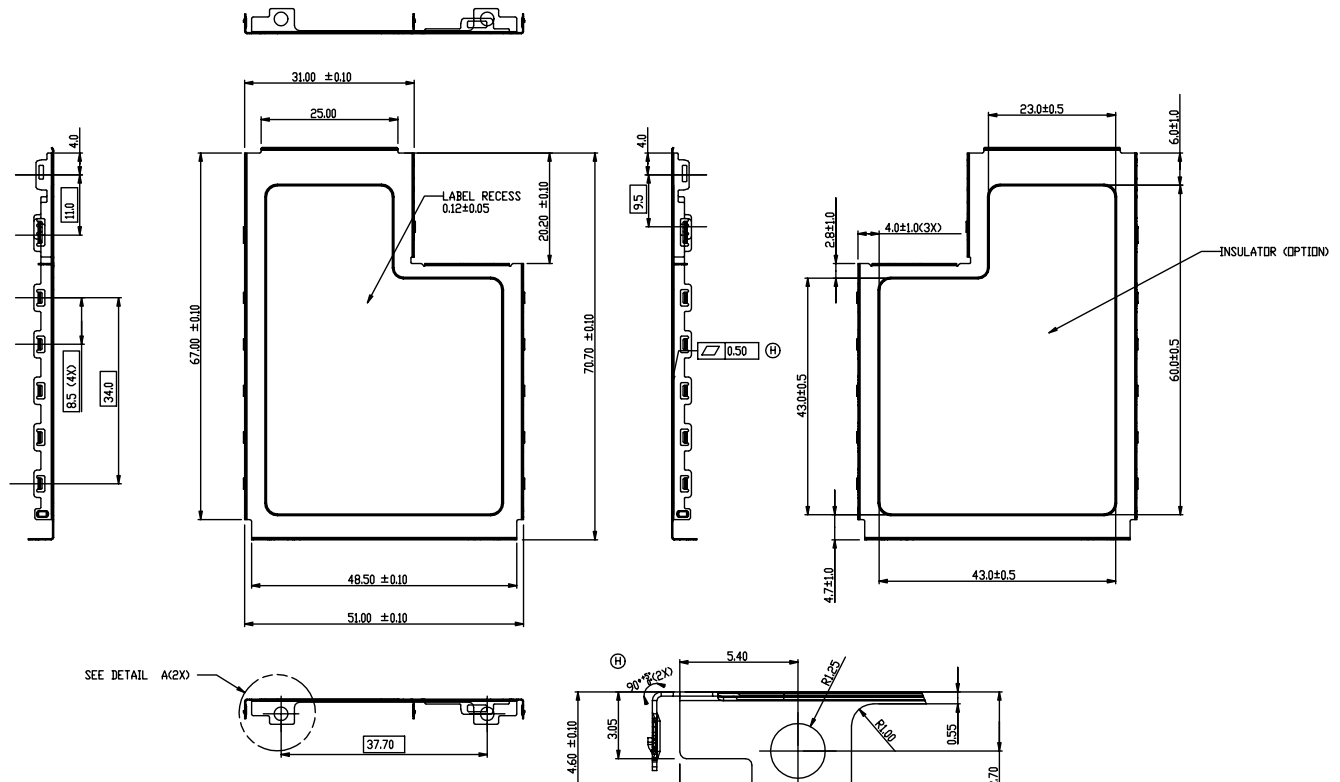
	title	TOP SHIELD SUB-ASSEMBLY	DWG NO	10030581	Rev.	H
	catalog no	10030581		CUSTOMER		sheet 4 of 5

3 PDM: Rev:H STATUS Released 4 Printed: Oct 12, 2010



Copyright FCJ.

PRODUCT NO.
10030581-3XOLF



TOLERANCES UNLESS OTHERWISE SPECIFIED		
LINEAR	0.X	±0.30
	0.XX	±0.15
	0.XXX	±0.08
ANGULAR	0°	±2°

	title	TOP SHIELD SUB-ASSEMBLY	part no	10030581	Rev.	H
	catalog no	EXPRESSCARD/54 MODULE CARD KIT	10030581	CUSTOMER	sheet 5 of 5	

3 PDM: Rev:H STATUS Released 4 Printed: Oct 12, 2010