

FCI CONFIDENTIAL

FCI

This document is the property of and includes CONFIDENTIAL and PROPRIETARY information of FCI. No part of the information shown on this document may be used in any way or disclosed to others without the written consent of FCI. Copyright © FCI

PRODUCT NO.	STAND OFF DIM "M"(mm)	HOLD DOWN
92791-XXXX		
001	0	NONE
001MLF	0	NONE
001LF	0	NONE
001H	0	YES
001HLF	0	YES
011	0	NONE
021	2	NONE
021LF	2	NONE
041	4	NONE
041LF	4	NONE
041H	4	YES
041HLF	4	YES
051	5	NONE
051M	5	NONE
051LF	5	NONE
051H	5	YES
051HLF	5	YES
052	5	NONE
053M	5	NONE
022LF	2.2	NONE
022	2.2	NONE
043LF	4.3	NONE
043	4.3	NONE

92791-XXXX

OPTIONAL HOLD DOWN
 OPTIONAL FOR TWO TYPE COVER PLATE (*S)
 LOW COST VERSION
 FOR LOWER OR UPPER DECK
 STAND OFF HEIGHT (DIM" M")
 MOUNT STYLE TO PCB

NONE : N 0
 H : YES(SEE FIGURE OF -XXXX)
 NONE *S*: 93328-001 (EXCEPT 92791-052)
 S (P/N WITH *S*): 72228-003

NONE : N 0
 M: YES

1 : AVAILABLE FOR BOTH DECKS
 NONE : NOT AVAILABLE FOR BOTH DECKS
 0 : 0mm(NONE)
 2 : 2mm 22: 2.2mm
 4 : 4mm 43: 4.3mm
 5 : 5mm
 0 : AVAILABLE FOR BOTH MOUNT

92791-xxxH (OPTIONAL HOLD DOWN)
 TYP.(2) HOLD DOWN
 HOLD DOWN
 ONLY FOR 92791-053M

mat'l. code		surface ISO 1302		tolerance ISO 406 ISO 110		projection		product family PCMCIA	
lfr	ecr no	dr	date	tolerances unless otherwise specified		MM		title 68P LONG HEADER TYPE 1/II /III GUIDE ASSY	
H	N06-006	NZ	03/22/06	angles	linear	scale 4		dwg no 92791	
J	N06-0129	MZ	05/10/06	±2°				sheet 1 of 2 size A 4	
K	N07-0109	DT	4/25/07					type CUSTOMER Drawing	
L	N07-0219	MZ	1/7/08	dr	Mike Zhou	05/10/06			
M	N08-0219	MZ	11/20/08	engr	Mike Zhou	05/10/06			
				chr	Mike Zhou	05/10/06			
				pppd	Qin David	05/10/06			
sheet index	revision sheet	M	M						
		1	2						

PDM: Rev:M
 STATUS Released
 Printed: Oct 12, 2010

form: A3

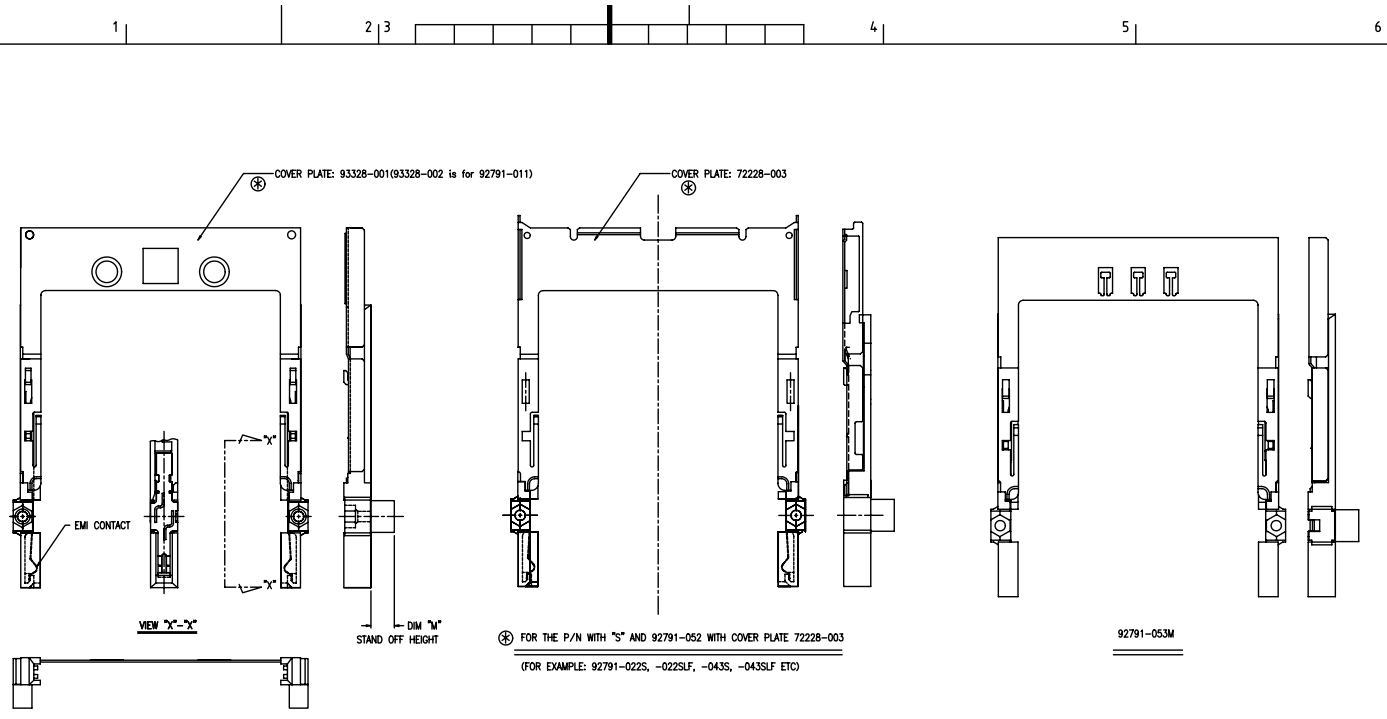
1 | 2 | 3 | 4 | 5 | 6

FCI CONFIDENTIAL



This document is the property of and includes CONFIDENTIAL and PROPRIETARY information of FCI. No part of the information shown on this document may be used in any way or disclosed to others without the written consent of FCI. Copyright © FCI

PRODUCT NO.
92791-001
92791-001LF
92791-001H
92791-001HLF
92791-021
92791-021LF
92791-041
92791-041LF
92791-041H
92791-041HLF
92791-051
92791-051M
92791-051LF
92791-051H
92791-051HLF
92791-052
92791-022
92791-022LF
92791-043
92791-043LF
92791-011
92791-001M
92791-053M



NOTE

- ① MATERIAL
 - GUIDE : POLYPHTHARAMID UL94V-0 BLACK
 - PLATE : STAINLESS
 - EMI CONTACT : PHOSPHOR BRONZE
 - HOLD DOWN : BRASS

- ② FINISH
 - EMI CONTACT : PRE-PLATING
 - 0.5µm MIN. Ni OVER ALL UNDER PLATING
 - 0.5µm MIN. Au CONTACT AREA

⚠ 3 "M" SHOWS IT IS LOW COST VERSION. IT IS OPTIONAL AND IN FIRST OF LETTER OF PART NO., SUCH AS 92791-051M IS LOW COST VERSION. DETAIL AS COMPONENT INFORMATION, 92791-051 IS NOT LOW COST VERSION.

4. GENERAL TOLERANCE : ±0.3

mat'l. code		surface	tolerance	projection	product family
ISO 1302		ISO 406 ISO 1101	ISO 1101	ISO 1101	PCMCIA
tolerances unless otherwise specified		angles linear		MM	title
±2'		scale 4		→	68P LONG HEADER TYPE I / II / III
dr Mike Zhou 05/10/06		engr Mike Zhou 05/10/06		sheet 2 of 2 size	
chr Mike Zhou 05/10/06		appr Qin David 05/10/06		A 4	
sheet index		revision sheet		Drawing	
				type CUSTOMER	