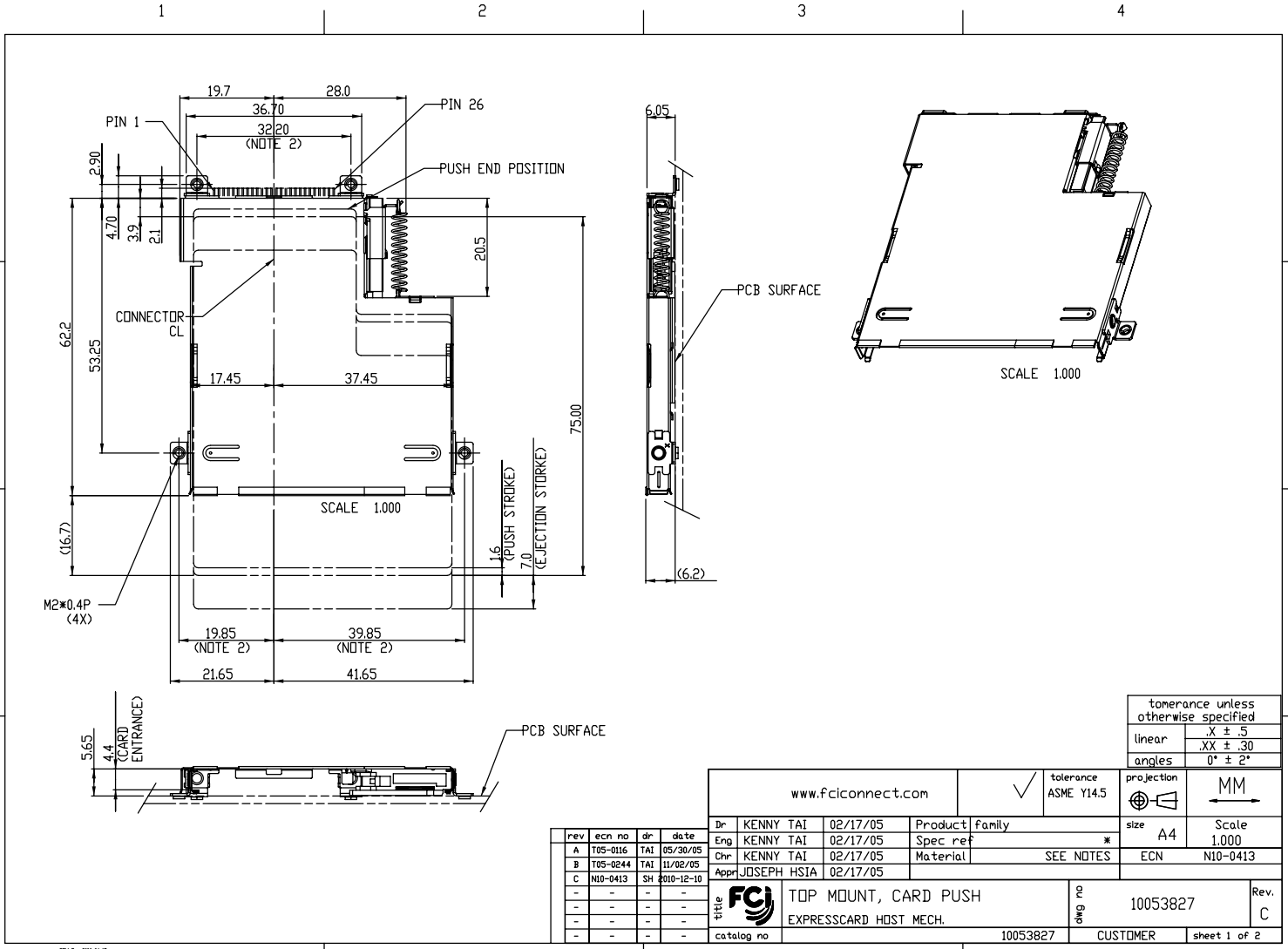




Copyright FCI.

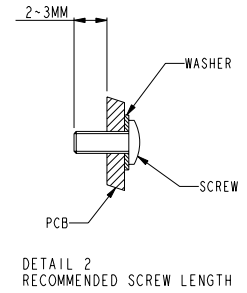
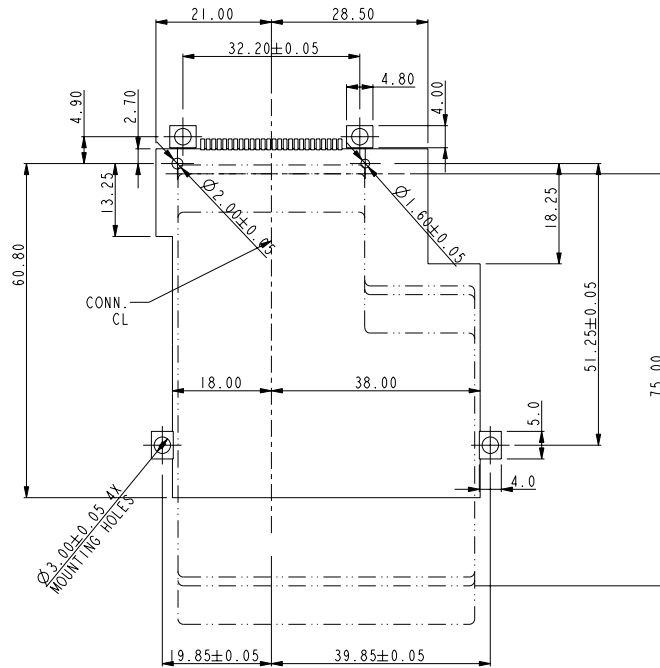


rev	ecr no	dr	date
A	T05-0116	TAI	05/30/05
B	T05-0244	TAI	11/02/05
C	N10-0413	SH	1010-12-10
-	-	-	-
-	-	-	-
-	-	-	-

www.fciconnect.com		tolerance ASME Y14.5	projection	tolerance unless otherwise specified
Dr KENNY TAI 02/17/05	Product family	ASME Y14.5	MM	linear .X ± .5
Eng KENNY TAI 02/17/05	Spec ref *	SEE NOTES	size A4	angles .XX ± .30
Chr KENNY TAI 02/17/05	Material	Material	ECN N10-0413	0° ± 2°
Appr JOSEPH HSIA 02/17/05				
title FCI TOP MOUNT, CARD PUSH EXPRESSCARD HOST MECH.		part no 10053827	Rev. C	
catalog no 10053827		CUSTOMER	sheet 1 of 2	

3 PDM: Rev:C STATUS:Released 4 Printed: Dec 22, 2010

PART NO.	MOUNTING	STAND-OFF	HOST CONN P/N	PRODUCT SPEC.	PACKING SPEC.	NOTE
10053827-00A	ABOVE	OMM	10053826-X00AXLFL	GS-12-301	GS-14-295	LEAD FREE
10053827-00ALF	ABOVE	OMM	10053826-X00AXLFL	GS-12-301	GS-14-295	LEAD FREE



SCALE 1.000

□ NO MOUNTING PART AREA

- NOTE:
1. 4 M2*0.4P SCREWS WITH WASHER ARE REQUIRED.
 2. SHOW DIMENSION AFTER FASTENED TO PCB.
 3. SEE HOST CONNECTOR DRAWINGS FOR PCB LAYOUT DETAIL.
 4. RECOMMENDED TIGHTING TORQUE 1.6~1.8 KGF-CM.
 5. SEE DETAIL 2 FOR RECOMMENDED SCREW LENGTH.

REV. 2006-04-17

	TOP MOUNT, CARD PUSH	dwg no	10053827	Rev.	C
	EXPRESSCARD HOST MECH.	catalog no	10053827	CUSTOMER	sheet 2 of 2

PDM: Rev:C STATUS:Released ⁴Printed: Dec 22, 2010