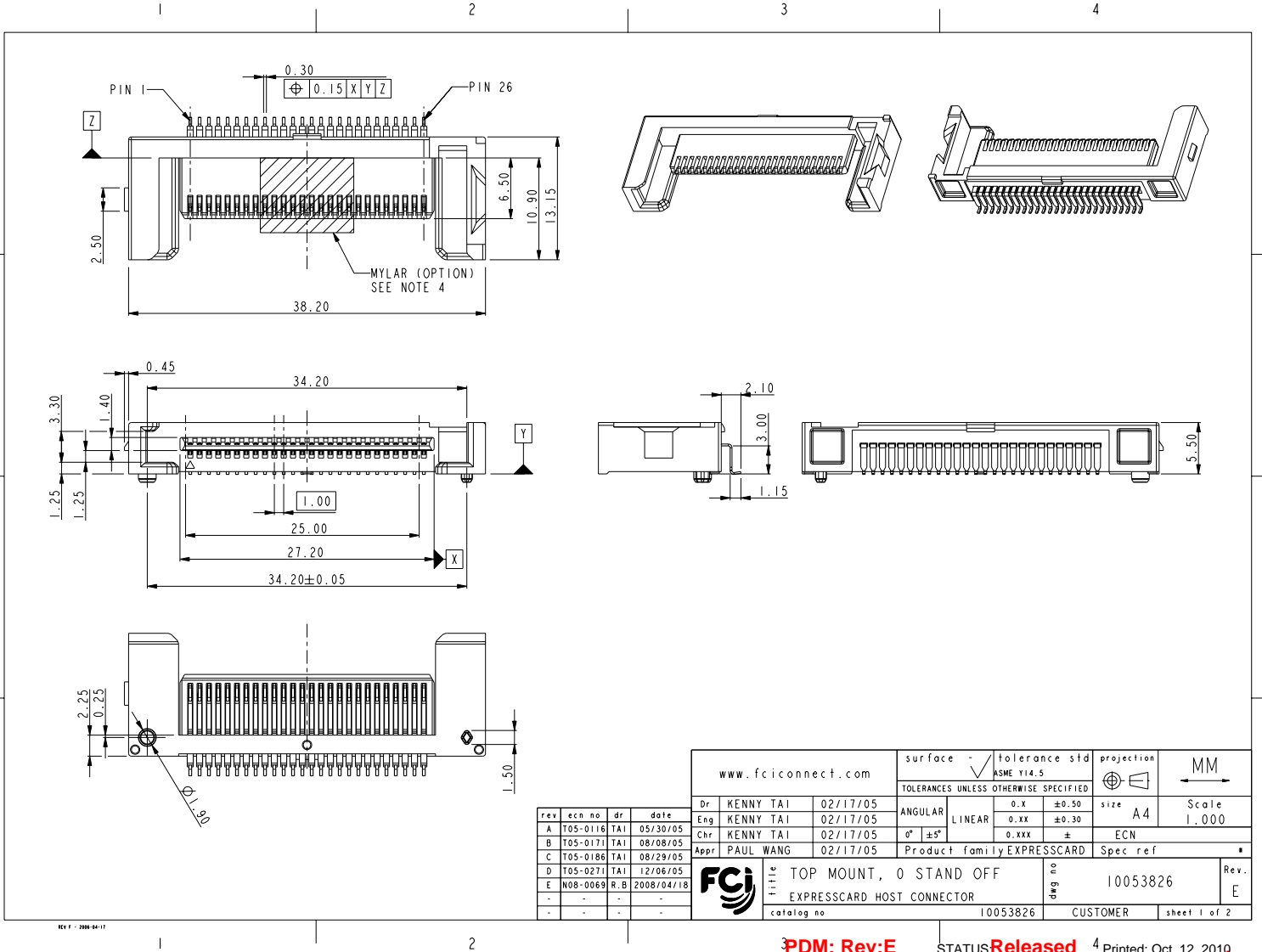




Copyright FCI.



REV F - 2008-04-17

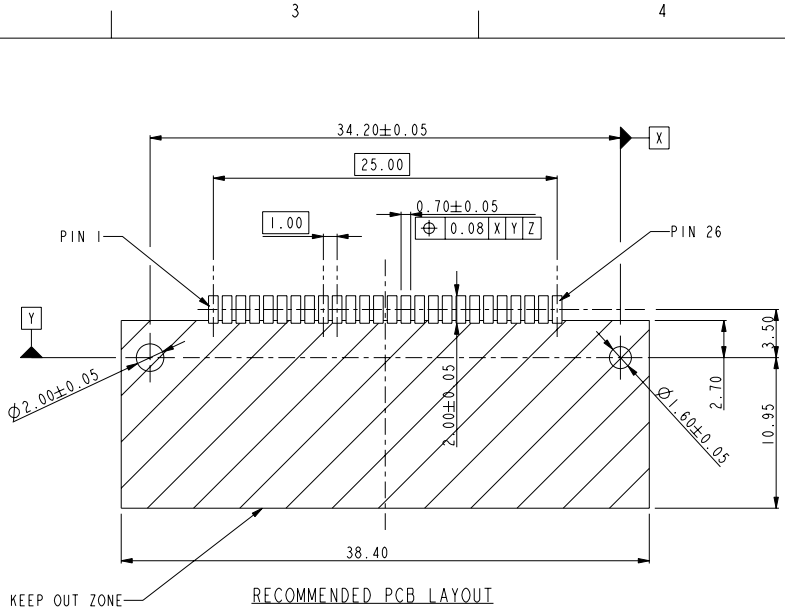
rev	ecm no	dr	date
A	T05-0116	TAI	05/30/05
B	T05-0171	TAI	08/08/05
C	T05-0186	TAI	08/29/05
D	T05-0271	TAI	12/06/05
E	N08-0069	R.B	2008/04/18
-	-	-	-
-	-	-	-

www.fciconnect.com		surface	tolerance std	projection	MM
		ASME Y14.5			
TOLERANCES UNLESS OTHERWISE SPECIFIED					
Dr	KENNY TAI	02/17/05	ANGULAR	0.x ±0.50	size A4
Eng	KENNY TAI	02/17/05	LINEAR	0.xx ±0.30	Scale 1.000
Chr	KENNY TAI	02/17/05	0° ±5°	0.xxx ±	ECN
Appr	PAUL WANG	02/17/05	Product family EXPRESSCARD		Spec ref
FCI		TITLE TOP MOUNT, 0 STAND OFF		part no	10053826
		EXPRESSCARD HOST CONNECTOR		Rev.	E
		catalog no	10053826	CUSTOMER	sheet 1 of 2

PDM: Rev:E STATUS Released 4 Printed: Oct 12, 2010



Copyright FCI.



- NOTES :
- MATERIAL:
HOUSING: HIGH TEMPERATURE THERMOPLASTIC,
UL 94 V-0 FLAME RETARDANT.
TERMINAL: COPPER ALLOY.
PLATING SPEC. AS BELOW :
Ni 50u" UNDER PLATED.
Au OR GXT OVER CONTACT AREA. (ONE SIDE)
Tin 120u" OVER SOLDERING AREA.
 - PACKING SPEC. GS-14-924.
 - PRODUCT PERFORMANCE PER SPEC. GS-12-285.
 - PART NUMBER SCHEME: (EX. 10053826-100ABSMFL)
10053826-X XX X X X X LF (LEAD FREE)

SPEC.	OPTION (CODE)		
	WITH (M)	WITHOUT ()	
MYLAR			
PACKING	TRAY (S)	TAPE & REEL (T)	TUBE (P)
HSG COLOR	BLACK (B)	NATURE (N)	
MOUNT SIDE	ABOVE (A)		
STAND-OFF	0 (00)		
PLATING	GOLD 30u" (1)	GXT 30u" (2)	
		GXT 15u" (4)	

5. RoHS COMPATIBLE PRODUCT SPECIFICATIONS
- a-PLATING:
- "LF" MEANS THE PRODUCT IS LEAD-FREE, 2micro-meter MINIMUM MATTE TIN OVER 1.27micro-meter MINIMUM NICKEL UNDERPLATE.
- b-MANUFACTURING PROCESS COMPATIBILITY:
- THE HOUSING WILL WITHSTAND EXPOSURE TO 260°C±5°C SOLDER BATH TEMPERATURE FOR 5 SECONDS IN A REFLOW SOLDER APPLICATION WITH A 1.6mm MIN THICK CIRCUIT BOARD.

www.fciconnect.com		surface <input checked="" type="checkbox"/>	tolerance std ASME Y14.5	projection <input checked="" type="checkbox"/>	MM
		TOLERANCES UNLESS OTHERWISE SPECIFIED		<input checked="" type="checkbox"/>	Scale 1.000
Dr	KENNY TAI	02/17/05	ANGULAR	LINEAR	size A4
Eng	KENNY TAI	02/17/05	0° ±5°	0.xx ±0.30	ECN
Chr	KENNY TAI	02/17/05	0° ±5°	0.xxx ±	ECN
Appr	PAUL WANG	02/17/05	Product family EXPRESSCARD		Spec ref
FCJ		TOP MOUNT, 0 STAND OFF		part no	10053826
		EXPRESSCARD HOST CONNECTOR		customer	10053826
		catalog no		customer	10053826
		PDM: Rev:E		STATUS Released	4 Printed: Oct 12, 2010

REV F - 2004-04-17