

83818-20XXX-XXLF

CARD TYPE II : 2

OPEN END : 0

LABEL RECESS : 0 = NO
1 = YES (63 X 41.2)
2 = CUSTOMIZATION

INSULATOR : 0 = NO
1 = YES (STANDARD)
2 = CUSTOMIZATION

CARDBUS : 0 = NO
1 = YES

CUSTOMIZATION : BLANK = NO CUSTOMIZATION
01 = RICOLA BOTTOM CARDSHIELD
04 = RICOLA TOP CARDSHIELD

RoHS COMPLIANT SPECIFICATION (optional)


LF (blank)

83818-20XXX-XX IS SIMILAR TO 83818-20XXX-XXLF, THE SUFFIX "LF" IS ADDED FOR LEAD FREE IDENTIFICATION. THIS PRODUCT MEETS EUROPEAN UNION DIRECTIVES AND OTHER COUNTRY REGULATIONS AS PER GS-22-008. PACKAGING SPECIFICATION GS-14-920.

- NOTES :
- CARDSHIELD :
 - MATERIAL = STAINLESS STEEL
 - TEXTURE AND VISUAL QUALITY ACCORDING GS-12-022
 - THICKNESS 0.2
 - FRAME BAR :
 - MATERIAL = PPO BLACK UL94 V-0
 - INSULATOR :
 - MATERIAL : POLYESTER FOIL
 - DIELECTRIC STRENGTH = 2 500 V
 - TEMPERATURE RANGE : -40°C TO +85°C
 - PACKAGED IN THERMOFORMED TRAY ACCORDING GS-14-995 500 PCS PER CARTON BOX.

| rev | ecn no | dr | date |
|-----|----------|-----|----------|
| A | F10159 | LSA | 01.03.28 |
| B | F10564 | FCH | 01.10.23 |
| C | F05-0270 | LSA | 05-10-07 |
| D | F06-0254 | LSA | 05-11-07 |
| E | F07-0213 | LSA | 06-06-29 |
| F | F07-0133 | LSA | 07-02-15 |

Mark with (N/A)

| | | | |
|---|--------------|----------------|----------------------|
| Material | - | Spec ref | GS-19-022 |
| Mat code | - | surface | tolerance ISO 406 |
| Heat treat | - | | ISO 1001 |
| Plating/Finish | - | | ISO 1302 |
| Dr | L, SAILLARD | 05-06-10 | projection mm |
| Eng | L, SAILLARD | 05-06-10 | size A4 |
| Chr | G, PEQUIGNOT | 05-06-10 | Scale 1:1 |
| Appl | / | / | ECN F06-0213 |
|  FCI - CARDSHIELD | | Model Name | 83818-20121-03 |
| Pro/E file catalog no - | | Model Revision | 1 |
| Rel. date - | | REL Level | RELEASED |
| Status - | | Rev. | 83818C |
| Customer - | | Customer | 83818C |
| Sheet 1 of 3 | | | F |

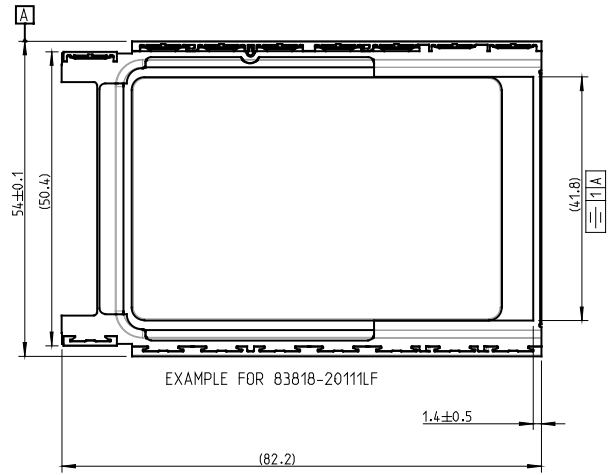
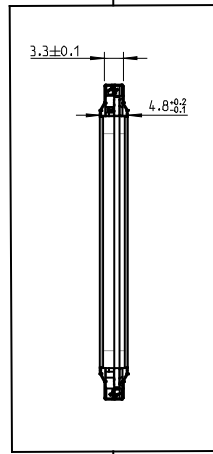
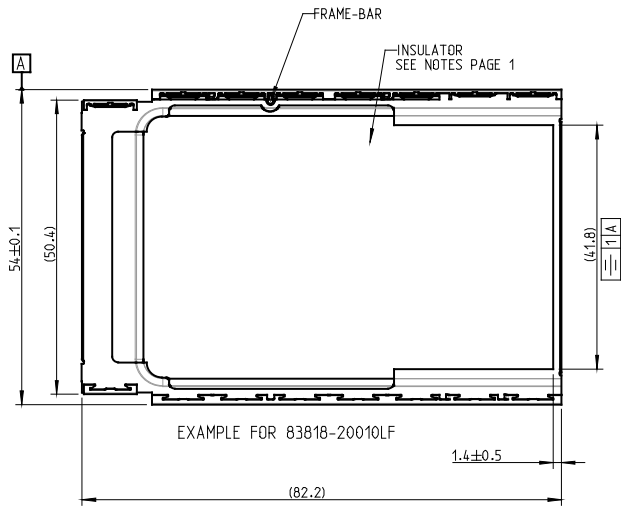
FCI CONFIDENTIAL



PDM: Rev:F
 STATUS: Released
 Printed: Oct 01, 2010
 This document is the property of and remains confidential and proprietary information of FCI. No part of the information shown on this document may be used in any way or disclosed to others without the written consent of FCI. Copyright FCI.

| STANDARD PART NUMBER | LABEL RECESS | MADE FROM | | |
|----------------------|--------------|---------------|-----------|-----------|
| | | CARDSHIELD | FRAME-BAR | INSULATOR |
| 83818-20000LF | NO | 10047174-2000 | YES | NO |
| 83818-20000 | | | | |
| 83818-20010LF | NO | 10047174-2000 | YES | YES |
| 83818-20010 | | | | |
| 83818-20100LF | YES | 10047174-2010 | YES | NO |
| 83818-20100 | | | | |
| 83818-20110LF | YES | 10047174-2010 | YES | YES |
| 83818-20110 | | | | |

| STANDARD PART NUMBER | CARDBUS LABEL RECESS | MADE FROM | | |
|----------------------|----------------------|---------------|-----------|-----------|
| | | CARDSHIELD | FRAME-BAR | INSULATOR |
| 83818-20001LF | NO | 10047174-2001 | YES | NO |
| 83818-20001 | | | | |
| 83818-20011LF | NO | 10047174-2001 | YES | YES |
| 83818-20011 | | | | |
| 83818-20101LF | YES | 10047174-2011 | YES | NO |
| 83818-20101 | | | | |
| 83818-20111LF | YES | 10047174-2011 | YES | YES |
| 83818-20111 | | | | |



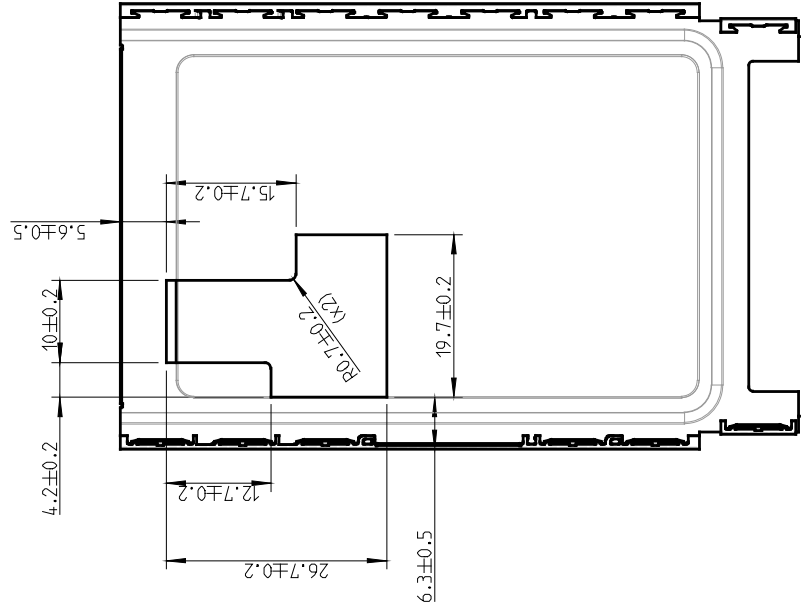
ON 83818-20XXXLF, THE SUFFIX "LF" IS ADDED FOR LEAD FREE IDENTIFICATION. THIS PRODUCT MEETS EUROPEAN UNION DIRECTIVES AND OTHER COUNTRY REGULATIONS AS PER GS-22-008. PACKAGING SPECIFICATION GS-14-920.

| | | | | | | |
|--|------------|-----------------------|--------|--------|------|--------------|
| | Title | - STANDARD CARDSHIELD | dwg no | 83818C | Rev. | F |
| | | - ROCARD CARDSHIELD | | | | |
| | catalog no | - CUSTOMER | | | | sheet 2 of 3 |

Copyright FCI.

PART NUMBER
83818-20121-04LF

83818-20XXX-XX IS SIMILAR TO 83818-20XXX-XXLF.
THE SUFFIX "LF" IS ADDED FOR LEAD FREE IDENTIFICATION. THIS PRODUCT MEETS EUROPEAN UNION DIRECTIVES AND OTHER COUNTRY REGULATIONS AS PER GS-22-008. PACKAGING SPECIFICATION GS-14-920.



NOTES :

- 1- INSULATOR :
 - MATERIAL : POLYESTER FOIL
 - DIELECTRIC STRENGTH = 2 500 V
 - TEMPERATURE RANGE : -40°C TO +85 °C
- 2- PACKAGED IN THERMOFORMED TRAY ACCORDING GS-14-995
 500 PCS PER CARTON BOX.

CUSTOMIZED PRODUCT

| | | | | | | |
|----------------|--------------|--|-----------|-------------------------|----------------|------------------|
| Material | - | Spec ref | GS-19-022 | projection | | mm |
| Mat code | - | surface | ✓ | tolerance | ISO 406 | |
| Heat treat | - | | | | ISO 1001 | |
| Plating/Finish | - | | | ISO 1302 | size | A4 |
| Dr | L. SAILLARD | 05-06-10 | | | Product family | PCMCIA |
| Eng | L. SAILLARD | 05-06-10 | | | Model Name | 83818-20121-03 |
| Chr | G. PEQUIGNOT | 05-06-10 | | | Model Revision | I |
| Appr / | / | / | | | REL Level | RELEASED |
| | | TOP CARD SHIELD - RICOLA ANTENNA EXTENSION | | dwg no 83818C | | Rev. F |
| Pro/E file | catalog no | | | CUSTOMER | | sheet 3 of 3 |

FCI CONFIDENTIAL



STATUS: **Released** PDM: Rev:F
 Printed: Oct 01, 2010
 This document is the property of and remains confidential and proprietary information of FCI. No part of the information shown on this document may be used in any way or disclosed to others without the written consent of FCI. Copyright FCI.