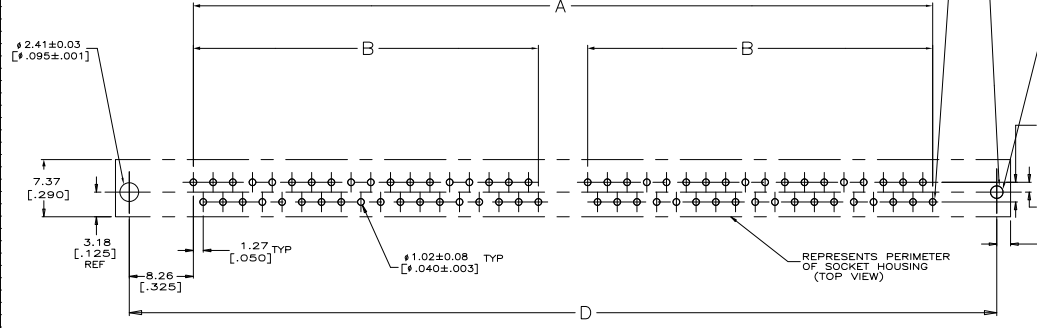
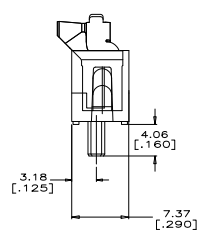
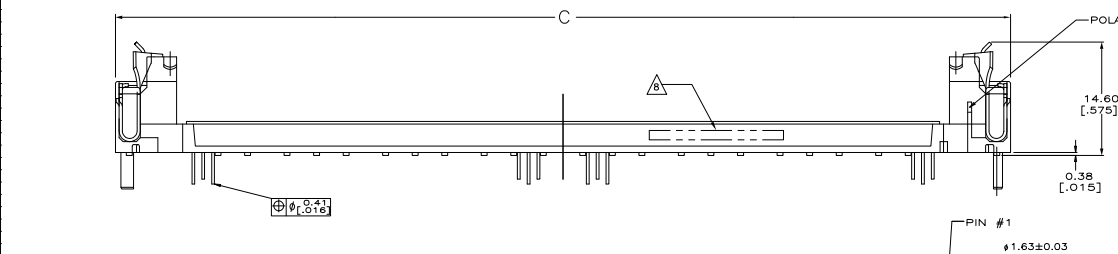
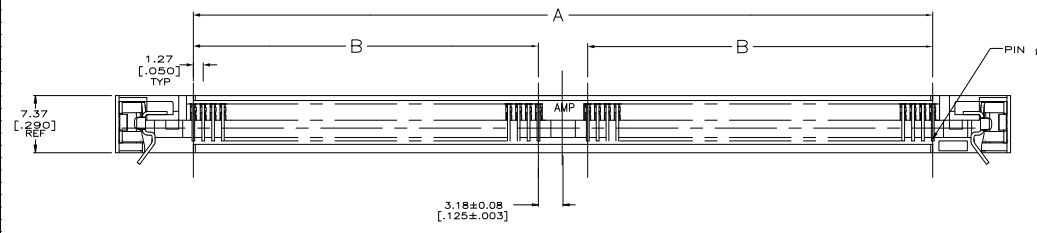


THIS DRAWING IS UNPUBLISHED. RECEIVED FOR INFORMATION. ALL RIGHTS RESERVED.

REV	DATE	DESCRIPTION	BY	CHK	APP
AG 5.3					
R		REVISED PER ECO-04-02042			

- △ HOUSING-MATERIAL: LIQUID-CRYSTAL-POLYMER.
- △ CONTACT-MATERIAL: PHOS. BRONZE, AMP 100-255.
- △ LATCH-MATERIAL: BRASS, AMP 100-86 NICKEL PLATE 0.00127[.00050] MIN PER AMP SPEC 112-25-1.
- △ CONTACT-PLATE: 0.00508[.000200] MIN. TIN/LEAD OVER 0.00127[.000050]MIN NICKEL.
- 5. IN ADDITION TO THOSE RECOMMENDED "SIMM" P. C. BOARD DIMENSIONS AND TOLERANCES SHOWN, ALL JEDEC SPECIFICATIONS APPLY AS SHOWN ON MO-116, ISSUE A.
- 6. RECOMMENDED MATING S.I.M.M. TAB METALLURGY: BASE METAL-COPPER, PLATING TO BE 0.00762[.000300] MIN TIN/LEAD OVER 0.00127[.000050] MIN NICKEL.
- △ PACKAGED IN TUBES.
- △ DATE CODE: (YEAR WEEK) XXXX FORMAT, LOCATED APPROXIMATELY AS SHOWN ON OPPOSITE SIDE.



	D	C	B	A	NO. OF POS	PART NO
OBsolete	111.76[4.400]	115.32[4.540]	44.45[1.750]	95.25[3.750]	72	2-822019-4
OBsolete	121.92[4.800]	125.48[4.940]	49.53[1.950]	105.41[4.150]	80	822019-5
	111.76[4.400]	115.32[4.540]	44.45[1.750]	95.25[3.750]	72	822019-4
OBsolete	106.68[4.200]	110.24[4.340]	41.91[1.650]	90.17[3.550]	68	822019-3
OBsolete	101.60[4.000]	105.16[4.140]	39.37[1.550]	85.09[3.350]	64	822019-2
OBsolete	71.12[2.800]	74.68[2.940]	24.13[.950]	54.64[2.150]	40	822019-1

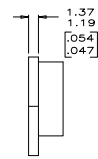
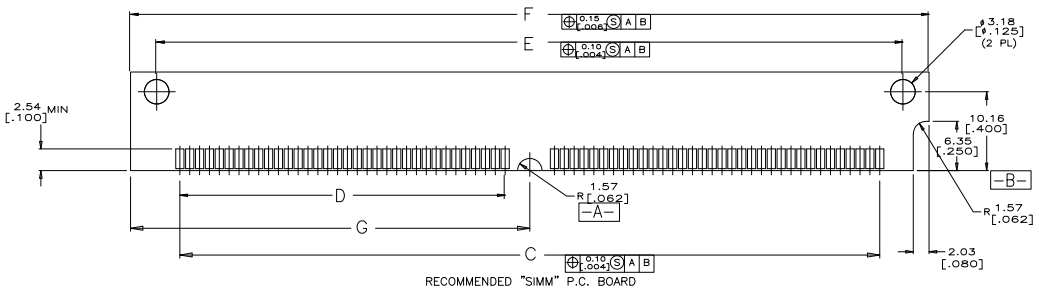
RECOMMENDED P.C. BOARD HOLE PATTERN SOCKET SIDE

THIS DRAWING IS A CONTROLLED DOCUMENT. THE CUSTOMER'S PROPERTY. THIS DRAWING IS THE PROPERTY OF THE CUSTOMER. IT IS TO BE KEPT IN CONFIDENCE AND NOT TO BE REPRODUCED OR COPIED IN ANY MANNER WITHOUT THE WRITTEN PERMISSION OF THE CUSTOMER.

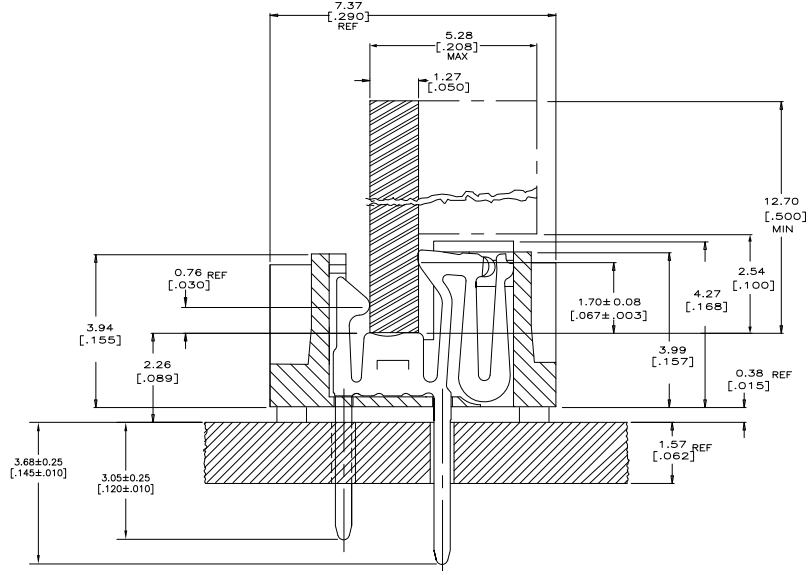
DATE: 01/07/79 DRAWING NO: 822019

CUSTOMER DRAWING

SIZE: 4.1 1 2 R



RECOMMENDED "SIMM" P.C. BOARD



SECTIONED THROUGH CONNECTOR ASSEMBLY

	G	F	E	D	C	NO. OF POSN
OBsolete	59.06[2.325]	118.11[4.650]	111.35[4.384]	49.53[1.950]	105.41[4.150]	80
OBsolete	53.98[2.125]	107.95[4.250]	101.19[3.984]	44.45[1.750]	95.25[3.750]	72
OBsolete	51.44[2.025]	102.87[4.050]	96.11[3.784]	41.91[1.650]	90.17[3.550]	68
OBsolete	48.90[1.925]	97.79[3.850]	91.03[3.584]	39.37[1.550]	85.09[3.350]	64
OBsolete	33.66[1.325]	67.31[2.650]	60.55[2.384]	24.13[.950]	54.61[2.150]	40

RECOMMENDED "SIMM" P.C. BOARDS

THIS DRAWING IS A CONTROLLED DOCUMENT. UNLESS OTHERWISE SPECIFIED, ALL DIMENSIONS ARE IN INCHES.	DESIGNED BY: [Signature]	DATE: 10/77	CHECKED BY: [Signature]	DATE: 10/77
DRAWING NO: 100779	REV: G	REV DATE: 08/82	DRAWING NO: 100779	REV: G
ISSUED BY: [Signature]	DATE: 10/77	CUSTOMER DRAWING		SCALE: 4:1

THIS DRAWING IS A CONTROLLED DOCUMENT. UNLESS OTHERWISE SPECIFIED, ALL DIMENSIONS ARE IN INCHES.

DESIGNED BY: [Signature] DATE: 10/77

CHECKED BY: [Signature] DATE: 10/77

DRAWING NO: 100779 REV: G REV DATE: 08/82 DRAWING NO: 100779 REV: G

ISSUED BY: [Signature] DATE: 10/77 CUSTOMER DRAWING SCALE: 4:1 SHEET 2 OF 2