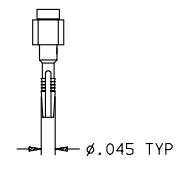
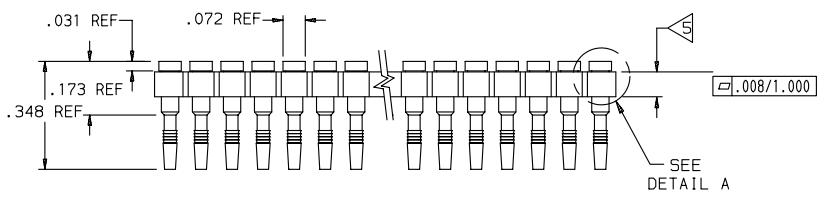
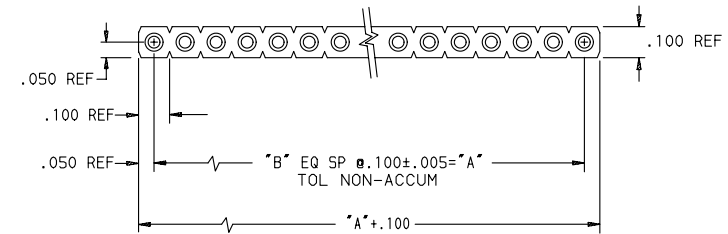


XXX	STYLE	SEE SHEET
998ELF	"A"	1
998ZLF	"B"	2

NOTE RoHS INFORMATION
 - The "LF" products meet european union Directives and other country regulations as described in 65-22-008.
 - Packaging spec: see 65-14-920

TABLE 1		
PART NUMBER		DIMENSION
SPF080-1 X [] - XXXYLF	"A"	"B"
01	0	0
02	.100	1
03	.200	2
04	.300	3
05	.400	4
06	.500	5
07	.600	6
08	.700	7
09	.800	8
10	.900	9
11	1.000	10
12	1.100	11
13	1.200	12
14	1.300	13
15	1.400	14
16	1.500	15
17	1.600	16
18	1.700	17



STYLE "A"

NOTES:

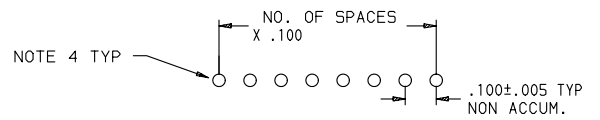
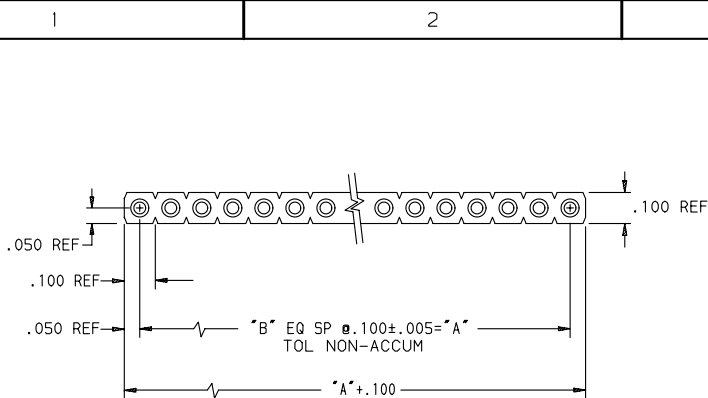
- CONTACT MATERIAL:
 OUTER SHELL: BRASS ALLOY 360, 1/2 HARD, PER ASTM B16.
 INNER CONTACT: BERYLLIUM COPPER, ALLOY 172, PER ASTM B194.
- CONTACT PLATING:
 OUTER SHELL: 80u" TO 120u" TIN/LEAD PER SAE AMS-P-81728,
 OUTER SHELL: 80u" TO 120u" TIN FOR LEAD FREE VERSION
 OVER 100u" TO 200u" NICKEL PER QQ-N-290.
 INNER CONTACT: 200u" TIN/LEAD PER SAE AMS-P-81728,
 INNER CONTACT: 200u" TIN FOR LEAD FREE VERSION
 OVER 50u" NICKEL PER QQ-N-290.
- NUMBER OF CONTACTS PER ROW (01 TO 18).
- RECOMMENDED PCB THRU HOLE DIA. .040±.003
- INSULATOR THICKNESS MAY BE .080 OR .100.
- INSULATOR MATERIAL:
 BLACK GLASS FILLED POLYESTER (PCT)

rev	ecn no	dr	date
H	LS07-0271	HLE	2007/10/28
J	LS07-0299	HLE	2007/11/21
K	LS08-0038	STG	2008/02/01
L	LS08-0051	HLE	2008/02/11
F	LS06-0189	HLE	2006/11/20
G	LS07-0141	HLE	2007/05/21

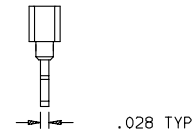
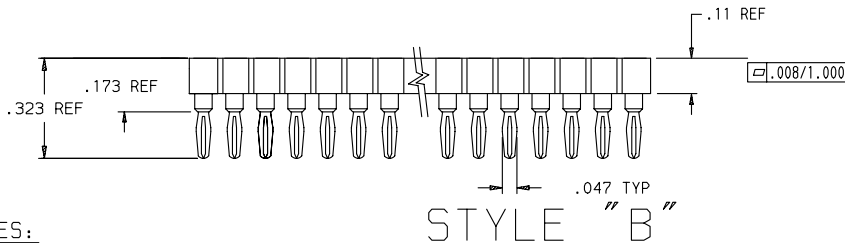
www.fciconnect.com		surface ISO 1302	tolerance std ISO 406 ISO 1101	projection A3	INCH
TOLERANCES UNLESS OTHERWISE SPECIFIED					
Dr	D-WOLFORD	2000/10/01	ANGULAR	0.X	±0.1
Eng	A-VASBINDER	2000/10/01	LINEAR	0.XX	±0.1
Chr	A-VASBINDER	2000/10/01	0.XX' ±2'	0.XXX	±0.1
Appr	A-VASBINDER	2000/10/01	Product family	SOCKET	Spec ref -
FCI			SINGLE ROW SIP		Rev.
catalog no			COMPLIANT PRESS FIT		58808
SEE TABLE			CUSTOMER sheet 1 of 2		

Copyright FCI. FCI

REV F - 2006-04-17



THIS HOLE PATTERN APPLIES TO BOTH
STYLE A AND STYLE B CONTACTS.



NOTES:

- CONTACT MATERIAL:
OUTER SHELL: PHOSPHOR BRONZE.
INNER CONTACT: BERYLLIUM COPPER.
- CONTACT PLATING:
OUTER SHELL: 200u" TIN/LEAD PER SAE AMS-P-81728,
OUTER SHELL: 200u" TIN FOR LEAD FREE VERSION
OVER 100u" NICKEL PER QQ-N-290.
INNER CONTACT: 200u" TIN/LEAD PER SAE AMS-P-81728,
INNER CONTACT: 200u" TIN FOR LEAD FREE VERSION
OVER 100u" NICKEL PER QQ-N-290.

3 NUMBER OF CONTACTS PER ROW (01 TO 18).

4 COMPLIANT PRESS FIT IN ϕ .040±.003 PLATED HOLE, RECOMMENDED DRILL SIZE 1.15 MM FOR .090 TO .130 THICK BOARD.

5 INSULATOR MATERIAL:
BLACK GLASS FILLED POLYESTER (PCT)

NOTE RoHS INFORMATION

- The "LF" products meet european union Directives and other country regulations as described in GS-22-008.
- Packaging spec: see GS-14-920

www.fciconnect.com		surface ISO 1302	tolerance std ISO 406 ISO 1101	projection A3	inch Scale 1:1
TOLERANCES UNLESS OTHERWISE SPECIFIED					
Dr	D-WOLFORD	2000/10/01	ANGULAR	0.X	±0.1
Eng	A-VASBINDER	2000/10/01	LINEAR	0.XX	±0.1
Chr	A-VASBINDER	2000/10/01	0.XX	0.XXX	±0.1
Appr	A-VASBINDER	2000/10/01	Product family		SOCKET
FCI			SINGLE ROW SIP		Rev.
COMPLIANT PRESS FIT			58808		L
catalog no			SEE TABLE	CUSTOMER sheet 2 of 2	

rev	ecn no	dr	date
H	LS07-0271	HLE	2007/10/28
J	LS070293	DLW	2007/11/21
K	LS08-0038	STG	2008/02/01
L	LS08-0051	HLE	2008/02/11
F	LS06-0189	HLE	2006/11/20
G	LS07-0141	HLE	2007/05/21

REV F - 2006-04-17