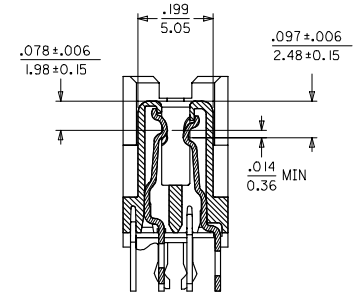
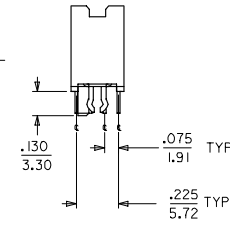
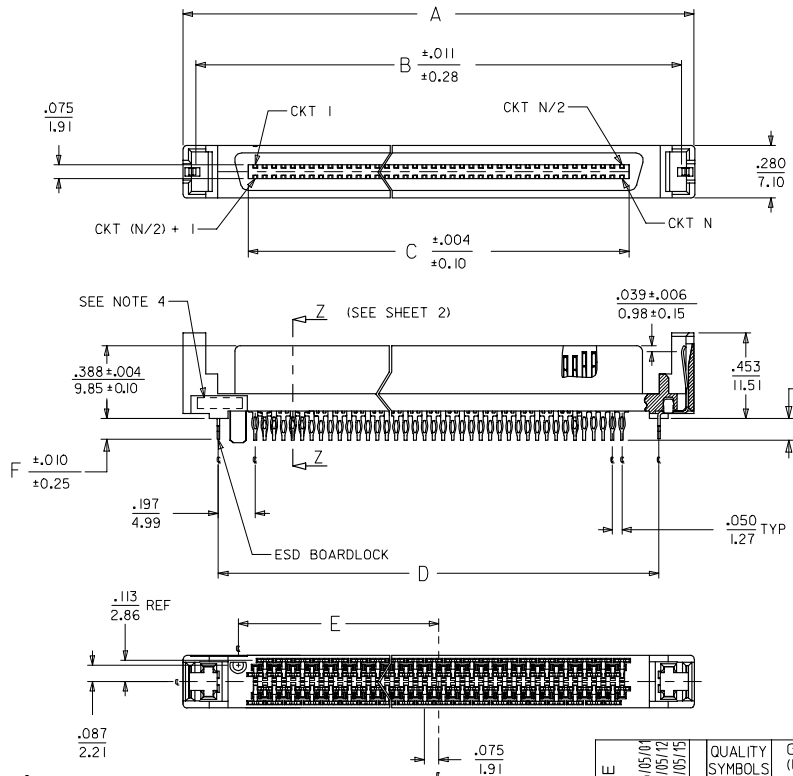
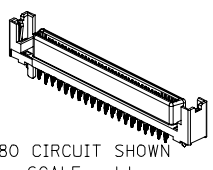


NOTES:

- MATERIAL:
HOUSING: I.R. COMPATIBLE POLYMER, GLASS FILLED, UL 94 V 0, BLACK
TERMINALS: COPPER ALLOY
BOARDLOCK: COPPER ALLOY
- FINISH:
TERMINALS: SELECTIVE GOLD IN CONTACT AREA
THICKNESS = 30 MICROINCHES / 0.763 MICROMETERS
SELECTIVE TIN IN TAIL AREA
THICKNESS = 100 MICROINCHES/ 2.54 MICROMETERS
NICKEL UNDERPLATE OVERALL.
ESD BOARDLOCK:
TIN OVERALL.
- PRODUCT SPECIFICATION: PS-73826-0000
- FOUR DIGIT DATE CODE IN THIS LOCATION (WK YR).
- CONTACT GAP WILL ACCOMMODATE MATING CONNECTOR OF:
.063+/--.003 (1.60+/--.008)



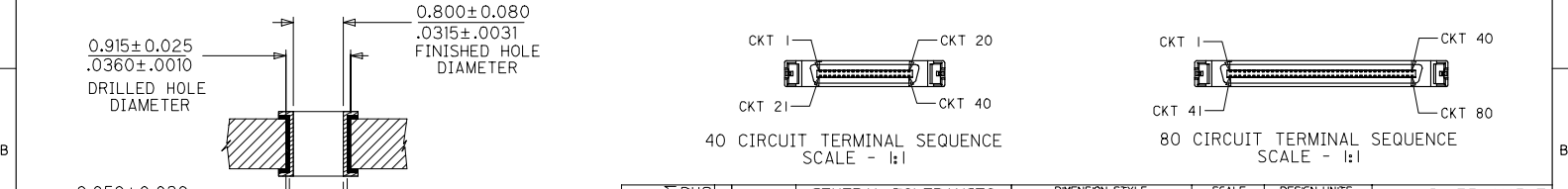
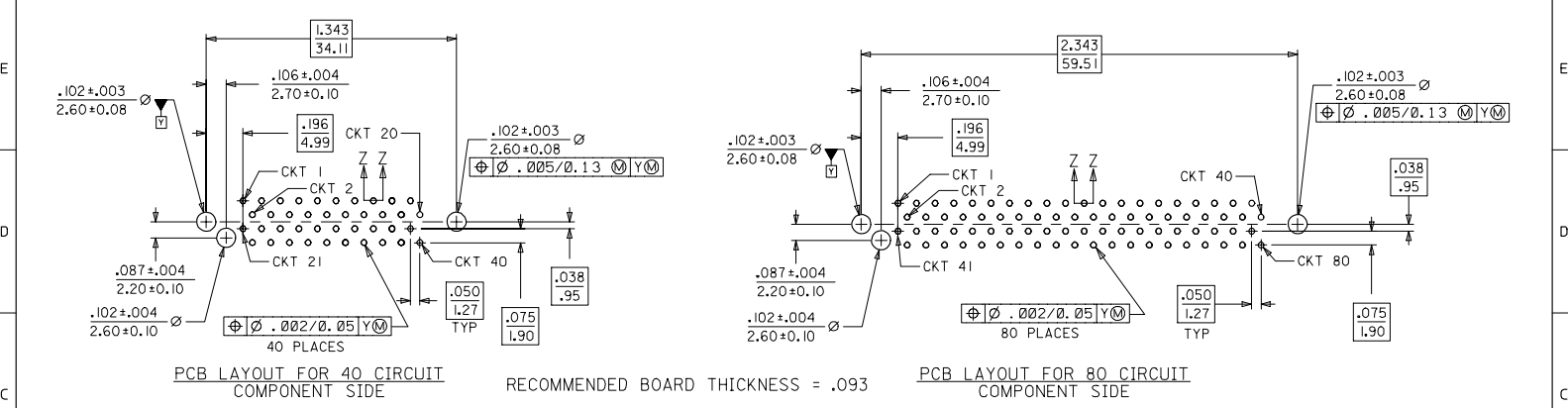
| | |
|-----|-----|
| 2 | E |
| 1 | E |
| SHT | REV |



lb_frame_B.P ME T
Rev. D 2004/04/02

| | | | | | | | | | | |
|--|-------------------------------|---------------------------------------|-----------------------|--------------------------|----------------------|----------------------|--|--|---------------|---|
| CLARIFY PCB HOLE EC NO: UCP2006-2509 DRAWN BY: BBARKER CHKD BY: SMART APPR: MILLER | QUALITY SYMBOLS ▽=0 ▽=0 | GENERAL TOLERANCES (UNLESS SPECIFIED) | | DIMENSION STYLE IN/MM | SCALE 2:1 | DESIGN UNITS INCH | THIRD ANGLE PROJECTION | | | |
| | | 4 PLACES ± --- ± --- | 3 PLACES ± --- ± .005 | 2 PLACES ± 0.13 ± .01 | 1 PLACE ± 0.25 ± --- | ANGULAR ±1/2° | DRAFT WHERE APPLICABLE MUST REMAIN WITHIN DIMENSIONS | DRAWN BY: RKADAMS CHECKED BY: BBARKER APPROVED BY: SMILLER | DATE: 04/8/25 | TITLE: SALES ASSEMBLY MOLEX SCA-2 PRESS-FIT RECEPTACLE MOLEX INCORPORATED |

| MATERIAL NUMBER | CIRCUIT SIZE | DIMENSION A | DIMENSION B | DIMENSION C | DIMENSION D | DIMENSION E | DIMENSION F | DIMENSION P | ADVANCED TERMINALS / CIRCUITS (SECTION Z-Z, SHEET 1) |
|-----------------|--------------|--------------|--------------|---------------|--------------|---------------|-------------|-------------|---|
| 738265001 | 80 | 2.717/(69.0) | 2.583/(65.6) | 2.025/(51.44) | 2.343/(59.5) | 1.066/(27.06) | .109/(2.77) | .125/(3.18) | 1, 36, 37, 38, 39, 40, 41, 42, 43, 45, 46, 75, 76, 77, 78, 79, 80 |
| 738265002 | 40 | 1.717/(43.6) | 1.583/(40.2) | 1.025/(26.04) | 1.343/(34.1) | .566/(14.38) | .109/(2.77) | .125/(3.18) | 21, 22, 23, 26, 29, 32, 35, 36, 37, 38, 39, 40 |
| 738265003 | 80 | 2.717/(69.0) | 2.583/(65.6) | 2.025/(51.44) | 2.343/(59.5) | 1.066/(27.06) | .109/(2.77) | .135/(3.43) | 1, 36, 37, 38, 39, 40, 41, 42, 43, 45, 46, 75, 76, 77, 78, 79, 80 |
| | 40 | 1.717/(43.6) | 1.583/(40.2) | 1.025/(26.04) | 1.343/(34.1) | .566/(14.38) | .109/(2.77) | .135/(3.43) | 21, 22, 23, 26, 29, 32, 35, 36, 37, 38, 39, 40 |



| QUALITY SYMBOLS | GENERAL TOLERANCES (UNLESS SPECIFIED) | | DIMENSION STYLE | SCALE | DESIGN UNITS | THIRD ANGLE PROJECTION |
|-----------------|--|-------|---|--------------|---|------------------------|
| | mm | INCH | IN/MM | 1:1 | INCH | |
| ▽=0 | 4 PLACES ±--- | ±--- | DRAWN BY | DATE | SALES ASSEMBLY MOLEX SCA-2 PRESS-FIT RECEPTACLE MOLEX INCORPORATED | |
| ▽=0 | 3 PLACES ±--- | ±.005 | CHKADAMS | 8/25/04 | | |
| | 2 PLACES ±0.13 | ±.010 | CHECKED BY | DATE | | |
| | 1 PLACE ±0.25 | ±--- | BBARKER | 8/25/04 | | |
| | ANGULAR ±1/2° | | APPROVED BY | DATE | MOLEX INCORPORATED | |
| | DRAFT WHERE APPLICABLE MUST REMAIN WITHIN DIMENSIONS | | SMILLER | 8/25/04 | | |
| | MATERIAL NO. | | SEE TABLE | DOCUMENT NO. | STEEL NO. | |
| | SIZE B | | THIS DRAWING CONTAINS INFORMATION THAT IS PROPRIETARY TO MOLEX INCORPORATED AND SHOULD NOT BE USED WITHOUT WRITTEN PERMISSION | | | |

NOTE: SECTION Z-Z - RECOMMENDED PCB HOLE CONFIGURATION

THE DRILLED HOLE SIZE IS BASED ON THE RECOMMENDED PLATINGS AND THICKNESSES. IF OTHER PLATING TYPES AND/OR THICKNESSES ARE USED, A DRILL SIZE THAT WILL RESULT IN THE FINISHED HOLE SIZE INDICATED WILL NEED TO BE USED.