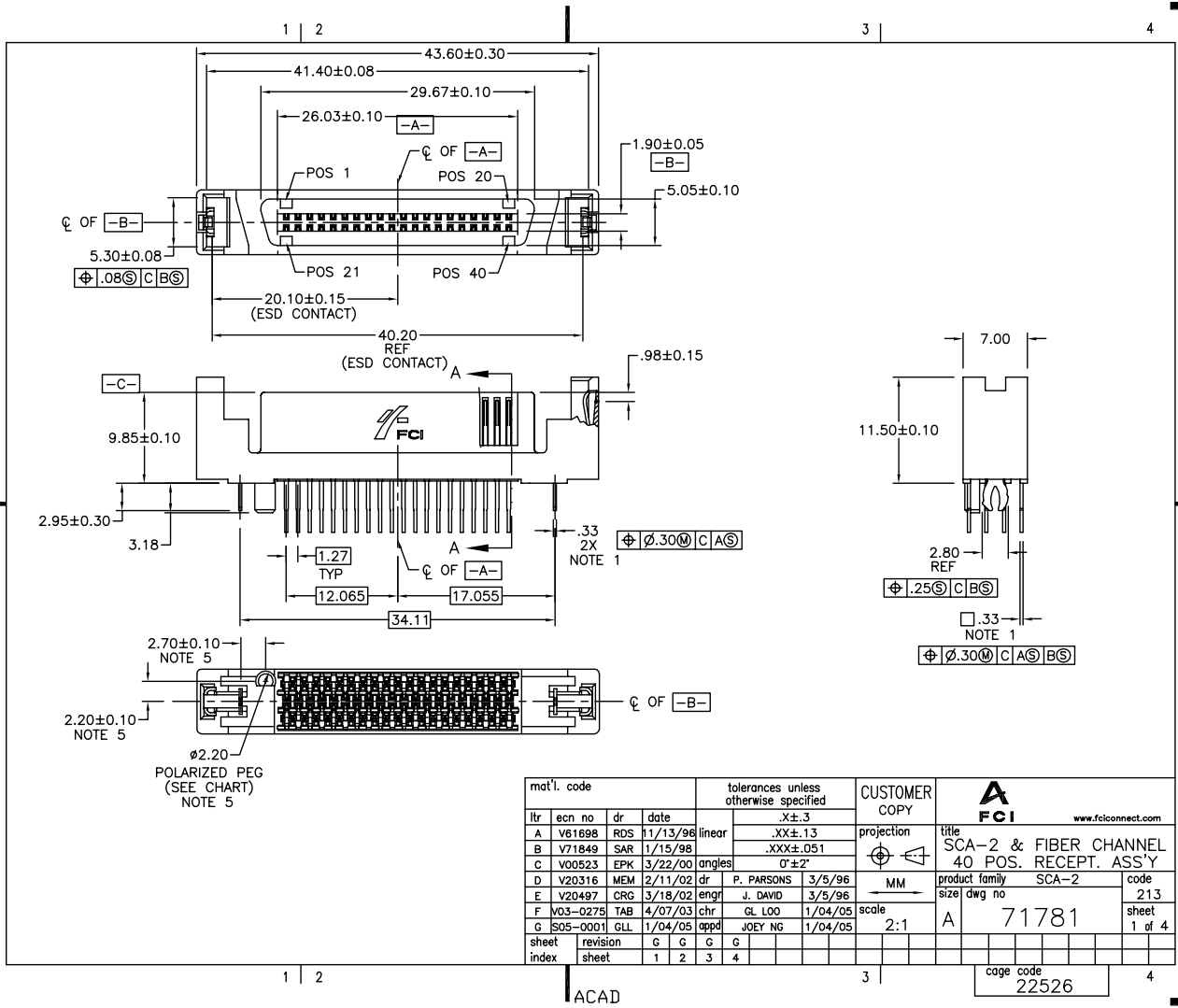


Tous droits strictement réservés. Reproduction ou communication à des tiers  
 interdite sous quelque forme que ce soit sans autorisation écrite du propriétaire.  
 Property of FCI. In droits de reproduction FCI.

All rights strictly reserved. Reproduction or issue to third parties in any  
 form whatever is not permitted without written authority from the proprietor.  
 Property of FCI. Copyright FCI.

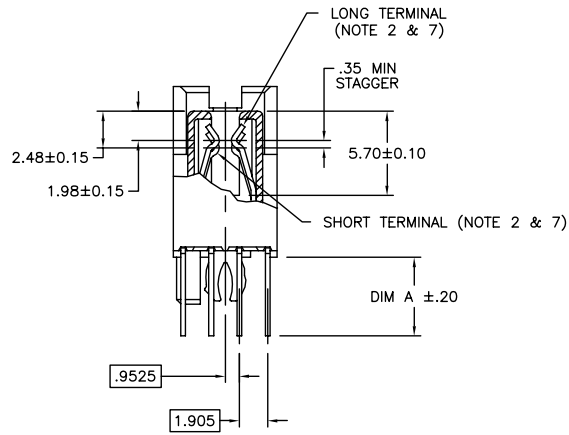


| mat'l. code |           | tolerances unless otherwise specified |          | CUSTOMER COPY |                   | FCI www.fciconnect.com |                       |       |
|-------------|-----------|---------------------------------------|----------|---------------|-------------------|------------------------|-----------------------|-------|
| ltr         | ecn no    | dr                                    | date     | linear        | .XX±.13           | projection             | title                 |       |
| A           | V61698    | RDS                                   | 11/13/98 |               | .XXX±.051         | MM                     | SCA-2 & FIBER CHANNEL |       |
| B           | V71849    | SAR                                   | 1/15/96  | angles        | 0'±2"             | MM                     | 40 POS. RECEPT. ASS'Y |       |
| C           | V00523    | EPK                                   | 3/22/00  |               |                   | MM                     | product family SCA-2  |       |
| D           | V20316    | MEM                                   | 2/11/02  | dr            | P. PARSONS 3/5/96 | MM                     | code 213              |       |
| E           | V20497    | CRG                                   | 3/18/02  | engr          | J. DAVID 3/5/96   | MM                     | size                  |       |
| F           | V03-0275  | TAB                                   | 4/07/03  | chr           | GL LOO 1/04/05    | MM                     | dwg no                |       |
| G           | IS05-0001 | GLL                                   | 1/04/05  | appd          | JOEY NG 1/04/05   | MM                     | 71781                 |       |
| sheet       | revision  | G                                     | G        | G             | G                 | scale                  | 2:1                   |       |
| index       | sheet     | 1                                     | 2        | 3             | 4                 |                        | sheet 1 of 4          |       |
|             |           |                                       |          |               |                   |                        | cage code             | 22526 |

Tous droits strictement réservés. Reproduction ou communication à des tiers  
 Interdite sous quelque forme que ce soit sans autorisation écrite du propriétaire.  
 Property of FCI. Copyright FCI. Droits de reproduction FCI.



All rights strictly reserved. Reproduction or issue to third parties in any  
 form whatever is not permitted without written authority from the proprietor.  
 Property of FCI. Copyright FCI.



SECTION A-A

|             |                |                                       |      |               |            |                               |  |
|-------------|----------------|---------------------------------------|------|---------------|------------|-------------------------------|--|
| mat'l. code |                | tolerances unless otherwise specified |      | CUSTOMER COPY |            | www.fciconnect.com            |  |
| ltr         | ecn no         | dr                                    | date | linear        | projection | title                         |  |
|             |                |                                       |      | .X ± .3       |            | SCA-2 & FIBER CHANNEL         |  |
|             |                |                                       |      | .XX ± .13     |            | 40 POS. RECEPT. ASS'Y         |  |
|             |                |                                       |      | .XXX ± .051   |            | product family SCA-2 code 213 |  |
|             |                |                                       |      | angles        | MM         | size   dwg no                 |  |
|             |                |                                       |      | dr            | scale      | A 71781                       |  |
|             |                |                                       |      | engr          | 3:1        | sheet 2 of                    |  |
|             |                |                                       |      | chr           |            | cage code                     |  |
|             |                |                                       |      | appd          |            | 22526                         |  |
| sheet index | revision sheet |                                       |      |               |            |                               |  |

ACAD

PDM: Rev:G

STATUS:Released

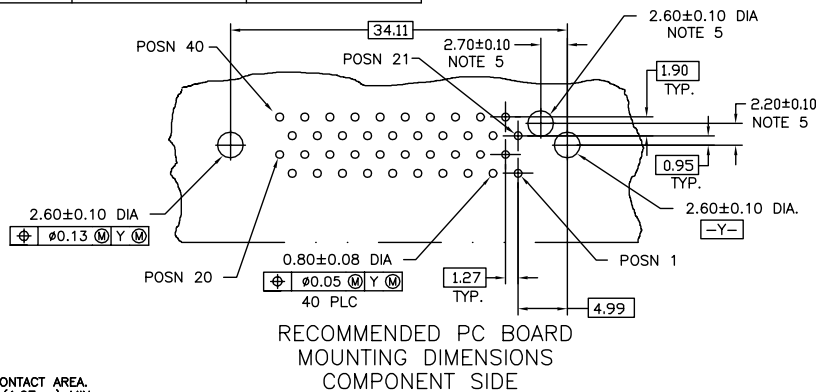
Printed: Mar 11, 2011

Tous droits strictement réservés. Reproduction ou communication à des tiers interdite sous quelque forme que ce soit sans autorisation écrite du propriétaire. Propriété de c FCI. Droits de reproduction FCI.



All rights strictly reserved. Reproduction or issue to third parties in any form whatever is not permitted without written authority from the proprietor. Property of FCI. Copyright FCI.

| PRODUCT NO. | "A" DIM | POLARIZATION PEG | RECOMMENDED P.C. BOARD THICKNESS | PLATING    | CONTACT POSITIONS |                 |
|-------------|---------|------------------|----------------------------------|------------|-------------------|-----------------|
| 71781-001   | 2.79    | YES              | 1.57mm (0.062")                  | SEE NOTE 4 | SEE NOTE 2        |                 |
| -002        | 2.79    | NO               |                                  |            |                   |                 |
| -003        | 3.18    | YES              |                                  |            |                   |                 |
| -004        | 3.18    | NO               | 2.36mm (0.093")                  |            |                   |                 |
| -005        | 4.06    | YES              |                                  |            |                   |                 |
| -006        | 4.06    | NO               |                                  |            |                   | 3.18mm (0.125") |
| 71781-007   | 3.18    | YES              | SEE NOTE 4                       | SEE NOTE 7 |                   |                 |
| 71781-101   | 2.79    | YES              | 1.57mm (0.062")                  | SEE NOTE 6 | SEE NOTE 2        |                 |
| -102        | 2.79    | NO               |                                  |            |                   |                 |
| -103        | 3.18    | YES              |                                  |            |                   |                 |
| -104        | 3.18    | NO               |                                  |            |                   | 2.36mm (0.093") |
| -105        | 4.06    | YES              |                                  |            |                   |                 |
| 71781-106   | 4.06    | NO               | 3.18mm (0.125")                  |            |                   |                 |



NOTES :

- TRUE POSITION NOTES APPLY AT TERMINAL TIP.
- CONTACTS IN POSITIONS 1 THRU 20,24,25,27,28, 30, 31, 33, AND 34 ARE SHORT TERMINALS. CONTACTS IN POSITIONS 21, 22, 23, 26, 29, 32, AND 35 THRU 40 ARE LONG TERMINALS.
- RAW MATERIALS:  
HOUSING: HTN, UL94V-0, COLOR: BLACK  
CONTACTS: PHOSPHOR-BRONZE
- CONTACT PLATING: 30u" (0.76um) MIN. GXT PLATING OVER 50u" (1.27um) NICKLE MIN. UNDERPLATE IN CONTACT AREA. 100u" (2.54um) MIN. TIN-LEAD PLATING OVER 50u" (1.27um) MIN. NICKLE UNDERPLATE IN P.C. BOARD LEG AREA. 50u" (1.27um) MIN. NICKLE UNDERPLATE OVER REMAINING AREA.
- DIMENSIONS DO NOT APPLY TO CONNECTOR STYLES WITHOUT POLARIZATION PEG. (SEE CHART)
- CONTACT PLATING: 30u" (0.76um) MIN. GOLD PLATING OVER 50u" (1.27um) NICKLE MIN. UNDERPLATE IN CONTACT AREA. 100u" (2.54um) MIN. TIN-LEAD PLATING OVER 50u" (1.27um) MIN. NICKLE UNDERPLATE IN P.C. BOARD LEG AREA. 50u" (1.27um) MIN. NICKLE UNDERPLATE OVER REMAINING AREA.
- CONTACTS IN POSITIONS 1 THRU 21, 24, 25, 30-32, 35 & 40 ARE LONG TERMINALS. CONTACTS IN POSITIONS 22, 23, 26, 27, 28, 29, 33, 34, 36-39 ARE SHORT TERMINALS.

|             |          |                                       |      |               |                   |                    |  |        |
|-------------|----------|---------------------------------------|------|---------------|-------------------|--------------------|--|--------|
| mat'l. code |          | tolerances unless otherwise specified |      | CUSTOMER COPY |                   | www.fciconnect.com |  |        |
| ltr         | ecn no   | dr                                    | date | linear        | .XX±.13           | projection         | title  |        |
| g           |          |                                       |      | angles        | .XXX±.051         |                    | SCA-2 & FIBER CHANNEL<br>40 POS. RECEPT. ASS'Y |        |
|             |          |                                       |      | dr            | 0'±2'             |                    | product family                                 | SCA-2  |
|             |          |                                       |      | engr          | P. PARSONS 3/5/96 | MM                 | code   | 213    |
|             |          |                                       |      | chr           | J. DAVID 3/5/96   | scale              | size   | dwg no |
|             |          |                                       |      | appd          | GL LOO 1/04/05    | 2:1                | A  | 71781  |
| sheet       | revision |                                       |      |               |                   |                    |  | sheet  |
| index       | sheet    |                                       |      |               |                   |                    |  | 3 of   |

cage code 22526

ACAD

PDM: Rev:G

STATUS:Released

Printed: Mar 11, 2011


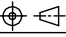
Tous droits strictement réservés. Reproduction ou communication à des tiers interdite sous quelque forme que ce soit sans autorisation écrite du propriétaire. Propriété de c FCI. Droits de reproduction FCI.

All rights strictly reserved. Reproduction or issue to third parties in any form whatever is not permitted without written authority from the proprietor. Property of FCI. Copyright FCI.

| PRODUCT NO. | "A" DIM | POLARIZATION PEG | RECOMMENDED P.C. BOARD THICKNESS | PLATING    | CONTACT POSITIONS |
|-------------|---------|------------------|----------------------------------|------------|-------------------|
| 71781-001LF | 2.79    | YES              | 1.57mm (0.062")                  | SEE NOTE 9 | SEE NOTE 2        |
| -002LF      | 2.79    | NO               |                                  |            |                   |
| -003LF      | 3.18    | YES              |                                  |            |                   |
| -004LF      | 3.18    | NO               |                                  |            |                   |
| -005LF      | 4.06    | YES              |                                  |            |                   |
| -006LF      | 4.06    | NO               |                                  |            |                   |
| 71781-007LF | 3.18    | YES              | 2.36mm (0.093")                  | SEE NOTE 9 | SEE NOTE 7        |
| 71781-101LF | 2.79    | YES              | 1.57mm (0.062")                  | SEE NOTE 8 | SEE NOTE 2        |
| -102LF      | 2.79    | NO               |                                  |            |                   |
| -103LF      | 3.18    | YES              |                                  |            |                   |
| -104LF      | 3.18    | NO               |                                  |            |                   |
| -105LF      | 4.06    | YES              |                                  |            |                   |
| 71781-106LF | 4.06    | NO               | 3.18mm (0.125")                  |            |                   |

NOTES :

- ⑧ CONTACT PLATING: 30u" (0.76um) MIN. GOLD PLATING OVER 50u" (1.27um) NICKLE MIN. UNDERPLATE IN CONTACT AREA. 100u" (2.54um) - 200u" (5.08um) TIN PLATING OVER 50u" (1.27um) - 100u" (2.54um) NICKEL UNDERPLATE IN P.C. BOARD LEG AREA. 50u" (1.27um) NICKEL UNDERPLATE OVER REMAINING AREA.
- ⑨ CONTACT PLATING: 30u" (0.76um) MIN. GXT PLATING OVER 50u" (1.27um) NICKLE MIN. UNDERPLATE IN CONTACT AREA. 100u" (2.54um) - 200u" (5.08um) TIN PLATING OVER 50u" (1.27um) - 100u" (2.54um) NICKEL UNDERPLATE IN P.C. BOARD LEG AREA. 50u" (1.27um) NICKEL UNDERPLATE OVER REMAINING AREA.
- ⑩ THE HOUSING WILL WITHSTAND EXPOSURE TO 260°C PEAK TEMPERATURE FOR 10 SECONDS IN A WAVE SOLDER APPLICATION WITH A 1.57mm MINIMUM THICK CIRCUIT BOARD.
- ⑪ THIS PRODUCT MEETS EUROPEAN UNION DIRECTIVES AND OTHER COUNTRY REGULATIONS AS DESCRIBED IN GS-22-008.

|             |                |                                       |      |               |   |   |  |
|-------------|----------------|---------------------------------------|------|---------------|---|---|--|
| mat'l. code |                | tolerances unless otherwise specified |      | CUSTOMER COPY |   | <br>www.fciconnect.com |  |
| ltr         | ecn no         | dr                                    | date | linear        | projection  | title   |  |
| g           |                |                                       |      | .XX±.13       |  | SCA-2 & FIBER CHANNEL   |  |
|             |                |                                       |      | .XXX±.051     |   | 40 POS. RECEPT. ASS'Y   |  |
|             |                |                                       |      | angles        | 0°±2'   | product family  |  |
|             |                |                                       |      | dr            | P. PARSONS 3/5/96   | SCA-2   |  |
|             |                |                                       |      | engr          | J. DAVID 3/5/96   | code  |  |
|             |                |                                       |      | chr           | GL LOO 1/04/05  | 213   |  |
|             |                |                                       |      | appd          | JOEY NG 1/04/05   | sheet   |  |
| sheet index | revision sheet |                                       |      |               | scale   | 4 of 4  |  |
|             |                |                                       |      |               | 2:1   |   |  |

cage code  
22526

ACAD

PDM: Rev:G

STATUS:Released

Printed: Mar 11, 2011