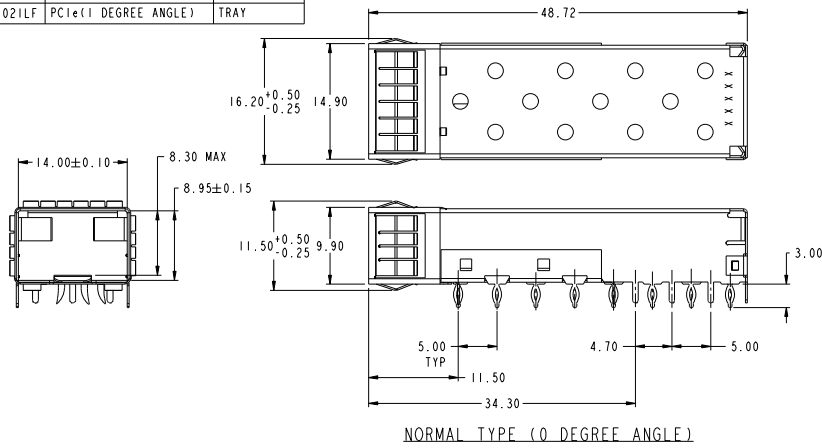
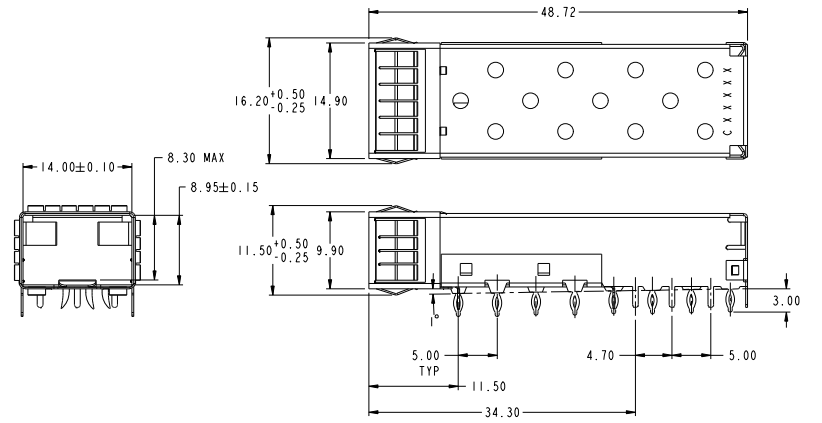


PRODUCT NUMBER	MOUNTING TYPE	PACKAGING
10099100-011LF	NORMAL (0 DEGREE ANGLE)	TRAY
10099100-021LF	PCIe (1 DEGREE ANGLE)	TRAY



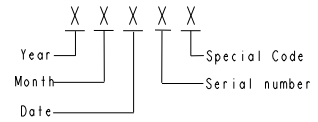
NORMAL TYPE (0 DEGREE ANGLE)



PCIe TYPE (1 DEGREE ANGLE)

NOTES:

1. MATERIAL: COPPER ALLOY.
2. PLATING:
CAGE BODY: 1.27µm MIN. NICKEL PLATING OVER ALL.
EMI FINGER: 1.27µm MIN. SATIN TIN OVER 1.27µm MIN NICKEL UNDERPLATING.
3. DATUM AND BASIC DIMENSIONS ARE ESTABLISHED BY CUSTOMER.
4. PADS AND VIAS ARE CHASSIS GROUND, 11 PLACES.
5. THROUGH HOLES, PLATING OPTIONAL.
6. CROSS-HATCHED AREA DENOTES COMPONENT AND TRACE KEEP-OUT (EXCEPT CHASSIS GROUND).
7. THIS AREA DENOTES COMPONENT KEEP-OUT (TRACES ALLOWED).
8. PRODUCT SPECIFICATION: GS-12-616
9. APPLICATION SPECIFICATION: GS-20-125
10. PRODUCT MEETS EUROPEAN UNION DIRECTIVES AND OTHER COUNTRY REGULATIONS AS DESCRIBED IN GS-22-008.
11. DATE CODE BE PRINTED ON PROPER SURFACE.
12. PRINTED "C" MARK BEFORE DATE CODE FOR P/N:-021LF(PCIe TYPE).



DATE CODE DESCRIPTION

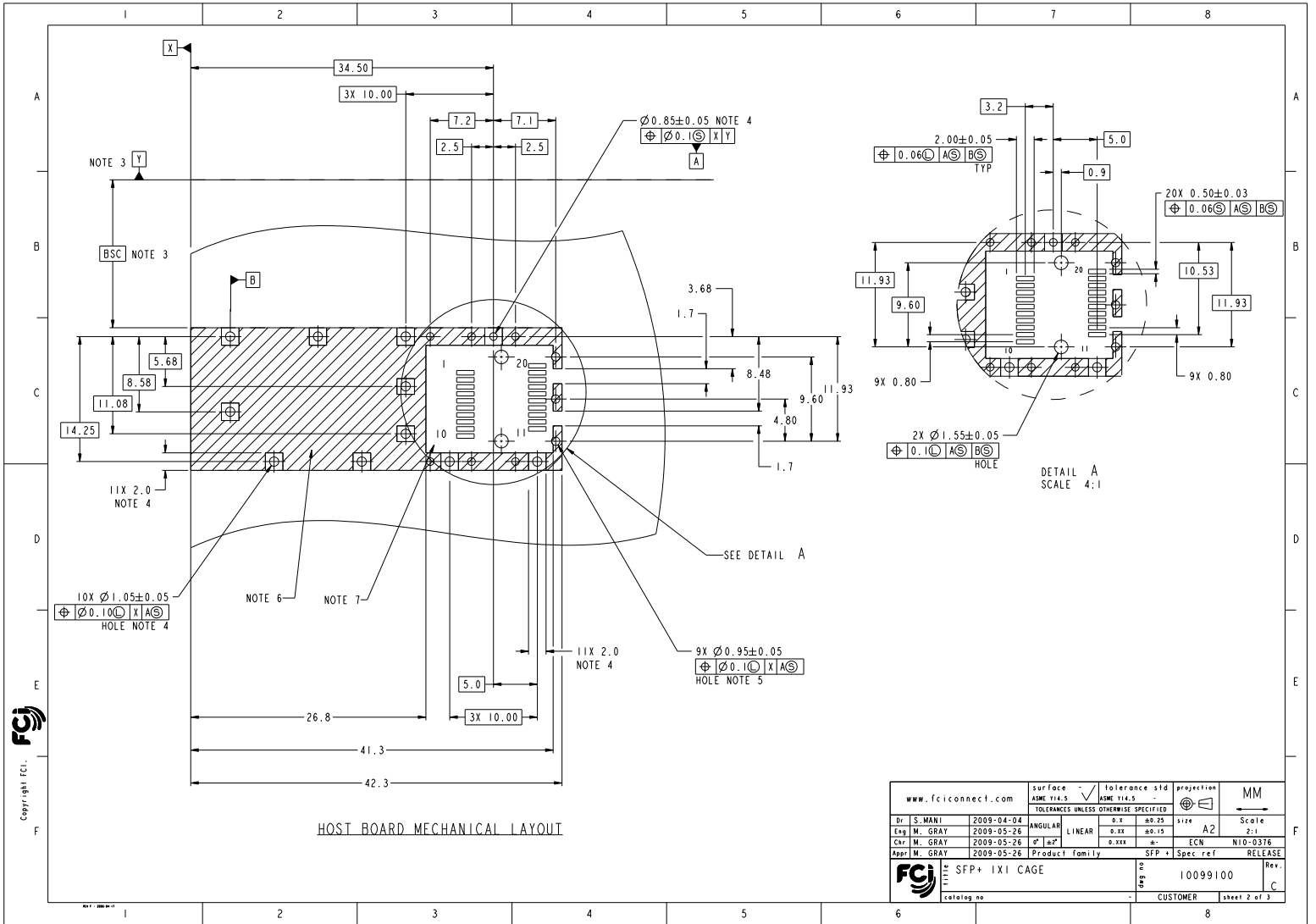
Copyright FCI

www.fciconnect.com		Surface	ASME Y14.5	tolerance	ASME Y14.5	projection	MM
		TOLERANCES UNLESS OTHERWISE SPECIFIED					
Rev	Rev no	dt	date	Dr.	S. MANI	2009-04-04	ANGULAR
A	Y09-2442	SM	2009-11-03	Eng.	M. GRAY	2009-05-26	LINEAR
B	Y10-0263	MWG	2010-06-14	Chr.	M. GRAY	2009-05-26	2° ± 2°
C	N10-0376	ANDI	2010-11-24	Appr.	M. GRAY	2009-05-26	Product family
				FCI		SFP+ 1X1 CAGE	Rev.
				catalog no		10099100	C
						CUSTOMER	sheet 1 of 3

PDM: Rev:C

STATUS:Released

Printed: Mar 21, 2011



www.fciconnect.com		surface	tolerance	std	projection	MM
		ASME Y14.5	ASME Y14.5			
TOLERANCES UNLESS OTHERWISE SPECIFIED						
Dr. S. MANI	2009-04-04	ANGULAR	0.1	0.25	1/16"	A2
Eng. M. GRAY	2009-05-26	LINEAR	0.125	0.15		2:1
Chr. M. GRAY	2009-05-26	2°	0.125		FCN	N10-0376
Appr. M. GRAY	2009-05-26	Product family	SFP+	Spec ref	RELEASE	
FCI	SFP+ 1X1 CAGE			10099100	Rev.	C
catalog no	CUSTOMER		sheet 2 of 3			

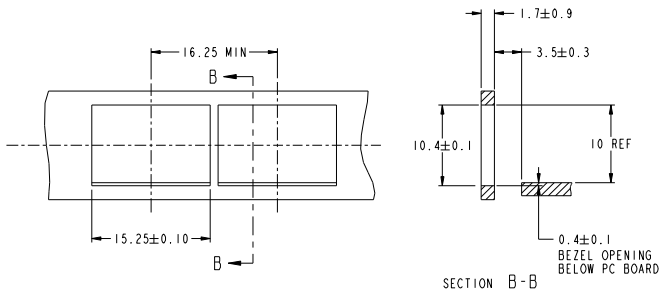
PDM: Rev:C

STATUS:Released

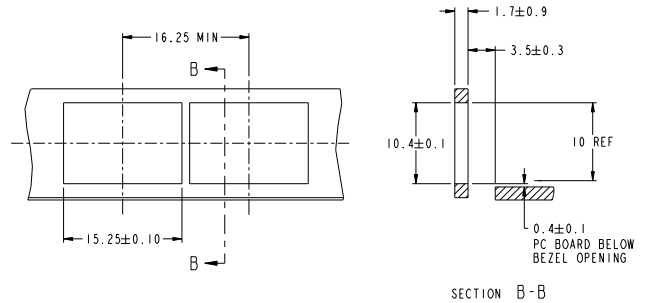
Printed: Mar 21, 2011

Copyright FCI

PRODUCT NUMBER	MOUNTING TYPE
10099100-01ILF	NORMAL TYPE
10099100-02ILF	FCI _e TYPE



RECOMMENDED PANEL DESIGN
FOR NORMAL TYPE



RECOMMENDED PANEL DESIGN
FOR FCI_e TYPE

Copyright FCI
FCI

www.fciconnect.com		Surface		Tolerance std		Projection		MM	
		ASME Y14.5		ASME Y14.5		A2		Scale	
		TOLERANCES UNLESS OTHERWISE SPECIFIED						2:1	
Dr. S. MANI	2009-04-04	ANGULAR	0.X	0.25	0.125				
Eng. M. GRAY	2009-05-26	LINEAR	0.1XX	0.15	0.075				
Chr. M. GRAY	2009-05-26	0°	0.1XX	0°	0°	FCN		N10-0376	
Appr. M. GRAY	2009-05-26	Product family	SFP+	Spec ref	RELEASE				
FCI		SFP+ 1X1 CAGE		10099100		Rev. C			
Catalog no.		CUSTOMER		sheet 3 of 3					