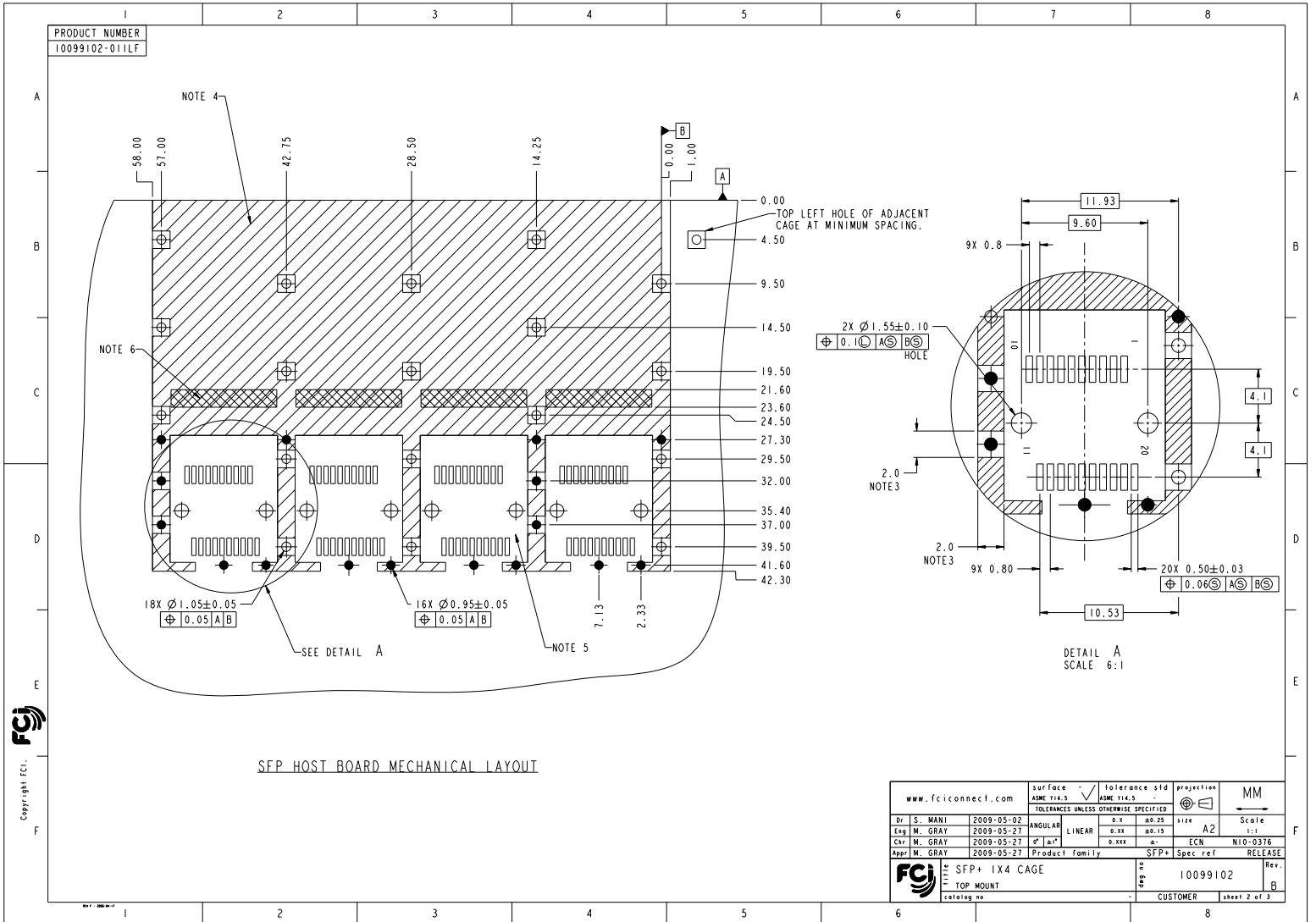


Copyright FCI  
FCI

www.fciconnect.com		Surface	ASME Y14.5	tolerance	ASME Y14.5	projection	MM				
		TOLERANCES UNLESS OTHERWISE SPECIFIED									
Rev	Rev no	dt	date	Dr. S. MANI	2009-05-02	ANGULAR	0.1	0.25	1126	A2	Scale
A	1009-2442	SM	2009-11-03	Eng. M. GRAY	2009-05-27	LINEAR	0.124	0.15			2:1
B	N10-0376	AND	2010-11-24	Chr. M. GRAY	2009-05-27	0.124	0.15			FCN	N10-0376
				Appr. M. GRAY	2009-05-27	Product family	SFP+ Spec ref		RELEASE		
				FCI SFP+ 1X4 CAGE		REV 2		10099102		Rev.	
				TOP MOUNT		REV 2		CUSTOMER		sheet 1 of 3	

PDM: Rev:B STATUS:Released Printed: Mar 22, 2011



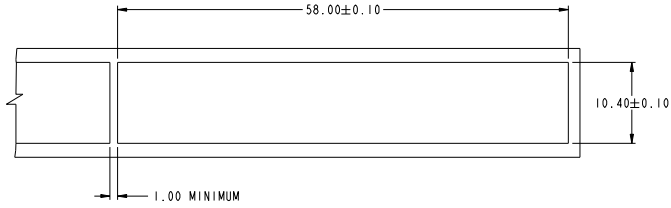
PDM: Rev:B

STATUS:Released

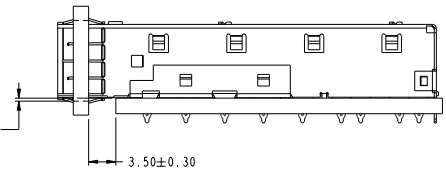
Printed: Mar 22, 2011

Copyright FCI

PRODUCT NUMBER  
10099102-011LF



0.40 ± 0.10  
RECOMMENDED SPACE FROM  
TOP OF PCB TO BOTTOM  
OF BEZEL OPENING.



BEZEL AND BOARD DIMENSIONS FOR SINGLE SIDE MOUNTING

Copyright FCI  
FCI

www.fciconnect.com		Surface ASME Y14.5		Tolerance ASME Y14.5		Projection A2		MM	
		TOLERANCES UNLESS OTHERWISE SPECIFIED							
Dr. S. MANI	2009-05-02	ANGULAR	0.X	0.25	0.125	Scale		1:1	
Eng. M. GRAY	2009-05-27	LINEAR	0.1X	0.15	0.075	FCN		N10-0376	
Chr. M. GRAY	2009-05-27	0" to 1"	0.1X	0.15	0.075	Spec ref		RELEASE	
FCI		SFP+ 1X4 CAGE		10099102		Rev.		B	
TOP MOUNT		CAGE NO		CUSTOMER		sheet 3 of 3			