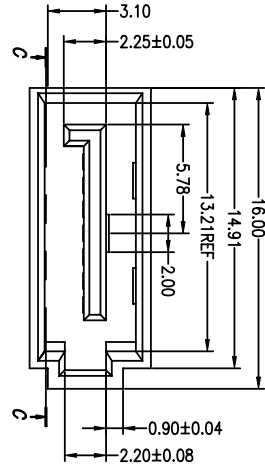


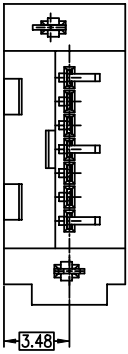
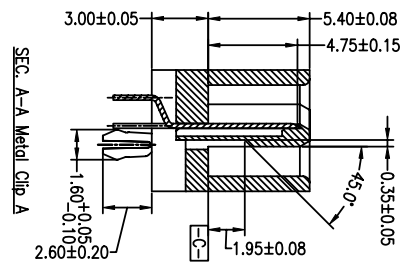
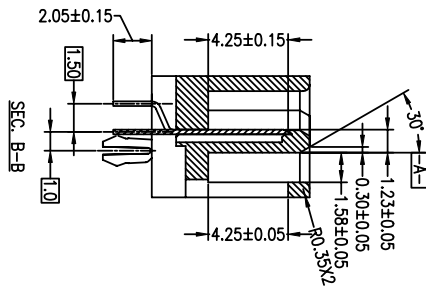
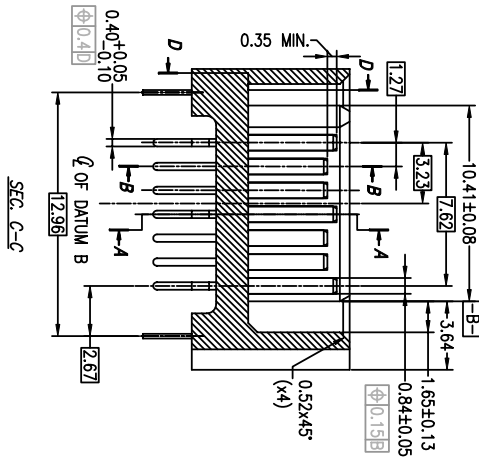
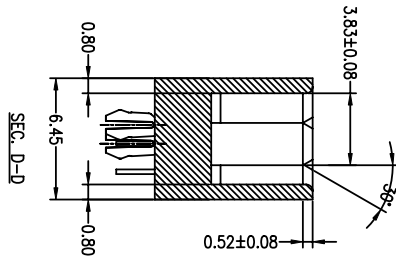
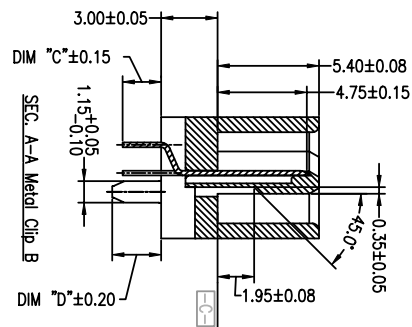




PRODUCT NO.10035690-XXX-4W



SUF-FIX	DIM C	DIM D
OTHERS	2.05MM	2.60MM
-XX4XLF	3.05MM	3.40MM



mat'l. code		tolerances unless otherwise specified		CUSTOMER COPY		FCI		title	
lit	ecn no	dr	date	X ± 0.30		projection		S-ATA SIGNAL PLUG	
A	T05-0213	W.L	09/09/05	.XX ± 0.20		MM		DIP VERTICAL TYPE ASSY	
B	T08-1033	S.Lin	02/29/08	.XXX ± 0.10		NA		product family SATA	
		angles	dr	0° ± 2°		scde		size dng no	
		engr	09/09/05					10035690	
		chr	09/09/05					code	
		appd	09/09/05					TWN	
sheet	revision	sheet	1	2	3			sheet	
index	sheet	index	1	2	3			2 of	

ACAD

3

code code

4

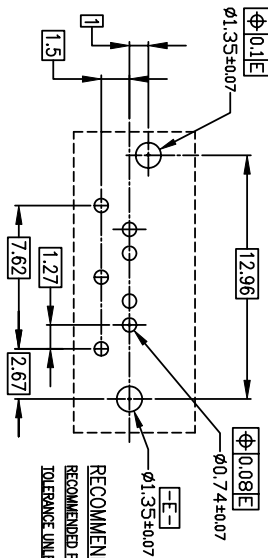
1 | 2

3

4



1 | 2



RECOMMENDED MOUNTING LAYOUT  
 RECOMMENDED PITCH = 1.80mm  
 TOLERANCE UNLESS OTHERWISE SPECIFIED

- 10035690-X-X-X-X
- LF: Plating Tin/Lead Free
  - 3W: 3 Wall
  - 4W: 4 Wall
  - 2: Metal clip A WITH 2.05 MM TAIL
  - 3: Metal clip B WITH 2.05 MM TAIL
  - 4: Metal clip B WITH 3.05 MM TAIL (4W ONLY)
- Au thickness of contact point  
 0: 15u" min  
 2: 3u" min  
 Housing Color  
 0: Black

3 |

4

A

- NOTES :
1. MATERIAL
    - i) HOUSING : HIGH TEMPERATURE THERMOPLASTIC UL94V-0
    - ii) TERMINAL : COPPER ALLOY
    - iii) HOLD DOWN : COPPER ALLOY
  2. FINISH
    - i) TERMINAL : Au PLATING AT CONTACT POINT  
 100u" min Sn-Pb or PURE TIN PLATING AT SOLDER TAIL WITH NICKEL UNDERPLATE
    - ii) HOLD DOWN : 100-200 u" Sn-Pb or PURE TIN PLATING.
  3. P/N : 10035690-XXXXLF  
 THE HOUSING WILL WITHSTAND EXPOSURE TO 260 DEGREE C PEAK TEMPERATURE FOR 10 SECONDS IN A WAVE SOLDER APPLICATION WITH 1.6MM MINIMUM THICK CIRCUIT BOARD.
  4. Packaging spec: GS-14-840.
  5. Product Spec: GS-12-194.

B

1 | 2

mat'l. code		tolerances unless otherwise specified		CUSTOMER COPY		title	
ltr	ecn no	dr	date	linear	projection	product family	SATA
A	T05-0213	W.L	09/09/05	.XX ± 0.20	MM	S-ATA SIGNAL PLUG	DIP VERTICAL TYPE ASS'Y
B	T08-1033	S.Lin	02/29/08	.XXX ± 0.10	scale	product family	SATA
		angles		0° ±2°		size	dwg no
		dr	09/09/05			code	TWN
		engr	09/09/05			sheet	3 of
		chr	09/09/05				
		appr	09/09/05				
sheet	revision						
index	sheet						

3 |

4

ACAD

code code