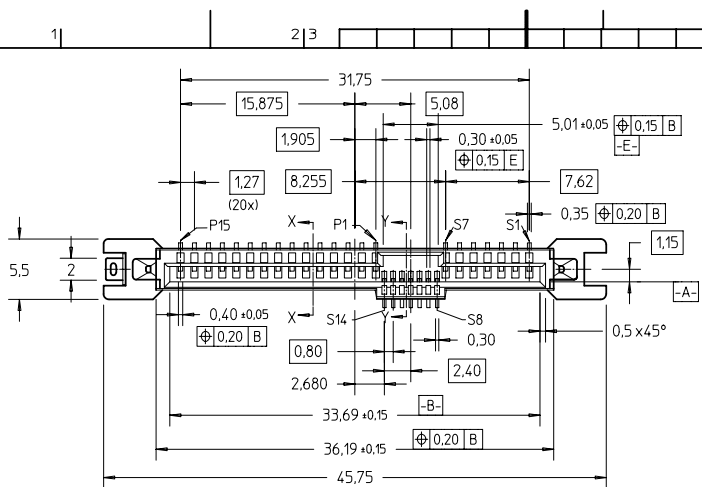
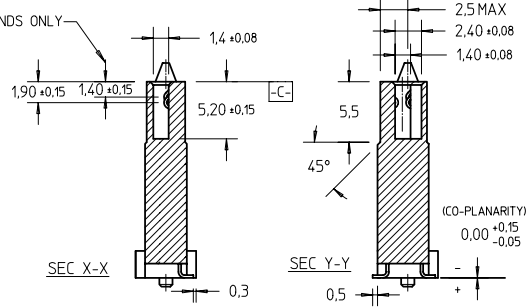
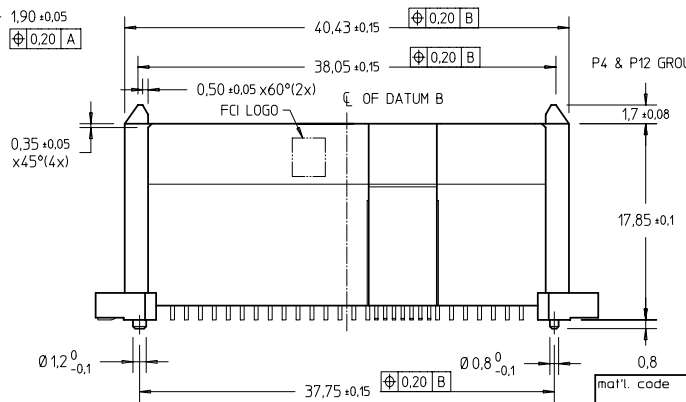
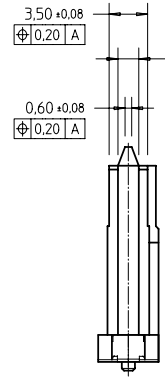


This document is the property of and embodies CONFIDENTIAL and PROPRIETARY information of FCI. No part of the information shown here may be disclosed, copied, or used in any way without the written consent of FCI. Copyright FCI.

PRODUCT NO  
SEE TABLE



- NOTES:**
- MATERIAL:**
    - HOUSING : HIGH TEMP TERMOPLASTIC, UL 94V-0  
COLOR : BLACK
    - TERMINAL : COPPER ALLOY
    - HOLD DOWN : COPPER ALLOY
  - FINISH :**
    - TERMINAL : 30u" Au PLATING (CONTACT POINT)  
OVER 50u" NICKEL
    - SOLDER TAIL : 100u" min Sn OVER 50u" NICKEL
    - HOLD DOWN : 100u" min Sn OVER 50u" NICKEL
    - PER SFF REV 1.1
    - THE STD PACKAGING IS IN TRAY

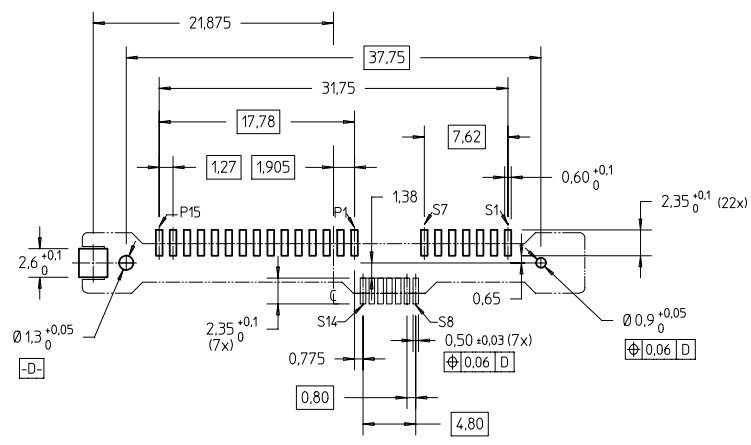


|                       |          |     |            |                                       |                               |                          |  |
|-----------------------|----------|-----|------------|---------------------------------------|-------------------------------|--------------------------|--|
| mat'l. code           |          |     |            | surface<br>ISO 1302                   | tolerance<br>ISO 406 ISO 1101 | projection               | product family   |
| tr ecn no dr date     |          |     |            | tolerances unless otherwise specified |                               | mm                       | SAS  |
| A                     | S04-0265 | GLL | 2004-12-15 | angles                                | linear                        | +0.20                    | title  |
| B                     | S06-0273 | GLL | 2006-10-20 | ± 2°                                  |                               | scale 2 : 1              | SAS RECEPTACLE EXTENDED<br>HEIGHT VERTICAL SMT TYPE ASSY |
| dr QL L00 2004-12-15  |          |     |            | engr QL L00 2004-12-15                |                               | dwg no sheet 1 of 2 size |  |
| chr QL L00 2006-10-20 |          |     |            | appd JOEY NG 2006-10-20               |                               | 10038334 A4              |  |
| sheet revision B 8    |          |     |            | index sheet 1 Z                       |                               | type CUSTOMER Drawing    |  |

FCI CONFIDENTIAL

This document is the property of and embodies CONFIDENTIAL and PROPRIETARY information of FCI. No part of the information shown here is to be disclosed, copied, reproduced, or otherwise used without the written consent of FCI. Copyright FCI.

| PRODUCT NO     | REMARKS   |
|----------------|-----------|
| 10038334-001LF | NOTE ⑥, ⑦ |



- NOTES : (Cont'd)
- 5 THE HOUSING WILL WITHSTAND EXPOSURE TO 260°C PEAK TEMPERATURE FOR 10 SECONDS IN A CONVECTION, INFRA-RED OR VAPOR PHASE REFLOW OVEN.
  - ⑥ THIS PRODUCT MEETS EUROPEAN UNION DIRECTIVES AND OTHER COUNTRY REGULATIONS AS DESCRIBED IN GS-22-008.
  - ⑦ PART NUMBERS ENDING IN "LF" MEANS FOR NOTE 6 LEAD FREE IDENTIFICATION. P/N XXXXXXXX-XXLF IS EQUIVALENT TO PREVIOUS P/N XXXXXXXX-XXX.

|             |  |  |  |  |  |  |  |   |  |
|-------------|--|--|--|--|--|--|--|---|--|
| mat'l. code |  | surface <input checked="" type="checkbox"/> ISO 1302 |  | tolerance <input checked="" type="checkbox"/> ISO 406 <input checked="" type="checkbox"/> ISO 1101 |  | projection <input checked="" type="checkbox"/> |  | product family SAS                                    |  |
| tr          |  | ecn no   |  | dr   |  | date   |  | title   |  |
| B           |  |  |  |  |  |  |  | SAS RECEPTACLE EXTENDED HEIGHT VERTICAL SMT TYPE ASSY |  |
|             |  |  |  |  |  |  |  | dwg no 10038334                                       |  |
|             |  |  |  |  |  |  |  | sheet 2 of 2 size A4                                  |  |
|             |  |  |  |  |  |  |  | type CUSTOMER Drawing                                 |  |
| sheet index |  | revision sheet                                       |  | 1  |  |  |  |   |  |

**PDM: Rev:B**      **STATUS: Released**      Printed: Jul 10, 2009