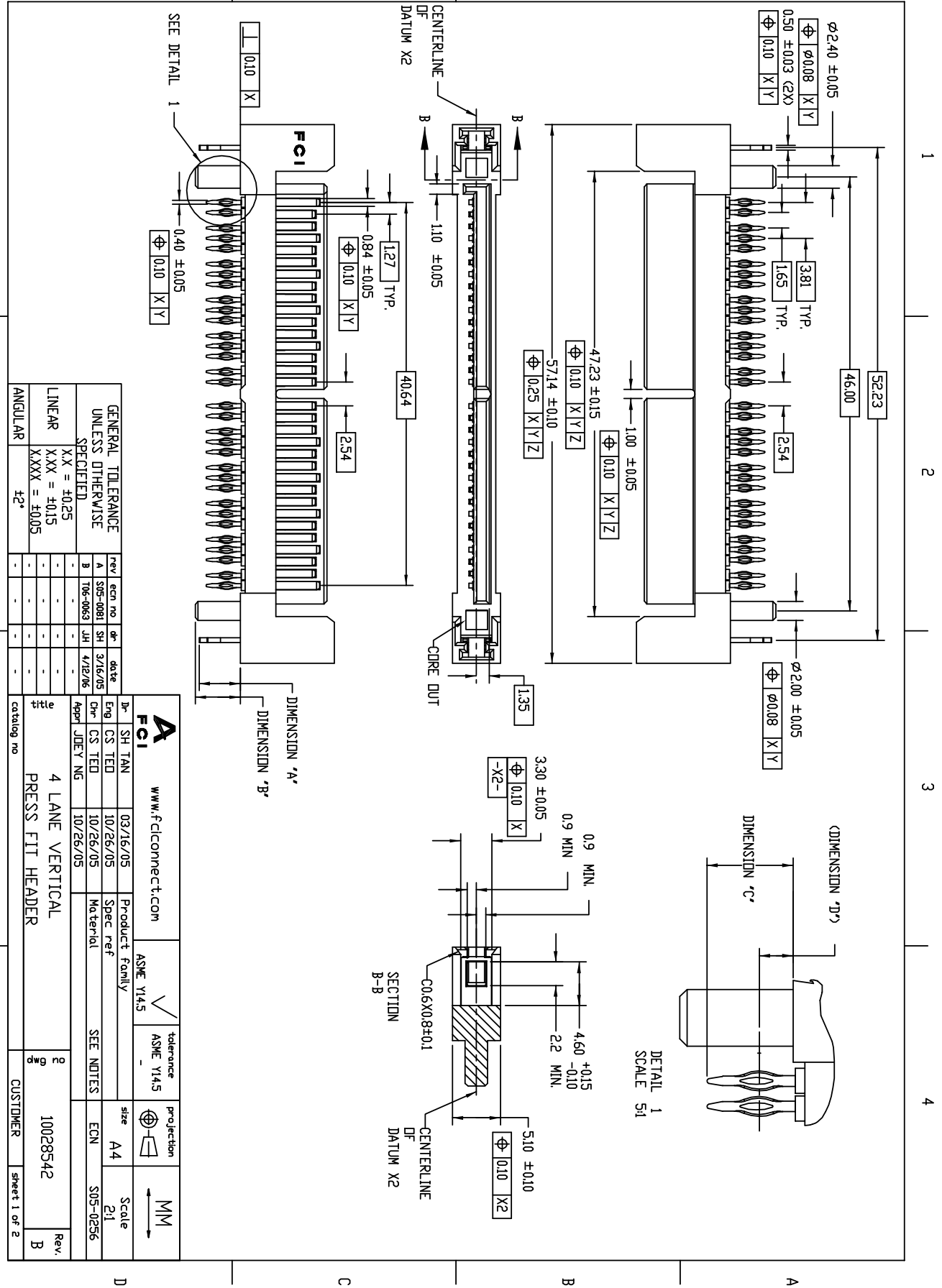


All rights strictly reserved. Reproduction or issue to third parties in any form whatever is not permitted without written authority from the proprietor. Property of FCI. Copyright FCI.



Tous droits strictement reserves. Reproduction ou communication a des tiers interdite sous quelque forme que ce soit sans autorisation ecrite du proprietaire. Propriete de c FCI. Droits de reproduction FCI.



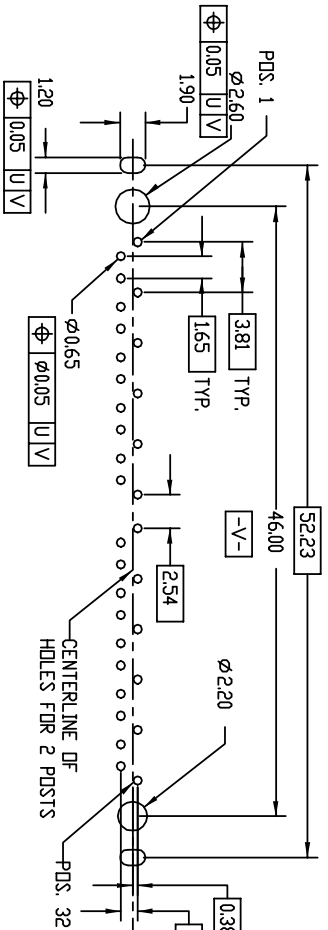
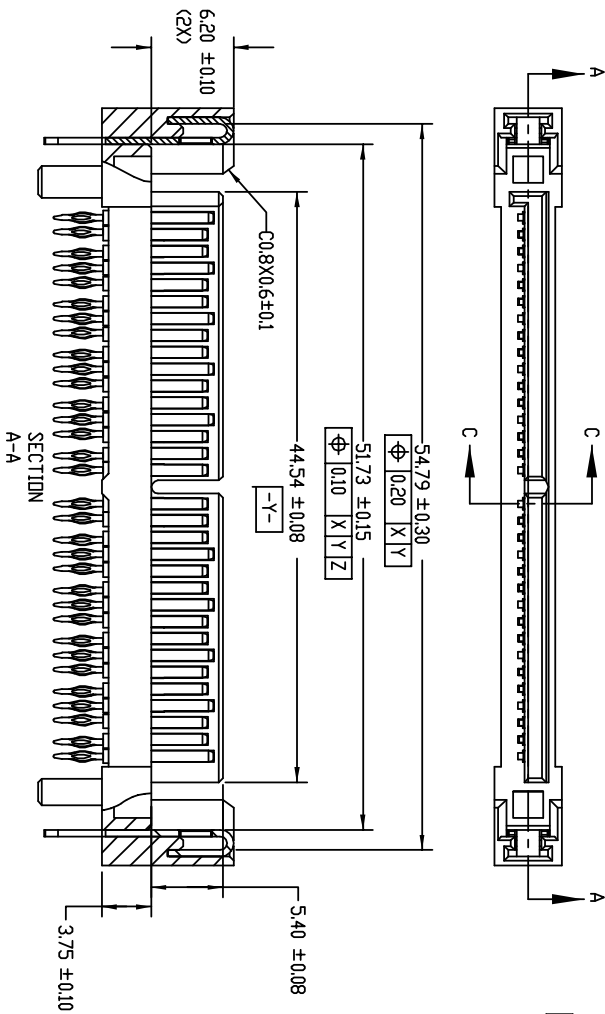
GENERAL TOLERANCE UNLESS OTHERWISE SPECIFIED		rev	ecn no	sh	date
A	S05-0081	SH	3/16/05		
B	106-0663	JH	4/12/06		
LINEAR		XX = ±0.25			
		XXX = ±0.15			
ANGULAR		XXXX = ±0.05			
		±2°			

Dr	SH TAN	03/16/05	Product family	ASME Y14.5	tolerance	ASME Y14.5	projection	MM
Eng	CS TED	10/26/05	Spec ref					
Chr	CS TED	10/26/05	Material					
Appr	JDEY NG	10/26/05	SEE NOTES					

4 LANE VERTICAL PRESS FIT HEADER	CU Gmp	10028542	Rev. B
CUSTOMER			
sheet 1 of 2			

1 2 3 4

PRODUCT NO.	PCB THICKNESS	DIMENSION 'A'	DIMENSION 'B'	DIMENSION 'C'	DIMENSION 'D'
10028542-001LF	1.57±0.10	2.75±0.20	3.20±0.10	3.65±0.10	1.43±0.10
10028542-002LF	3.18±0.10	4.35±0.20	4.80±0.10	3.65±0.10	1.43±0.10
10028542-003LF	1.57±0.10	2.75±0.20	3.20±0.10	2.10±0.10	0.79±0.10



RECOMMENDED PCB LAYOUT
(ALL TOLERANCES ARE ±0.05)

- NOTES
1. MATERIAL:
HOUSING: HIGH TEMPERATURE PLASTIC, BLACK OR GRAY, UL94V-0
CONTACT: COPPER ALLOY
HOLD DOWN: COPPER ALLOY
 2. FINISH:
1.27um MIN NICKEL UNDERPLATE OVERALL,
1.91um MIN TIN LEAD-FREED ON SOLDER TAIL,
0.76um MIN GOLD IN CONTACT AREA
 3. THIS PRODUCT MEETS EUROPEAN UNION DIRECTIVES AND OTHER COUNTRY REGULATIONS AS DESCRIBED IN GS-22-008
 4. THE HOUSING WILL WITHSTAND EXPOSURE TO 260°C PEAK TEMPERATURE FOR 10 SECONDS IN A CONVECTION, INFRARED OR VAPOR PHASE REFLUX OVEN
 5. CONTACT WIFE: 207 MIN FOR SIGNAL AND 2.52 MIN FOR GROUND

Rev. B	10028542	Customer	Sheet 2 of 2
4	3	2	1
4 LANE VERTICAL	PRESS FIT HEADER	CATALOG NO.	REV. B