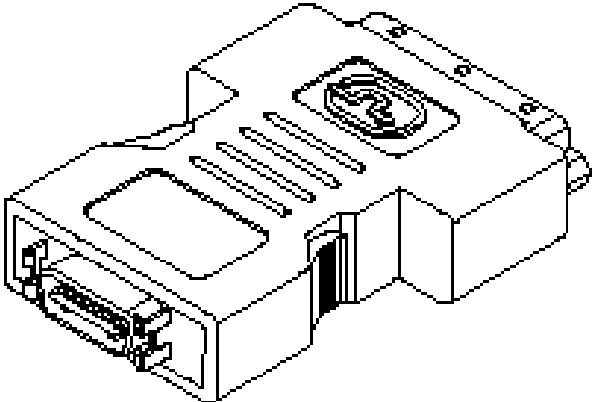


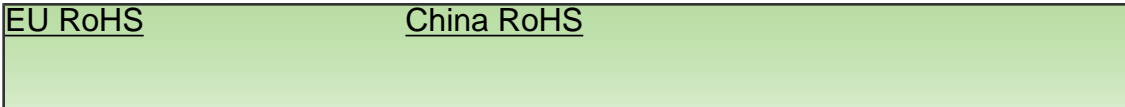
I/O Connectors Datasheet



Series image - Reference only

EU RoHS

China RoHS



ELV and RoHS Compliant

**Search Parts in this Series**

88744 Series

**Mates With**

74320 receptacles

**Part Number:** **0887419300**



**Status:** **Active**

**Description:** MicroCross™ DVI Digital Visual Interface, Shielded I/O Adapter, DVI-Digital Receptacle to DFP Plug

**Documents:**

- [Drawing \(PDF\)](#)
- [Related Catalog Page \(PDF\)](#)

**Order Products:**

-  [Check Distributor Inventory](#)
-  [Request Samples](#)

**Part Detail: [\(show all\)](#)**

- General**
- Physical**
- Electrical**
- Material Info**
- Reference - Drawing Numbers**

**General**

Product Family	I/O Connectors
Series	88744
Application	Wire-to-Board
Comments	DVI-Digital Receptacle to DFP Plug
Component Type	Adapter
Product Name	MicroCross™DVI
Type	N/A

**Physical**

Breakaway	No
Circuits (Loaded)	24
Circuits (maximum)	24
Color - Resin	Natural
Durability (mating cycles) min	100 cycles
Lock to Mating Part	Yes
Material - Metal	Steel
Material - Plating Mating	Gold
Material - Plating Termination	Tin
Material - Resin	High Temperature Thermoplastic
Number of Rows	3
Orientation	Vertical
PCB Retention	Yes
Packaging Type	Bag
Panel Mount	No
Pitch - Mating Interface (in)	0.075 In
Pitch - Mating Interface (mm)	1.90 mm
Plating min: Mating (uin)	2
Plating min: Mating (um)	0.05
Plating min: Termination (uin)	150
Plating min: Termination (um)	3.75
Polarized to Mating Part	Yes
Surface Mount Compatible (SMC)	N/A
Temperature Range - Operating	-20°C to +85°C
Termination Interface: Style	Through Hole
Wire Size AWG	N/A

**Electrical**

Current - Maximum	3.000 Amp
Shielded	Yes

Voltage - Maximum

40V

**Material Info**

**Reference - Drawing Numbers**

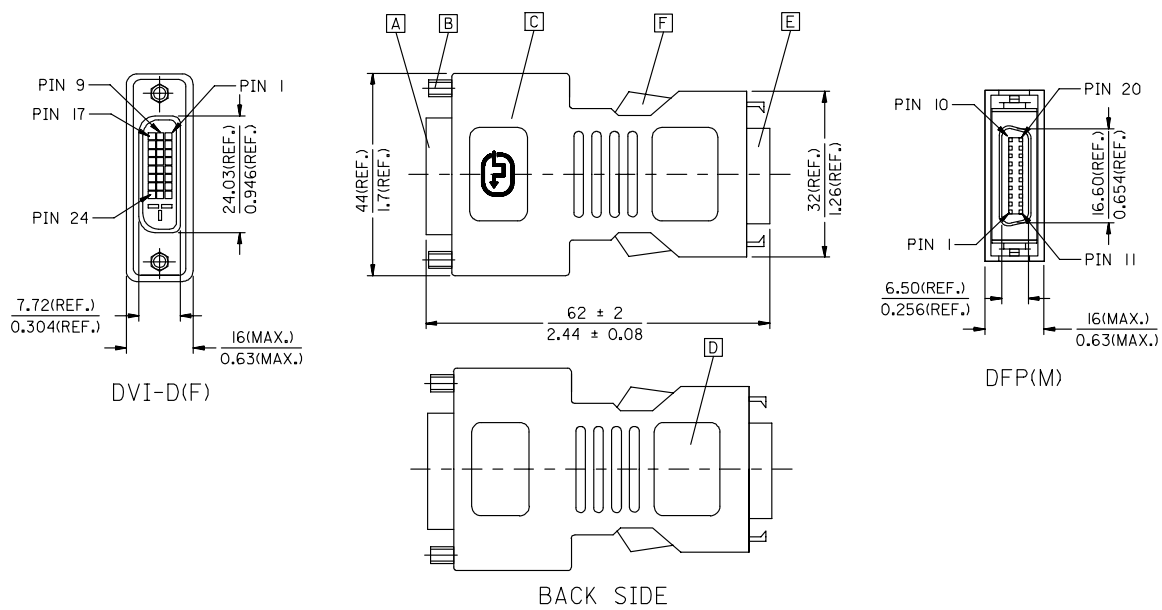
Sales Drawing

SD-88741-014

---

[Feedback](#)[Privacy](#)[Legal](#)[Site](#) [Map](#)[Help](#)

Copyright 2005-2008



ENTER DESCRIPTION EC NO: DG2006-0186 DRW: PDAI CHKD: CHYKD APPR: KAN 2006/03/09 2006/03/09 2006/03/10	DESCRIPTION REV	QUALITY SYMBOLS	GENERAL TOLERANCES (UNLESS SPECIFIED) <table border="1"> <thead> <tr> <th></th> <th>mm</th> <th>INCH</th> </tr> </thead> <tbody> <tr> <td>4 PLACES</td> <td>±---</td> <td>±---</td> </tr> <tr> <td>3 PLACES</td> <td>±---</td> <td>±---</td> </tr> <tr> <td>2 PLACES</td> <td>±---</td> <td>±---</td> </tr> <tr> <td>1 PLACE</td> <td>±---</td> <td>±---</td> </tr> <tr> <td colspan="3">ANGULAR ±---°</td> </tr> </tbody> </table>		mm	INCH	4 PLACES	±---	±---	3 PLACES	±---	±---	2 PLACES	±---	±---	1 PLACE	±---	±---	ANGULAR ±---°			DIMENSION STYLE	SCALE	DESIGN UNITS	THIRD ANGLE PROJECTION
				mm	INCH																				
		4 PLACES		±---	±---																				
		3 PLACES		±---	±---																				
2 PLACES	±---	±---																							
1 PLACE	±---	±---																							
ANGULAR ±---°																									
		▽=0 ▽=0	MM/IN	---	METRIC																				
		DRAFT WHERE APPLICABLE MUST REMAIN WITHIN DIMENSIONS	DRAWN BY PDAI DATE 2006/03/07	TITLE DVI_D(F)-DFP(M) ADAPTER																					
			CHECKED BY ZXDENG DATE 2006/03/07	MOLEX INCORPORATED																					
			APPROVED BY BORON DATE 2006/03/07	MATERIAL NO. 88741-9300	DOCUMENT NO. SD-88741-014	SHEET NO. 1 OF 2																			
			SIZE A4	THIS DRAWING CONTAINS INFORMATION THAT IS PROPRIETARY TO MOLEX INCORPORATED AND SHOULD NOT BE USED WITHOUT WRITTEN PERMISSION																					

ib\_frame\_A4\_P\_ME\_T  
Rev. D 2004/04/02

7 6 5 4 3 2 1

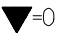
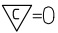

- NOTE: 1. PLASTIC COVER: SNOW WHITE UL GRADE ABS.  
 2. DVI CONNNECTOR SPECIFICATION  
 2.1 REFER TO PRODUCT SPEC. PS-74320-001  
 2.2 CONTACT PLATING: AU FLASH.  
 3. ELECTRICAL PERFORMANCE  
 3.1 INSULATION RESISANCE: 20 M Ohms Min  
 3.2 DIELECTRIC STRENGTH: 300V DC FOR 10 MILLISECONDS.  
 4. ADAPTOR SPECIFICATION  
 4.1 REFER TO PRODUCT SPEC. PS88741-8800.  
 5. THIS PRODUCT MUST MEET MX RoHS COMPLIANCE.

7. MATERIAL LIST

F	SNOW WHITE LATCH 887899305
E	DFP20 CONNECTOR 887899294
D	DVI(F) TO DFP(M) ADAPTER BOTTOM COVER 887899307
C	DVI(F) TO DFP(M) ADAPTER TOP COVER 887899302
B	DVID FEMALE SCREW 887806066
A	DVID FEMALE CONNECTOR 743207000
ITEM	DESCRIPTION

6. CONNECTION DIAGRAM

SHIELD	SHIEDL	GROUND
PIN 24	PIN 6	TMDS CLOCK-
PIN 23	PIN 5	TMDS CLOCK+
PIN 22	PIN 4	TMDS CLOCK SHIELD
PIN 19	PIN 14	TMDS DATA 0 SHIELD
PIN 18	PIN 15	TMDS DATA 0+
PIN 17	PIN 16	TMDS DATA 0-
PIN 16	PIN 18	HOT PLUG DETECT
PIN 15	PIN 7	GROUND(+5V & HV SYNC.)
PIN 14	PIN 8	POWER +5V
PIN 11	PIN 3	TMDS DATA 1 SHIELD
PIN 10	PIN 1	TMDS DATA 1+
PIN 9	PIN 2	TMDS DATA 1-
PIN 7	PIN 19	DDC DATA
PIN 6	PIN 20	DDC CLOCK
PIN 3	PIN 13	TMDS DATA 2 SHIELD
PIN 2	PIN 11	TMDS DATA 2+
PIN 1	PIN 12	TMDS DATA 2-
DVI_D(F)	DFP(M)	CABLE FUNCTION

ENTER DESCRIPTION EC NO: DG2006-0186 DRW: PDAI CHKD: CHYD APPR: KAN 2006/03/09 2006/03/09 2006/03/10	QUALITY SYMBOLS  = 0  = 0	GENERAL TOLERANCES (UNLESS SPECIFIED)		DIMENSION STYLE MM/IN	SCALE ---	DESIGN UNITS METRIC	 THIRD ANGLE PROJECTION	
		4 PLACES ±--- ±---	DRAWN BY PDAI	DATE 2006/03/07	TITLE DVI_D(F)-DFP(M) ADAPTER			
		3 PLACES ±--- ±---	CHECKED BY ZXDENG	DATE 2006/03/07	MOLEX INCORPORATED			
		2 PLACES ±--- ±--- 1 PLACE ±--- ±--- ANGULAR ±---°	APPROVED BY BORON	DATE 2006/03/07	MATERIAL NO. 88741-9300	DOCUMENT NO. SD-88741-014	SHEET NO. 2 OF 2	
DRAFT WHERE APPLICABLE MUST REMAIN WITHIN DIMENSIONS		THIS DRAWING CONTAINS INFORMATION THAT IS PROPRIETARY TO MOLEX INCORPORATED AND SHOULD NOT BE USED WITHOUT WRITTEN PERMISSION						

ib\_frame\_A4\_P\_ME\_T  
 Rev. D 2004/04/02

6 5 4 3 2 1