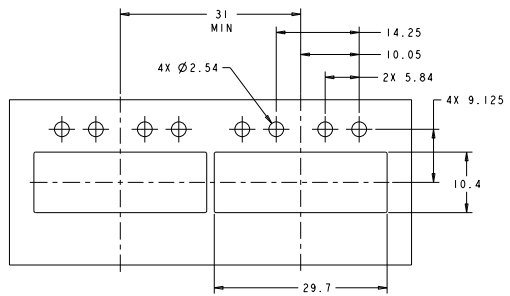
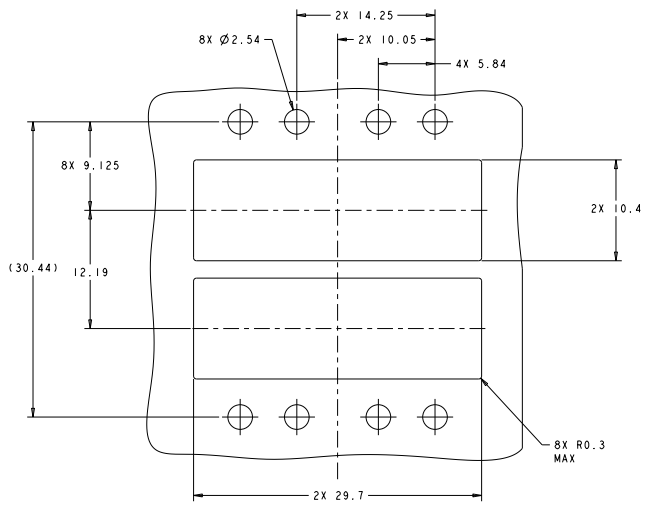




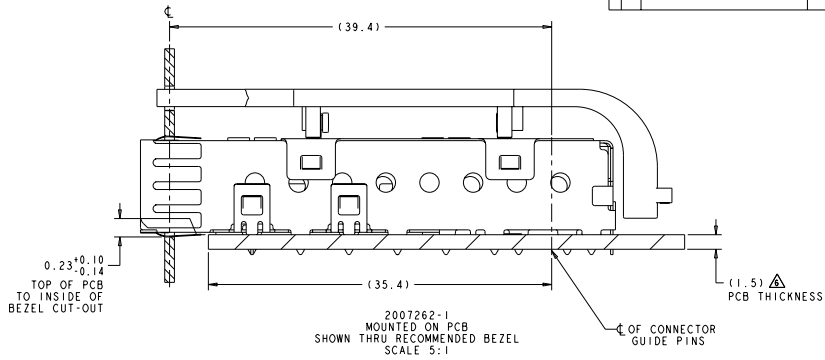
REVISOR		REVISIONS	DATE	BY	CHK
GP	00	SEE SHEET 1			



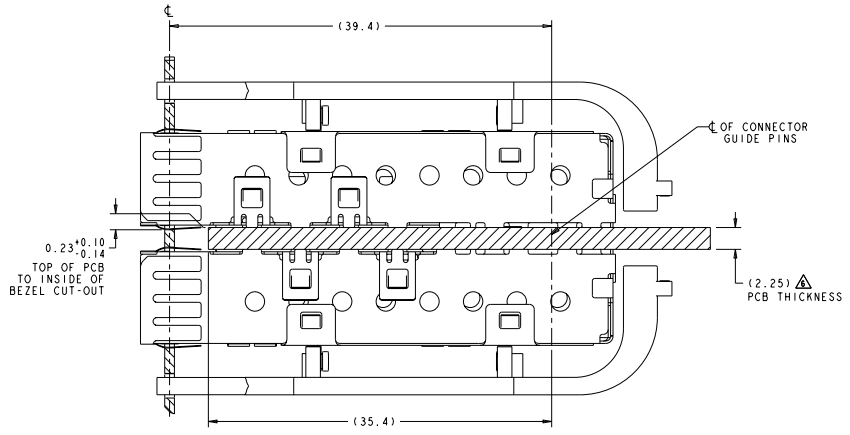
RECOMMENDED BEZEL CUT-OUT  
 SINGLE SIDED APPLICATIONS  
 SCALE 3:1



RECOMMENDED BEZEL CUT-OUT  
 BELLY TO BELLY APPLICATIONS  
 SCALE 5:1



2007262-1  
 MOUNTED ON PCB  
 SHOWN THRU RECOMMENDED BEZEL  
 SCALE 5:1

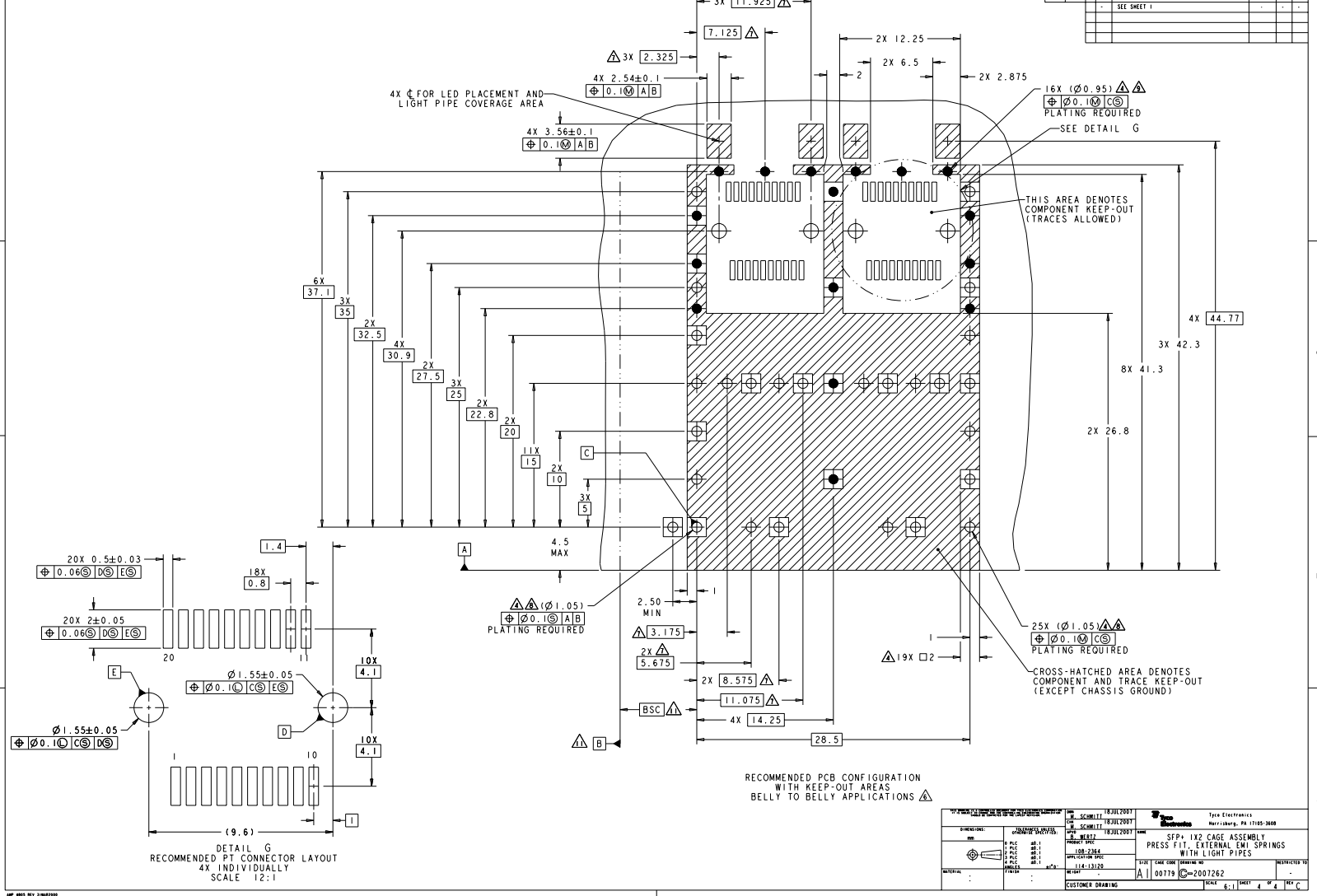


2007262-1  
 MOUNTED BELLY TO BELLY ON PCB  
 SHOWN THRU RECOMMENDED BEZEL  
 SCALE 5:1

DATE: 18 JUL 2007	BY: SCHELL	CHK: SCHELL	DATE: 18 JUL 2007	BY: SCHELL	CHK: SCHELL
REV: 00	REV: 00	REV: 00	REV: 00	REV: 00	REV: 00
DESCRIPTION: SFP-1X2 CAGE ASSEMBLY	DESCRIPTION: SFP-1X2 CAGE ASSEMBLY	DESCRIPTION: SFP-1X2 CAGE ASSEMBLY	DESCRIPTION: SFP-1X2 CAGE ASSEMBLY	DESCRIPTION: SFP-1X2 CAGE ASSEMBLY	DESCRIPTION: SFP-1X2 CAGE ASSEMBLY
100-2264	100-2264	100-2264	100-2264	100-2264	100-2264
00778	00778	00778	00778	00778	00778
00778	00778	00778	00778	00778	00778



REV	DATE	DESCRIPTION	BY	CHK	APP
00		SEE SHEET 1			



DETAIL G  
 RECOMMENDED PT CONNECTOR LAYOUT  
 4X INDIVIDUALLY  
 SCALE 12:1

DATE: 07/18/2007	BY: SCHMITZ	DATE: 07/18/2007	BY: SCHMITZ	DATE: 07/18/2007	BY: SCHMITZ
REV: 00	REV: 00	REV: 00	REV: 00	REV: 00	REV: 00
DESCRIPTION: SFP-1X2 CAGE ASSEMBLY	DESCRIPTION: SFP-1X2 CAGE ASSEMBLY	DESCRIPTION: SFP-1X2 CAGE ASSEMBLY	DESCRIPTION: SFP-1X2 CAGE ASSEMBLY	DESCRIPTION: SFP-1X2 CAGE ASSEMBLY	DESCRIPTION: SFP-1X2 CAGE ASSEMBLY
DATE: 07/18/2007	DATE: 07/18/2007	DATE: 07/18/2007	DATE: 07/18/2007	DATE: 07/18/2007	DATE: 07/18/2007
BY: SCHMITZ	BY: SCHMITZ	BY: SCHMITZ	BY: SCHMITZ	BY: SCHMITZ	BY: SCHMITZ
DATE: 07/18/2007	DATE: 07/18/2007	DATE: 07/18/2007	DATE: 07/18/2007	DATE: 07/18/2007	DATE: 07/18/2007
BY: SCHMITZ	BY: SCHMITZ	BY: SCHMITZ	BY: SCHMITZ	BY: SCHMITZ	BY: SCHMITZ
DATE: 07/18/2007	DATE: 07/18/2007	DATE: 07/18/2007	DATE: 07/18/2007	DATE: 07/18/2007	DATE: 07/18/2007
BY: SCHMITZ	BY: SCHMITZ	BY: SCHMITZ	BY: SCHMITZ	BY: SCHMITZ	BY: SCHMITZ