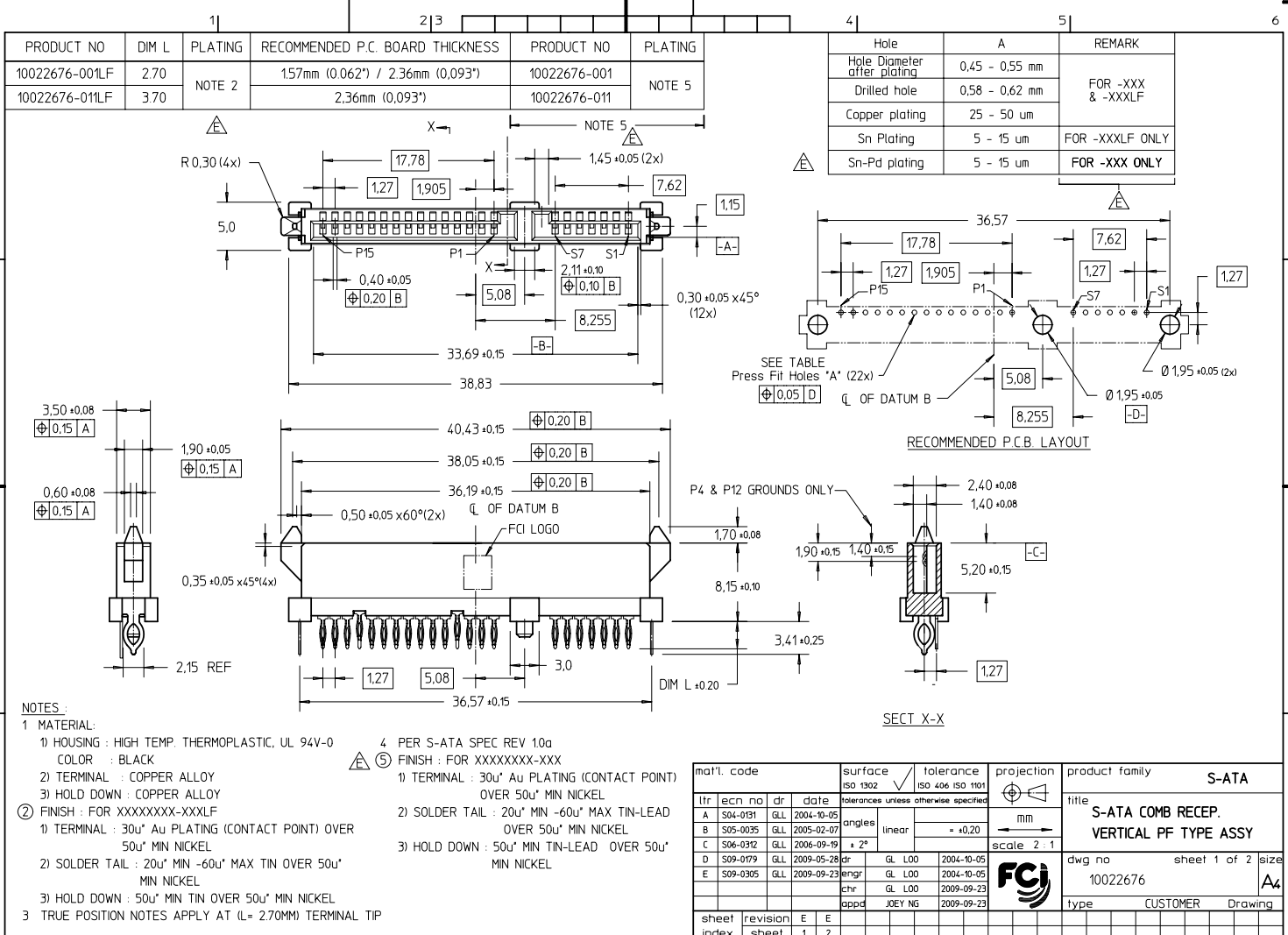


FCI CONFIDENTIAL

FCI  
FCIconnect.com

This document is the property of and embodies CONFIDENTIAL and PROPRIETARY information of FCI. No part of the information shown on this drawing is to be disclosed, copied, or otherwise used without the written consent of FCI. Copyright FCI.



- NOTES:**
- 1) MATERIAL:
    - 1) HOUSING : HIGH TEMP. THERMOPLASTIC, UL 94V-0 COLOR : BLACK
    - 2) TERMINAL : COPPER ALLOY
    - 3) HOLD DOWN : COPPER ALLOY
  - 2) FINISH : FOR XXXXXXXX-XXXLF
    - 1) TERMINAL : 30u" Au PLATING (CONTACT POINT) OVER 50u" MIN NICKEL
    - 2) SOLDER TAIL : 20u" MIN -60u" MAX TIN OVER 50u" MIN NICKEL
    - 3) HOLD DOWN : 50u" MIN TIN OVER 50u" MIN NICKEL
  - 3) TRUE POSITION NOTES APPLY AT (L= 2.70MM) TERMINAL TIP
  - 4 PER S-ATA SPEC REV 10a
    - 5) FINISH : FOR XXXXXXXX-XXX
      - 1) TERMINAL : 30u" Au PLATING (CONTACT POINT) OVER 50u" MIN NICKEL
      - 2) SOLDER TAIL : 20u" MIN -60u" MAX TIN-LEAD OVER 50u" MIN NICKEL
      - 3) HOLD DOWN : 50u" MIN TIN-LEAD OVER 50u" MIN NICKEL

Hole	A	REMARK
Hole Diameter after plating	0.45 - 0.55 mm	FOR -XXX & -XXXLF
Drilled hole	0.58 - 0.62 mm	
Copper plating	25 - 50 um	FOR -XXXLF ONLY
Sn Plating	5 - 15 um	FOR -XXX ONLY
Sn-Pd plating	5 - 15 um	FOR -XXX ONLY

tr	ecn no	dr	date	surface	tolerance	projection	product family
A	S04-0131	GLL	2004-10-05	ISO 1302	ISO 406 ISO 1101		S-ATA
B	S05-0035	GLL	2005-02-07	tolerances unless otherwise specified			
C	S04-0312	GLL	2006-09-19	angles	linear	mm	
D	S09-0179	GLL	2009-05-28	± 2°	= ±0.20	scale 2 : 1	
E	S09-0305	GLL	2009-09-23	engr	chr		
				appd	JOEY NG		

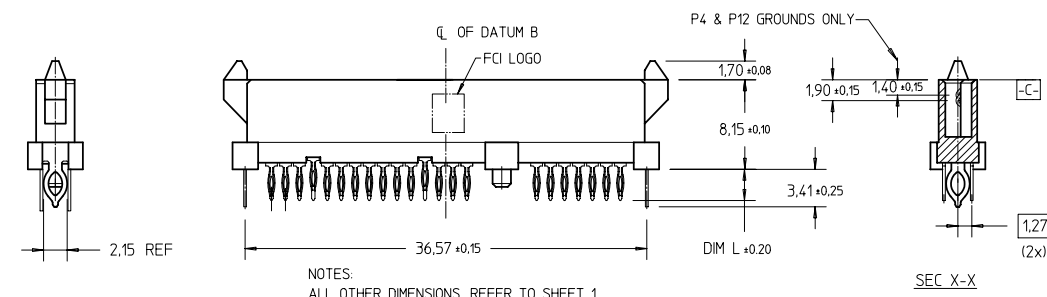
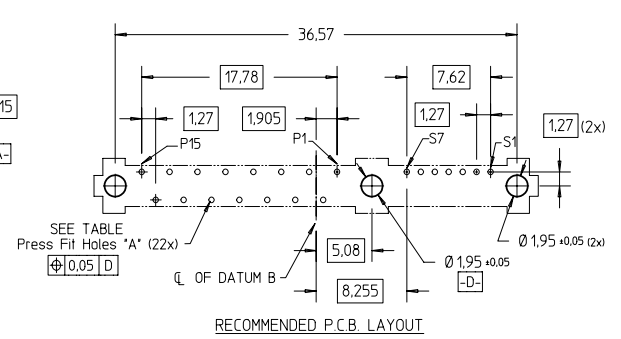
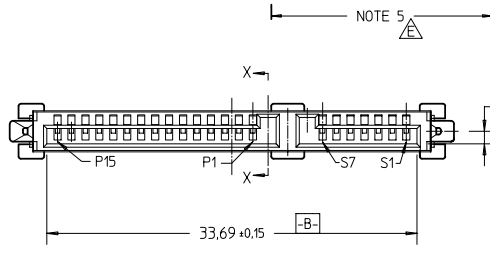
PDM: Rev:E STATUS:Released Printed: Sep 28, 2009

FCI CONFIDENTIAL



This document is the property of and embodies CONFIDENTIAL and PROPRIETARY information of FCI. No part of the information shown here may be disclosed, copied, or otherwise used in any way without the written consent of FCI. Copyright © FCI.

PRODUCT NO	DIM L	PLATING	RECOMMENDED P.C. BOARD THICKNESS	PRODUCT NO	PLATING
10022676-002LF	2.70	NOTE 2	1.57mm (0.062") / 2.36mm (0.093")	10022676-002	NOTE 5
10022676-012LF	3.70		2.36mm (0.093")	10022676-012	



NOTES:  
ALL OTHER DIMENSIONS, REFER TO SHEET 1.

- NOTES :
- 6 THE HOUSING WILL WITHSTAND EXPOSURE TO 260°C PEAK TEMPERATURE FOR 10 SECONDS IN A CONVECTION, INFRA-RED OR VAPOR PHASE REFLOW OVEN.
  - 7 THIS PRODUCT MEETS EUROPEAN UNION DIRECTIVES AND OTHER COUNTRY REGULATIONS AS DESCRIBED IN GS-22-008.
  - 8 PART NUMBERS ENDING IN 'LF' MEANS FOR NOTE 7 LEAD FREE IDENTIFICATION.
  - 9 A  $\triangle$  SYMBOL WILL BE NEXT TO ANY DIMENSION, VIEW, OR NOTE WHICH HAS BEEN MODIFIED WITH THE CURRENT DRAWING REVISION.
  - 10 THE STD PACKAGING IS IN TRAY.
  - 11 NOTE 7 AND 8 DO NOT APPLY TO TIN LEAD PLATING P/N XXXXXXXX-XXX IN TABLE.

mat'l. code		surface	tolerance	projection	product family
itr	ecm no	iso 1302	iso 406 iso 1101	$\phi$	S-ATA
dr	date	tolerances unless otherwise specified		mm	title
		angles	linear	scale 2:1	S-ATA COMB RECEP. VERTICAL PF TYPE ASSY
		$\pm 2^\circ$	$\pm 0.20$		dwg no
		dr	QL L00	2004-10-05	10022676
		engr	QL L00	2004-10-05	sheet 2 of 2 size
		chr	QL L00	2009-09-23	A4
		appd	JOEY NG	2009-09-23	type
					CUSTOMER Drawing
sheet index	revision sheet	1			

PDM: Rev:E STATUS:Released Printed: Sep 26, 2009