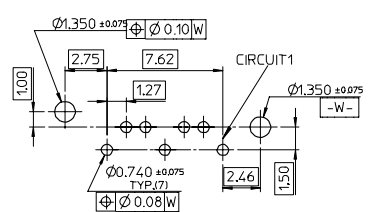
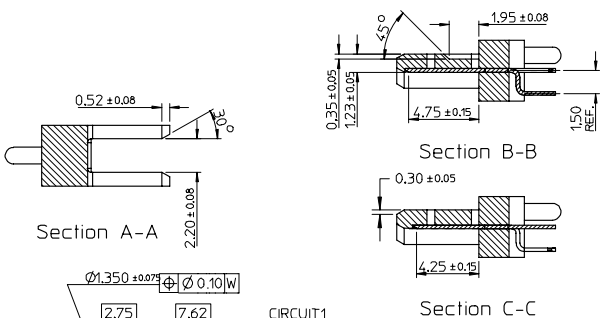
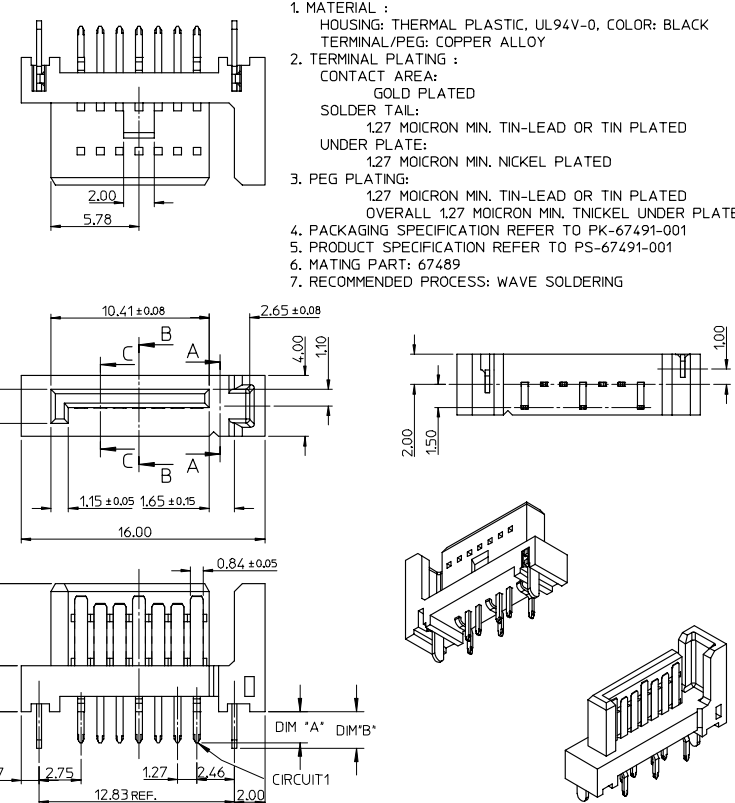


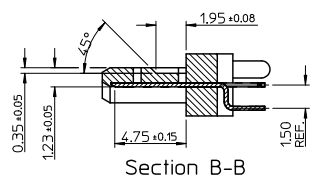
P/N	CONTACT PLATING TYPE	*A*	*B*	PCB THICKNESS	SOLDERING PLATE
67491-0030	GOLD FLASH	2.05	2.40	1.60	TIN-LEAD
67491-0031	0.76 MICRON GOLD PLATED				
67491-0032	0.38 MICRON GOLD PLATED				
67491-0035	GOLD FLASH				
67491-0036	0.76 MICRON GOLD PLATED	2.35	2.40	2.00	
67491-0037	0.38 MICRON GOLD PLATED				
67491-0038	GOLD FLASH	3.00	3.20	2.40	
67491-0039	0.76 MICRON GOLD PLATED				
67491-0040	0.38 MICRON GOLD PLATED				
67491-1030	GOLD FLASH	2.05	2.40	1.60	PURE TIN
67491-1031	0.76 MICRON GOLD PLATED				
67491-1032	0.38 MICRON GOLD PLATED				
67491-1035	GOLD FLASH				
67491-1036	0.76 MICRON GOLD PLATED	2.35	2.40	2.00	
67491-1037	0.38 MICRON GOLD PLATED				
67491-1038	GOLD FLASH	3.00	3.20	2.40	
67491-1039	0.76 MICRON GOLD PLATED				
67491-1040	0.38 MICRON GOLD PLATED				

NOTES:
 1. MATERIAL :
 HOUSING: THERMAL PLASTIC, UL94V-0, COLOR: BLACK
 TERMINAL/PEG: COPPER ALLOY
 2. TERMINAL PLATING :
 CONTACT AREA:
 GOLD PLATED
 SOLDER TAIL:
 1.27 MOICRON MIN. TIN-LEAD OR TIN PLATED
 UNDER PLATE:
 1.27 MOICRON MIN. NICKEL PLATED
 3. PEG PLATING:
 1.27 MOICRON MIN. TIN-LEAD OR TIN PLATED
 OVERALL 1.27 MOICRON MIN. TNICKEL UNDER PLATED
 4. PACKAGING SPECIFICATION REFER TO PK-67491-001
 5. PRODUCT SPECIFICATION REFER TO PS-67491-001
 6. MATING PART: 67489
 7. RECOMMENDED PROCESS: WAVE SOLDERING

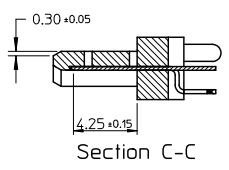
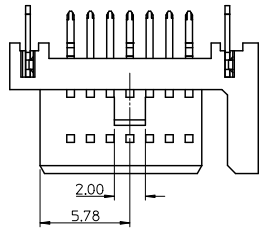


EC NO: SH2005-0049 DRWN:GRMA 2004/09/07 CHKD:GRATE M000/09/07 APPR: YTYAP 2004/09/10	QUALITY SYMBOLS	GENERAL TOLERANCES (UNLESS SPECIFIED)	SCALE 4:1	DESIGN UNITS METRIC	THIRD ANGLE PROJECTION	REVISE ON CAD ONLY	
	0 0	4 PLACES ± --- ± --- 3 PLACES ± --- ± --- 2 PLACES ± 0.15 ± --- 1 PLACE ± 0.25 ± --- ANGULAR ± 3°	mm INCH DIMENSION STYLE MM ONLY	DRAWN BY RICHARD	DATE '01/06/21	TITLE	1.27MM HIGH SPEED SERIAL PLUG VERTICLE TYPE
	DRAFT WHERE APPLICABLE	MUST REMAIN WITHIN DIMENSIONS	CHECKED BY VINCENT	DATE '01/06/21	MATERIAL NO. SEE TABLE	DOCUMENT NO. SD-67491-002	
			APPROVED BY ERIC	DATE '01/06/21		SHEET NO. 1 OF 1	
			THIS DRAWING CONTAINS INFORMATION THAT IS PROPRIETARY TO MOLEX INCORPORATED AND SHOULD NOT BE USED WITHOUT WRITTEN PERMISSION				A3

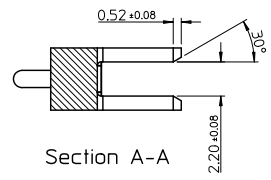
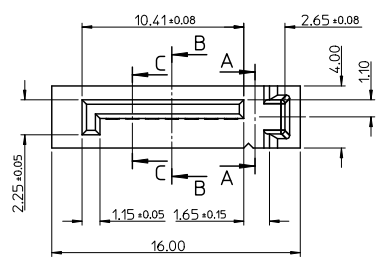
10 9 8 7 6 5 4 3 2 1



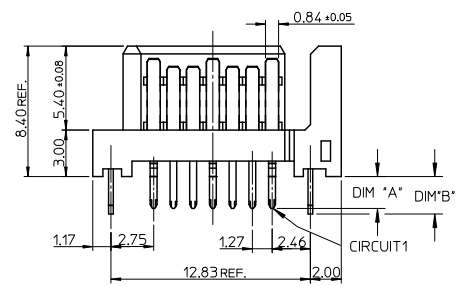
Section B-B



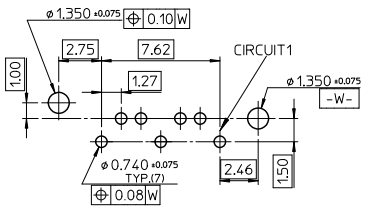
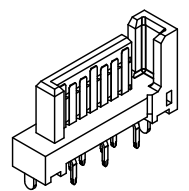
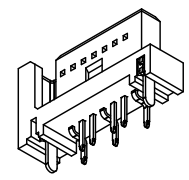
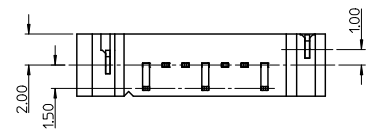
Section C-C



Section A-A



- NOTES:
- MATERIAL:
HOUSING: SEE TABLE, UL94V-0, COLOR: BLACK OR BULE (SEE P/N TABLE)
TERMINAL/PEG: COPPER ALLOY
 - TERMINAL PLATING :
CONTACT AREA: GOLD PLATED
SOLDER TAIL: 1.27 MICRON MIN. TIN PLATED
UNDER PLATE: 1.27 MICRON MIN. NICKEL PLATED
 - PEG PLATING:
1.27 MICRON MIN. TIN PLATED
OVERALL 1.27 MICRON MIN. NICKEL UNDER PLATED
 - PACKAGING SPECIFICATION REFER TO PK-67491-001
 - PRODUCT SPECIFICATION REFER TO PS-67491-001
 - MATING PART: 67489
 - RECOMMENDED PROCESS: WAVE SOLDERING
 - PRODUCT COMPLIANT TO RoHS DIRECTIVE 2002/95/EC AND ELV DIRECTIVE 2000/53/EC



RECOMMENDED P.C.B. LAYOUT t=1.6mm OR 2.0mm

OBSOLETE PARTS EC NO: SH2011-0104 DRAWING NO: 2010/10/22 CHKD: CHYKD APPR: RZHANG REV	DESCRIPTION 2010/11/03	QUALITY SYMBOLS	GENERAL TOLERANCES (UNLESS SPECIFIED)	DIMENSION STYLE	SCALE	DESIGN UNITS	THIRD ANGLE PROJECTION	
		▽=0	mm INCH	MM ONLY	4:1	METRIC	⊙ □	
		▽=0	4 PLACES ± --- ± ---	DRAWN BY DATE	1.27MM HIGH SPEED SERIAL PLUG VERTICAL TYPE			
		▽=0	3 PLACES ± --- ± ---	RICHARD '01/06/21	MOLEX INCORPORATED			
		2 PLACES ± 0.15 ± ---	CHECKED BY DATE	SD-67491-002				
		1 PLACE ± 0.25 ± ---	VINCENT '01/06/21	SHEET NO. 1 OF 2				
		ANGULAR ± 3°	APPROVED BY DATE	THIS DRAWING CONTAINS INFORMATION THAT IS PROPRIETARY TO MOLEX INCORPORATED AND SHOULD NOT BE USED WITHOUT WRITTEN PERMISSION				
			RZHANG 2010/11/03					
		DRAFT WHERE APPLICABLE MUST REMAIN WITHIN DIMENSIONS	MATERIAL NO.					
			SEE CHART IN SHEET 2					
			SIZE A					

	10	9	8	7	6	5	4	3	2	1	
	P/N	CONTACT PLATING TYPE	*A*	*B*	PCB THICKNESS	SOLDERING PLATE	COLOR	PLASTIC TYPE			
F	67491-1030	GOLD FLASH	2.05	2.40	1.60	PURE TIN	BLACK	THERMAL PLASTIC			
	67491-1031	0.76 MICRON GOLD PLATED									
	67491-1032	0.38 MICRON GOLD PLATED									
67491-1035	GOLD FLASH										
67491-1036	0.76 MICRON GOLD PLATED										
67491-1037	0.38 MICRON GOLD PLATED										
E	67491-1038	GOLD FLASH	3.00	3.20	2.40		PURE TIN	BLACK	THERMAL PLASTIC		
	67491-1039	0.76 MICRON GOLD PLATED									
	67491-1040	0.38 MICRON GOLD PLATED									
D	67491-2031	0.76 MICRON GOLD PLATED	2.05	2.40	1.60		PURE TIN	BLUE PENTONE NO.293C $\Delta E < 3$	THERMAL PLASTIC		
	67491-2032	0.38 MICRON GOLD PLATED									
	67491-2035	GOLD FLASH									
67491-2036	0.76 MICRON GOLD PLATED										
67491-2037	0.38 MICRON GOLD PLATED										
67491-2038	GOLD FLASH										
C	67491-2039	0.76 MICRON GOLD PLATED	3.00	3.20	2.40	PURE TIN		BLACK	HIGH TEMPERATURE THERMAL PLASTIC		
	67491-2040	0.38 MICRON GOLD PLATED									
	67491-1130	GOLD FLASH									
67491-1131	0.76 MICRON GOLD PLATED										
67491-1132	0.38 MICRON GOLD PLATED										
A	67491-1135	GOLD FLASH	2.35	2.40	2.00		PURE TIN			BLACK	HIGH TEMPERATURE THERMAL PLASTIC
	67491-1136	0.76 MICRON GOLD PLATED									
	67491-1137	0.38 MICRON GOLD PLATED									
	67491-1138	GOLD FLASH									
	67491-1139	0.76 MICRON GOLD PLATED									
67491-1140	0.38 MICRON GOLD PLATED										

OBsolete PARTS EC NO: SH2011-0104 DRWNG: GLLI CHKD: RZHANG APPR: RZHANG 2010/10/22 2010/11/03 DESCRIPTION REV	QUALITY SYMBOLS	GENERAL TOLERANCES (UNLESS SPECIFIED)	DIMENSION STYLE	SCALE	DESIGN UNITS	THIRD ANGLE PROJECTION
	$\nabla=0$	mm INCH	MM ONLY	4:1	METRIC	
	$\nabla=0$	4 PLACES ± --- ± ---	DRAWN BY DATE	TITLE		
	$\nabla=0$	3 PLACES ± --- ± ---	RICHARD '01/06/21	1.27MM HIGH SPEED SERIAL PLUG VERTICAL TYPE		
	2 PLACES ± 0.15 ± ---	CHECKED BY DATE	MOLEX INCORPORATED			
	1 PLACE ± 0.25 ± ---	VINCENT '01/06/21	SD-67491-002			
	ANGULAR ± 3°	APPROVED BY DATE	SHEET NO.			
	DRAFT WHERE APPLICABLE MUST REMAIN WITHIN DIMENSIONS	RZHANG 2010/11/03	2 OF 2			
		MATERIAL NO.	DOCUMENT NO.			
		SEE CHART	THIS DRAWING CONTAINS INFORMATION THAT IS PROPRIETARY TO MOLEX INCORPORATED AND SHOULD NOT BE USED WITHOUT WRITTEN PERMISSION			

tb_frame_A3_P_AM_T
Rev. F 2009/06/18