

4

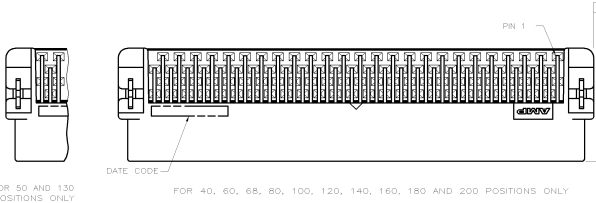
3

2

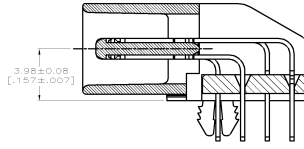
1

THIS DRAWING IS UNPUBLISHED. RELEASED FOR PUBLICATION AUG. 2006.
 COPYRIGHT - BY TYCO ELECTRONICS CORPORATION. ALL RIGHTS RESERVED.

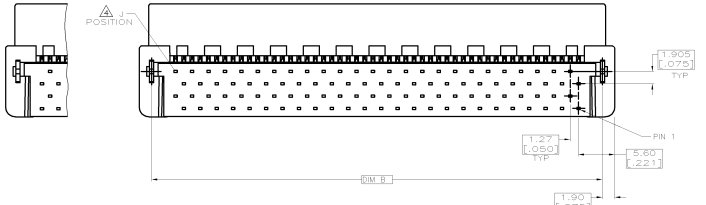
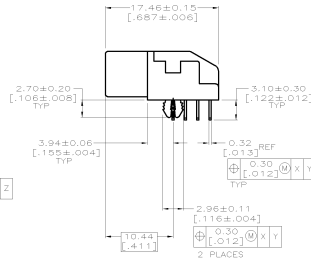
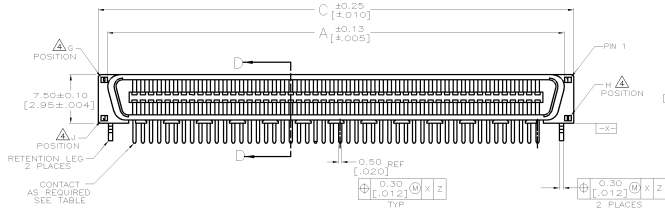
LOC	DIST	REVISIONS			
P	LTR	DESCRIPTION	DATE	DWN	APVD
		REVISED. (ECR-10-026339)	23MAY11	JC	WK



FOR 50 AND 130 POSITIONS ONLY
 FOR 40, 60, 68, 80, 100, 120, 140, 160, 180 AND 200 POSITIONS ONLY



SECTION D-D
SCALE 8:1



- NOTE:
 1. MATERIAL:
 HOUSING: LCP, UL 94V-0, BLACK COLOR.
 CONTACTS: PHOSPHOR BRONZE.
 BOARDLOCKS: BRASS.
 FINISH:
 CONTACTS: (SEE TABLE) GOLD PLATED ON CONTACT AREA,
 3.81µm [150µ"] MIN. MATTE-TIN ON SOLDERTAIL, OVER
 1.27µm [50µ"] MIN. NICKEL UNDERPLATED.
 BOARDLOCKS: 3.81µm [150µ"] MIN. TIN-CU OVER
 1.27µm [50µ"] MIN. UNDERPLATED.
 3. WAVE SOLDER CAPABLE TO 265°C PER TEST SPEC.
 Q, J, H INDICATE NUMBER OF POSITION MARKED ON ASSEMBLY.
 ALSO SEE TABLE.
 GOLD FLASH OVER
 0.762µm [30µ"] MIN. PALLADIUM-NICKEL PLATED.

136.93	133.13	134.07	100	200	101	GOLD FLASH	5-1734099-8	200
[5.891]	[5.241]	[5.278]				0.381µm[15u"]	3-1734099-8	
							1-1734099-8	
111.53	107.73	108.67	80	160	81	GOLD FLASH	5-1734099-6	160
[4.391]	[4.241]	[4.278]				0.381µm[15u"]	3-1734099-6	
							1-1734099-6	
98.83	95.03	95.97	70	140	71	GOLD FLASH	5-1734099-4	140
[3.891]	[3.741]	[3.778]				0.381µm[15u"]	3-1734099-4	
							1-1734099-4	
86.13	82.33	83.27	20	120	61	GOLD FLASH	5-1734099-2	120
[3.391]	[3.241]	[3.278]				0.381µm[15u"]	3-1734099-2	
							1-1734099-2	
73.43	69.63	70.57	50	100	51	GOLD FLASH	5-1734099-0	100
[2.891]	[2.741]	[2.778]				0.381µm[15u"]	3-1734099-0	
							1-1734099-0	
60.73	56.93	57.87	40	80	41	GOLD FLASH	4-1734099-8	80
[2.391]	[2.241]	[2.278]				0.381µm[15u"]	2-1734099-8	
							1734099-8	
53.11	49.31	50.25	34	68	35	GOLD FLASH	4-1734099-7	68
[2.091]	[1.941]	[1.978]				0.381µm[15u"]	2-1734099-7	
							1734099-7	
48.03	44.23	45.17	30	60	31	GOLD FLASH	4-1734099-6	60
[1.891]	[1.741]	[1.778]				0.381µm[15u"]	2-1734099-6	
							1734099-6	
41.68	37.88	38.82	25	50	26	GOLD FLASH	4-1734099-5	50
[1.641]	[1.491]	[1.528]				0.381µm[15u"]	2-1734099-5	
							1734099-5	
35.33	31.53	32.47	20	40	21	GOLD FLASH	4-1734099-4	40
[1.391]	[1.241]	[1.278]				0.381µm[15u"]	2-1734099-4	
							1734099-4	
C	B	A	Q	J	H	GOLD PLATED	PART NUMBER	POS.

THIS DRAWING IS A CONTROLLED DOCUMENT.

DIMENSIONS:	TOLERANCES UNLESS OTHERWISE SPECIFIED:
MM	0 PLC ± -
	1 PLC ± 0.25
	2 PLC ± 0.2
	3 PLC ± -
	4 PLC ± -
	ANGLES ± -
MATERIAL	FINISH
SEE NOTE	SEE NOTE

TE Connectivity

PLUG ASSEMBLY, R/A,
BTB, CHAMP .050, SERIES I

APPROVED: F. YANG, 31MAR2009
 S. CHIEN, 31MAR2009
 W. KODAMA, 31MAR2009

PRODUCT SPEC: 108-57876
 QUALIFICATION TEST REPORT: -

WEIGHT: -
 CUSTOMER DRAWING

SIZE: A3
 CAGE CODE: 00779
 DRAWING NO: 1734099

SCALE: -
 SHEET: 1 of 4
 REV: E

4

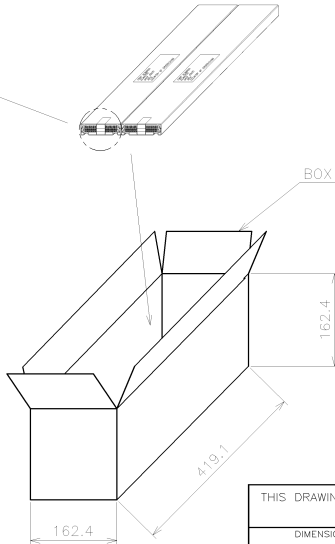
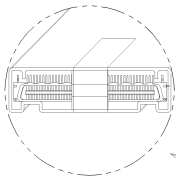
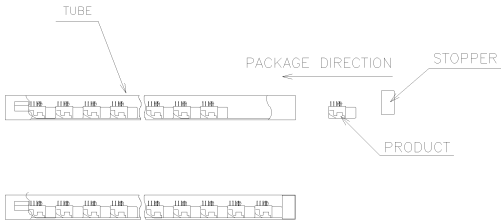
3

2

1

THIS DRAWING IS UNPUBLISHED. RELEASED FOR PUBLICATION AUG. 2006.
 © COPYRIGHT - BY TYCO ELECTRONICS CORPORATION. ALL RIGHTS RESERVED.

LOC	DIST	REVISIONS				
P	LTR	DESCRIPTION	DATE	DWN	APVD	
		SEE SHEET 1.				



POS.	Q'TY/ TUBE	TUBE/ BOX	Q'TY/ BOX	N/W (KG)	G/W (KG)	PART NUMBER
100	21	16	336	2.60	3.44	5-1734099-0
						3-1734099-0
						1-1734099-0
80	21	16	336	2.15	3.00	4-1734099-8
						2-1734099-8
						1734099-8

THIS DRAWING IS A CONTROLLED DOCUMENT.

DIMENSIONS: MM	TOLERANCES UNLESS OTHERWISE SPECIFIED:	DWN	CHK	 TE Connectivity PLUG ASSEMBLY, R/A, BTB, CHAMP .050, SERIES I
	0 PLC ± -	APVD	NAME	
	1 PLC ± -	PRODUCT SPEC	SIZE	
	2 PLC ± -	APPLICATION SPEC	CAGE CODE	
MATERIAL	FINISH	WEIGHT	DRAWING NO	RESTRICTED
			A3 00779	©-1734099
CUSTOMER DRAWING			SCALE	SHEET 3 of 4
			REV	E

4

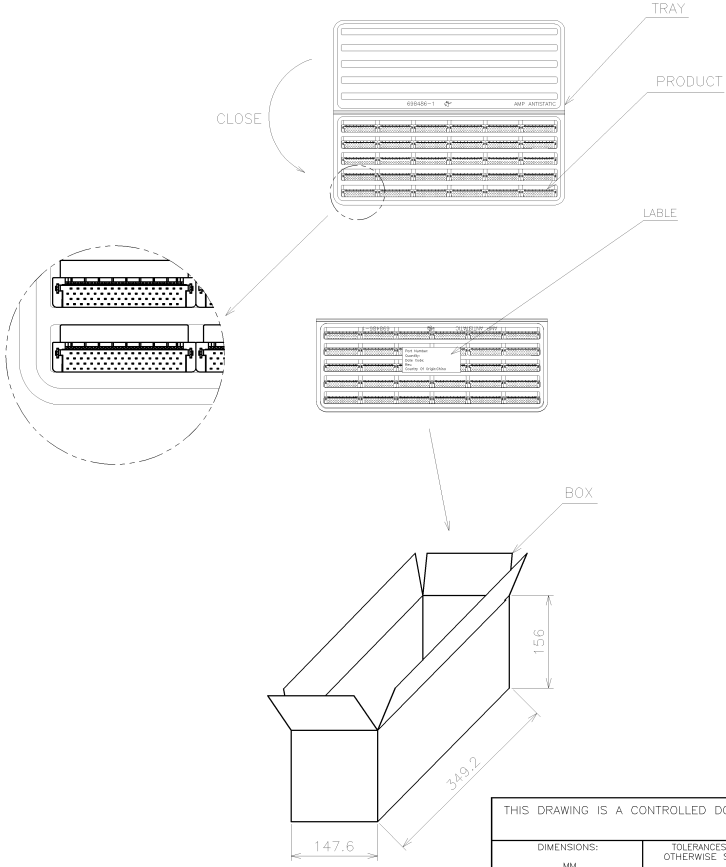
3

2

1

THIS DRAWING IS UNPUBLISHED. RELEASED FOR PUBLICATION AUG. 2006.
 COPYRIGHT - BY TYCO ELECTRONICS CORPORATION. ALL RIGHTS RESERVED.

LOC	DIST	REVISIONS				
P	LTR	DESCRIPTION	DATE	DWN	APVD	
SEE SHEET 1.						



200	10	10	100	1.40	2.35	5-1734099-8 3-1734099-8 1-1734099-8
160	10	10	100	1.18	2.13	5-1734099-6 3-1734099-6 1-1734099-6
140	15	10	150	1.59	2.46	5-1734099-4 3-1734099-4 1-1734099-4
120	15	10	150	1.20	2.15	5-1734099-2 3-1734099-2 1-1734099-2
68	30	10	300	1.69	2.64	4-1734099-7 2-1734099-7 1734099-7
60	30	10	300	1.53	2.48	4-1734099-6 2-1734099-6 1734099-6
50	35	10	350	1.58	2.56	4-1734099-5 2-1734099-5 1734099-5
40	45	10	450	1.71	2.66	4-1734099-4 2-1734099-4 1734099-4
POS.	Q'TY/ TRAY	TRAY/ BOX	Q'TY/ BOX	N/W (KG)	G/W (KG)	PART NUMBER

THIS DRAWING IS A CONTROLLED DOCUMENT.		DWN
DIMENSIONS: MM		CHK
TOLERANCES UNLESS OTHERWISE SPECIFIED:		APVD
0 PLC	±	PRODUCT SPEC
1 PLC	±	APPLICATION SPEC
2 PLC	±	WEIGHT
3 PLC	±	
4 PLC	±	
ANGLES	±	
MATERIAL	FINISH	

STE TE Connectivity

NAME

PLUG ASSEMBLY, R/A,
BTB, CHAMP .050, SERIES I

RESTRICTED

SIZE CAGE CODE DRAWING NO
A3 00779 C-1734099

CUSTOMER DRAWING

SCALE SHEET 4 OF 4 REV E