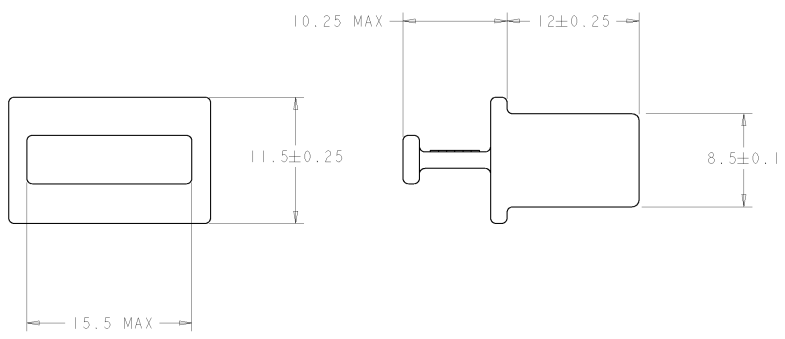
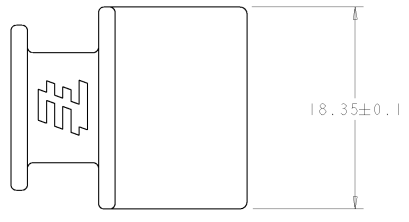
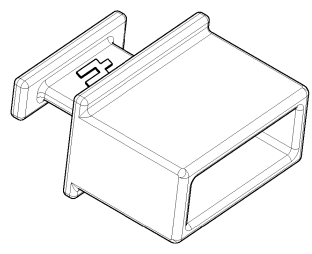


THIS DRAWING IS UNPUBLISHED. RELEASED FOR PUBLICATION 2007
 (C) COPYRIGHT BY ALL RIGHTS RESERVED.

REVOLUTION		REVISIONS			
LOC	QTY	TR	DATE	BY	APPD
GP	00				
		A1	28APR11	RK	HMR
		REVIS PER ECO-11-005027			



△ MATERIAL: ZINC ALLOY.
 △ FINISH: 1.27µm MIN NICKEL
 OVER 5.08µm MIN COPPER.

1888810-2
 PART NUMBER

DIMENSIONS: mm 0.25mm (0.010") TYPICAL UNLESS SPECIFIED		DWG: C_VALENTI CHK: E_BRIGHT APP: E_BRIGHT DATE: 24 JAN 2007	TE TE Connectivity EMI/DUST COVER, XFP AND QSFP		SIZE: - CASE CODE: - DRAWING NO: A200779-1888810	RESTRICTED TO: -
0 PLC 0.5 1 PLC 0.13 2 PLC 0.013 3 PLC 0.0081 4 ANGLES 0.5	PRODUCT SPEC: - APPLICATION SPEC: - WEIGHT: -	DATE: 24 JAN 2007	SCALE: 4:1		SHEET: 1 OF 1	REV: A1
MATERIAL: △ ZINC ALLOY		FINISH: △ 1.27µm MIN NICKEL OVER 5.08µm MIN COPPER		CUSTOMER DRAWING		