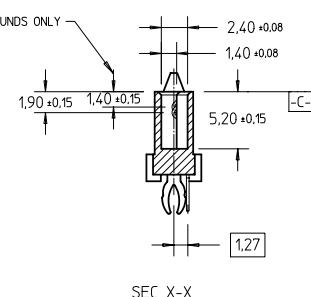
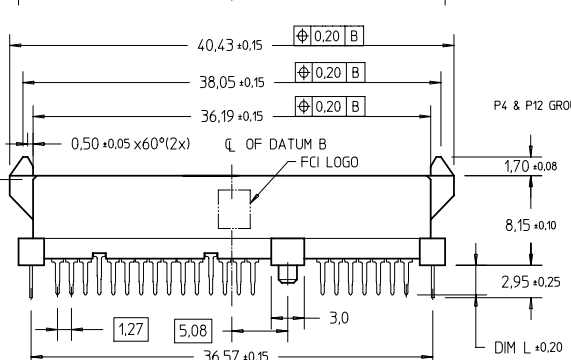
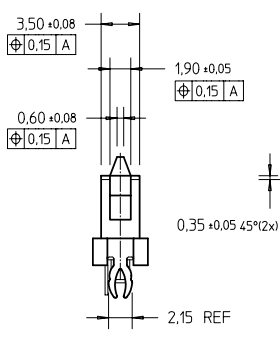
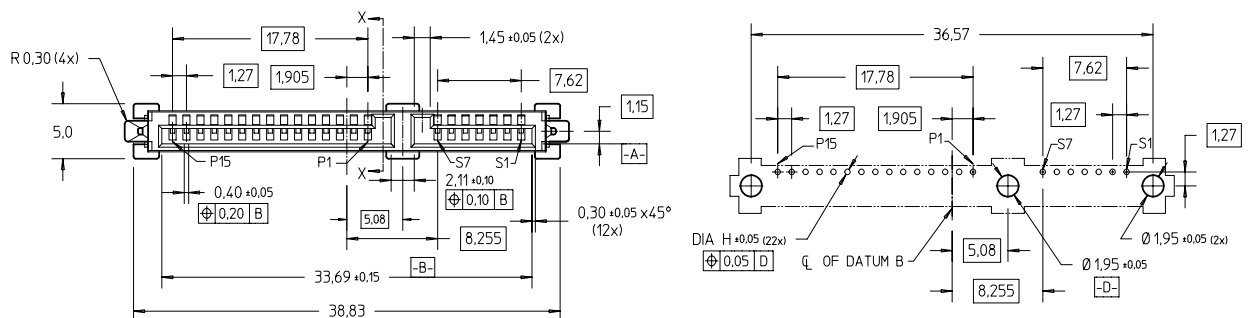


FCI CONFIDENTIAL  
 FCI  
 FCIconnect.com  
 This document is the property of and embodies CONFIDENTIAL and PROPRIETARY information of FCI. No part of the information shown on this drawing may be disclosed, copied, or otherwise used without the written consent of FCI.  
 Copyright FCI

PRODUCT NO	DIM L	RECOMMENDED P.C. BOARD THICKNESS	DIA "H"
10017660-001LF	2.70	1,57mm (0,062") / 2,36mm (0,093")	0,50
10017660-011LF	3,70	2,36mm (0,093")	0,50



- NOTES:**
- MATERIAL:**
    - HOUSING : HIGH TEMP. THERMOPLASTIC, UL 94V-0  
COLOR : BLACK
    - TERMINAL : COPPER ALLOY
    - HOLD DOWN : COPPER ALLOY
  - FINISH :**
    - TERMINAL : 30u" Au PLATING (CONTACT POINT) OVER 50u" MIN NICKEL
    - SOLDER TAIL : 100u" MIN TIN OVER 50u" MIN NICKEL
    - HOLD DOWN : 100u" MIN TIN OVER 50u" MIN NICKEL
  - TRUE POSITION NOTES APPLY AT TERMINAL TIP
- 4 PER S-ATA SPEC REV 10a

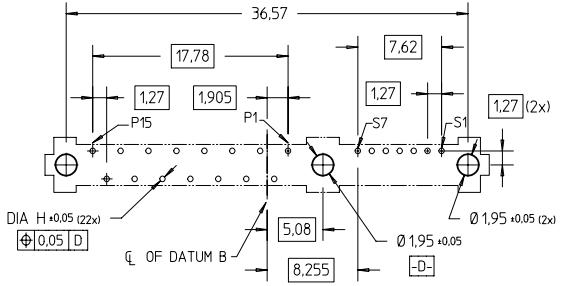
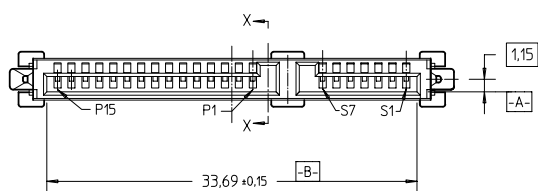
mat'l. code		surface	tolerance	projection	product family
		ISO 1302	ISO 406 ISO 1101		S-ATA
itr	ec'n no	dr	date	tolerances unless otherwise specified	
A	S04-0131	GLL	2004-10-05	angles	mm
B	S05-0035	GLL	2005-02-07	linear	
C	S04-0312	GLL	2006-09-19	± 2°	scale 2:1
D	S09-0179	GLL	2009-05-28	dr	QL L00
				enrg	QL L00
				chr	QL L00
				appd	JOEY NG
sheet	revision	D	0		
index	sheet	1	2		

FCI CONFIDENTIAL

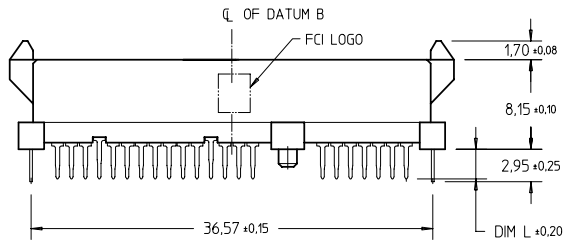
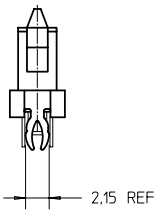


This document is the property of and embodies CONFIDENTIAL and PROPRIETARY information of FCI. No part of the information herein may be reproduced, stored in a retrieval system, or transmitted in any form or by any means, electronic, mechanical, photocopying, recording, or otherwise, without the written consent of FCI. Copyright © FCI

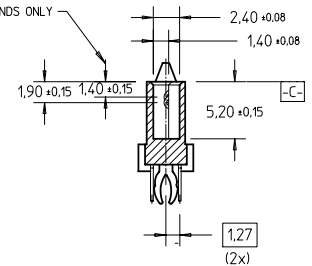
PRODUCT NO	DIM L	RECOMMENDED P.C. BOARD THICKNESS	DIA "H"
10017660-002LF	2.70	1,57mm (0,062") / 2,36mm (0,093")	0,50
10017660-012LF	3.70	2,36mm (0,093")	0,50



RECOMMENDED P.C.B. LAYOUT



NOTE: ALL OTHER DIMENSIONS REFER TO SHEET 1.



SEC X-X

- NOTES:
- 5 THE STD PACKAGING IS IN TRAY
  - 6 THE HOUSING WILL WITHSTAND EXPOSURE TO 260°C PEAK TEMPERATURE FOR 10 SECONDS IN A WAVE SOLDER APPLICATION WITH A 1,57MM MINIMUM THICK CIRCUIT BOARD.
  - 7 THIS PRODUCT MEETS EUROPEAN UNION DIRECTIVES AND OTHER COUNTRY REGULATIONS AS DESCRIBED IN GS-22-008
  - 8 PART NUMBERS ENDING IN "LF" MEANS FOR NOTE 7 LEAD FREE IDENTIFICATION. P/N XXXXXXXX-XXXLF IS EQUIVALENT TO PREVIOUS P/N XXXXXXXX-XXX
  - 9 A  $\Delta$  SYMBOL WILL BE NEXT TO ANY DIMENSION, VIEW, OR NOTE WHICH HAS BEEN MODIFIED WITH THE CURRENT DRAWING REVISION.

mat'l. code		surface	tolerance	projection	product family
ISO 1302		ISO 406	ISO 1101		S-ATA
tr	ecn no	dr	date	title	
tolerances unless otherwise specified				S-ATA COMB RECEP.	
D				VERTICAL TH TYPE ASSY	
			angles	linear	mm
			$\pm 2^\circ$	$\pm 0.20$	scale 2:1
			dr	QL L00	2004-10-05
			enrg	QL L00	2004-10-05
			chr	QL L00	2009-05-28
			appd	JOEY NG	2009-05-28
sheet	revision			dwg no	sheet 2 of 2 size
index	sheet	1		10017660	A4
				type	CUSTOMER Drawing