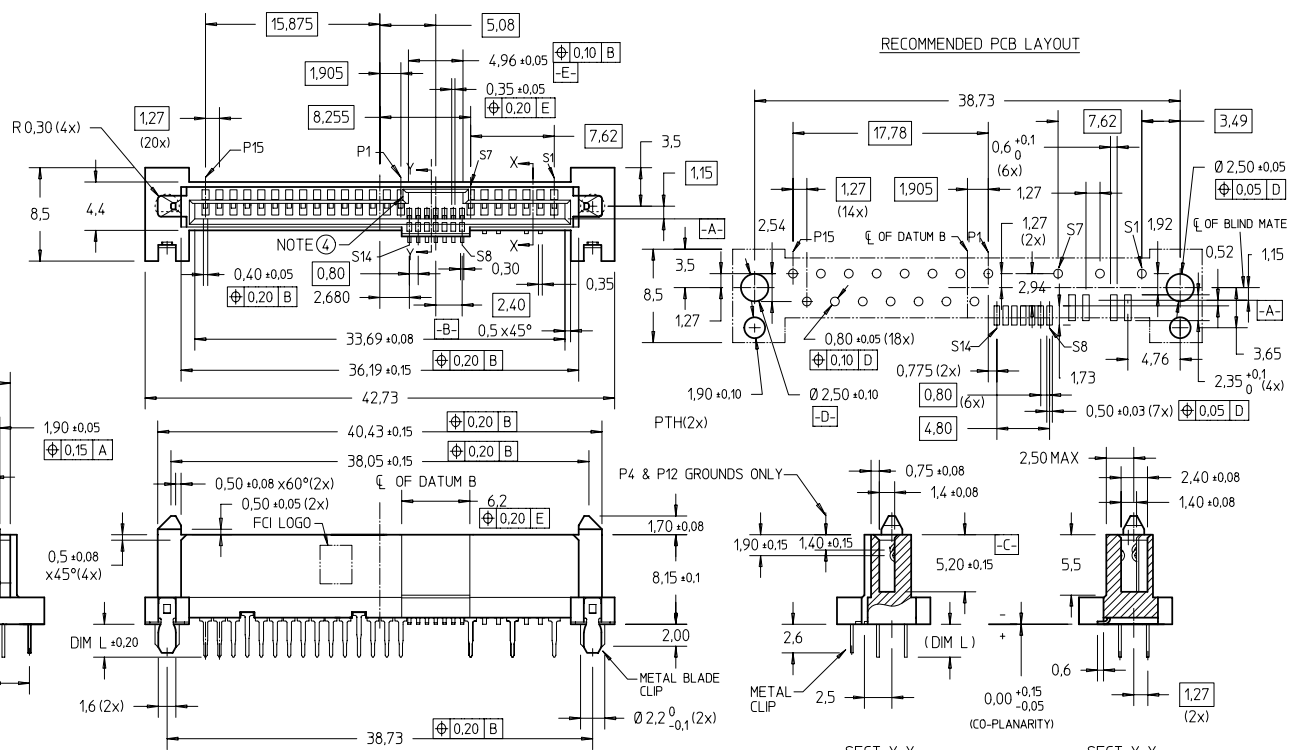


FCI CONFIDENTIAL
 This document is the property of and embodies CONFIDENTIAL and PROPRIETARY information of FCI. No part of the information shown here may be disclosed, copied, or otherwise used without the written consent of FCI.
 Copyright FCI

PRODUCT NO
 SEE TABLE



- NOTES:**
- 1 MATERIAL:
 - 1) HOUSING : HIGH TEMP TERMOPLASTIC, UL 94V-0
 - COLOR : BLACK
 - 2) TERMINAL : COPPER ALLOY
 - 3) HOLD DOWN : COPPER ALLOY
 - 2 FINISH :
 - 1) TERMINAL : 30u" Au PLATING (CONTACT POINT) OVER 50u" NICKEL
 - 2) SOLDER TAIL : 50u" min Sn OVER 50u" NICKEL
 - 3) HOLD DOWN : 50u" min Sn OVER 50u" NICKEL
- 4) PER SFF REV 13

itr	ecn no	dr	date	surface	tolerance	projection	product family
A	S05-0065	QLL	2005-03-01	ISO 1302	ISO 406 ISO 1101	mm	SAS
B	S05-0086	QLL	2005-03-17	angles	linear	mm	title
C	S05-0155	QLL	2005-05-30	± 2°	± 0.20	scale 2 : 1	SAS RECEPTACLE WIDE BASE HYBRID TYPE ASSY
D	S04-0263	QLL	2006-08-03	dr	QL L00	2005-02-23	dwg no
E	S07-0051	QLL	2007-02-14	engr	QL L00	2005-02-23	sheet 1 of 2 size
F	S09-0051	QLL	2009-02-19	chr	QL L00	2010-01-06	A4
G	S10-0001	QLL	2010-01-06	appd	JOEY NS	2010-01-06	10036876
sheet	revision	G	G				type
index	sheet	1	2				CUSTOMER Drawing

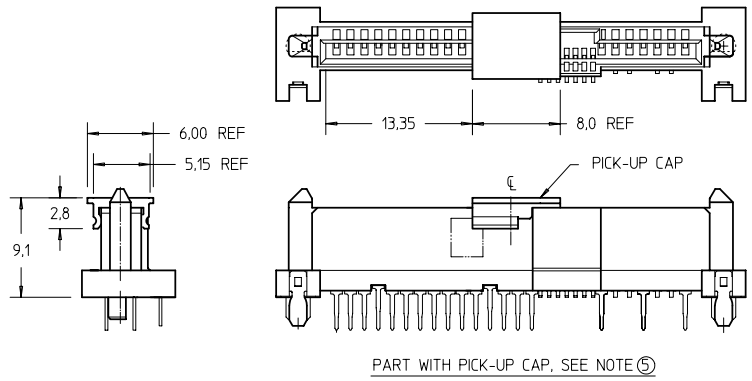
PDM: Rev:G STATUS:Released 10036876CRevG Printed: Jan 08, 2010

FCI CONFIDENTIAL

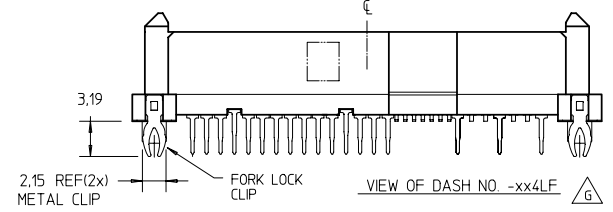
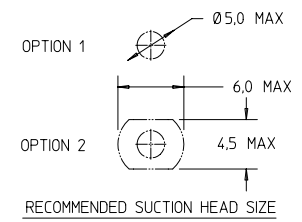
This document is the property of and embodies CONFIDENTIAL and PROPRIETARY information of FCI. No part of the information shown on this drawing may be disclosed, copied, or otherwise used without the written consent of FCI. Copyright FCI.

PRODUCT NO	DIM L (SOLDER TAIL)	PICK-UP CAP	RECOMMENDED P.C. BOARD THICKNESS	TYPE OF CLIP	PACKAGING
10036876-003LF	2.70	NO	1,57mm (0,062") / 2,36mm (0,093")	METAL BLADE	TRAY
10036876-003CLF		YES			TAPE & REEL
10036876-003C-TRLF		YES			
10036876-013LF	3.70	NO	2,36mm (0,093")	METAL BLADE	TRAY
10036876-013CLF		YES			TAPE & REEL
10036876-013C-TRLF		YES			
10036876-004LF	2.70	NO	2,36mm (0,093")	FORK LOCK	TRAY
10036876-014LF	3.70	NO	2,36mm (0,093")	FORK LOCK	TRAY

- NOTES:
- ⑤ PART WITH PICK-UP CAP, P/N XXXXXXXX-XXXX LF
 - ⑥ THE STD PACKAGING IS IN TRAY
 - 7 FOR TAPE & REEL PACKAGING, SUFFIX "-TR" ADDED.
P/N XXXXXXXX-XXXX -TR LF
 - 8 THE HOUSING WILL WITHSTAND EXPOSURE TO 260°C PEAK TEMPERATURE FOR 10 SECONDS IN A CONVECTION, INFRA-RED OR VAPOR PHASE REFLOW OVEN.
 - ⑨ THIS PRODUCT MEETS EUROPEAN UNION DIRECTIVES AND OTHER COUNTRY REGULATIONS AS DESCRIBED IN GS-22-008.
 - ⑩ PART NUMBERS ENDING IN "LF" MEANS FOR NOTE 8 LEAD FREE IDENTIFICATION
 - ⑪ ~~XXXXXXXX-XXXX LF IS EQUIVALENT TO PREVIOUS P/N XXXXXXXX-XXXX~~
 - ⑪ ~~XXXXXXXX-XXXX LF IS EQUIVALENT TO PREVIOUS P/N XXXXXXXX-XXXX~~
 - 11 A Δ SYMBOL WILL BE NEXT TO ANY DIMENSION, VIEW, OR NOTE WHICH HAS BEEN MODIFIED WITH THE CURRENT DRAWING REVISION.



PART WITH PICK-UP CAP, SEE NOTE ⑤



mat'l. code	surface ISO 1302	tolerance ISO 406 ISO 1101	projection	product family
ltr	ecn no	dr	date	SAS
G				title
				SAS RECEPTACLE WIDE BASE HYBRID TYPE ASSY
				dwg no
				10036876
				sheet 2 of 2 size
				A4
				type
				CUSTOMER Drawing
sheet index	revision	sheet	1	