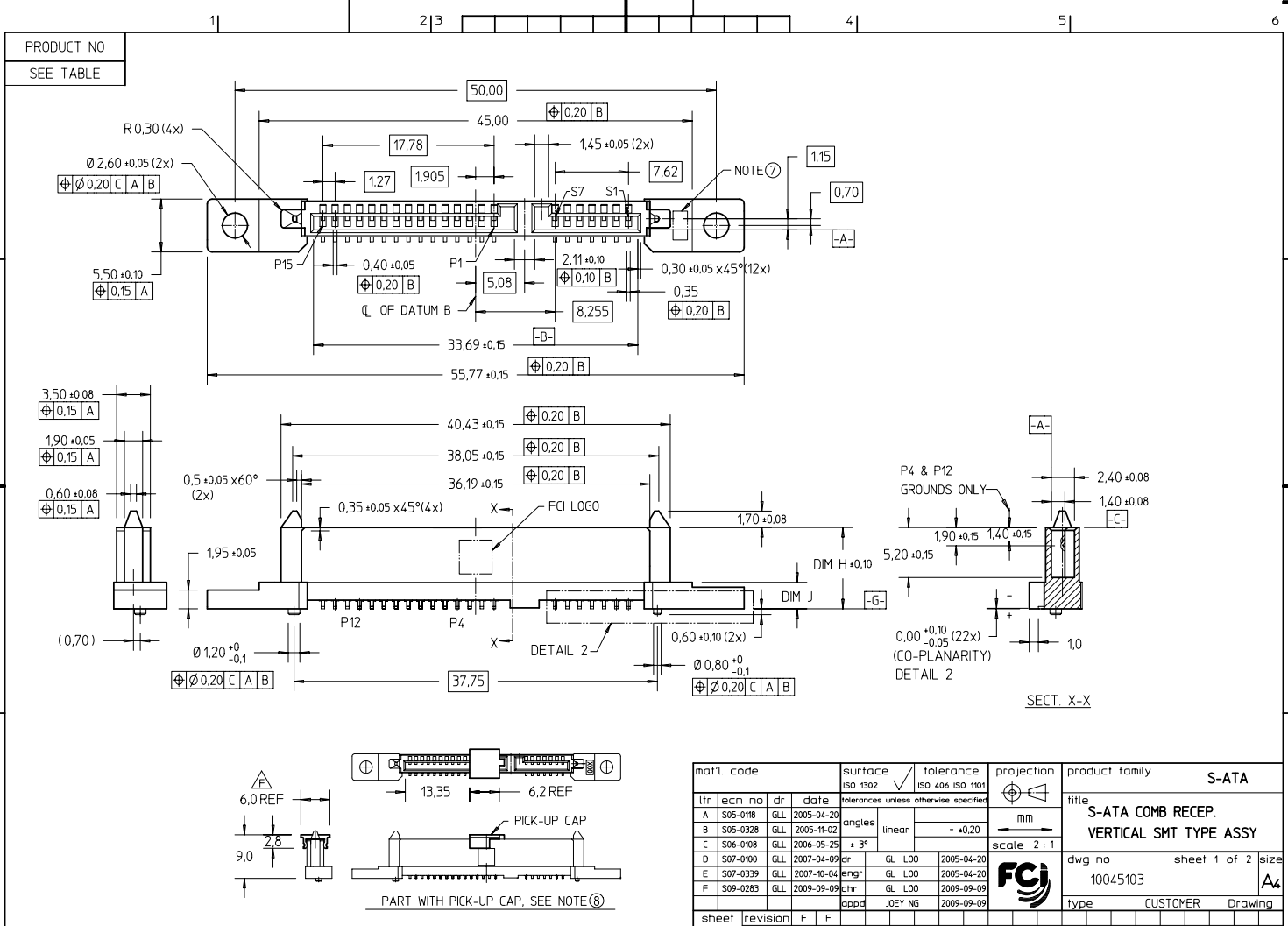


FCI CONFIDENTIAL  
 This document is the property of and embodies CONFIDENTIAL and PROPRIETARY information of FCI. No part of the information shown here may be reproduced, stored in a retrieval system, or transmitted in any form or by any means, electronic, mechanical, photocopying, recording, or otherwise, without the written consent of FCI.  
 Copyright © FCI

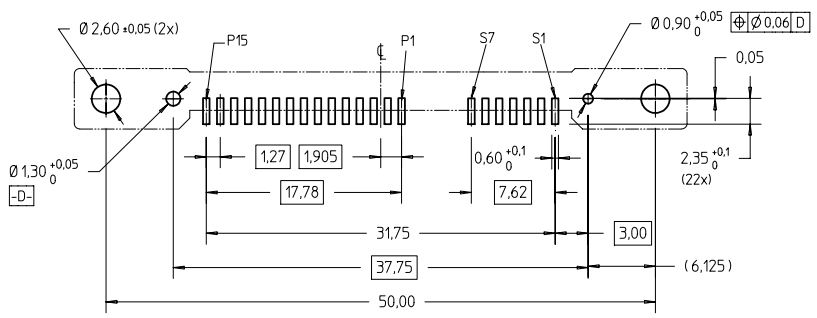


mat'l. code		surface	tolerance	projection	product family
		ISO 1302	ISO 406 ISO 1101		S-ATA
tolerances unless otherwise specified		mm			title
itr	ec'n no	dr	date	angles	S-ATA COMB RECP.
A	S05-0118	QLL	2005-04-20	linear	VERTICAL SMT TYPE ASSY
B	S05-0328	QLL	2005-11-02	± 3°	scale 2:1
C	S04-0108	QLL	2006-05-25		dwg no
D	S07-0100	QLL	2007-04-09	dr	10045103
E	S07-0339	QLL	2007-10-04	engr	sheet 1 of 2 size
F	S09-0283	QLL	2009-09-09	chr	A4
app'd		JOEY NG		2009-09-09	type
sheet		revision	F	F	CUSTOMER
index		sheet	1	2	Drawing

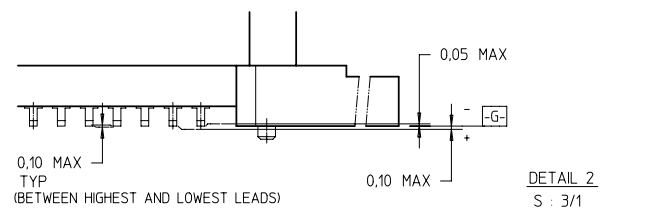
PDM: Rev:F STATUS Released 10/5/09 Printed: Oct 08, 2009

FCI CONFIDENTIAL

PRODUCT NO	DIM H	DIM J	PICK-UP CAP	PACKAGING
10045103-001LF	8,15	2,45	NO	TRAY
10045103-001CLF			YES	TRAY
10045103-001C-TRLF			YES	TAPE & REEL
10045103-002LF	8,45	2,75	NO	TRAY
10045103-002CLF			YES	TRAY
10045103-002C-TRLF			YES	TAPE & REEL



RECOMMENDED PCB LAYOUT



- NOTES:
- THIS PRODUCT MEETS THE SATA SPEC REV. 10a
  - MATERIAL:
    - HOUSING : HIGH TEMP TERMOPLASTIC, UL 94V-0  
COLOR : BLACK
    - TERMINAL : COPPER ALLOY
    - HOLD DOWN : COPPER ALLOY
  - FINISH :
    - TERMINAL : 30u" Au PLATING (CONTACT POINT) OVER 50u" NICKEL
    - SOLDER TAIL : 100u" min Sn OVER 50u" NICKEL
    - HOLD DOWN : 100u" min Sn OVER 50u" NICKEL
  - THE HOUSING WILL WITHSTAND EXPOSURE TO 260°C PEAK TEMPERATURE FOR 10 SECONDS IN A CONVECTION, INFRA-RED OR VAPOR PHASE REFLOW OVEN.
  - THIS PRODUCT MEETS EUROPEAN UNION DIRECTIVES AND OTHER COUNTRY REGULATIONS AS DESCRIBED IN GS-22-008.
  - THE STD PACKAGING IS IN TRAY UNLESS OTHERWISE SPECIFIED.
  - IDENTIFICATION NUMBER FOR CONNECTOR HOUSING
  - PART WITH PICKUP CAP, P/N XXXXXXXX-XXXC LF
  - FOR TAPE & REEL PACKAGING, SUFFIX "-TR" ADDED.  
P/N XXXXXXXX-XXXC-TR LF
  - A  $\Delta$  SYMBOL WILL BE NEXT TO ANY DIMENSION, VIEW, OR NOTE WHICH HAS BEEN MODIFIED WITH THE CURRENT DRAWING REVISION.

mat'l. code		surface	tolerance	projection	product family
ISO 1302		ISO 406	ISO 1101		S-ATA
tr ecn no dr date		tolerances unless otherwise specified			title
F		angles	linear	mm	S-ATA COMB RECP. VERTICAL SMT TYPE ASSY
		± 3°	= +0,20	scale 2 : 1	dwg no 10045103
		dr QL L00 2005-04-20			sheet 2 of 2 size A4
		enrg QL L00 2005-04-20			type CUSTOMER Drawing
		chr QL L00 2009-09-09			
		appd JOEY NG 2009-09-09			
sheet index	revision sheet	1			