

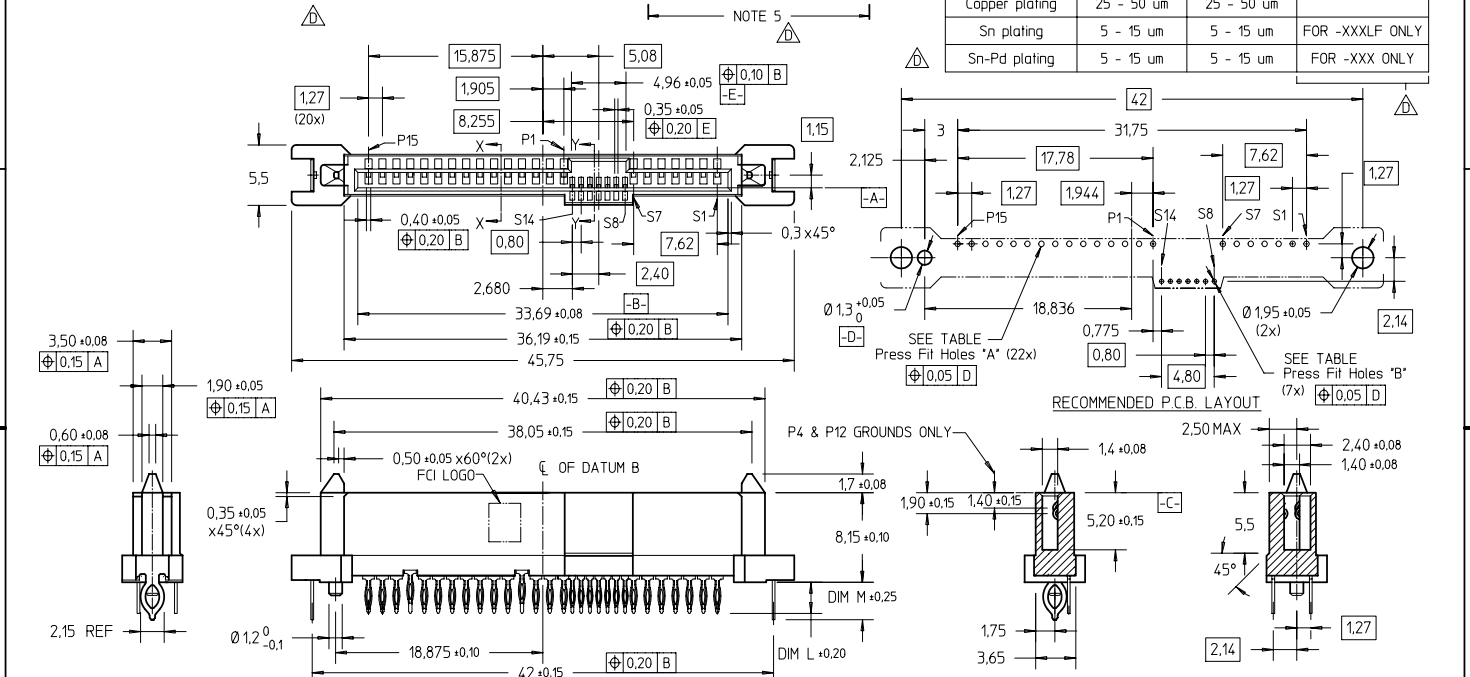
FCI CONFIDENTIAL



This document is the property of and embodies CONFIDENTIAL and PROPRIETARY information of FCI. No part of the information shown herein may be reproduced, stored in a retrieval system, or transmitted in any form or by any means, electronic, mechanical, photocopying, recording, or by any information storage and retrieval system, without the written consent of FCI. Copyright FCI.

PRODUCT NO	DIM L	DIM M	PLATING	RECOMMENDED P.C. BOARD THICKNESS	PRODUCT NO	PLATING
10031077-001LF	2.70	3.41	NOTE 2	1.57mm (0.062") / 2.36mm (0.093")	10031077-001	NOTE 5
10031077-011LF	3.70	3.41		2.36mm (0.093")	10031077-011	

Hole Diameter after plating	A	B	REMARK
Drilled hole	0.58 - 0.62 mm	0.50 - 0.51 mm	FOR -XXX & -XXXLF
Copper plating	25 - 50 um	25 - 50 um	FOR -XXXLF ONLY
Sn plating	5 - 15 um	5 - 15 um	FOR -XXX ONLY
Sn-Pd plating	5 - 15 um	5 - 15 um	FOR -XXX ONLY



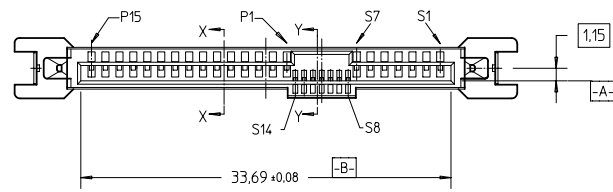
- NOTES:**
- MATERIAL:**
 - HOUSING : HIGH TEMP. THERMOPLASTIC, UL 94V-0 COLOR : BLACK
 - TERMINAL : COPPER ALLOY
 - HOLD DOWN : COPPER ALLOY
 - FINISH :** FOR XXXXXXXX-XXXLF
 - TERMINAL : 30u" Au PLATING (CONTACT POINT) OVER 50u" MIN NICKEL
 - SOLDER TAIL : 20u" MIN -60u" MAX TIN OVER 50u" MIN NICKEL
 - HOLD DOWN : 50u" MIN TIN OVER 50u" MIN NICKEL
 - TRUE POSITION NOTES APPLY AT (L= 2.70MM) TERMINAL TIP**
 - PER SFF REV 11 EXCEPT 0.8mm PITCH BUMP AREA.**
 - FINISH :** FOR XXXXXXXX-XXX
 - TERMINAL : 30u" Au PLATING (CONTACT POINT) OVER 50u" MIN NICKEL
 - SOLDER TAIL : 20u" MIN -60u" MAX TIN-LEAD OVER 50u" MIN NICKEL
 - HOLD DOWN : 50u" MIN TIN-LEAD OVER 50u" MIN NICKEL

mat'l. code	surface	tolerance	projection	product family
	ISO 1302	ISO 406 ISO 1101		SAS
tr	ecn no	dr	date	title
A	S04-0130	GLL	2004-09-23	SAS RECEPTACLE
B	S05-0026	GLL	2005-02-14	VERTICAL PF TYPE ASSY
C	S04-0281	GLL	2006-08-28	
D	S09-0215	GLL	2009-07-21	
sheet index	revision sheet	D	D	
		1	2	

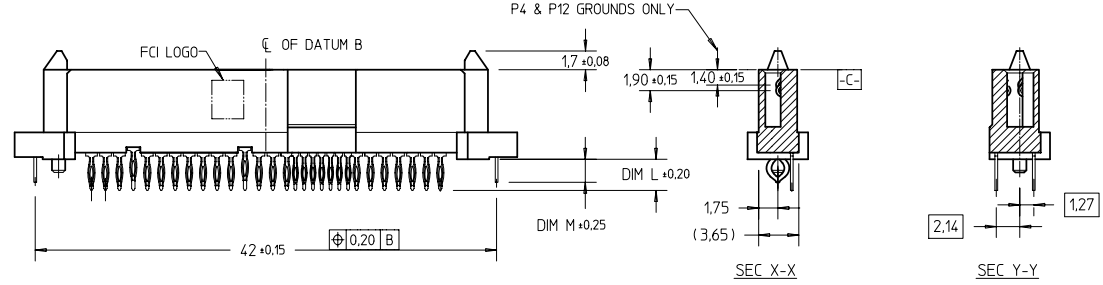
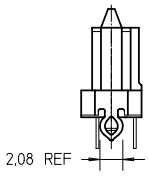
FCI CONFIDENTIAL

FCI
FCIconnect.com
This document is the property of and embodies CONFIDENTIAL and PROPRIETARY information of FCI. No part of the information shown here may be reproduced, stored in a retrieval system, or transmitted in any form or by any means, electronic, mechanical, photocopying, recording, or by any information storage and retrieval system, without the written consent of FCI.
Copyright © FCI

PRODUCT NO	DIM L	DIM M	PLATING	RECOMMENDED P.C. BOARD THICKNESS
10031077-003LF	2.70	2.10	NOTE 2	1.57mm (0.062") / 2.36mm (0.093")



- NOTES:
- 6 THE HOUSING WILL WITHSTAND EXPOSURE TO 260°C PEAK TEMPERATURE FOR 10 SECONDS IN A CONVECTION, INFRA-RED OR VAPOR PHASE REFLOW OVEN.
 - 7 THIS PRODUCT MEETS EUROPEAN UNION DIRECTIVES AND OTHER COUNTRY REGULATIONS AS DESCRIBED IN GS-22-008.
 - 8 PART NUMBERS ENDING IN "LF" MEANS FOR NOTE 7 LEAD FREE IDENTIFICATION. P/N XXXXXXXX-XXXLF IS EQUIVALENT TO PREVIOUS P/N XXXXXXXX-XXX.
 - 9 NOTE 7 AND 8 DO NOT APPLY TO TIN LEAD PLATING P/N XXXXXXXX-XXX IN TABLE.
 - 10 THE STD PACKAGING IS IN TRAY.
 - 11 A Δ SYMBOL WILL BE NEXT TO ANY DIMENSION, VIEW OR NOTE WHICH HAS BEEN MODIFIED WITH THE CURRENT DRAWING REVISION.



NOTES:
ALL OTHER DIMENSIONS, REFER TO SHEET 1.

mat'l. code		surface	tolerance	projection	product family
itr ecn no dr date		ISO 1302	ISO 406 ISO 1101	Φ	SAS
D		tolerances unless otherwise specified		mm	title
		angles	linear	mm	SAS RECEPTACLE
		$\pm 2^\circ$	± 0.20	scale 2:1	VERTICAL PF TYPE ASSY
		dr	GL L00	2004-09-23	dwg no
		engr	GL L00	2004-09-23	10031077
		chr	GL L00	2009-07-21	sheet 2 of 2 size
		appd	JOEY NS	2009-07-21	A4
sheet index		revision sheet	1		type CUSTOMER Drawing

PDM: Rev:D STATUS: Released Printed: Jul 31, 2009