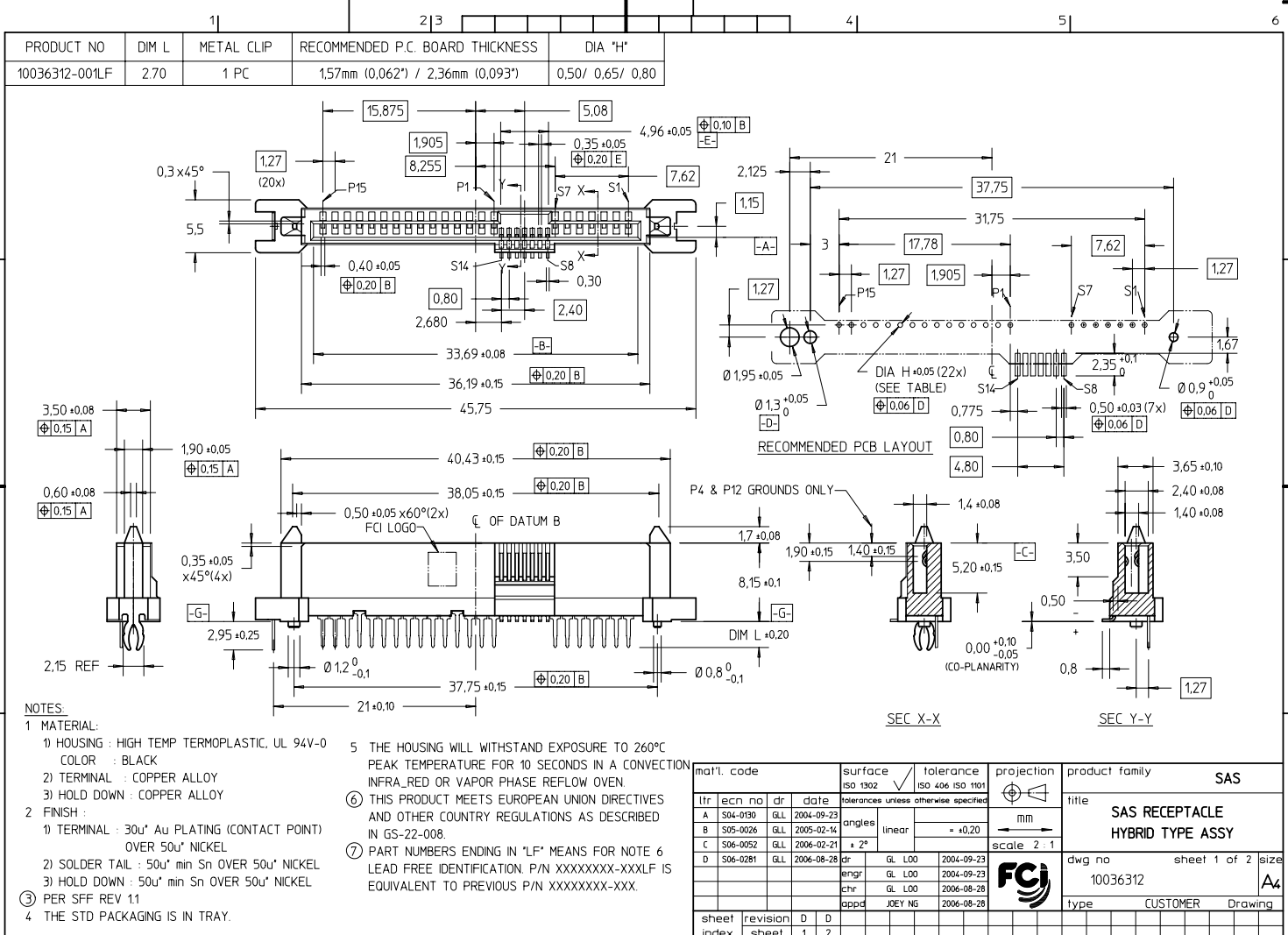


FCI CONFIDENTIAL
 This document is the property of and embodies CONFIDENTIAL and PROPRIETARY information of FCI. No part of the information shown here may be reproduced, stored in a retrieval system, or transmitted in any way or by any means, without the written consent of FCI.
 Copyright © FCI



- NOTES:**
- MATERIAL:**
 - HOUSING : HIGH TEMP TERMOPLASTIC, UL 94V-0
COLOR : BLACK
 - TERMINAL : COPPER ALLOY
 - HOLD DOWN : COPPER ALLOY
 - FINISH :**
 - TERMINAL : 30u" Au PLATING (CONTACT POINT)
OVER 50u" NICKEL
 - SOLDER TAIL : 50u" min Sn OVER 50u" NICKEL
 - HOLD DOWN : 50u" min Sn OVER 50u" NICKEL
 - PER SFF REV 11
 - THE STD PACKAGING IS IN TRAY.
 - THE HOUSING WILL WITHSTAND EXPOSURE TO 260°C PEAK TEMPERATURE FOR 10 SECONDS IN A CONVECTION INFRA-RED OR VAPOR PHASE REFLOW OVEN
 - THIS PRODUCT MEETS EUROPEAN UNION DIRECTIVES AND OTHER COUNTRY REGULATIONS AS DESCRIBED IN GS-22-008.
 - PART NUMBERS ENDING IN "LF" MEANS FOR NOTE 6 LEAD FREE IDENTIFICATION. P/N XXXXXXXX-XXXLF IS EQUIVALENT TO PREVIOUS P/N XXXXXXXX-XXX.

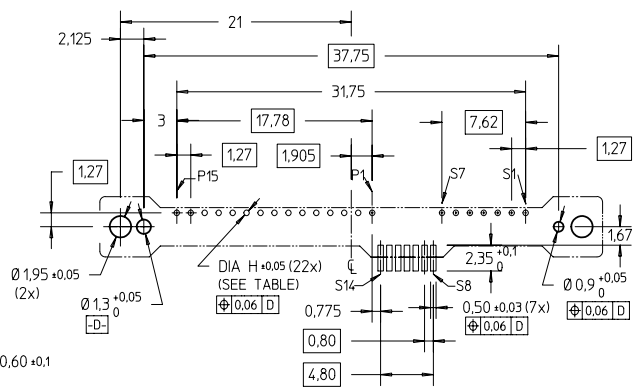
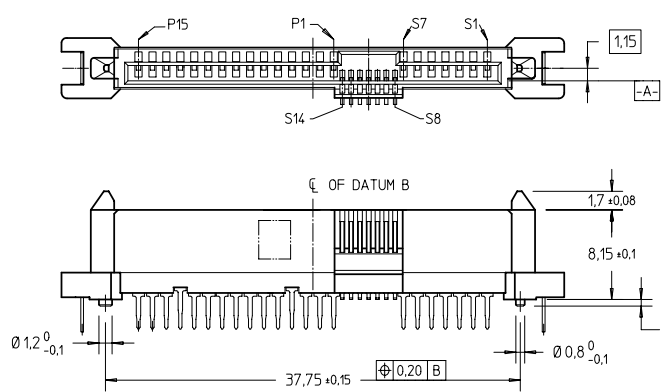
itr	ecm no	dr	date	surface	tolerance	projection	product family
A	S04-0130	GLL	2004-09-23	ISO 1302	ISO 406 ISO 1101		SAS
B	S05-0026	GLL	2005-02-14	tolerances unless otherwise specified			title
C	S06-0052	GLL	2006-02-21	angles	linear	mm	SAS RECEPTACLE HYBRID TYPE ASSY
D	S06-0281	GLL	2006-08-28	± 2°	± 0.20	scale 2:1	sheet 1 of 2 size
				engr	chr		10036312
				appd	JOEY NS		A4
sheet index	revision sheet	D	D				type CUSTOMER Drawing
		1	2				

PDM: Rev:D STATUS: Released Printed: Jul 10, 2009

FCI CONFIDENTIAL

FCI
FCIconnect.com
This document is the property of and embodies CONFIDENTIAL and PROPRIETARY information of FCI. No part of the information herein may be reproduced, stored in a retrieval system, or transmitted in any form or by any means, electronic, mechanical, photocopying, recording, or by any information storage and retrieval system, without the written consent of FCI.
Copyright © FCI

PRODUCT NO	DIM L	METAL CLIP	RECOMMENDED P.C. BOARD THICKNESS	DIA "H"
10036312-002LF	2.70	2 PCS	1,57mm (0,062") / 2,36mm (0,093")	0,50/ 0,65/ 0,80



RECOMMENDED PCB LAYOUT

NOTES:
ALL OTHER DIMENSIONS, REFER TO SHEET 1.

mat'l. code		surface	tolerance	projection	product family	
itr		ISO 1302	ISO 406 ISO 1101		SAS	
ecn no		tolerances unless otherwise specified			title	
dr		angles	linear	mm	SAS RECEPTACLE HYBRID TYPE ASSY	
date		± 2°	= +0,20	mm	sheet 2 of 2 size	
		dr	QL L00	2004-09-23	A4	
		engr	QL L00	2004-09-23	dwg no	
		chr	QL L00	2006-08-28	10036312	
		appd	JOEY NS	2006-08-28	type	
					CUSTOMER Drawing	
sheet index	revision sheet				1	

PDM: Rev:D STATUS: Released Printed: Jul 10, 2009